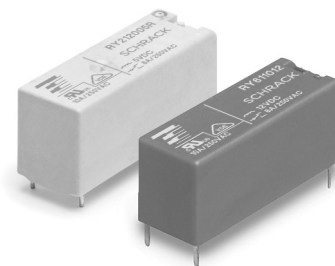


Miniature Power PCB RYII & RYII Reflow Solderable
RY900108, RY900109, RY900110, RY900111, RY900112, RY900133

- 1 pole 8A, 1 form C (CO) or 1 form A (NO) or 1 form B (NC) contact
- Low component height 12.3mm
- 5kV/8mm coil-contact
- Reinforced insulation (protection class II)
- Pinnings: 3.2mm and 5mm
- Reflow-solderable version
- Sockets with PCB-type terminals
- Especially suitable for resistive and inductive loads on form A (NO) and form B (NC) contacts
- Plastic materials according to IEC 60335-1 (domestic appliances)

Typical applications

heating control, interface technology, domestic appliances, timers,
temperature control



F0142-E



Approvals

VDE Cert. No. 40009639, UL E214025

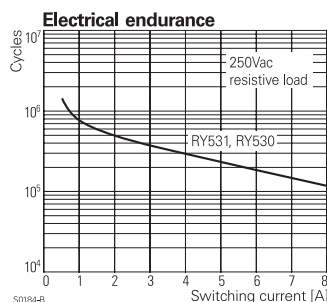
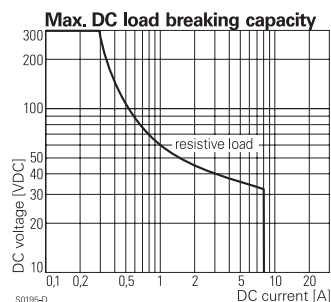
Technical data of approved types on request

Contact Data

Contact arrangement	1 form C (CO) or 1 form A (NO) or 1 form B (NC)
Contact set	single contact
Type of interruption	micro disconnection
Rated voltage	250VAC
Max. switching voltage	400VAC
Rated current	8A
Breaking capacity AC max.	2000VA
Contact material	AgNi0.15, AgSnO ₂ , AgCdO
Mechanical endurance	30x10 ⁶ cycles
Frequency of operation, with/without load	6/1200min ⁻¹

Contact ratings

Type	Load	Cycles
RY**1***	A (NO), 8A, 250VAC, resistive, 70°C	1x10 ⁵
RY**1***	B (NC), 8A, 250VAC, resistive, 70°C	5x10 ⁴
RY**(0, 1, 2)***	8A, 30VDC, UL 508	3x10 ⁴
RY**(0, 1, 2)***	0.28A, 250VDC, UL 508	3x10 ⁴
RY**(0, 1, 2)***	1/2 HP, 240VDC, UL 508	
RY**(0, 1, 2)***	1/4 HP, 120VDC, UL 508	
RY**(0)***	8A, 415VAC, resistive, UL 508	6x10 ³
RY**(0, 1, 2)***	Pilot duty - B300, UL 508	6000
RY*** **	C (CO), 8A, 250VAC, resistive, 70°C	5x10 ³
RY**1 ***	6(4)A, 250VAC, 85°C, EN60730	1x10 ⁵



Miniature Power PCB RYII & RYII Reflow Solderable
RY900108, RY900109, RY900110, RY900111, RY900112, RY900133 (Continued)

Insulation Data	CO contact	NO contact
Initial dielectric strength		
between open contacts	1000V _{rms}	
between contact and coil	5000V _{rms}	
Clearance/creepage		
between contact and coil	≥8/8mm	
Material group of insulation parts	IIIa	
Tracking index of relay base	PTI250	
reflow-solderable version	PTI175	
Insulation to IEC 60664-1		
Type of insulation		
coil-contact circuit		reinforced
open contact circuit		functional
Rated insulation voltage	250 V	250 V
Pollution degree	3	2
Rated voltage system	230 V	400 V
Overvoltage category	III	III

Other Data

Material compliance: EU RoHS/ELV, China RoHS, REACH, Halogen content refer to the Product Compliance Support Center at www.te.com/customer-support/rohssupportcenter

Flammability class according to UL94	V-0
GWFI to IEC 60335-1	> 850°C
GWT to IEC 60335-1	> 750°C
Ambient temperature max.	-40 to +70°C
	+85°C at 6A
Category of environmental protection IEC 61810	RTII - flux proof RTIII - wash tight**
Vibration resistance (functional), form A (NO)/form B (NC)	20/5g
Shock resistance (functional) form A (NO)/form B (NC)	20/5g
Shock resistance (destructive)	100g
Operate- / release time	typ. 7/3 ms
Bounce time	
form A (NO)/form B (NC)	typ. 2.5 / 4.5 ms
Mounting	PCB
Mounting position	any
Minimum mounting distance	≥0 mm
Resistance to soldering heat	
flux proof version	270°C/10s
wash tight version	260°C/5s
Weight	8g
Packaging/unit	20 / 500 pcs

**) not available as reflow-solderable version

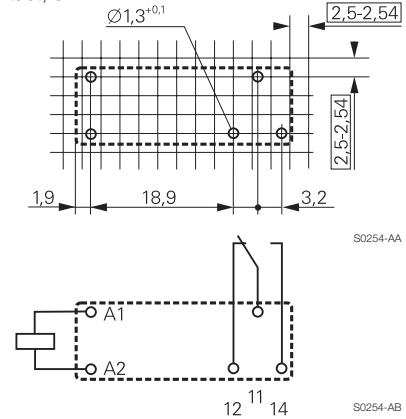
Accessories

For details see datasheet [Accessories Miniature PCB Relay RY](#)

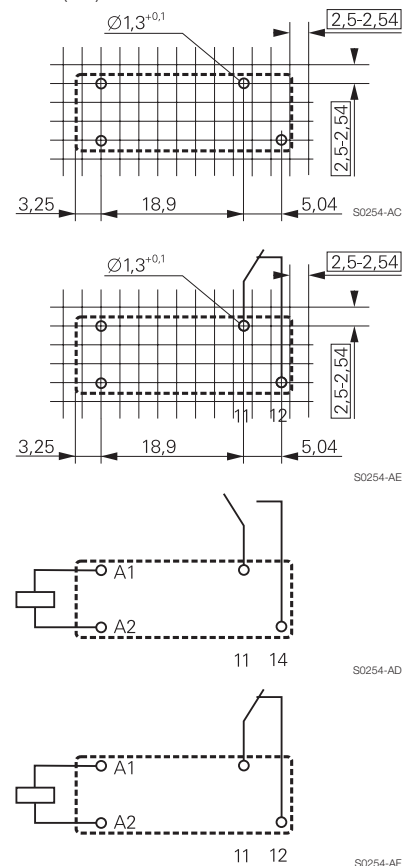
PCB layout / terminal assignment

Bottom view on solder pins

1 form C (CO) contact, 3.2mm



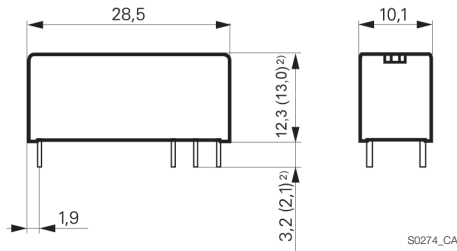
1 form A (NO), 1 form B (NC) contact 5mm



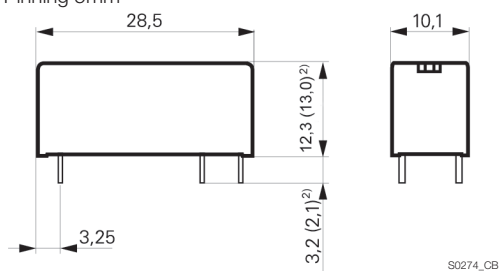
Miniature Power PCB RYII & RYII Reflow Solderable
RY900108, RY900109, RY900110, RY900111, RY900112, RY900133 (Continued)

Dimensions

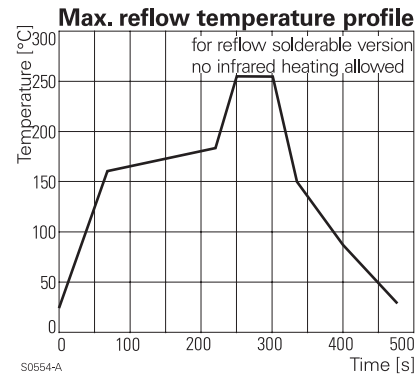
Pinning 3.2mm



Pinning 5mm



Soldering profile for reflow-solderable version



Product code structure

Typical product code

RY 6 1 1 012

Type

RY Miniature Power PCB RYII & RYII reflow solderable

Version

2 pinning 3.2mm, flux proof
5 pinning 5mm, flux proof
6 pinning 3.2mm, wash tight**)
A pinning 5mm, wash tight**)

Contact configuration

1 form C (CO Contact), pinning 3.2mm
3 form A (NO contact), pinning 5mm

Contact material

0 AgCdO
1 AgNi 0.15
2 AgNi 0.15 gold plated
3 AgSnO₂

Coil

Coil code: please refer to coil versions table

Version

Blank standard version
R reflow-solderable

**) not available as reflow-solderable version
Other types on request

Overview special PN Crouzet
Deviation to standard data sheet

Special PN for Crouzet	Part Number	Difference to standard version
RY900108 (RY211006)	9-1415398-1	Rk < 50mOhm at Testcondition 6V/10mA
RY900109 (RY211012)	1415399-1	Rk < 50mOhm at Testcondition 6V/10mA
RY900110 (RY211024)	1-1415399-1	Rk < 50mOhm at Testcondition 6V/10mA
RY900111 (RY611012)	7-1415500-1	Rk < 50mOhm at Testcondition 6V/10mA
RY900112 (RY611024)	8-1415500-1	Rk < 50mOhm at Testcondition 6V/10mA
RY900133 (RY611005)	1-1956164-2	Rk < 50mOhm at Testcondition 6V/10mA

Miniature Power PCB RYII & RYII Reflow Solderable

RY900108, RY900109, RY900110, RY900111, RY900112, RY900133 (Continued)

Product code	Version	Contacts	Contact material	Coil	Part Number
RY210005	pinning 3.2 mm flux proof	1 form C (CO) contact	AgCdO	5 VDC	3-1393224-1
RY210012				12 VDC	3-1393224-5
RY210024				24 VDC	3-1393224-8
RY210048				48 VDC	4-1393224-1
RY211005			AgNi 0.15	5 VDC	4-1393224-2
RY211012				12 VDC	4-1393224-6
RY211024				24 VDC	4-1393224-9
RY211048				48 VDC	5-1393224-1
RY212005			AgNi 0.15 gold plated	5 VDC	5-1393224-2
RY212012				12 VDC	5-1393224-5
RY212024				24 VDC	5-1393224-8
RY212048				48 VDC	5-1393224-9
RY213005	pinning 5 mm flux proof	1 form A (NO) contact	AgSnO ₂	5 VDC	6-1393224-0
RY213012				12 VDC	6-1393224-1
RY213024				24 VDC	6-1393224-2
RY213048				48 VDC	6-1393224-3
RY530005			AgCdO	5 VDC	6-1393224-6
RY530012				12 VDC	6-1393224-9
RY530024				24 VDC	7-1393224-2
RY530048				48 VDC	7-1393224-4
RY531005			AgNi 0.15	5 VDC	7-1393224-6
RY531012				12 VDC	7-1393224-9
RY531024				24 VDC	8-1393224-2
RY531048				48 VDC	8-1393224-3
RY532012	pinning 3.2 mm wash tight	1 form C (CO) contact	AgNi 0.15	12 VDC	8-1393224-4
RY532024				24 VDC	8-1393224-5
RY533012			AgSnO ₂	12 VDC	8-1393224-8
RY533024				24 VDC	8-1393224-9
RY533048				48 VDC	9-1393224-0
RY610005			AgCdO	5 VDC	1393225-7
RY610012				12 VDC	1-1393225-0
RY610024				24 VDC	1-1393225-4
RY610048				48 VDC	1-1393225-5
RY611005			AgNi 0.15	5 VDC	1-1393225-7
RY611012				12 VDC	1-1393225-9
RY611024				24 VDC	2-1393225-1
RY611048				48 VDC	2-1393225-2
RY612005	pinning 5 mm wash tight	1 form A (NO) contact	AgNi 0.15	5 VDC	2-1393225-3
RY612012				12 VDC	2-1393225-6
RY612024				24 VDC	2-1393225-9
RY612048				48 VDC	3-1393225-0
RY613005			AgSnO ₂	5 VDC	5-1419136-2
RY613012				12 VDC	3-1393225-1
RY613024				24 VDC	3-1393225-3
RY613048				48 VDC	3-1393225-4
RYA30005			AgCdO	5 VDC	1393224-1
RYA30012				12 VDC	1393224-4
RYA30024				24 VDC	1393224-6
RYA30048				48 VDC	7-1393225-7
RYA31005	pinning 3.2 mm flux proof	1 form C (CO) contact	AgNi 0.15	5 VDC	1393224-7
RYA31012				12 VDC	1393224-9
RYA31024				24 VDC	1-1393224-2
RYA31048				48 VDC	1-1393224-3
RYA32005			AgNi 0.15	5 VDC	1-1393224-4
RYA32012				12 VDC	1-1393224-6
RYA32024				24 VDC	1-1393224-8
RYA33005			AgSnO ₂	5 VDC	1-1393224-9
RYA33024				24 VDC	2-1393224-1