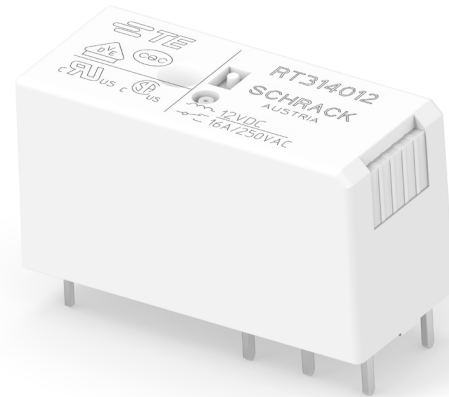


POWER PCB RELAY RT1

GENERAL PURPOSE RELAYS
PCB RELAYS

FEATURES

- 1 pole 12A/16A, 1 form C (CO) or 1 form A (NO) contact
- DC or AC coil
- 5kV/10mm coil-contact, reinforced insulation
- Ambient temperature 85°C (DC coil)
- Product in accordance to IEC 60335-1
- Reflow version: for THR (Through-Hole Reflow) soldering process



APPLICATIONS

- Boiler control
- Timers
- Garage door control
- POS automation
- Interface modules

APPROVALS

- VDE Cert. No. 40007571
- cULus E214025
- cCSAus 1142018
- CQC 20002275223 (China production)
- CQC 08001027262 (China production)
- CQC 18002197247 (monostable)

Note: Technical data of approved types on request



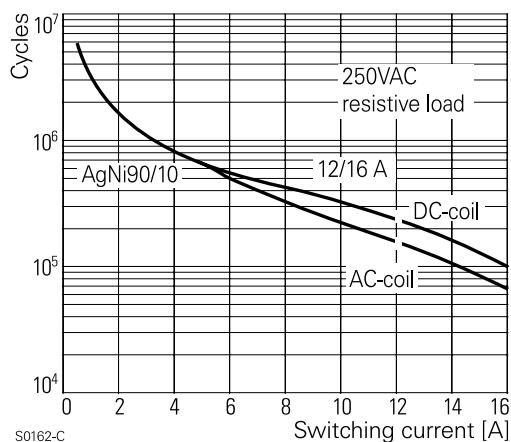
CONTACT DATA

	12A	16A
Contact arrangement	1 form C (CO) or 1 form A (NO)	
Rated voltage	250VAC	
Max. switching voltage	400VAC	
Rated voltage/ max. switching voltage AC	240/240VAC	
Rated current	12A	16A
Limiting continuous current	12A	16A, UL: 20A
Limiting making current max. 4s, duty factor 10%	25A	30A
Breaking capacity max.	3000VA	4000VA
Contact material	AgNi 90/10, AgNi 90/10 gold plated	
Frequency of operation, with/without load		
DC coil	360/72000h ⁻¹	
AC coil	360/36000h ⁻¹	
Operate/release time max., DC coil	8/6ms	
Bounce time max., DC coil, form A/form B	4/6ms	
Electrical endurance	see electrical endurance graph ¹⁾	

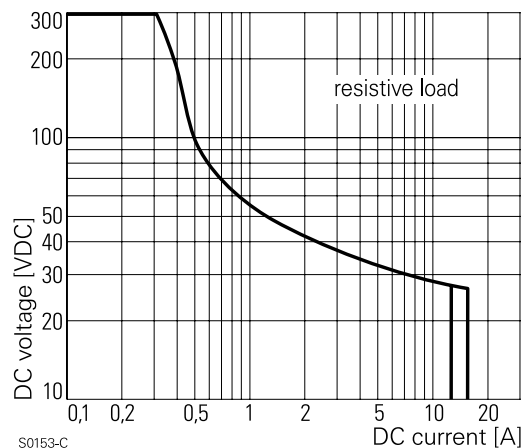
CONTACT RATINGS

Type	Contact	Load	Cycles
IEC 61810			
RT314 DC-coil	A (NO)	16A, 250VAC, cosφ=1, 85°C	30x10 ³
RT314 DC-coil	C (CO)	16A, 250VAC, cosφ=1, 85°C	10x10 ³
RT314 DC-coil	A (NO)	10A, 400VAC, cosφ=1, 85°C	150x10 ³
RT114 DC-coil	A (NO)	12A, 250VAC, cosφ=1, 85°C	50x10 ³
RT114 AC-coil	A (NO)	12A, 250VAC, cosφ=1, 70°C	100x10 ³
UL 61810-1 (former UL 508)			
RT314	A/B (NO/NC)	20A, 250VAC, general purpose, 85°C	6x10 ³
RT334	A (NO)	16A, 250VAC, gen. purpose, 85°C	50x10 ³
RT314	A (NO)	1hp, 240VAC, 40°C	1x10 ³
RT314	A (NO)	FLA/LRA, 4.5/13.1A, 480VAC, 70°C	100x10 ³
EN60947-4-1			
RT314	A (NO)	250V/2A, AC-3	6.050
EN60947-5-1			
RT314 DC-coil	A/B (NO/NC)	2A, 24VDC, DC13	6.050
RT314	A (NO)	250/3A, AC-15	6.050
EN60730-1			
RT314 DC-coil	A (NO)	12(2)A, 250VAC, 85°C	100x10 ³
1) For reflow solderable versions: actual contact performance may be influenced by the reflow soldering process.			
Mechanical endurance			
DC coil	>30x10 ⁶ operations		
AC coil	>10x10 ⁶ operations		
AC coil, reflow version	>5x10 ⁶ operations		

ELECTRICAL ENDURANCE



MAX. DC LOAD BREAKING CAPACITY



POWER PCB RELAY RT1

GENERAL PURPOSE RELAYS PCB RELAYS

COIL DATA

Coil voltage range, DC coil/ AC coil	5 to 110VDC / 24 to 230VAC
Operative range, IEC 61810	2
Coil insulation system according UL	class F

COIL VERSIONS, DC COIL

Coil code	Rated voltage VDC	Operate voltage 50 Hz VDC	Release voltage VDC	Coil resistance $\Omega \pm 10\%$	Rated coil power mW
005	5	3.5	0.5	62	403
006	6	4.2	0.6	90	400
009	9	6.3	0.9	200	400
012	12	8.4	1.2	360	400
018	18	12.6	1.8	770	420
020	20	14.0	2.0	952	420
024	24	16.8	2.4	1440	400
048	48	33.6	4.8	5520	417
060	60	42.0	6.0	8570 ²⁾	420
110	110	77.0	11.0	28800 ²⁾	420

2) Coil resistance $\pm 12\%$.

All figures are given for coil without pre-energization, at ambient temperature $+23^\circ\text{C}$. Other coil voltages on request.

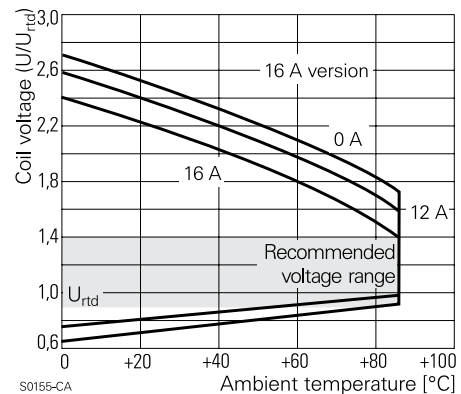
COIL VERSIONS, AC COIL 50/60Hz

Coil code	Rated voltage VAC	Operate voltage 50 Hz VAC	Release voltage 50 Hz VAC	Coil resistance Ω	Rated coil power 50 Hz VA
524	24	18.0	3.6	350 ³⁾	0.76
548	48	36.0	7.2	1420	0.74
615	115	86.3	17.3	8100	0.76
620	120	90.0	18.0	8800	0.75
700	200	150.0	30.0	24350	0.76
730	230	172.5	34.5	32500	0.74

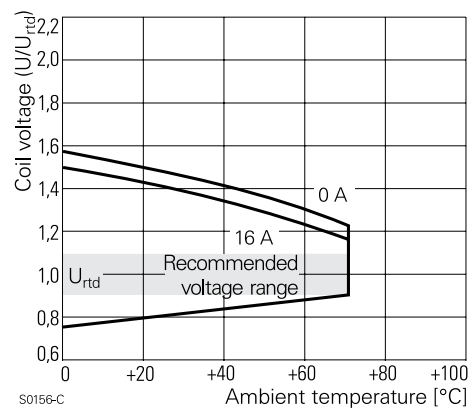
3) Coil resistance $\pm 10\%$.

All figures are given for coil without Other coil voltages on request.

COIL OPERATING RANGE DC



COIL OPERATING RANGE AC



POWER PCB RELAY RT1

GENERAL PURPOSE RELAYS PCB RELAYS

INSULATION DATA

Initial dielectric strength	
between open contacts	1000V _{rms}
between contact and coil	5000V _{rms}
Clearance/creepage	
between contact and coil	≥10/10mm
Material group of insulation parts	IIIa
Tracking index of relay base	PTI 250V
reflow version	PTI 175V

OTHER DATA

Material compliance	EU RoHS/ELV, China RoHS, REACH, Halogen content refer to the Product Compliance Support Center at www.te.com/customer-support/rohssupportcenter
Resistance to heat and fire	according EN60335, par30
Ambient temperature range	
DC coil	-40 to 85°C
AC coil	-40 to 70°C
Category of environmental protection, IEC 61810	
standard version	RTII - flux proof, RTIII - wash tight
reflow version	RTII - flux proof
Vibration resistance (functional)	
form A/form B contact, 30 to 500Hz	20g/5g
Shock resistance (destructive)	100g
Terminal type	
standard version	PCB-THT, plug-in
reflow version	PCB-THR

Mounting distance	AC coil: ≥2.5mm
Weight	14g
Packaging unit	10 pcs
Resistance to soldering heat THT, IEC 60068-2-20	
RTII	270°C/10s
RTIII	260°C/5s
Resistance to soldering heat THR	
reflow soldering (for reflow version)	forced gas convection ⁴⁾ or vapour phase ⁵⁾
temperature profile	according EN61730
Packaging/unit	tube/20 pcs., box/500 pcs.

4) infrared heating not allowed
5) recommended fluid LS/230

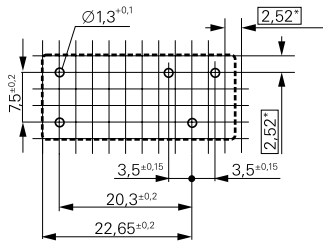
ACCESSORIES

For details see datasheet	Accessories Industrial Power Relay RT
NOTE: indicated contact ratings and electrical endurance data for direct wiring of relays (according IEC 61810-1); for relays mounted on sockets deratings may apply.	

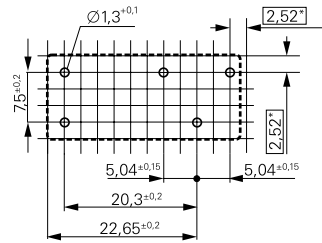
PCB LAYOUT / TERMINAL ASSIGNMENT

BOTTOM VIEW ON SOLDER PINS

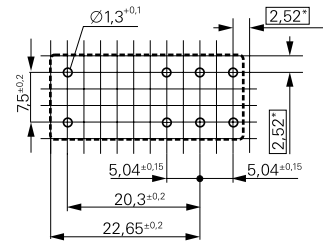
12A, pinning 3.5mm



12A, pinning 5mm

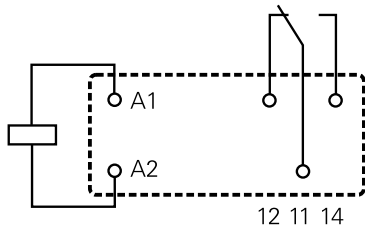


16A, pinning 5mm

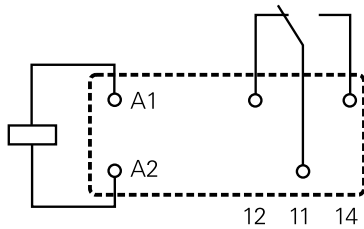


*) With the recommended PCB hole sizes a grid pattern from 2.5mm to 2.54mm can be used.

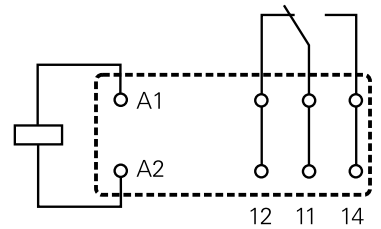
1 form C (CO) contact



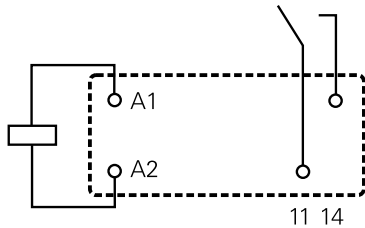
1 form C (CO) contact



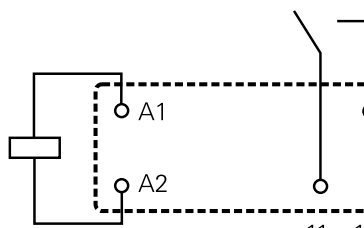
1 form C (CO) contact



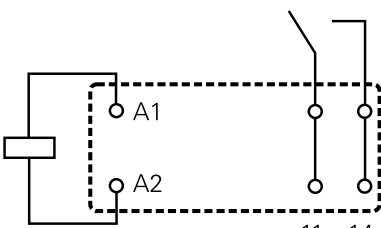
1 form A (NO) contact



1 form A (NO) contact

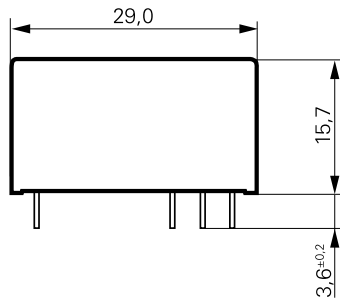


1 form A (NO) contact

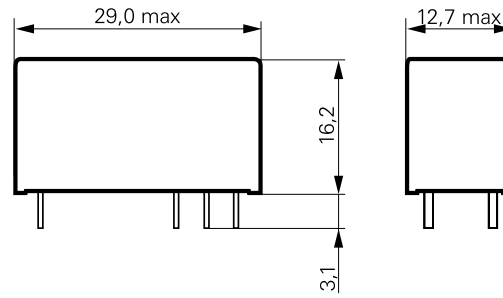


DIMENSIONS UNITS(mm)

THT version



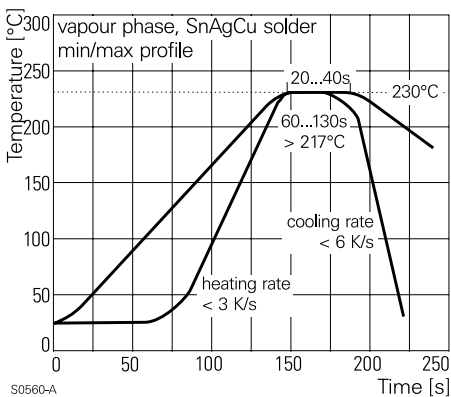
THR version (reflow solderable)



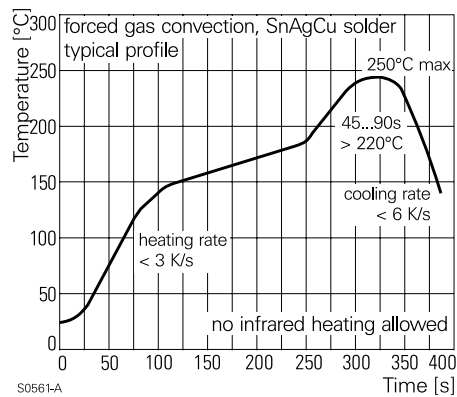
PROCESS CONDITIONS FOR REFLOW SOLDERING

according to EN61760-1

REFLOW TEMPERATURE PROFILE



REFLOW TEMPERATURE PROFILE



PRODUCT CODE STRUCTURE

Typical product code
RT 3 1 024

Type

RT	Power PCB Relay RT1
-----------	---------------------

Version

1	12A, pinning 3.5mm, flux proof
2	12A, pinning 5mm, flux proof
3	16A, pinning 5mm, flux proof
B	12A, pinning 3.5mm, wash tight (not for Reflow version)
C	12A, pinning 5mm, wash tight (not for Reflow version)
D	16A, pinning 5mm, wash tight (not for Reflow version)

Contact material

1	AgNi 90/10
3	AgNi 90/10 gold plated (for type RT31.)

Coil

Coil code	please refer to coil versions table
------------------	-------------------------------------

Version

Blank	Standard version
R	Reflow solderable

POWER PCB RELAY RT1
GENERAL PURPOSE RELAYS PCB RELAYS

PRODUCT INFORMATION

Product code	Version	Contacts	Contact material	Coil	Version	Part Number					
						Austria	China				
RT114009	12A, pinning 3.5mm, flux proof	1 form C (CO) contact	AgNi 90/10	9VDC	Standard	1393239-9	1-1649326-2				
RT114012				12VDC		1419108-1	1-1649326-3				
RT114024				24VDC		1-1393239-3	1-1649326-5				
RT114048				48VDC		1-1393239-4	1-1649326-6				
RT114110				110VDC		1-1393239-6	-				
RT114730				230VAC		1-1393239-9	-				
RT115024			AgNi 90/10 gold pl.	24VDC		2-1393239-1	3-1833000-9				
RT134012	1 form A (NO) contact		12VDC	Standard	2-1393239-6	3-1649326-1					
RT134024			24VDC		3-1393239-0	3-1649326-3					
RT134048			48VDC		3-1393239-1	3-1649326-4					
RT134110			110VDC		3-1393239-2	-					
RT214012			12VDC		5-1393239-4	1-1649327-3					
RT214024	12A, pinning 5mm, flux proof		24VDC	Standard	5-1393239-5	1-1649327-5					
RT214524			24VAC		5-1393239-9	-					
RT214730			230VAC		1419108-6	-					
RT314005	16A, pinning 5mm, flux proof	1 form C (CO) contact	AgNi 90/10	5VDC	Standard	9-1393239-1	1-1649328-0				
RT314006				6VDC		9-1393239-3	1-1649328-1				
RT314009				9VDC		9-1393239-4	-				
RT314012				12VDC		9-1393239-5	1-1649328-3				
RT314012R				12VDC		Reflow solderable	4-1415543-6	-			
RT314018				18VDC		Standard	9-1393239-7	1-1649328-4			
RT314024				24VDC			9-1393239-8	1-1649328-5			
RT314048				48VDC			1393240-1	1-1649328-6			
RT314060				60VDC			1-1649328-7	1-1649328-7			
RT314110				110VDC			1393240-3	-			
RT314524				24VAC			1393240-4	-			
RT314548				48VAC			1393240-5	-			
RT314615				115VAC			1393240-6	-			
RT314730				230VAC			1393240-7	-			
RT315024				AgNi 90/10 gold pl.			24VDC	1-1393240-4	3-1833002-7		
RT334012				1 form A (NO) contact			AgNi 90/10	12VDC	Standard	4-1393240-5	3-1649328-1
RT334024								24VDC		4-1393240-8	3-1649328-3
RT334048								48VDC		5-1393240-0	3-1649328-4

PRODUCT INFORMATION

Product code	Version	Contacts	Contact material	Coll	Version	Part Number		
						Austria	China	
RTB14005	12A, pinning 3.5mm, wash tight	1 form C (CO) contact	AgNi 90/10	Standard		1-1393238-2	1649326-1	
RTB14012						1-1393238-5	1649326-4	
RTB14024						1-1393238-9	1649326-6	
RTB14524						2-1393238-4	-	
RTB34012						3-1393238-0	2-1649326-2	
RTC14024	12A, 5mm, wash tight	1 form A (NO)				24VDC	5-1393238-0	1649327-6
RTD14005	16A, pinning 5mm, wash tight					5VDC	5-1393238-9	1649328-1
RTD14012		12VDC				6-1393238-2	1649328-4	
RTD14024		24VDC				6-1393238-8	1649328-6	
RTD14048		48VDC				6-1393238-9	1649328-7	
RT214005		12A, pinning 5mm, flux proof				1 form C (CO) contact	5VDC	-
RT234012	12VDC	-					1-1649327-3	
RT234024	12A, pinning 3.5mm, wash tight	1 form A (NO) contact				24VDC	-	1-1649327-5
RTB14048	48VDC					-	1649326-7	
RTB34005	5VDC					-	1-1649326-9	
RTD14060	60VDC					-	1649328-8	
RTD34012	12VDC					-	2-1649328-2	
RTD34015	15VDC					-	4-1833002-0	
RTD34024	24VDC					-	2-1649328-4	

te.com

©2025 TE Connectivity plc. family of companies. All Rights Reserved.

TE Connectivity, TE connectivity (logo) and Every Connection Counts are trademarks owned or licensed by the TE Connectivity plc. family of companies. All other logos, products and/or company names referred to herein might be trademarks of their respective owners.

While TE has made every reasonable effort to ensure the accuracy of the information in this document, TE does not guarantee that it is error-free, nor does TE make any other representation, warranty or guarantee that the information is accurate, correct, reliable or current. TE reserves the right to make any changes to the information contained herein without prior notice. TE Connectivity assumes only those obligations set forth in the terms and conditions for this product and shall in no event be liable for any incidental, indirect, or consequential damages arising out of the sale, resale, use, or misapplication of the product. TE expressly disclaims any implied warranties with respect to the information contained herein, including, but not limited to, implied warranties of merchantability or fitness for a particular purpose. Dimensions, specifications and/or information contained herein are for reference purposes only and are subject to change without notice. Consult TE for the latest dimensions, specifications and/or information. Users of TE Connectivity products must make their own assessment as to whether the respective product is suitable for the respective desired application.

04/25 ED