

KC Series Make & Break Load Switching — 15 kV Relays

REVISIONS				
REV.	ECO	DESCRIPTION	DATE	APPROVED
A	-	INITIAL DRAWING	09JUL2020	JR

KC-2 No Load Switching Product Facts

- Vacuum dielectric for low and stable contact resistance
- Carries 50 Amps at DC; 10 Amps at 32 MHz
- Not designed for power switching

KC-8 Product Facts for KC-8

- Not recommended for new design. See KC-14 on page 7-82 for replacement.

KC-11 No Load Switching Product Facts

- Threaded base version of KC-2
- Vacuum dielectric for low leakage current applications

KC-12 Product Facts

- Not recommended for new design. See KC-18 on page 7-67 for replacement.
- Vacuum dielectric for power switching low current loads

Product Specifications for KC-2, KC-8, KC-11 and KC-12

Contact Arrangement — SPDT

Contact Form — C

Test Voltage, DC or 60 Hz (Peak) — 17 kV

Rated Operating Voltage (Peak) — DC or 60 Hz — 15 kV
 2.5 MHz — KC-2 and KC-11 — 12 kV
 16 MHz — KC-2 and KC-11 — 9 kV
 32 MHz — KC-2 and KC-11 — 7 kV

Continuous Carry Current, Max. — DC or 60 Hz — KC-2 and KC-11 — 50 A
 KC-8 and KC-12 — 30 A
 2.5 MHz — KC-2 and KC-11 — 30 A
 16 MHz — KC-2 and KC-11 — 17 A
 32 MHz — KC-2 and KC-11 — 10 A
 Coil Hi-Pot (Vrms, 60 Hz) — 500 A

For factory-direct application assistance, dial 800-253-4560, ext. 2055, or 805-220-2055.

Contact Capacitance —
 Between Open Contacts — 0.5 pF
 Open Contacts to Ground — 1 pF

Contact Resistance, Max. —
 KC-2 and KC-11 — 0.012 ohm
 KC-8 and KC-12 — 0.025 ohm

Operate Time, Max. — 15 ms

Release Time, Max. — 9 ms

Shock, 11ms, 1/2 Sine (Peak) — 50 g

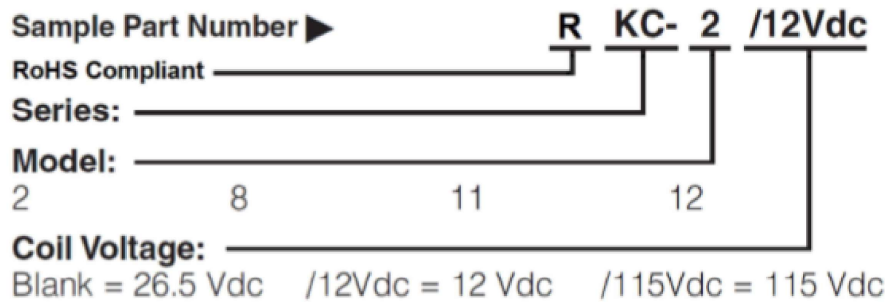
Vibration —
 Peak — 10 g (55 to 500 Hz)

Operating Ambient Temperature Range — -55°C to +125°C

Mechanical Life — 1 million cycles

Weight, Nominal — 85 g (3 oz.)

Ordering Information



TITLE
RKC- 2,8,11,12 MAKE AND BREAK LOAD SWITCHING

DWG NO.
RKC- 2,8,11,12 - SERIES

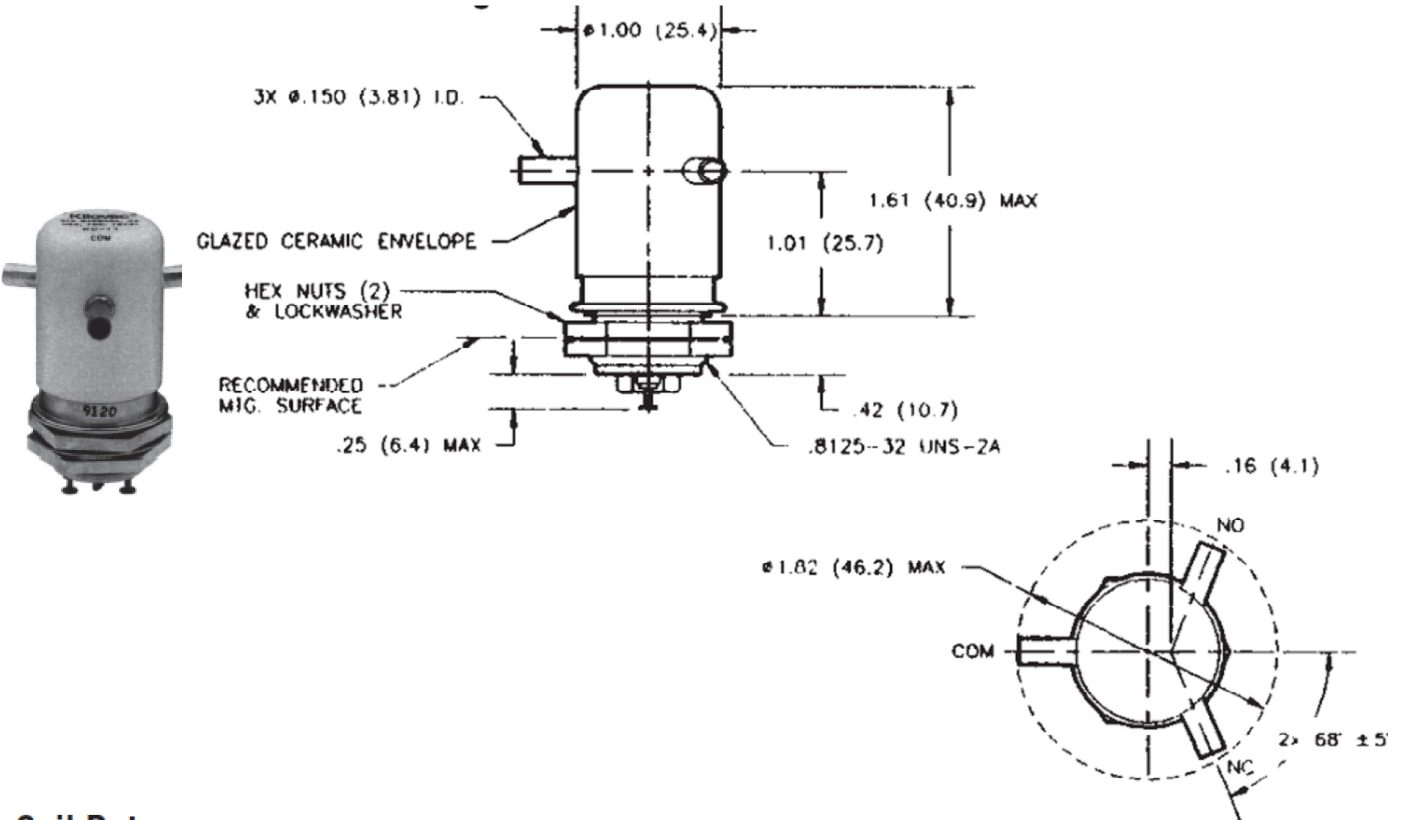
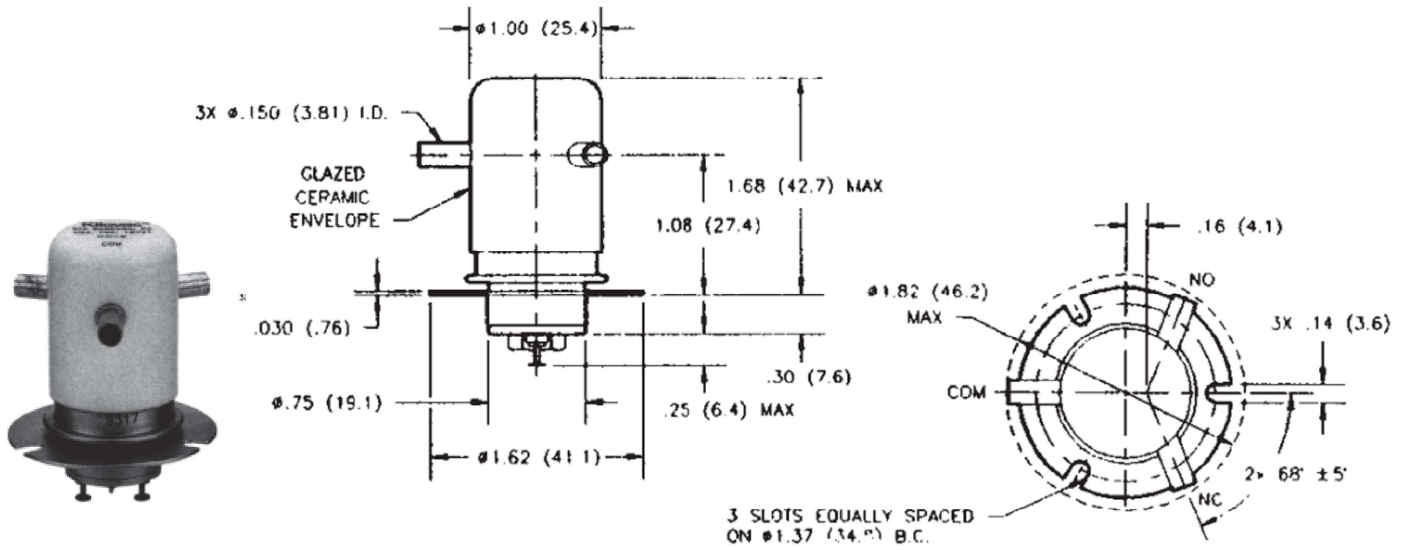
DS DATA SHEET

CAGE CODE
-

SCALE
NONE

SHEET
1 OF 2

REV
A




Coil Data

Nominal Volts DC	12 Vdc	26.5 Vdc	115 Vdc
Pickup, Max.	8 Vdc	16 Vdc	80 Vdc
Dropout	.5-5 Vdc	1-10 Vdc	5-50 Vdc
Coil Resistance ($\pm 10\%$)			
KC-2 and KC-11	60 Ω	250 Ω	3500 Ω
KC-8 and KC-12	48 Ω	180 Ω	2900 Ω

Ratings listed are for 25°C, sea level conditions

ALL DIMENSIONS ARE IN INCHES(mm)

 TE CONNECTIVITY CARPINTERIA, CA 93013	TITLE			RKC- 2,8,11,12 MAKE AND BREAK LOAD SWITCHING	
	DWG NO.			RKC- 2,8,11,12 - SERIES	
DS	DATA SHEET	CAGE CODE	SCALE	SHEET	REV
		-	NONE	2 OF 2	A