

HC Series — 8 kV Relays

REVISIONS				
REV.	ECO	DESCRIPTION	DATE	APPROVED
A	-	INITIAL DRAWING	09JUL2020	JR

HC-2
No Load Switching

HC-4
Make & Break Load Switching

Product Facts for HC-2

- Vacuum dielectric and copper contacts for high current carry rating of 25 Amps
- Not designed for power switching
- Stable, low contact resistance
- Meets requirements of MIL-R-83725

HC-6
Make Only Load Switching

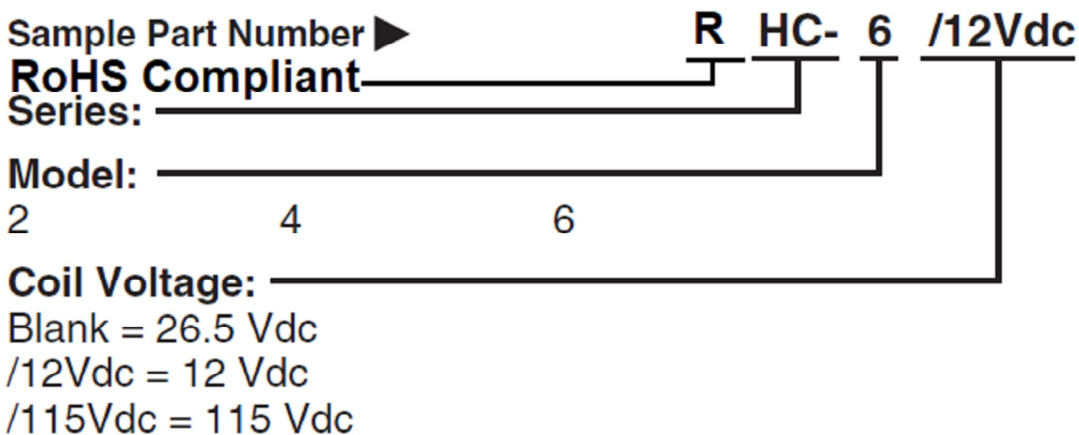
Product Facts for HC-6


- Tungsten contacts for switching high in-rush loads
- SF-6 gas-filled for capacitive discharge applications
- Suitable for ESD testing applications
- Tungsten contacts for long life in power switching applications

Product Facts for HC-4

- Tungsten contacts for long life in power switching applications
- Vacuum dielectric for arc suppression when making or breaking a load

Ordering Information



 TE CONNECTIVITY CARPINTERIA, CA 93013		TITLE		
		RHC 2,4,6 – SERIES 8 KV RELAYS		
DS		DATA SHEET		CAGE CODE
		—		SCALE
DATA SHEET		—		SCALE
		—		NONE
DATA SHEET		—		SHEET
		—		1 OF 3
DATA SHEET		—		REV
		—		A

**Product Specifications for
HC-2, HC-4 and HC-6**

Contact Arrangement — SPDT

Contact Form — C

Test Voltage, DC or 60 Hz (Peak) —
10 kV

Rated Operating Voltage (Peak) —
DC or 60 Hz — 8 kV

Continuous Carry Current, Max. —
DC or 60 Hz — HC-2 — 25 A RMS
HC-4 — 15 A RMS
HC-6 — 8 A RMS

Coil Hi-Pot (Vrms, 60 Hz) — 500 A RMS

Contact Capacitance —
Between Open Contacts — N/A
Open Contacts to Ground — N/A

Contact Resistance, Max. —
HC-2 — 0.01 ohm
HC-4 — 0.02 ohm
HC-6 — 0.5 ohm*

Operate Time, Max. — 6 ms

Release Time, Max. — 6 ms

Shock, 11ms, 1/2 Sine (Peak) —
50 g

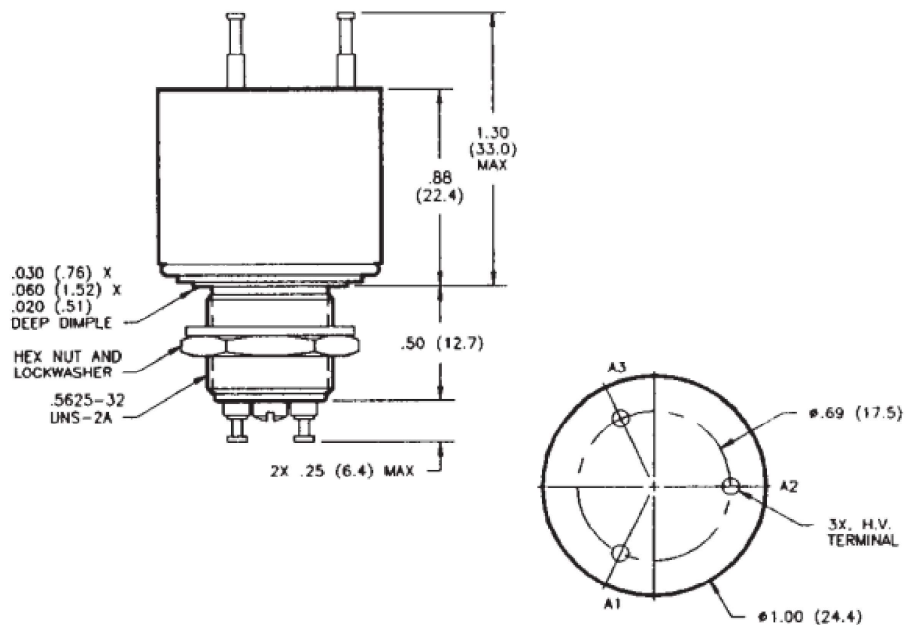
Vibration —
Peak — 10 g (55 to 2000 Hz)

**Operating Ambient Temperature
Range** — -55°C to +125°C

Mechanical Life —
HC-2 and HC-4 — 2 million cycles
HC-6 — 1 million cycle

Weight, Nominal —
39.69 g (1.4 oz.)

*Contact resistance for gas-filled
relays is measured at 28 Vdc, 1 Amp



ALL DIMENSIONS ARE IN INCHES(mm)



TE CONNECTIVITY
CARPINTERIA, CA 93013

TITLE

RHC 2,4,6 - SERIES 8 KV RELAYS

DWG NO.

RHC- 2,4,6 - SERIES

DS

DATA SHEET

CAGE CODE

—

SCALE

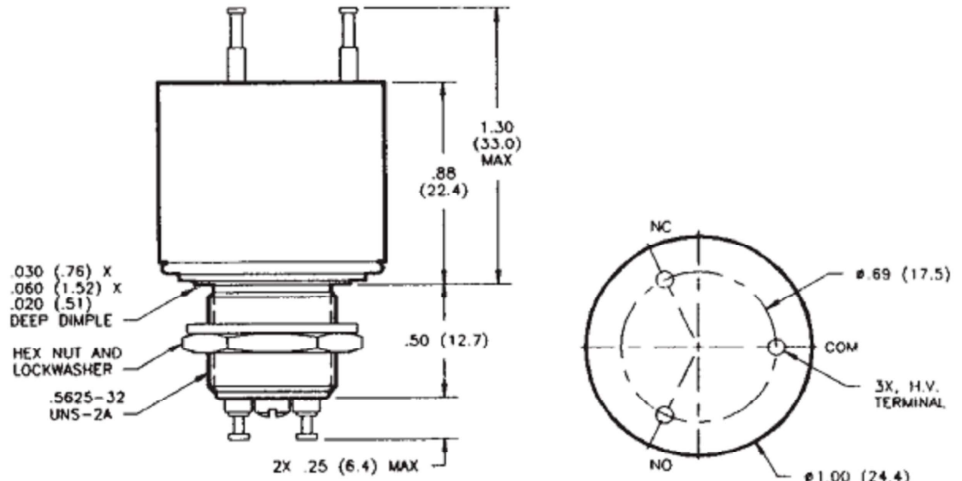
NONE

SHEET

2 OF 3

REV

A



■ Meets requirements of MIL-R-83725

Coil Data

Nominal Volts DC	12 Vdc	26.5 Vdc	115 Vdc
Pickup, Max.	8 Vdc	16 Vdc	80 Vdc
Dropout	.5-5 Vdc	1-10 Vdc	5-50 Vdc
Coil Resistance ($\pm 10\%$)	80 Ω	335 Ω	6000 Ω

Ratings listed are for 25°C, sea level conditions

ALL DIMENSIONS ARE IN INCHES(mm)



TE CONNECTIVITY
CARPINTERIA, CA 93013

TITLE

RHC 2,4,6 – SERIES 8 KV RELAYS

DWG NO.

RHC– 2,4,6 – SERIES

DS DATA SHEET

CAGE CODE
—

SCALE
NONE

SHEET
3 OF 3

REV
A