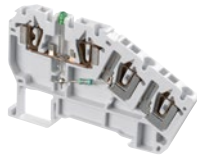
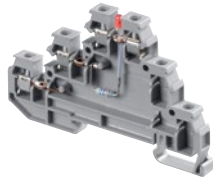


SENSOR/ACTUATOR TERMINAL BLOCKS

Screwclamp, Spring and ADO Sytem[®], technology

Dedicated applications terminal blocks

Sensors / Actuators



Technologies presentation	2
Overview	3

Screw clamp technology

2 wire sensor

2.5 mm ² / 12 AWG	D2.5/6.DP	4
------------------------------	------------------	---

3 wire sensor

2.5 mm ² / 12 AWG	D2.5/6.DA	5
	D2.5/6.D	6
	D2.5/6.DL	7
	D2.5/6.DAL	8
	With red led	7
	With green led	8

Thermocouple

MTC6	9
-------------	---

Spring clamp technology

3 wire sensor

1.5 mm ² / 16 AWG	D2.5/5.C3.L	10
	D2.5/5.C3.L.L	11
	With green led	11

4 wire sensor

1.5 mm ² / 16 AWG	D2.5/5.C4.L	12
	D2.5/5.C4.L.L	13
	With green led	13

ADO-ADO technology

3 wire sensor

1 mm ² / 20 AWG	D1/5.C3.ADO	14
	D1/5.C3.ADO.L	15
	With green led	15

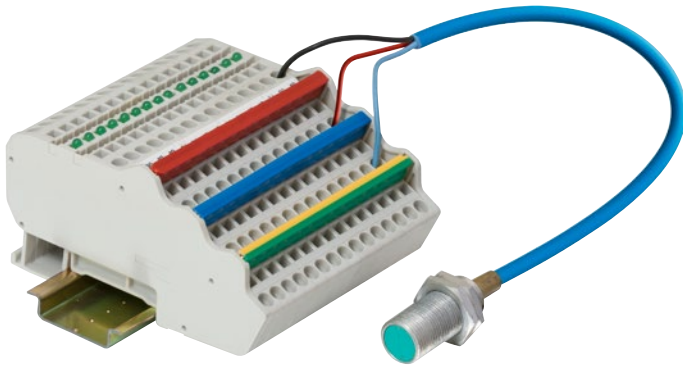
4 wire sensor

1 mm ² / 20 AWG	D1/5.C4.ADO	16
	D1/5.C4.ADO.L	17
	With green led	17

Dedicated applications terminal blocks

Sensors / Actuators

The smart choice for process automation applications



Process automation applications typically require the use of a large number of digital or analog signals and sensors. The space constraint is often an issue in regards to this large volume of signals to handle.

TE Connectivity sensor and actuator terminal blocks reduce the installation costs, speed the wiring and ease commissioning thanks to:

- Compact multi deck terminals blocks for 3 & 4 wire sensors
- Potentials distribution via jumper (positive, negative, ground)
- Signal indication via LED for circuit status indication.

Select from our large choice of solutions and technologies

Classic and compact screw clamp terminal blocks

The product family features very compact dimensions. It is the preferred choice for small junction boxes when panel height is a constraints. Our terminals are compatible with:

- 2 wire and 3 wire sensors
- PNP & NPN sensors.

Convenient and ergonomic spring clamp terminal blocks

The product family features popular spring technology particularly appreciated in process industry.

Our product family offers:

- Compatibility with 2, 3 and 4 wire sensors
- Compatibility with NPN and PNP sensors thanks to bidirectional LED indicators
- Color coded 34 poles plug-in jumpers adapted to popular PLC I/O cards configurations (8, 16, 32 channels).

ADO System® terminal blocks: experience the fastest and most reliable connection on the market

Our exclusive ADO System® combines speed on connection with top reliability of connection. Our product family offers:

- Compatibility with 2, 3 and 4 wire sensors
- Compatibility with NPN and PNP sensors thanks to bidirectional LED indicators
- Color coded 66 poles plug-in jumpers adapted to all PLC I/O cards configurations (8,16, 32 & 64 channels).

Universal thermocouple terminal block

This terminal block allows connection of all types of temperature thermocouple sensors. Its exclusive design allows thermocouple wire extension with no loss of signal integrity. Learn more in the related page of our catalog.



Screw clamp terminal block



Spring terminal block



ADO System® terminal block



Thermocouple terminal block

Dedicated applications terminal blocks

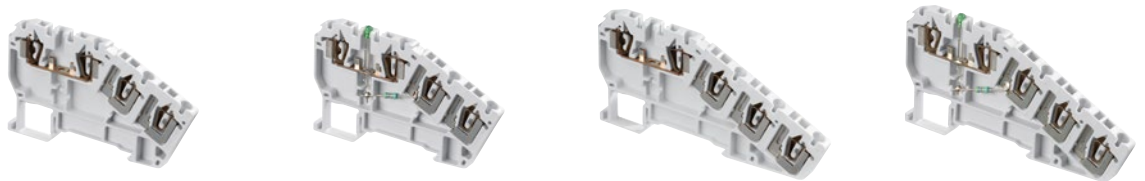
Sensors / Actuators

Screw clamp technology



Section		2 wire sensor		3 wire sensor			Thermocouple
IEC	UL/CSA						
2.5 mm²	12 AWG	D2.5/6.DP 6 mm 0.236 in	D2.5/6.DA 6 mm 0.236 in	D2.5/6.D 6 mm 0.236 in	D2.5/6.DL 6 mm 0.236 in	D2.5/6.DAL 6 mm 0.236 in	MTC6 6 mm 0.236 in

Spring clamp technology



Section		3 wire sensor		4 wire sensor	
IEC	UL/CSA				
1.5 mm²	16 AWG	D2.5/5.C3.L 5 mm 0.197 in	D2.5/5.C3.L.L 5 mm 0.197 in	D2.5/5.C4.L 5 mm 0.197 in	D2.5/5.C4.L.L 5 mm 0.197 in

ADO - ADO technology

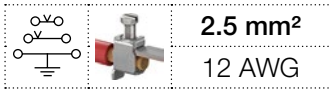


Section		3 wire sensor		4 wire sensor	
IEC	UL/CSA				
1 mm²	20 AWG	D1/5.C3.ADO 5 mm 0.197 in	D1/5.C3.ADO.L 5 mm 0.197 in	D1/5.C4.ADO 5 mm 0.197 in	D1/5.C4.ADO.L 5 mm 0.197 in

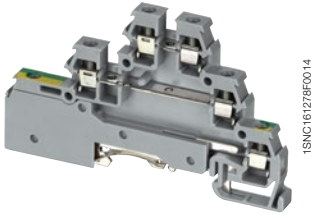
1SNC16006830201

D2.5/6.DP screw clamp terminal blocks

Double deck + ground - 6 mm 0.236 in spacing

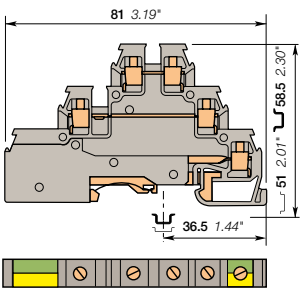


2.5 mm²
12 AWG



1SNC161278P0014

D2.5/6.DP



6 mm 0.236 in spacing

Description

- Save space with triple deck terminal blocks: 2 independent circuits in just 6 mm 0.236 in spacing,
- Adapted for 2 wires sensor/actuator with ground.

Ordering details

Description	Color	Type	Part Number	Pkg qty	Weight (1 pce)
Feed-through + ground For 2 wires sensor with ground - 2 feed-through circuits - 1 ground circuit	Grey, Green-Yellow	D2.5/6.DPA1	1SNA115643R2700	25	16.00

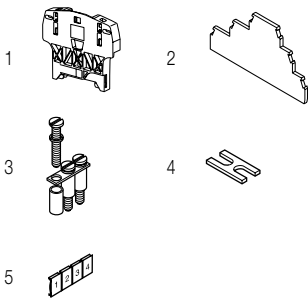
Main technical data

Connecting capacity		IEC	UL	CSA	Mounting instructions	
1 conductor per clamp	Rigid: Solid/Stranded	0.2-2.5 mm ²	20-12 AWG	22-14 AWG	Rail	TH 35-7.5, TH 35-15
	Flexible without ferrule	0.22-2.5 mm ²			Wire stripping length	6 mm 0.24 in
	Flexible with insulated ferrule				Tool	Flat screwdriver Ø 3.5 mm Ø 0.138 in
	Gauge	A2				
Rated current / Rated cross section		22 A / 2.5 mm ²	26 A / 12 AWG	20 A / 14 AWG		
Rated short-time withstand current (1s)		300 A			Torque	0.4 - 0.6 N.m 3.5 - 5.3 lb.in
Rated voltage		380 V	300 V	300 V		
Impulse withstand voltage						
Protection		IP20	NEMA 1			

The connecting capacity data for one Rigid: Solid/Stranded, or one Flexible conductor (when applicable) is a mandatory information required by IEC, UL and CSA standards (Copper conductors). All other data are provided as supplementary information only. For more details, please consult our CB, UL or CSA certificates and technical datasheet available on <http://www.TE.com>

CE	RoHS	RoHS	USR	CSA	Gost R
----	------	------	-----	-----	--------

Accessories



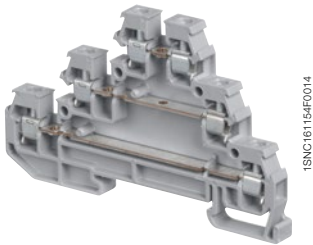
Description	Color	Type	Part Number	Pkg qty	Weight (1 pce)
1 End stops 10 mm 0.394 in	Dark grey	BAZH1	1SNK900102R0000	20	24.00
2 End sections 3 mm 0.118 in	Grey	FED3E	1SNA116771R2000	20	3.80
3 Jumper bars 2 poles 22 A		BJD6	1SNA178024R2500	10	1.00
			1SNA178025R2600	10	2.00
			1SNA178026R2700	10	2.00
			1SNA178027R2000	10	3.00
			1SNA178032R2500	10	6.00
			1SNA178033R2600	5	12.00
4 Cross spacing jumpers 5 mm 0.200 in - 6 mm 0.236 in - 8 mm 0.315 in		EL61	1SNA177812R1700	10	0.10
5 Terminal block markers Blank card	White	RC65	1SNA232000R0000	1	3.60

Complete list of accessories is indicated in the terminal block datasheet. Some accessories such as jumper bars may modify the terminal block's ratings: complete information in the accessories catalogue pages.

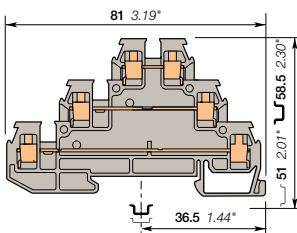
Technical data valid for copper conductors only.

D2.5/6.DA screw clamp terminal blocks

Triple deck - 6 mm 0.236 in spacing



D2.5/6.DA



6 mm 0.236 in spacing

Description

- Save space with triple deck terminal blocks: 3 independent circuits connected in just 6 mm 0.236 in spacing,
- Adapted for 3 wires sensor/actuator.

Ordering details

Description	Color	Type	Part Number	Pkg qty	Weight (1 pce) g
Feed-through For 3 wires sensor - 3 feed-through circuits	Grey <input type="checkbox"/>	D2.5/6.DA	1SNA115541R1100	25	13.00
	Blue <input type="checkbox"/>	D2.5/6.DA.N	1SNA125541R1300		

Main technical data

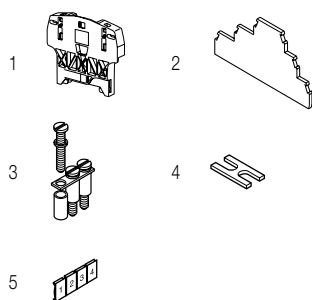
Connecting capacity	IEC	UL	CSA
1 conductor per clamp	Rigid: Solid/Stranded	0.2-2.5 mm ²	20-12 AWG
	Flexible without ferrule	0.22-2.5 mm ²	22-14 AWG
	Flexible with insulated ferrule		
Gauge	A2		
Rated current / Rated cross section	22 A / 2.5 mm ²	26 A / 12 AWG	20 A / 14 AWG
Rated short-time withstand current (1s)	300 A		
Rated voltage	380 V	300 V	300 V
Impulse withstand voltage			
Protection	IP20	NEMA 1	

Mounting instructions

Rail		TH 35-7.5, TH 35-15
Wire stripping length		6 mm 0.24 in
Tool		Flat screwdriver Ø 3.5 mm Ø 0.138 in
Torque		0.4 - 0.6 N.m 3.5 - 5.3 lb.in

The connecting capacity data for one Rigid: Solid/Stranded, or one Flexible conductor (when applicable) is a mandatory information required by IEC, UL and CSA standards (Copper conductors). All other data are provided as supplementary information only, for more details, please consult our CB, UL or CSA certificates and technical datasheet available on <http://www.TE.com>

--	--	--	--	--	--	--	--	--	--



Accessories

Description	Color	Type	Part Number	Pkg qty	Weight (1 pce) g
1 End stops 10 mm 0.394 in	Dark grey <input type="checkbox"/>	BAZH1	1SNK900102R0000	20	24.00
2 End sections 3 mm 0.118 in	Grey <input type="checkbox"/>	FED3E	1SNA116771R2000	20	3.80
3 Jumper bars 2 poles 22 A		BJD6	1SNA178024R2500	10	1.00
			1SNA178025R2600	10	2.00
			1SNA178026R2700	10	2.00
			1SNA178027R2000	10	3.00
			1SNA178032R2500	10	6.00
4 Cross spacing jumpers 5 mm 0.200 in - 6 mm 0.236 in - 8 mm 0.315 in		EL61	1SNA177812R1700	10	0.10
5 Terminal block markers Blank card	White <input type="checkbox"/>	RC65	1SNA232000R0000	1	3.60

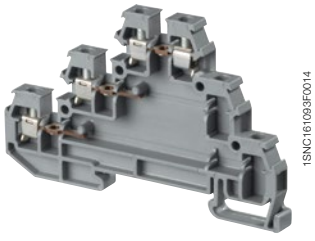
Complete list of accessories is indicated in the terminal block datasheet.

Some accessories such as jumper bars may modify the terminal block's ratings: complete information in the accessories catalogue pages.

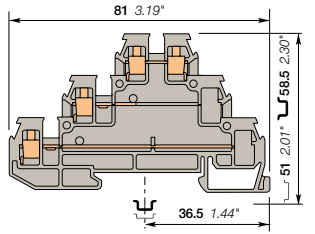
Technical data valid for copper conductors only.

D2.5/6.D screw clamp terminal blocks

Sensors / Actuators - 6 mm 0.236 in spacing



D2.5/6.D



6 mm 0.236 in spacing

Description

Save space with triple deck terminal blocks: adapted for 3 wires sensor/actuator in just 6 mm 0.236 in spacing.

Ordering details

Description	Color	Type	Part Number	Pkg pce	Weight (1 pce) g
Sensor For 3 wire sensor with a jumper channel on each deck	Grey <input type="checkbox"/>	D2.5/6.D	1SNA115542R1200	25	10.00

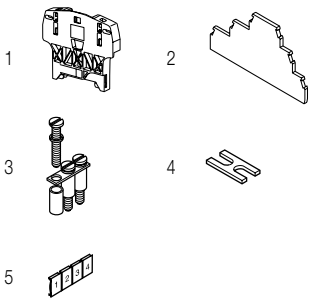
Main technical data

		IEC	UL	CSA	Mounting instructions	
1 conductor per clamp	Rigid: Solid/Stranded	0.2-2.5 mm ²	20-12 AWG	22-14 AWG	Rail	TH 35-7.5, TH 35-15
	Flexible without ferrule	0.22-2.5 mm ²			Wire stripping length	6 mm 0.24 in
	Flexible with insulated ferrule				Tool	Flat screwdriver Ø 3.5 mm Ø 0.138 in
	Gauge	A2			Torque	0.4 - 0.6 Nm 3.5 - 5.3 lb.in
Rated current / Rated cross section		22 A / 2.5 mm ²	26 A / 12 AWG	20 A / 14 AWG		
Rated short-time withstand current (1s)		300 A				
Rated voltage		380 V	300 V	300 V		
Impulse withstand voltage						
Protection		IP20	NEMA 1			

The connecting capacity data for one Rigid: Solid/Stranded, or one Flexible conductor (when applicable) is a mandatory information required by IEC, UL and CSA standards (Copper conductors). All other data are provided as supplementary information only. For more details, please consult our CB, UL or CSA certificates and technical datasheet available on <http://www.TE.com>

--	--	--	--	--	--	--	--	--

Accessories



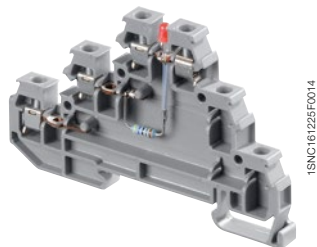
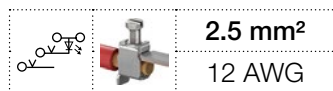
Description	Color	Type	Part Number	Pkg pce	Weight (1 pce) g
1 End stops 10 mm 0.394 in	Dark grey <input type="checkbox"/>	BAZH1	1SNK900102R0000	20	24.00
2 End sections 3 mm 0.118 in	Grey <input type="checkbox"/>	FED3E	1SNA116771R2000	20	3.80
3 Jumper bars 2 poles 22 A		BJD6	1SNA178024R2500	10	1.00
			1SNA178025R2600	10	2.00
			1SNA178026R2700	10	2.00
			1SNA178027R2000	10	3.00
			1SNA178032R2500	10	6.00
			1SNA178033R2600	5	12.00
4 Cross spacing jumpers 5 mm 0.200 in - 6 mm 0.236 in - 8 mm 0.315 in		EL61	1SNA177812R1700	10	0.10
5 Terminal block markers Blank card	White <input type="checkbox"/>	RC65	1SNA232000R0000	1	3.60

Complete list of accessories is indicated in the terminal block datasheet. Some accessories such as jumper bars may modify the terminal block's ratings: complete information in the accessories catalogue pages.

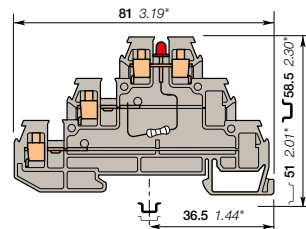
Technical data valid for copper conductors only.

D2.5/6.D screw clamp terminal blocks

Sensors / Actuators - 6 mm 0.236 in spacing



D2.5/6.D



6 mm 0.236 in spacing

Description

- Save space with triple deck terminal blocks: adapted for 3 wires sensor/actuator in just 6 mm 0.236 in spacing,
- Quickly identify the signal circuit status thanks to the indicator.

Ordering details

Description	Color	Type	Part Number	Pkg pce	Weight (1 pce) g
Sensor For 3 wire sensor PNP with red 24 V DC LED and a jumper bar channel on middle and lower deck	Grey <input type="checkbox"/>	D2.5/6.DL	1SNA115537R0500	25	10.00

Main technical data

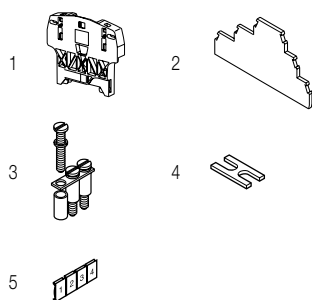
	IEC	UL	CSA
1 conductor per clamp			
Rigid: Solid/Stranded	0.2-2.5 mm ²	20-12 AWG	22-14 AWG
Flexible without ferrule	0.22-2.5 mm ²		
Flexible with insulated ferrule			
Gauge	A2		
Rated current / Rated cross section	22 A / 2.5 mm ²	26 A / 12 AWG	20 A / 14 AWG
Rated short-time withstand current (1s)	300 A		
Rated voltage	380 V	300 V	300 V
Impulse withstand voltage			
Protection	IP20	NEMA 1	

Mounting instructions

Rail		TH 35-7.5, TH 35-15
Wire stripping length		6 mm 0.24 in
Tool		Flat screwdriver Ø 3.5 mm Ø 0.138 in
Torque		0.4 - 0.6 Nm 3.5 - 5.3 lb.in

The connecting capacity data for one Rigid: Solid/Stranded, or one Flexible conductor (when applicable) is a mandatory information required by IEC, UL and CSA standards (Copper conductors). All other data are provided as supplementary information only. For more details, please consult our CB, UL or CSA certificates and technical datasheet available on <http://www.TE.com>

CE	RoHS	USR	CSA	Gost R



Accessories

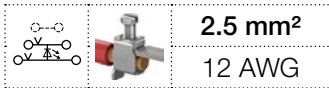
Description	Color	Type	Part Number	Pkg pce	Weight (1 pce) g
1 End stops 10 mm 0.394 in	Dark grey <input type="checkbox"/>	BAZH1	1SNK900102R0000	20	24.00
2 End sections 3 mm 0.118 in	Grey <input type="checkbox"/>	FED3E	1SNA116771R2000	20	3.80
3 Jumper bars 2 poles 22 A		BJD6	1SNA178024R2500	10	1.00
3 poles			1SNA178025R2600	10	2.00
4 poles			1SNA178026R2700	10	2.00
5 poles			1SNA178027R2000	10	3.00
10 poles			1SNA178032R2500	10	6.00
20 poles			1SNA178033R2600	5	12.00
4 Cross spacing jumpers 5 mm 0.200 in - 6 mm 0.236 in - 8 mm 0.315 in		EL61	1SNA177812R1700	10	0.10
5 Terminal block markers Blank card	White <input type="checkbox"/>	RC65	1SNA232000R0000	1	3.60

Complete list of accessories is indicated in the terminal block datasheet. Some accessories such as jumper bars may modify the terminal block's ratings: complete information in the accessories catalogue pages.

Technical data valid for copper conductors only.

D2.5/6.DAL screw clamp terminal blocks

Sensors / Actuators - 6 mm 0.236 in spacing



2.5 mm²
12 AWG

Description

- Save space with triple deck terminal blocks: 2 independent circuits connected in just 6 mm 0.236 in spacing,
- Adapted for 3 wires sensor/actuator,
- Quickly identify the signal circuit status thanks to the indicator.

Ordering details

Description	Color	Type	Part Number	Pkg pce	Weight (1 pce) g
Sensor Power block with green LED 24 V DC for 3 wires sensor and a jumper bar	Grey <input type="checkbox"/>	D2.5/6.DAL2	1SNA115547R1700	25	12.00

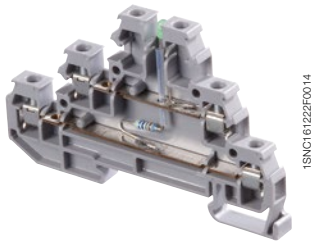
Main technical data

	IEC	UL	CSA
1 conductor per clamp	Rigid: Solid/Stranded Flexible without ferrule Flexible with insulated ferrule Gauge	0.2-2.5 mm ² 0.22-2.5 mm ² A2	20-12 AWG 22-14 AWG
Rated current / Rated cross section	22 A / 2.5 mm ²	26 A / 12 AWG	20 A / 14 AWG
Rated short-time withstand current (1s)	300 A	300 V	300 V
Rated voltage	380 V	300 V	300 V
Impulse withstand voltage			
Protection	IP20	NEMA 1	

Mounting instructions

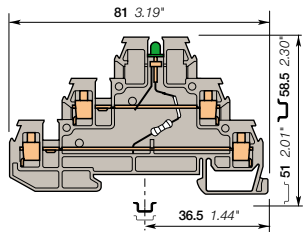
Rail		TH 35-7.5, TH 35-15
Wire stripping length		6 mm 0.24 in
Tool		Flat screwdriver Ø 3.5 mm Ø 0.138 in
Torque		0.4 - 0.6 Nm 3.5 - 5.3 lb.in

The connecting capacity data for one Rigid: Solid/Stranded, or one Flexible conductor (when applicable) is a mandatory information required by IEC, UL and CSA standards (Copper conductors). All other data are provided as supplementary information only. For more details, please consult our CB, UL or CSA certificates and technical datasheet available on <http://www.TE.com>



1SNC16122P0014

D2.5/6.DAL

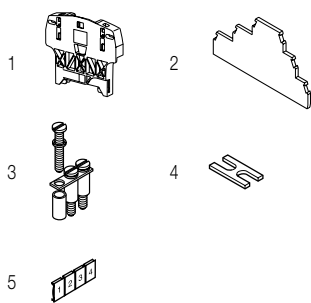


6 mm 0.236 in spacing

Accessories

Description	Color	Type	Part Number	Pkg pce	Weight (1 pce) g
1 End stops 10 mm 0.394 in	Dark grey <input type="checkbox"/>	BAZH1	1SNK900102R0000	20	24.00
2 End sections 3 mm 0.118 in	Grey <input type="checkbox"/>	FED3E	1SNA116771R2000	20	3.80
3 Jumper bars 2 poles 22 A		BJD6	1SNA178024R2500	10	1.00
3 poles			1SNA178025R2600	10	2.00
4 poles			1SNA178026R2700	10	2.00
5 poles			1SNA178027R2000	10	3.00
10 poles			1SNA178032R2500	10	6.00
20 poles			1SNA178033R2600	5	12.00
4 Cross spacing jumpers 5 mm 0.200 in - 6 mm 0.236 in - 8 mm 0.315 in		EL61	1SNA177812R1700	10	0.10
5 Terminal block markers Blank card	White <input type="checkbox"/>	RC65	1SNA232000R0000	1	3.60

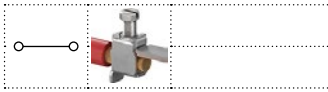
Complete list of accessories is indicated in the terminal block datasheet. Some accessories such as jumper bars may modify the terminal block's ratings: complete information in the accessories catalogue pages.



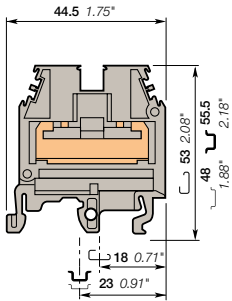
Technical data valid for copper conductors only.

MTC6 thermocouple terminal blocks

Screw clamp - 6 mm 0.236 in spacing



MTC6



6 mm 0.236 in spacing

Description

- Universal terminal block adapted to all type of thermocouples,
- Allow thermocouple wire extension with no loss of signal integrity,
- Compatible with solid type thermocouple wires,
- Reduced inventory: only one part number needed for all configurations.

Ordering details

Description	Color	Type	Part Number	Pkg pce	Weight (1 pce) g
Feed-through	Grey	MTC6	1SNA115206R2200	50	20
		MTC6.Ex	1SNA146227R2500	50	20

Main technical data

	NFC	DIN		
Wire size	2 rigid thermocouple conductors 0.9 to 1.5		Rail	G32, TH 35-7.5, TH 35-15
Rated voltage	500 V		Wire stripping length	31 mm 1.22 in
Rated voltage Ex e (MTC6.Ex)	550 V IEC/EN 60079-7 - IM2/M1 II 2 GD/1 GD Ex e I/II		Torque	0.4 - 0.6 N.m 3.5 - 5.3 lb.in

Mounting instructions

The connecting capacity data for one Rigid: Solid/Stranded, or one Flexible conductor (when applicable) is a mandatory information required by IEC, UL and CSA standards (Copper conductors). All other data are provided as supplementary information only. For more details, please consult our CB, UL or CSA certificates and technical datasheet available on <http://www.TE.com>

RoHS	Gost R								
------	--------	--	--	--	--	--	--	--	--

Notes

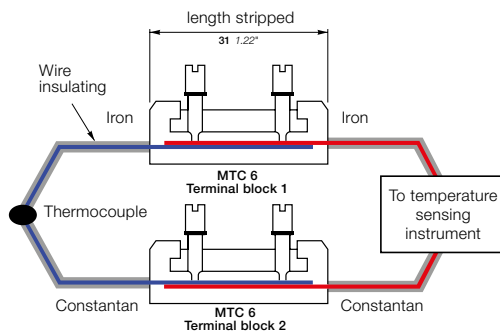


Figure 1: MTC6 with shield connector

Universal terminal block

Other thermocouple terminal blocks are available with hardware (screws, clamps and connecting bar) which match the thermocouple material being used. This requires inventory of many different terminal block types.

MTC6 terminal block adapts to all thermocouple material. This "neutral" method of connection limits the introduction of foreign materials to an insignificant level. The thermocouple wire insulation is stripped (31 mm maximum) and the bar wires are superimposed on each another. The thermocouple wires are in contact over their complete 31 mm length and tightened at two points by round tip screws (see figure 1). The screws, made of plated brass, have only a mechanical function, that of holding the wires together with a point contact. Thus, the pressure points are not relevant in the connection environment. One thermocouple lead connects through one terminal block (see figure 1). The MTC6 requires only 6 mm of space, allowing 50 terminals per foot of rail.

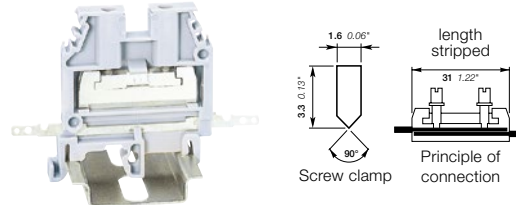


Figure 2

Thermocouple shield wire connector bar

The MTC6 can be field or factory equipped with a shield connector bar (see figure 2). This bar, made of treated brass, fits in the lower part of the terminal block. It ensures the continuity of the thermocouple wire shield through the terminal block or to the ground with no additional spacing.

Accessories



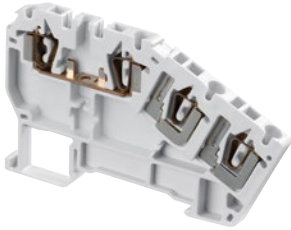
Description	Color	Type	Part Number	Pkg pce	Weight (1 pce) g
1 End sections 2.8 mm 0.110 in	Grey	FEM6	1SNA118368R1600	20	2.40
2 Shield connectors		CBM5	1SNA178745R1400	50	

Complete list of accessories is indicated in the terminal block datasheet. Some accessories such as jumper bars may modify the terminal block's ratings: complete information in the accessories catalogue pages.

Technical data valid for copper conductors only.

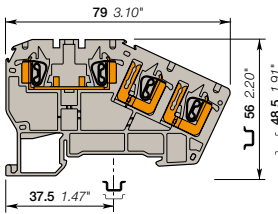
D2.5/5.C3.L spring terminal blocks

Sensors / Actuators - 5 mm 0.197 in spacing

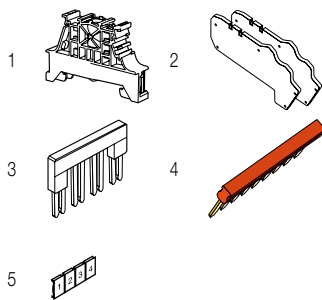


1SNK162109P0014

D2.5/5.C3.L



5 mm 0.197 in spacing



Description

- Save spacing with 3 decks terminal block, adapted for sensor/actuator in just 5 mm 0.197 in spacing,
- Easy to access thanks to the front wiring entry,
- Clamping contact pressure non dependent on the operator and automatic creeping compensation.

Ordering details

Description	Color	Type	Part Number	Pkg pce	Weight (1 pce) g
Sensor 3 wires	Grey	D2.5/5.C3.L	1SNA290350R2100	50	11.00

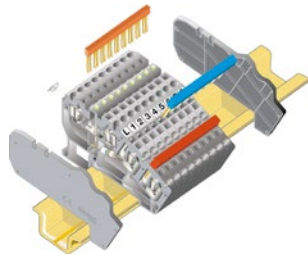
Main technical data

		IEC	UL	CSA	Mounting instructions	
1 conductor per clamp	Rigid: Solid/Stranded	0.14-1.5 mm ²		24-16 AWG	Rail	TH 35-7.5, TH 35-15
	Flexible without ferrule	0.14-1.5 mm ²			Wire stripping length	9.5 mm 0.37 in
	Flexible with non insulated ferrule				Tool	Flat screwdriver Ø 3.5 mm Ø 0.138 in
	Flexible with insulated ferrule	0.5-1 mm ²				
	Gauge	A1				
Rated current / Rated cross section		17.5 A / 1.5 mm ²		10 A / 16 AWG		
Rated short-time withstand current (1s)		180 A				
Rated voltage		300 V		300 V		
Impulse withstand voltage		4000 V				
Protection		IP20	NEMA 1			

The connecting capacity data for one Rigid: Solid/Stranded, or one Flexible conductor (when applicable) is a mandatory information required by IEC, UL and CSA standards (Copper conductors). All other data are provided as supplementary information only. For more details, please consult our CB, UL or CSA certificates and technical datasheet available on <http://www.TE.com>

RoHS	CSA	Gost R			
------	-----	--------	--	--	--

Notes



To obtain finger safety (IP20) of a terminal block assembly with comb type jumper bar, it is necessary to put one end section on each side of the terminal block assembly.

Accessories

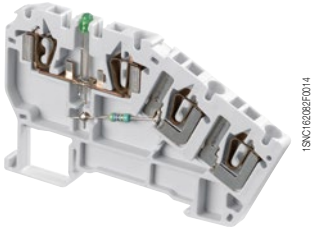
Description	Color	Type	Part Number	Pkg pce	Weight (1 pce) g	
1 End stops	Dark grey	BAZ1	1SNK900002R0000	50	5.30	
		BAM4	1SNK900001R0000	50	14.00	
2 End section kits	Grey	FED5.C3.L	1SNA290358R2500	20	10.00	
3 Jumper bars	Orange	2 poles	BJDL5-2	1SNA291102R2300	50	1.00
		3 poles	BJDL5-3	1SNA291103R2400	50	0.70
		4 poles	BJDL5-4	1SNA291104R2500	50	0.80
		5 poles	BJDL5-5	1SNA291105R2600	20	0.90
		10 poles	BJDL5-10	1SNA291110R2600	20	1.20
4 Lateral jumper bars 34 poles	Blue	PC5.34	1SNA290365R1400	10	18.00	
	Red		1SNA290366R1500	10	18.00	
	Green-yellow		1SNA290367R1600	10	18.00	
5 Terminal block markers	White	RC55	1SNA230000R1200	1	2.90	

Complete list of accessories is indicated in the terminal block datasheet. Some accessories such as jumper bars may modify the terminal block's ratings: complete information in the accessories catalogue pages.

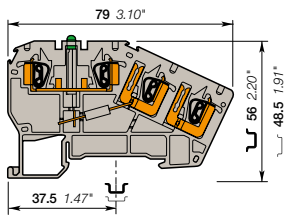
Technical data valid for copper conductors only.

D2.5/5.C3.L spring terminal blocks

Sensors / Actuators - 5 mm 0.197 in spacing



D2.5/5.C3.L



5 mm 0.197 in spacing

Description

- Save spacing with 3 decks terminal block, adapted for sensor/actuator in just 5 mm 0.197 in spacing,
- Easy to access thanks to the front wiring entry,
- Clamping contact pressure non dependent on the operator and automatic creeping compensation,
- Quickly identify the circuit status thanks to the indicator.

Ordering details

Description	Color	Type	Part Number	Pkg pce	Weight (1 pce) g
Sensor	Grey	D2.5/5.C3.L.L	1SNA290352R1700	50	11.00

Main technical data

		IEC	UL	CSA
1 conductor per clamp	Rigid: Solid/Stranded	0.14-1.5 mm ²		24-16 AWG
	Flexible without ferrule	0.14-1.5 mm ²		
	Flexible with non insulated ferrule			
	Flexible with insulated ferrule	0.5-1 mm ²		
	Gauge	A1		
Rated current / Rated cross section		17.5 A / 1.5 mm ²		10 A / 16 AWG
Rated short-time withstand current (1s)		180 A		
Rated voltage		300 V		300 V
Impulse withstand voltage		4000 V		
Protection		IP20	NEMA 1	

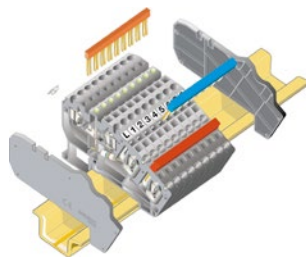
Mounting instructions

Rail		TH 35-7.5, TH 35-15
Wire stripping length		9.5 mm 0.37 in
Tool		Flat screwdriver Ø 3.5 mm Ø 0.138 in

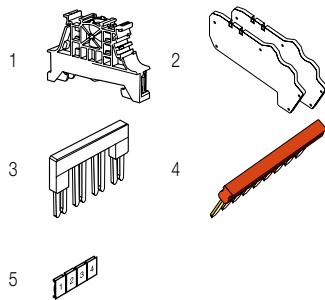
The connecting capacity data for one Rigid: Solid/Stranded, or one Flexible conductor (when applicable) is a mandatory information required by IEC, UL and CSA standards (Copper conductors). All other data are provided as supplementary information only. For more details, please consult our CB, UL or CSA certificates and technical datasheet available on <http://www.TE.com>

--	--	--	--	--	--	--	--	--	--

Notes



To obtain finger safety (IP20) of a terminal block assembly with comb type jumper bar, it is necessary to put one end section on each side of the terminal block assembly.



Accessories

Description	Color	Type	Part Number	Pkg pce	Weight (1 pce) g	
1 End stops	Dark grey	BAZ1	1SNK900002R0000	50	5.30	
		BAM4	1SNK900001R0000	50	14.00	
2 End section kits	Grey	FED5.C3.L	1SNA290358R2500	20	10.00	
3 Jumper bars	Orange	2 poles	1SNA291102R2300	50	1.00	
		3 poles	BJDL5-3	1SNA291103R2400	50	0.70
		4 poles	BJDL5-4	1SNA291104R2500	50	0.80
		5 poles	BJDL5-5	1SNA291105R2600	20	0.90
		10 poles	BJDL5-10	1SNA291110R2600	20	1.20
		34 poles	PC5.34	1SNA290365R1400	10	18.00
4 Lateral jumper bars	Blue		1SNA290366R1500	10	18.00	
	Red		1SNA290367R1600	10	18.00	
	Green-yellow		1SNA290367R1600	10	18.00	
5 Terminal block markers	White	RC55	1SNA230000R1200	1	2.90	

Complete list of accessories is indicated in the terminal block datasheet. Some accessories such as jumper bars may modify the terminal block's ratings: complete information in the accessories catalogue pages.

Technical data valid for copper conductors only.

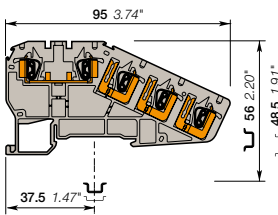
D2.5/5.C4.L spring terminal blocks

Sensors / Actuators - 5 mm 0.197 in spacing



1SNK162066R014

D2.5/5.C4.L



5 mm 0.197 in spacing

Description

- Save spacing with 4 decks terminal block, adapted for sensor/actuator in just 5 mm 0.197 in spacing,
- Easy to access thanks to the front wiring entry,
- Clamping contact pressure non dependent on the operator and automatic creeping compensation.

Ordering details

Description	Color	Type	Part Number	Pkg pce	Weight (1 pce) g
Sensor 4 wires sensor	Grey	D2.5/5.C4.L	1SNA290354R1100	50	13.00

Main technical data

		IEC	UL	CSA
1 conductor per clamp	Rigid: Solid/Stranded	0.14-1.5 mm ²		24-16 AWG
	Flexible without ferrule	0.14-1.5 mm ²		
	Flexible with non insulated ferrule			
	Flexible with insulated ferrule	0.5-1 mm ²		
	Gauge	A1		
Rated current / Rated cross section		17.5 A / 1.5 mm ²		10 A / 16 AWG
Rated short-time withstand current (1s)		180 A		
Rated voltage		300 V		300 V
Impulse withstand voltage		4000 V		
Protection		IP20	NEMA 1	

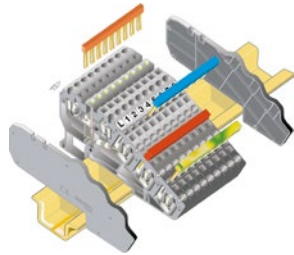
Mounting instructions

Rail		TH 35-7.5, TH 35-15
Wire stripping length		9.5 mm 0.37 in
Tool		Flat screwdriver Ø 3.5 mm Ø 0.138 in

The connecting capacity data for one Rigid: Solid/Stranded, or one Flexible conductor (when applicable) is a mandatory information required by IEC, UL and CSA standards (Copper conductors). All other data are provided as supplementary information only. For more details, please consult our CB, UL or CSA certificates and technical datasheet available on <http://www.TE.com>

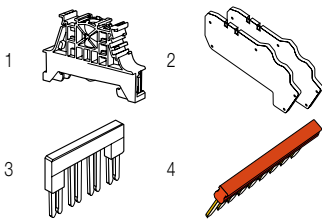
RoHS	CSA	Gost R
------	-----	--------

Notes



To obtain finger safety (IP20) of a terminal block assembly with comb type jumper bar, it is necessary to put one end section on each side of the terminal block assembly.

Accessories



Description	Color	Type	Part Number	Pkg pce	Weight (1 pce) g	
1 End stops	Dark grey	BAZ1	1SNK900002R0000	50	5.30	
		BAM4	1SNK900001R0000	50	14.00	
2 End section kits	Grey	FED5.C4.L	1SNA290360R2300	20	10.00	
3 Jumper bars	Orange	2 poles	BJDL5-2	1SNA291102R2300	50	1.00
		3 poles	BJDL5-3	1SNA291103R2400	50	0.70
		4 poles	BJDL5-4	1SNA291104R2500	50	0.80
		5 poles	BJDL5-5	1SNA291105R2600	20	0.90
		10 poles	BJDL5-10	1SNA291110R2600	20	1.20
4 Lateral jumper bars 34 poles	Blue	PC5.34	1SNA290365R1400	10	18.00	
	Red		1SNA290366R1500	10	18.00	
	Green-yellow		1SNA290367R1600	10	18.00	
5 Terminal block markers	White	RC55	1SNA230000R1200	1	2.90	

Complete list of accessories is indicated in the terminal block datasheet.

Some accessories such as jumper bars may modify the terminal block's ratings: complete information in the accessories catalogue pages.

Technical data valid for copper conductors only.

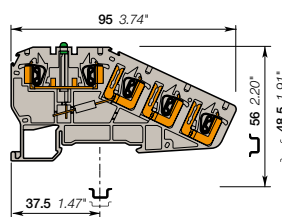
D2.5/5.C4.L spring terminal blocks

Sensors / Actuators - 5 mm 0.197 in spacing



1SNK162081F0014

D2.5/5.C4.L



5 mm 0.197 in spacing

Description

- Save spacing with 4 decks terminal block, adapted for sensor/actuator in just 5 mm 0.197 in spacing,
- Easy to access thanks to the front wiring entry,
- Clamping contact pressure non dependent on the operator and automatic creeping compensation,
- Quickly identify the circuit status thanks to the indicator.

Ordering details

Description	Color	Type	Part Number	Pkg pce	Weight (1 pce) g
Sensor 4 wires with bidirectional green LED 24 V DC	Grey	D2.5/5.C4.L.L	1SNA290356R1300	50	13.00

Main technical data

		IEC	UL	CSA
1 conductor per clamp	Rigid: Solid/Stranded	0.14-1.5 mm²		24-16 AWG
	Flexible without ferrule	0.14-1.5 mm²		
	Flexible with non insulated ferrule			
	Flexible with insulated ferrule	0.5-1 mm²		
	Gauge	A1		
Rated current / Rated cross section		17.5 A / 1.5 mm²		10 A / 16 AWG
Rated short-time withstand current (1s)		180 A		
Rated voltage		300 V		300 V
Impulse withstand voltage		4000 V		
Protection		IP20	NEMA 1	

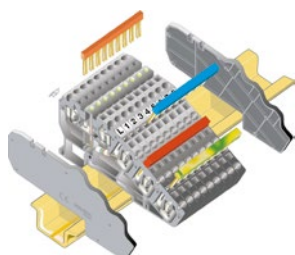
Mounting instructions

Rail		TH 35-7.5, TH 35-15
Wire stripping length		9.5 mm 0.37 in
Tool		Flat screwdriver Ø 3.5 mm Ø 0.138 in

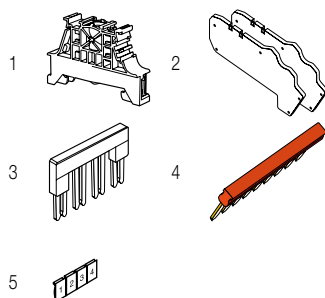
The connecting capacity data for one Rigid: Solid/Stranded, or one Flexible conductor (when applicable) is a mandatory information required by IEC, UL and CSA standards (Copper conductors). All other data are provided as supplementary information only. For more details, please consult our CB, UL or CSA certificates and technical datasheet available on <http://www.TE.com>

--	--	--	--	--	--	--	--	--	--

Notes



To obtain finger safety (IP20) of a terminal block assembly with comb type jumper bar, it is necessary to put one end section on each side of the terminal block assembly.



Accessories

Description	Color	Type	Part Number	Pkg pce	Weight (1 pce) g	
1 End stops		BAZ1	1SNK900002R0000	50	5.30	
		BAM4	1SNK900001R0000	50	14.00	
2 End section kits	Grey	FED5.C4.L	1SNA290360R2300	20	10.00	
3 Jumper bars	Orange	2 poles 24 A	BJDL5-2	1SNA291102R2300	50	1.00
		3 poles	BJDL5-3	1SNA291103R2400	50	0.70
		4 poles	BJDL5-4	1SNA291104R2500	50	0.80
		5 poles	BJDL5-5	1SNA291105R2600	20	0.90
		10 poles	BJDL5-10	1SNA291110R2600	20	1.20
4 Lateral jumper bars 34 poles	Blue	PC5.34	1SNA290365R1400	10	18.00	
	Red		1SNA290366R1500	10	18.00	
	Green-yellow		1SNA290367R1600	10	18.00	
5 Terminal block markers Blank card	White	RC55	1SNA230000R1200	1	2.90	

Complete list of accessories is indicated in the terminal block datasheet.

Some accessories such as jumper bars may modify the terminal block's ratings: complete information in the accessories catalogue pages.

Technical data valid for copper conductors only.

D1/5.C3.ADO IDC terminal blocks

Sensors / Actuators ADO-ADO - 5 mm 0.197 in spacing



Description

- Save spacing with 3 decks terminal block, adapted for sensor/actuator in just 5 mm 0.197 in spacing,
- With the TE Connectivity ADO System®, experience the fastest and most reliable connection on the market,
- Designed for control applications exposed to severe constrains (vibrations, shocks, corrosion etc.),
- Up to 2 wires on the upper deck.

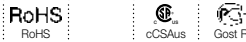
Ordering details

Description	Color	Type	Part Number	Pkg pce	Weight (1 pce) g
Sensor For 3 wire sensor	Grey	D1/5.C3.ADO	1SNA399689R1300	50	9.00

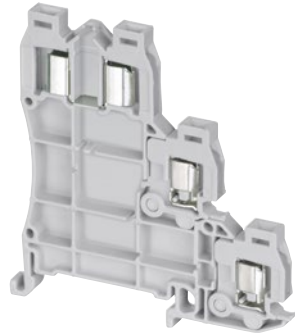
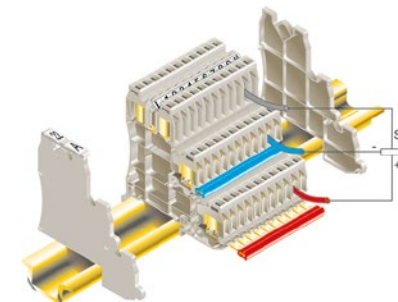
Main technical data

		IEC	UL	CSA	Mounting instructions	
ADO	Rigid: Solid/Stranded Flexible without ferrule	0.2-1 mm² 0.22-1 mm²		24-20 AWG	Rail	TH 35-7.5, TH 35-15
Screw clamp	Rigid: Solid/Stranded Flexible without ferrule Flexible with insulated ferrule Gauge				Wire stripping length	
Rated current / Rated cross section		13.5 A / 1 mm²		12 A / 20 AWG	Tool	
Rated short-time withstand current (1s)		120 A			Torque	
Rated voltage		250 V		600 V		
Impulse withstand voltage		8000 V				
Protection		IP20	NEMA 1			

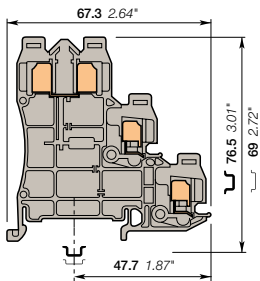
The connecting capacity data for one Rigid: Solid/Stranded, or one Flexible conductor (when applicable) is a mandatory information required by IEC, UL and CSA standards (Copper conductors). All other data are provided as supplementary information only. For more details, please consult our CB, UL or CSA certificates and technical datasheet available on <http://www.TE.com>



Notes



D1/5.C3.ADO



5 mm 0.197 in spacing

Accessories

Description	Color	Type	Part Number	Pkg pce	Weight (1 pce) g
1 End stops		Dark grey	BAM4	50	14.00
			BAZ1	50	5.30
2 End section kits	Grey	FED5.C3.ADO	1SNA399678R2700	20	10.00
3 Lateral jumper bars 10 poles	Red	PC52.10	1SNA399683R0500	10	5.00
	Blue		1SNA399684R0600	10	5.00
	Green-yellow		1SNA399685R0700	10	5.00
	Red	PC52.66	1SNA399707R1500	5	30.00
	Blue		1SNA399708R2600	5	30.00
	Green-yellow		1SNA399709R2700	5	30.00
4 Tools		Semi automatic tool	OUPAD	1	205.00
		Hand tool	OUMAD	1	29.00
5 Terminal block markers	White	Blank card	RC55	1	2.90

Complete list of accessories is indicated in the terminal block datasheet.

Some accessories such as jumper bars may modify the terminal block's ratings: complete information in the accessories catalogue pages.

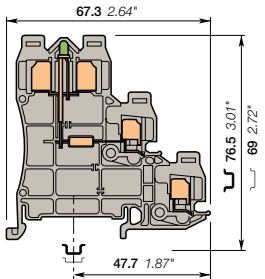
Technical data valid for copper conductors only.

D1/5.C3.ADO IDC terminal blocks

Sensors / Actuators ADO-ADO - 5 mm 0.197 in spacing



D1/5.C3.ADO



5 mm 0.197 in spacing

Description

- Save spacing with 3 decks terminal block, adapted for sensor/actuator in just 5 mm 0.197 in spacing,
- With the TE Connectivity ADO System®, experience the fastest and most reliable connection on the market,
- Designed for control applications exposed to severe constrains (vibrations, shocks, corrosion etc.),
- Up to 2 wires on the upper deck.

Ordering details

Description	Color	Type	Part Number	Pkg pce	Weight (1 pce) g
Sensor For 3 wire sensor with green bidirectional LED 24 VDC	Grey <input type="checkbox"/>	D1/5.C3.ADO.L	1SNA399690R1000	50	10.00

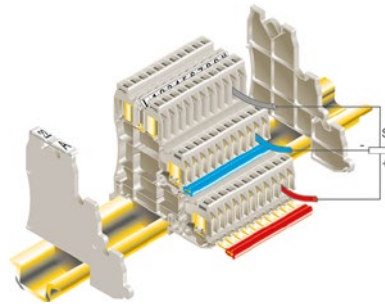
Main technical data

	IEC	UL	CSA	Mounting instructions
ADO	Rigid: Solid/Stranded Flexible without ferrule Flexible with insulated ferrule	0.2-1 mm² 0.22-1 mm²	24-20 AWG	Rail TH 35-7.5, TH 35-15 Wire stripping length
Screw clamp	Rigid: Solid/Stranded Flexible without ferrule Flexible with insulated ferrule			Tool
Rated current / Rated cross section	13.5 A / 1 mm²		12 A / 20 AWG	Torque
Rated short-time withstand current (1s)	120 A			
Rated voltage	250 V		600 V	
Impulse withstand voltage	8000 V			
Protection	IP20	NEMA 1		

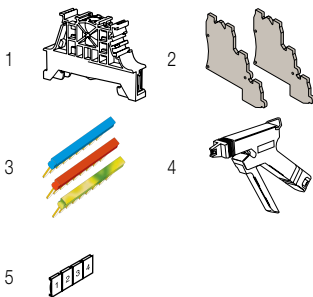
The connecting capacity data for one Rigid: Solid/Stranded, or one Flexible conductor (when applicable) is a mandatory information required by IEC, UL and CSA standards (Copper conductors). All other data are provided as supplementary information only. For more details, please consult our CB, UL or CSA certificates and technical datasheet available on <http://www.TE.com>



Notes



Accessories



Description	Color	Type	Part Number	Pkg pce	Weight (1 pce) g
1 End stops 10 mm 0.394 in	Dark grey <input type="checkbox"/>	BAM4	1SNK900001R0000	50	14.00
5.2 mm 0.205 in		BAZ1	1SNK900002R0000	50	5.30
2 End section kits	Grey <input type="checkbox"/>	FED5.C3.ADO	1SNA399678R2700	20	10.00
3 Lateral jumper bars 10 poles	Red <input type="checkbox"/>	PC52.10	1SNA399683R0500	10	5.00
	Blue <input type="checkbox"/>		1SNA399684R0600	10	5.00
	Green-yellow <input type="checkbox"/>		1SNA399685R0700	10	5.00
66 poles	Red <input type="checkbox"/>	PC52.66	1SNA399707R1500	5	30.00
	Blue <input type="checkbox"/>		1SNA399708R2600	5	30.00
	Green-yellow <input type="checkbox"/>		1SNA399709R2700	5	30.00
4 Tools		OUPAD	1SNA178944R0400	1	205.00
Semi automatic tool		OUMAD	1SNA179466R0600	1	29.00
Hand tool					
5 Terminal block markers Blank card	White <input type="checkbox"/>	RC55	1SNA230000R1200	1	2.90

Complete list of accessories is indicated in the terminal block datasheet.

Some accessories such as jumper bars may modify the terminal block's ratings: complete information in the accessories catalogue pages.

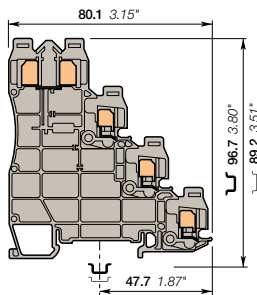
Technical data valid for copper conductors only.

D1/5.C4.ADO IDC terminal blocks

Sensors / Actuators ADO-ADO - 5 mm 0.197 in spacing



D1/5.C4.ADO



5 mm 0.197 in spacing

Description

- Save spacing with 4 decks terminal block, adapted for sensor/actuator in just 5 mm 0.197 in spacing,
- With the TE Connectivity ADO System®, experience the fastest and most reliable connection on the market,
- Designed for control applications exposed to severe constrains (vibrations, shocks, corrosion etc.),
- Up to 2 wires on the upper deck.

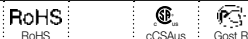
Ordering details

Description	Color	Type	Part Number	Pkg pce	Weight (1 pce) g
Sensor For 4 wire sensor	Grey <input type="checkbox"/>	D1/5.C4.ADO	1SNA399692R0600	50	

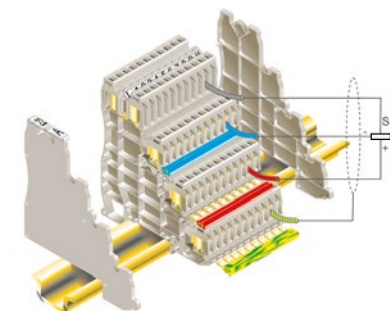
Main technical data

		IEC	UL	CSA	Mounting instructions	
ADO	Rigid: Solid/Stranded	0.2-1 mm²		24-20 AWG	Rail	TH 35-7.5, TH 35-15
	Flexible without ferrule	0.22-1 mm²			Wire stripping length	
Screw clamp	Rigid: Solid/Stranded				Tool	
	Flexible without ferrule					
	Flexible with insulated ferrule				Torque	
	Gauge					
Rated current / Rated cross section		13.5 A / 1 mm²		12 A / 20 AWG		
Rated short-time withstand current (1s)		120 A				
Rated voltage		250 V		600 V		
Impulse withstand voltage		8000 V				
Protection		IP20	NEMA 1			

The connecting capacity data for one Rigid: Solid/Stranded, or one Flexible conductor (when applicable) is a mandatory information required by IEC, UL and CSA standards (Copper conductors). All other data are provided as supplementary information only. For more details, please consult our CB, UL or CSA certificates and technical datasheet available on <http://www.TE.com>



Notes



Accessories

Description	Color	Type	Part Number	Pkg pce	Weight (1 pce) g	
1 End stops 10 mm 0.394 in	Dark grey <input type="checkbox"/>	BAZH1	1SNK900102R0000	20	24.00	
2 End section kits	Grey <input type="checkbox"/>	FED5.C4.ADO	1SNA399679R2000	10	10.00	
3 Lateral jumper bars 10 poles	Red <input type="checkbox"/>	PC52.10	1SNA399683R0500	10	5.00	
	Blue <input type="checkbox"/>		1SNA399684R0600	10	5.00	
	Green-yellow <input type="checkbox"/>		1SNA399685R0700	10	5.00	
	Red <input type="checkbox"/>	PC52.66	1SNA399707R1500	5	30.00	
	Blue <input type="checkbox"/>		1SNA399708R2600	5	30.00	
4 Tools	Green-yellow <input type="checkbox"/>		1SNA399709R2700	5	30.00	
		Semi automatic tool	OUPAD	1SNA178944R0400	1	205.00
		Hand tool	OUMAD	1SNA179466R0600	1	29.00
5 Terminal block markers Blank card	White <input type="checkbox"/>	RC55	1SNA230000R1200	1	2.90	

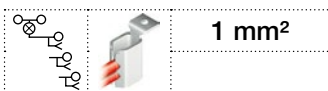
Complete list of accessories is indicated in the terminal block datasheet.

Some accessories such as jumper bars may modify the terminal block's ratings: complete information in the accessories catalogue pages.

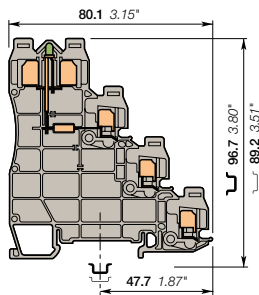
Technical data valid for copper conductors only.

D1/5.C4.ADO IDC terminal blocks

Sensors / Actuators ADO-ADO - 5 mm 0.197 in spacing



D1/5.C4.ADO



5 mm 0.197 in spacing

Description

- Save spacing with 4 decks terminal block, adapted for sensor/actuator in just 5 mm 0.197 in spacing,
- With the TE Connectivity ADO System®, experience the fastest and most reliable connection on the market,
- Designed for control applications exposed to severe constrains (vibrations, shocks, corrosion etc.),
- Up to 2 wires on the upper deck.

Ordering details

Description	Color	Type	Part Number	Pkg pce	Weight (1 pce) g
Sensor For 4 wire sensor with green bidirectional LED 24 VDC	Grey <input type="checkbox"/>	D1/5.C4.ADO.L	1SNA399693R0700	50	

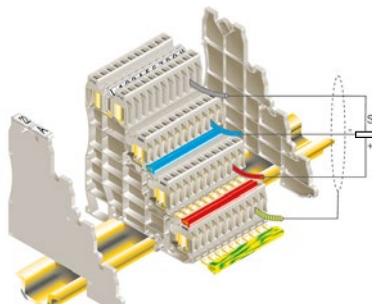
Main technical data

	IEC	UL	CSA	Mounting instructions
ADO	Rigid: Solid/Stranded Flexible without ferrule Flexible with ferrule	0.2-1 mm² 0.22-1 mm²		Rail TH 35-7.5, TH 35-15 Wire stripping length
Screw clamp	Rigid: Solid/Stranded Flexible without ferrule Flexible with insulated ferrule			Tool
Rated current / Rated cross section		13.5 A / 1 mm²		Torque
Rated short-time withstand current (1s)		120 A		
Rated voltage		250 V		
Impulse withstand voltage		8000 V		
Protection		IP20	NEMA 1	

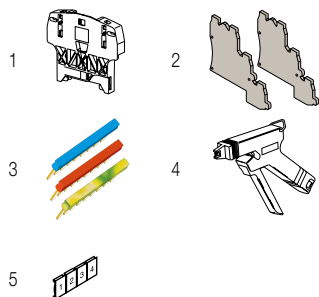
The connecting capacity data for one Rigid: Solid/Stranded, or one Flexible conductor (when applicable) is a mandatory information required by IEC, UL and CSA standards (Copper conductors). All other data are provided as supplementary information only. For more details, please consult our CB, UL or CSA certificates and technical datasheet available on <http://www.TE.com>

<input type="checkbox"/> RoHS	<input type="checkbox"/> RoHS	<input type="checkbox"/> Gost R							
-------------------------------	-------------------------------	---------------------------------	--	--	--	--	--	--	--

Notes



Accessories



Description	Color	Type	Part Number	Pkg pce	Weight (1 pce) g	
1 End stops 10 mm 0.394 in	Dark grey <input type="checkbox"/>	BAZH1	1SNK900102R0000	20	24.00	
2 End section kits	Grey <input type="checkbox"/>	FED5.C4.ADO	1SNA399679R2000	10	10.00	
3 Lateral jumper bars 10 poles 66 poles	Red <input type="checkbox"/>	PC52.10	1SNA399683R0500	10	5.00	
	Blue <input type="checkbox"/>		1SNA399684R0600	10	5.00	
	Green-yellow <input type="checkbox"/>		1SNA399685R0700	10	5.00	
	Red <input type="checkbox"/>	PC52.66	1SNA399707R1500	5	30.00	
	Blue <input type="checkbox"/>		1SNA399708R2600	5	30.00	
4 Tools	Green-yellow <input type="checkbox"/>		1SNA399709R2700	5	30.00	
		Semi automatic tool	OUPAD	1SNA178944R0400	1	205.00
5 Terminal block markers		Hand tool	OUMAD	1SNA179466R0600	1	29.00
		Blank card	White <input type="checkbox"/> RC55	1SNA230000R1200	1	2.90

Complete list of accessories is indicated in the terminal block datasheet.

Some accessories such as jumper bars may modify the terminal block's ratings: complete information in the accessories catalogue pages.

Technical data valid for copper conductors only.

te.com

© 2022 TE Connectivity Ltd. family of companies. All Rights Reserved.

ENTRELEC, TE Connectivity, TE connectivity (logo) and Every Connection Counts are trademarks. All other logos, products and/or company names referred to herein might be trademarks of their respective owners.

While TE has made every reasonable effort to ensure the accuracy of the information in this brochure, TE does not guarantee that it is error-free, nor does TE make any other representation, warranty or guarantee that the information is accurate, correct, reliable or current. TE reserves the right to make any changes to the information contained herein without prior notice. TE Connectivity assumes only those obligations set forth in the terms and conditions for this product and shall in no event be liable for any incidental, indirect, or consequential damages arising out of the sale, resale, use, or misapplication of the product. TE expressly disclaims any implied warranties with respect to the information contained herein, including, but not limited to, implied warranties of merchantability or fitness for a particular purpose. Dimensions, specifications and/or information contained herein are for reference purposes only and are subject to change without notice. Consult TE for the latest dimensions, specifications and/or information. Users of TE Connectivity products must make their own assessment as to whether the respective product is suitable for the respective desired application.

ENTRELEC / SENSOR/ACTUATOR TERMINAL BLOCKS / BROCHURE/ EN

12/22

BROCHURE

TE Connectivity
3, rue Jean Perrin
69687 Chassieu cedex
France
Tel: +33 481923100