

MECHANICAL SHEAR BOLT TERMINAL LUGS (BLMC)

FOR CONNECTION TO MEDIUM VOLTAGE SWITCHGEAR WITH SOLID PINS

KEY FEATURES

- Wide application range covered with only two lug sizes to simplify your stocking requirements
- Can be used with almost every type of conductor and material
- Torque-controlled shear-head bolts guarantee an excellent electrical contact
- Easy installation with standard tool
- Pre-engineered design for perfect fit on medium voltage switchgear with solid pins including Magnefix switchgear

Our Mechanical Shear Bolt Terminal Lugs (BLMC) for connection to switchgear with solid pins are designed for use in medium voltage applications. With only two lug sizes, you can cover conductor sizes from 16 to 240 mm², which simplifies your stocking requirements. They can be used for connection to switchgear copper pin diameters of 12, 14 or 16mm.

Lug bodies and inserts are made of a high tensile tin-plated aluminium alloy. The internal surfaces of the conductor's holes and inserts are grooved at the manufacturing stage to provide excellent electrical contact performance.

All aluminium alloy contact bolts have shear heads; these bolts are not removable once their heads have been sheared off.

The connection to the solid pin of the switchgear is made by tightening the V shaped palm of the lug to the solid pin using the stainless steel retaining ring and screw. The retaining ring, while free to rotate by +/-45°, is designed such that it cannot fall off during installation.

The retaining ring screws are fitted with regular bolts and are thus removable. This feature provides the flexibility to disconnect the cable lug from the switchgear if needed.

The BLMC is designed to meet IEC 61238-1 class A requirements.

Customers can count on consistent, high quality products, driven by TE's proven innovation and backed by our extraordinary customer support.

MECHANICAL SHEAR BOLT TERMINAL LUGS (BLMC)



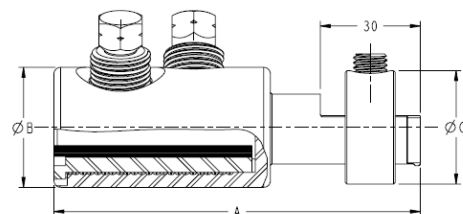
PRODUCT SELECTION INFORMATION

Application range - Conductor type

Description		Al circular stranded	Al circular solid	Al sector stranded	Al sector solid	Cu circular stranded	Cu circular solid	Cu sector stranded
BLMC-16/70S-95R-MFX	Cross-sectional range (mm ²)	25-95	16-95	25-70 (95 with rounding)	50-95	10-95	10-50	25-70 (95 with rounding)
	Conductor diameter (mm)	5.6-12.5	4.1-11.0	N/A	N/A	3.6-12.5	3.6-8.0	N/A
BLMC-95/240-MFX	Cross-sectional range (mm ²)	95-240	95-240	95-240	95-240	95-240	N/A	95-240
	Conductor diameter (mm)	11.0-19.2	10.5-18.0	N/A	N/A	11.0-19.2	N/A	N/A

DIMENSIONS AND CHARACTERISTICS OF LUGS

Description	Length A (mm)	Cable Connection Side			Solid Pin connection Side		
		Outer diameter ϕB (mm)	Contact Bolts Quantity	Head Size AF (mm)	Outer diameter ϕC (mm)	Screw Quantity	Head Size AF (mm)
BLMC-16/70S-95R-MFX	80	24	1	13	34	1	5 (Inner Hexagon)
BLMC-95/240-MFX	110	36	2	13	34	1	5 (Inner Hexagon)



[te.com/energy](https://www.te.com/energy)

© 2019 TE Connectivity. All Rights Reserved. EPP-3362-DDS-6/19-BLMC-for-solid-pin-Switchgear-TE

TE Connectivity and TE connectivity (logo) are trademarks. Other logos, product and/or company names might be trademarks of their respective owners. While TE has made every reasonable effort to ensure the accuracy of the information in this brochure, TE does not guarantee that it is error-free, nor does TE make any other representation, warranty or guarantee that the information is accurate, correct, reliable or current. TE reserves the right to make any adjustments to the information contained herein at any time without notice. TE expressly disclaims all implied warranties regarding the information contained herein, including, but not limited to, any implied warranties of merchantability or fitness for a particular purpose. The dimensions in this catalog are for reference purposes only and are subject to change without notice. Specifications are subject to change without notice. Consult TE for the latest dimensions and design specifications.

FOR MORE INFORMATION: TE Technical Support Centers

USA:	+ 1 800 327 6996
Canada:	+ 1 (905) 475-6222
Mexico:	+ 52 (0) 55-1106-0800
Latin/S. America:	+ 54 (0) 11-4733-2200
France:	+ 33 380 583 200
UK:	+ 44 0870 870 7500
Germany:	+ 49 896 089 903
Spain:	+ 34 916 630 400
Italy:	+ 39 333 250 0915
Benelux:	+ 32 16 508 695
Russia:	+ 7 495-790 790 2-200
China:	+ 86 (0) 400-820-6015