

UTILUX LONG PALM COPPER CRIMP LUGS CG LP TYPE

KEY FEATURES

- Solder sealed (refer table)
- Long barrel length for effective heat shrink sealing
- No Inspection window
- Sealed lugs are impervious to air at 140kpa min
- Uses same crimp tools as standard copper lugs

Utilux is a brand that has built an enviable reputation for high quality, reliable electrical connectors. For over 90 years, this dynamic Australian brand has been a leader in the field of interconnection systems.

Our aim is to provide the best possible products and services to keep our customers at the cutting edge of industry standards - internationally.

You can be sure that Utilux branded products are fabricated from the finest materials and produced to exacting tolerances. They represent the latest technology and the best design for the tasks they are required to perform.

Utilux is a leading brand of electrical connectors sold to original equipment manufacturers and electrical distribution companies throughout Australia, New Zealand and Asia. A comprehensive range, the most up to date production technology and the highest quality control standards ensure that there are Utilux connectors, of optimum reliability and durability, for all major power distribution applications.

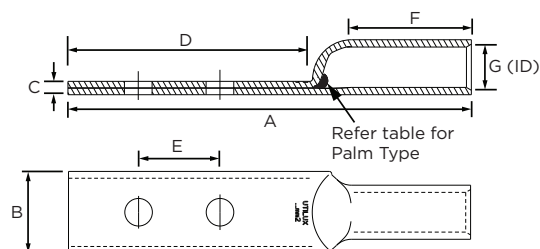
As part of the worlds largest electrical connector company, TE Connectivity, the development of products is an ongoing commitment. It is done on a global basis, utilising the talents of many people throughout the organisation to ensure a global product for a local market.

Customers can count on consistent, high quality products, driven by TE's proven innovation and backed by our extraordinary customer support.

UTILUX LONG PALM COPPER CRIMP LUGS



Utilux has engineered the correct combination of material thickness and crimp die selection to ensure that the optimum compression ratios are achieved when crimping. Annealing also ensures that connectors can be crimped without damage and electro tinning minimises corrosion. These features combined with correct termination procedures will ensure a connection that will perform for many years.



PRODUCT SELECTION INFORMATION											
Catalogue Number	Conductor Area (mm ²)	Stud Size	Dimensions (mm)							Palm Type	Crimping Die
			A	B	C	D	E	F	G		
CG10LPM6-20	10	M6	58	11.9	2	38	20	15	4.7	Unsealed	38-57CU
CG16LPM6-16	16	M6	60	13.5	1.9	35	16	21	5.5	Unsealed	38-63CU
CG25LPM10-30	25	M10	80	16.7	1.9	50	30	25	7.1	Unsealed	38-77CU
CG35LPM8-25	35	M8	75	18	2.7	47	25	23	8.4	Unsealed	38-92CU
CG70LPM12-40	70	M12	161	20.6	3.2	100	40	50	11.03	Sealed	38-115CU
CG70LPM12-30	70	M12	101	20.6	3.2	60	30	30	11.03	Sealed	38-115CU
CG70LPM12-50	70	M12	161	20.6	3.2	100	50	50	11.03	Sealed	38-115CU
CG80LPM10-31.75	80	M10	111	22.2	4	78	31.75	23.8	11.82	Unsealed	38-130CU
CG95LPM8-22	95	M8	92	25.4	4	47	22	30	13.4	Unsealed	38-142CU
CG95LPM12-30	95	M12	121	25.4	4	60	30	50	13.4	Sealed	38-142CU
CG95LPM12-30X12	95	M12	103	25.4	4	60	30	30	13.4	Sealed	38-142CU
CG95LPM12-50	95	M12	161	25.4	4	100	50	50	13.4	Sealed	38-142CU
CG120LPM10-31.75	120	M10	125.5	30	4.8	78	31.75	32.5	15.5	Sealed	38-165CU
CG120LPM10-41.3	120	M10	125.5	30	4.8	78	41.3	32.5	15.5	Sealed	38-165CU
CG120LPM12-50	120	M12	170	30	4.8	100	50	45	15.5	Unsealed	38-165CU
CG120LPM12-40	120	M12	133	30	4.8	78	40	40	15.5	Sealed	38-165CU
CG120LPM12-50	120	M12	155	30	4.8	100	50	40	15.5	Sealed	38-165CU
CG150LPM10-31.75	150	M10	124	33.5	5.4	78	31.75	32.5	16.3	Unsealed	38-183CU
CG185LPM12-30	185	M12	116	33	5.7	65	30	33	18.4	Sealed	38-200CU
CG185LPM12-50	185	M12	168	36.5	5.2	100	50	50	18.4	Sealed	38-200CU
CG240LPM10-31.75	240	M10	141	40.5	7	78	31.75	44.5	21.2	Unsealed	38-231CU
CG240LPM12-50	240	M12	161	41.6	7.1	90	50	50	21.2	Sealed	38-231CU
CG300LPM12-50	300	M12	222	46	7.9	110	50	90	23.8	Sealed	40-260CU
CG400LPM12-50	400	M12	227	49.6	7.9	110	50	90	26.93	Sealed	40-281CU
CG630LPM12-50	630	M12	225	63.5	11.5	100	50	90	33.5	Sealed	40-370CU
CG630LPM16-50	630	M16	225	63.5	11.5	100	50	90	33.5	Sealed	40-370CU

te.com/energy

©2016 TE Connectivity Ltd. family of companies. All Rights Reserved. EPP-2487-DDS18-AU-2/16

Utilux, TE Connectivity and TE Connectivity (logo) are trademarks. Other logos, product and/or company names might be trademarks of their respective owners. While TE has made every reasonable effort to ensure the accuracy of the information in this brochure, TE does not guarantee that it is error-free, nor does TE make any other representation, warranty or guarantee that the information is accurate, correct, reliable or current. TE reserves the right to make any adjustments to the information contained herein at any time without notice. TE expressly disclaims all implied warranties regarding the information contained herein, including, but not limited to, any implied warranties of merchantability or fitness for a particular purpose. The dimensions in this catalog are for reference purposes only and are subject to change without notice. Specifications are subject to change without notice. Consult TE for the latest dimensions and design specifications.

FOR MORE INFORMATION:

TE Customer Support Centers

NSW/QLD/NT/ACT:	+61 (2) 9554 2695
VIC/TAS/SA:	+61 (3) 9271 5243
WA:	+61 (8) 9358 7806
New Zealand:	+64 (9) 634 4580