

UTILUX SPECIAL COPPER CRIMP LUGS CG TYPE

KEY FEATURES

- Range 0.5 - 1200mm²
- Seamless copper tube
- Electro tinned
- Cable area clearly identified on the lug
- Solder sealed (refer table)
- Sealed lugs impervious to air 140kpa min

Utilux is a brand that has built an enviable reputation for high quality, reliable electrical connectors. For over 90 years, this dynamic Australian brand has been a leader in the field of interconnection systems.

Our aim is to provide the best possible products and services to keep our customers at the cutting edge of industry standards - internationally.

You can be sure that Utilux branded products are fabricated from the finest materials and produced to exacting tolerances. They represent the latest technology and the best design for the tasks they are required to perform.

Utilux is a leading brand of electrical connectors sold to original equipment manufacturers and electrical distribution companies throughout Australia, New Zealand and Asia. A comprehensive range, the most up to date production technology and the highest quality control standards ensure that there are Utilux connectors, of optimum reliability and durability, for all major power distribution applications.

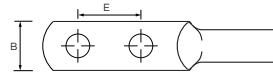
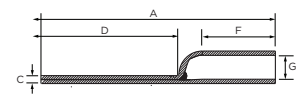
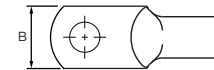
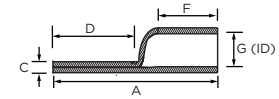
As part of the worlds largest electrical connector company, TE Connectivity, the development of products is an ongoing commitment. It is done on a global basis, utilising the talents of many people throughout the organisation to ensure a global product for a local market.

Customers can count on consistent, high quality products, driven by TE's proven innovation and backed by our extraordinary customer support.

UTILUX SPECIAL COPPER CRIMP LUGS



Utilux has engineered the correct combination of material thickness and crimp die selection to ensure that the optimum compression ratios are achieved when crimping. Annealing also ensures that connectors can be crimped without damage and electro tinning minimises corrosion. These features combined with correct termination procedures will ensure a connection that will perform for many years.

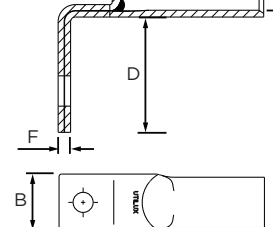
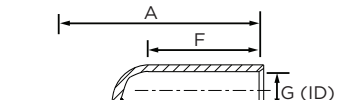


HEAVY DUTY PRODUCT SELECTION INFORMATION

Catalogue Number	Conductor Area (mm ²)	Conductor Stranding	Stud Size	Dimensions (mm)							Crimping Die	Palm Type
				A	B	C	D	E	F	G		
CG6HDM6	6	7/1.35	M6	39	12	3.4	16	-	20	3.9	38-63CU	Unsealed
CG16HDM6	16	7/1.70	M6	46	13	4.0	18	-	22	5.5	38-77CU	Unsealed
CG70FHDM10-25	70 Flex.		M10	92	25	5.5	52	25	27	12.3	38-142CU	Sealed

LONG PALM 90° BEND PRODUCT SELECTION INFORMATION

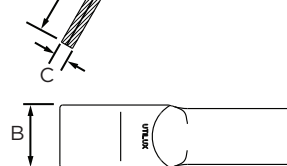
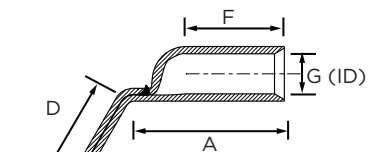
Catalogue Number	Conductor Area (mm ²)	Conductor Stranding	Stud Size	Dimensions (mm)							Crimping Die	Palm Type
				A	B	C	D	F	G			
CG50B90M12	50	19/1.78	M12	54.4	20.6	2.8	30	30	9.5	38-104CU	Sealed	
CG70B90M8	70	19/2.14	M8	38.0	20.6	3.2	19	25	11.0	38-115CU	Sealed	
CG70B90M8X05	70	19/2.14	M8	57.0	20.6	3.2	50	30	11.0	38-115CU	Sealed	
CG185B90M10	185	37/2.52	M10	59.4	36.5	5.2	50	35	18.4	38-200CU	Sealed	
CG185B90M12	185	37/2.52	M12	59.4	36.5	5.2	50	35	18.4	38-200CU	Sealed	



120° BEND PRODUCT SELECTION INFORMATION

Catalogue Number	Conductor Area (mm ²)	Conductor Stranding	Stud Size	Dimensions (mm)							Crimping Die	Palm Type
				A	B	C	D	F	G			
CG185B120MBUP	142	722/0.5	MB	55	25	7	32	40	18.4	38-260CU 38-FLAT14	Sealed	

Stud size "MB" means blank palm



te.com/energy

©2016 TE Connectivity Ltd. family of companies. All Rights Reserved. EPP-2487-DDS17-AU-2/16

Utilux, TE Connectivity and TE Connectivity (logo) are trademarks. Other logos, product and/or company names might be trademarks of their respective owners. While TE has made every reasonable effort to ensure the accuracy of the information in this brochure, TE does not guarantee that it is error-free, nor does TE make any other representation, warranty or guarantee that the information is accurate, correct, reliable or current. TE reserves the right to make any adjustments to the information contained herein at any time without notice. TE expressly disclaims all implied warranties regarding the information contained herein, including, but not limited to, any implied warranties of merchantability or fitness for a particular purpose. The dimensions in this catalog are for reference purposes only and are subject to change without notice. Specifications are subject to change without notice. Consult TE for the latest dimensions and design specifications.

FOR MORE INFORMATION:

TE Customer Support Centers

NSW/QLD/NT/ACT: +61 (2) 9554 2695
 VIC/TAS/SA: +61 (3) 9271 5243
 WA: +61 (8) 9358 7806
 New Zealand: +64 (9) 634 4580