



## UTILUX FLARED COPPER CRIMP LUGS CG FLM TYPE

### KEY FEATURES

- Specially made for flexible cables for easy insertion
- Range from 25 - 300 mm<sup>2</sup>
- Made from seamless copper tube

Utilux is a brand that has built an enviable reputation for high quality, reliable electrical connectors. For over 90 years, this dynamic Australian brand has been a leader in the field of interconnection systems.

Our aim is to provide the best possible products and services to keep our customers at the cutting edge of industry standards - internationally.

You can be sure that Utilux branded products are fabricated from the finest materials and produced to exacting tolerances. They represent the latest technology and the best design for the tasks they are required to perform.

Utilux is a leading brand of electrical connectors sold to original equipment manufacturers and electrical distribution companies throughout Australia, New Zealand and Asia. A comprehensive range, the most up to date production technology and the highest quality control standards ensure that there are Utilux connectors, of optimum reliability and durability, for all major power distribution applications.

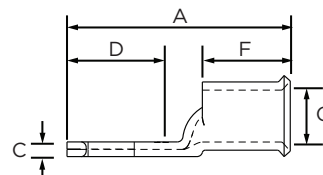
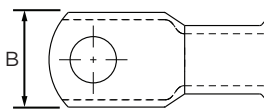
As part of the worlds largest electrical connector company, TE Connectivity, the development of products is an ongoing commitment. It is done on a global basis, utilising the talents of many people throughout the organisation to ensure a global product for a local market.

**Customers can count on consistent, high quality products, driven by TE's proven innovation and backed by our extraordinary customer support.**

## UTILUX FLARED COPPER CRIMP LUGS



The range of flared copper lugs has been designed with the barrel entry flared to enable an easy insertion of multi stranded cables (flexible cable). The range of connectors will ensure most applications for the common flexible cable sizes are covered. The flared copper lugs are made from seamless copper tube, electro tin plated and have the cable area clearly marked on the palm of the lug. The inspection window on the barrel provides a check that the cable has been fully inserted. The flared lugs can be crimped with the standard range of Utilux tooling and hexagonal dies.



PRODUCT SELECTION INFORMATION										
Catalogue Number	Cond. Area (mm <sup>2</sup> )	Conductor Stranding	Stud Size	Dimensions (mm)						Crimping Die
				A	B	C	D	F	G	
CG16FLM8	16	7/1.70	M8	39	14	2	16	20	5.5	38-63CU
CG16FLM10	16	7/1.70	M10	41	14	2	19	20	5.5	38-63CU
CG25FLM6	25	209/0.40	M6	43	17	2	19	22	7.1	38-77CU
CG25FLM8	25	209/0.40	M8	43	17	2	19	22	7.1	38-77CU
CG25FLM10	25	209/0.40	M10	43	18	2	19	22	7.1	38-77CU
CG25FLM12	25	209/0.40	M12	50	17	2	19	21	7.1	38-77CU
CG35FLM6	35	285/0.40	M6	43	18	3	19	22	8.4	38-92CU
CG35FLM8	35	285/0.40	M8	43	18	3	19	22	8.4	38-92CU
CG35FLM10	35	285/0.40	M10	43	18	3	19	22	8.4	38-92CU
CG35FLM12	35	285/0.40	M12	43	20	2	19	22	8.4	38-92CU
CG50FLM6	50	380/0.40	M6	50	21	3	27	21	9.4	38-104CU
CG50FLM8	50	380/0.40	M8	50	21	3	27	21	9.4	38-104CU
CG50FLM10	50	380/0.40	M10	50	21	3	27	21	9.4	38-104CU
CG50FLM12	50	380/0.40	M12	50	21	3	27	21	9.4	38-104CU
CG70FLM6	70	203/0.67	M6	54	21	3	27	22	11	38-115CU
CG70FLM8	70	203/0.67	M8	54	21	3	27	22	11	38-115CU
CG70FLM10	70	203/0.67	M10	54	21	3	27	22	11	38-115CU
CG70FLM12	70	203/0.67	M12	54	21	3	27	22	11	38-115CU
CG95FLM6	95	259/0.67	M6	58	25	4	27	27	13.4	38-142CU
CG95FLM8	95	259/0.67	M8	58	25	4	27	27	13.4	38-142CU
CG95FLM10	95	259/0.67	M10	58	25	4	27	27	13.4	38-142CU
CG95FLM12	95	259/0.67	M12	58	25	4	27	27	13.4	38-142CU
CG120FLM10	120	336/0.67	M10	67	30	5	32	30	15.5	38-165CU
CG120FLM12	120	336/0.67	M12	67	30	5	32	30	15.5	38-165CU
CG120FLM16	120	336/0.67	M16	67	30	5	32	30	15.5	38-165CU
CG150FLM10	150	427/0.67	M10	76	34	5	41	26	16.3	38-183CU
CG150FLM12	150	427/0.67	M12	76	34	5	41	26	16.3	38-183CU
CG150FLM16	150	427/0.67	M16	76	34	5	41	26	16.3	38-183CU
CG185FLM12	185	518/0.67	M12	80	37	5	41	30	18.4	38-200CU
CG185FLM16	185	518/0.67	M16	80	37	5	41	30	18.4	38-200CU
CG240FLM12	240	672/0.67	M12	105	41.6	7.1	42	42	21.2	38-231CU
CG240FLMB	240	672/0.67	MB	105	41.6	7.1	42	42	21.2	38-231CU
CG300FLM12	300	854/0.67	M12	109	46	7.9	42	42	23.8	38-260CU
CG300FLMB	300	854/0.67	MB	109	46	7.9	42	42	23.8	38-260CU

Stud size "MB" means blank palm.

[te.com/energy](http://te.com/energy)

©2016 TE Connectivity Ltd. family of companies. All Rights Reserved. EPP-2487-DDS3-AU-3/16

Utilux, TE Connectivity and TE Connectivity (logo) are trademarks. Other logos, product and/or company names might be trademarks of their respective owners. While TE has made every reasonable effort to ensure the accuracy of the information in this brochure, TE does not guarantee that it is error-free, nor does TE make any other representation, warranty or guarantee that the information is accurate, correct, reliable or current. TE reserves the right to make any adjustments to the information contained herein at any time without notice. TE expressly disclaims all implied warranties regarding the information contained herein, including, but not limited to, any implied warranties of merchantability or fitness for a particular purpose. The dimensions in this catalog are for reference purposes only and are subject to change without notice. Specifications are subject to change without notice. Consult TE for the latest dimensions and design specifications.

### FOR MORE INFORMATION:

#### TE Customer Support Centers

NSW/QLD/NT/ACT: +61 (2) 9554 2695  
 VIC/TAS/SA: +61 (3) 9271 5243  
 WA: +61 (8) 9358 7806  
 New Zealand: +64 (9) 634 4580