



## ELASTOMERIC INSULATING BUSHING BOOT (RCAB)

FOR TERMINATIONS UP TO 24KV

### KEY FEATURES

- Tool free application
- High-performance insulation material
- Excellent track and erosion resistance
- Removable and reinstallable
- Quick and easy installation
- Unlimited shelf life
- Connection can be energized directly after installation

TE Connectivity (TE)'s Raychem elastomeric insulating boots are moulded parts, that fit over the connection between the cable lug and the inline equipment bushing, to provide phase-to-phase and phase-to-ground insulation. They are used in switchgear and transformer cable boxes, where air clearances are insufficient for normal operation, and they also protect against flashover caused by rodents or high humidity.

The non-tracking elastomeric housing has excellent erosion resistance, dielectric properties and environmental resistance, giving superb performance in areas of high humidity and electrical stress.

TE's Raychem RCAB boots can be used with all TE's Raychem heat-shrink terminations.

RCAB boots are quick and easy to install and eliminate taping of the bushing or termination. The boot can be removed and reinstalled easily without the need for additional material or tooling - for convenient access to the bushing connection for test purposes.

**Customers can count on consistent, high quality products, driven by TE's proven innovation and backed by our extraordinary customer support.**

## Elastomeric Insulating Bushing Boot 24 kV (RCAB)



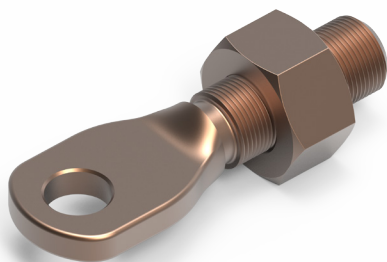
Technical information	RCAB 5120
Maximum system voltage	24 kV
Basic impulse level	125 kV
Bushing diameter	46 - 61 mm
Bushing types: to DIN, CENELEC, ANSI	400/630 A
Cable cross section	35 - 300 mm <sup>2</sup>

### Ordering information

Each kit contains elastomeric insulating boots for three phases and installation instructions.

### Related Product Information

Test report PPR 1383



The universal screw EXRM-1366 is supplied on request

[te.com/energy](http://te.com/energy)

© 2017 TE Connectivity. All Rights Reserved. EPP-0842-0517

Raychem, TE, TE Connectivity and TE connectivity (logo) are trademarks. Other logos, product and/or company names might be trademarks of their respective owners. While TE has made every reasonable effort to ensure the accuracy of the information in this data sheet, TE does not guarantee that it is error-free, nor does TE make any other representation, warranty or guarantee that the information is accurate, correct, reliable or current. TE reserves the right to make any adjustments to the information contained herein at any time without notice. TE expressly disclaims all implied warranties regarding the information contained herein, including, but not limited to, any implied warranties of merchantability or fitness for a particular purpose. The dimensions in this data sheet are for reference purposes only and are subject to change without notice. Specifications are subject to change without notice. Consult TE for the latest dimensions and design specifications.

### FOR MORE INFORMATION: TE Technical Support Centers

USA:	+ 1 800 327 6996
Canada:	+ 1 (905) 475-6222
Mexico:	+ 52 (0) 55-1106-0800
Latin/S. America:	+ 54 (0) 11-4733-2200
France:	+ 33 380 583 200
UK:	+ 44 0870 870 7500
Germany:	+ 49 89 6089 903
Spain:	+ 34 916 630 400
Italy:	+ 39 333 250 0915
Benelux:	+32 16 508 695
Russia:	+7 495-790 790 2-200
China:	+ 86 (0) 400-820-6015