

ELASTOMERIC INSULATING BUSHING BOOT (RCAB)

FOR TERMINATIONS UP TO 17.5KV

KEY FEATURES

- Tool free application
- High-performance insulation material
- Excellent track and erosion resistance
- Removable and reinstallable
- Quick and easy installation
- Unlimited shelf life
- Connection can be energized directly after installation
- One product for inline and right angle application

TE Connectivity (TE)'s Raychem elastomeric insulating boots are moulded parts which fit over the connection between the cable lug and the inline or right-angled equipment bushing to improve phase-to-phase and phase-to-ground insulation. They are used in switchgear and transformer cable boxes, where the air clearances are insufficient for normal operation, or to protect against flashover due to rodents or high humidity.

The non-tracking elastomeric housing has excellent erosion resistance, dielectric properties and environmental resistance, giving superb performance in areas of high humidity and electrical stress.

TE's Raychem RCAB boots work in combination with all Raychem termination product lines including both elastomeric and traditional heat shrink technology.

TE's Raychem RCAB boots are quick and easy to install and do not require any taping of the bushing or the termination. The boot can easily be removed and reinstalled without the need for additional material or tooling, allowing access to the bushing connection for test purposes.

Customers can count on consistent, high quality products, driven by TE's proven innovation and backed by our extraordinary customer support.

Elastomeric Insulating Bushing Boot 17.5 kV (RCAB)



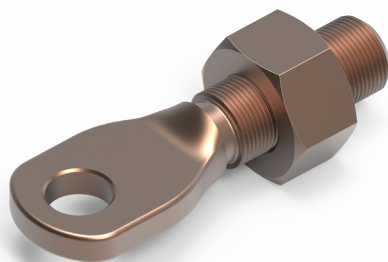
Technical information	RCAB 4110	RCAB 4120
Maximum system voltage	17.5 kV	17.5 kV
Basic impulse level	95 kV	95 kV
Collar size	No. 1	none
Bushing diameter	31 - 45 mm	46 - 70 mm
Bushing types: to DIN, CENELEC, ANSI	-	400/630 A
Cable cross section	35 - 400 mm ²	35 - 400 mm ²

Ordering information

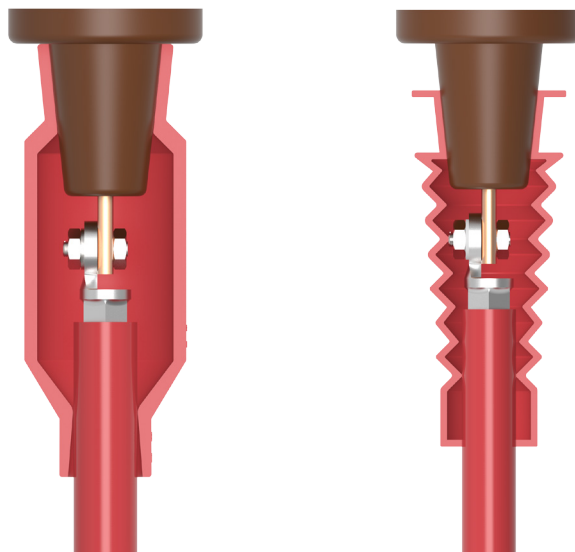
Each kit contains elastomeric insulating boots, collars (if required) for three phases and installation instructions.

Related Product Information

Test report PPR 1336



The universal screw EXRM-1366 is supplied on request



te.com/energy

© 2017 TE Connectivity. All Rights Reserved. EPP-0788-0517

RAYcehm, TE, TE Connectivity and TE connectivity (logo) are trademarks. Other logos, product and/or company names might be trademarks of their respective owners. While TE has made every reasonable effort to ensure the accuracy of the information in this data sheet, TE does not guarantee that it is error-free, nor does TE make any other representation, warranty or guarantee that the information is accurate, correct, reliable or current. TE reserves the right to make any adjustments to the information contained herein at any time without notice. TE expressly disclaims all implied warranties regarding the information contained herein, including, but not limited to, any implied warranties of merchantability or fitness for a particular purpose. The dimensions in this data sheet are for reference purposes only and are subject to change without notice. Specifications are subject to change without notice. Consult TE for the latest dimensions and design specifications.

FOR MORE INFORMATION: TE Technical Support Centers

USA:	+ 1 800 327 6996
Canada:	+ 1 (905) 475-6222
Mexico:	+ 52 (0) 55-1106-0800
Latin/S. America:	+ 54 (0) 11-4733-2200
France:	+ 33 380 583 200
UK:	+ 44 0870 870 7500
Germany:	+ 49 89 6089 903
Spain:	+ 34 916 630 400
Italy:	+ 39 333 250 0915
Benelux:	+32 16 508 695
Russia:	+7 495-790 790 2-200
China:	+ 86 (0) 400-820-6015