



INSULATOR FITTINGS AND HARDWARE

CLAMPS, STUDS AND PINS

KEY FEATURES

- Quality design and manufacturing
- Complies with AS2947 and AS1154
- Available either with insulators or as separate components

TE Connectivity covers a wide range of polymeric, ceramic and hybrid insulators. For decades these products have demonstrated reliable performance in various types of applications all over the world.

Insulator clamps are available to suit clamp-top line post insulators and are supplied either as integral or separate components.

Insulator pins are designed to comply with AS1154 and to suit the range of pin-type insulators supplied by TE.

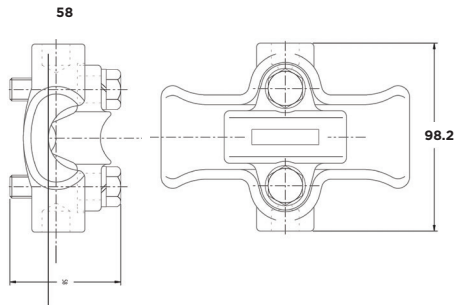
Studs are available to suit common insulator thread forms for use on steel or timber cross-arms.

Contact your local TE Sales Engineer for other designs or custom-made products.

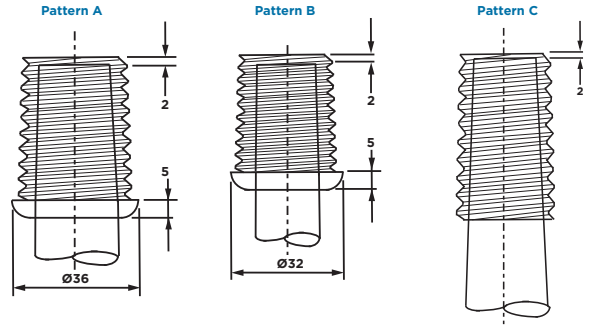
Customers can count on consistent, high quality products, driven by TE's proven innovation and backed by our extraordinary customer support.



Clamps for Aluminium & Copper Conductors



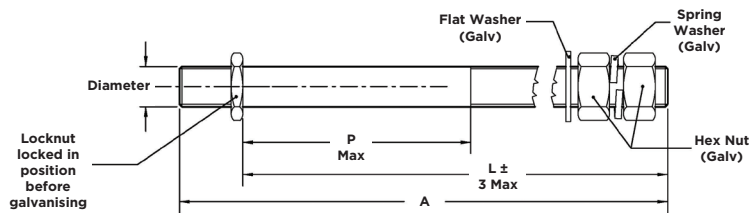
Pin Types



ORDERING INFORMATION			
Cat No.		Conductor Dia. mm	
Ferrous	Aluminium	Max.	Min.
	IC-Y11195	32	7
IC-047101	IC-042111	14.2	6.35
IC-047102		21.3	8.89
IC-047103		26.9	12.7
IC-047104	IC-047114	38.1	25.4

ORDERING INFORMATION						
Standard Pins	Min Failing Load (kN)	Shank			Stem Length J	Pin Head Pattern
		Diameter A	Length B	Thread Length min C		
IP-B-100-3.5-140-M16	3.5	16	140	50	98	B
IP-A-130-7-165-M20	7	20	165	80	128	A
IP-C-150-7-165-M20	7	20	165	80	148	C
IP-C-150-11-165-M24	11	24	165	80	148	C
IP-C-200-11-165-M24	11	24	165	80	198	C
IP-C-300-7-160-M24	7	24	165	80	298	C

Studs



ORDERING INFORMATION						
Cat No.	Thread	Overall Length A	Shank Length L	Length P max.	To suit X-arm min.	To suit X-arm max.
IS-11007	M24	239	200	77	71	150
IS-10885	M24	219	180	78	72	130
IS-10886	M24	100	61	5	-	12
IS-10887	M20	239	200	77	71	156

ORDERING INFORMATION						
Special Pins	Min Failing Load (kN)	Shank			Stem Length J	Pin Head Pattern
		Diameter A	Length B	Thread Length min C		
IP-B-100-3.5-165-M16	3.5	16	165	70	98	B
IP-A-130-7-200-M20	7	20	200	100	128	A
IP-C-150-7-200-M20	7	20	200	100	148	C
IP-C-200-11-200-M24	11	24	200	100	198	C

FOR MORE INFORMATION:

TE Customer Support Centers

NSW/QLD/NT/ACT: +61 (2) 9554 2695
 VIC/TAS/SA: +61 (3) 9271 5243
 WA: +61 (8) 9358 7806
 New Zealand: +64 (9) 634 4580