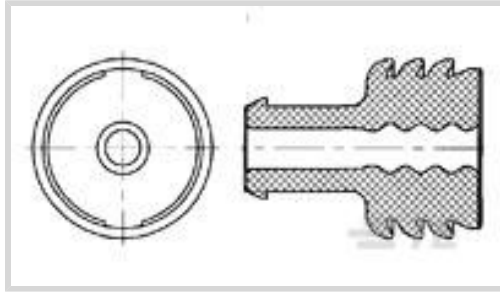




Connectors > Connector Accessories > Connector Seals & Cavity Plugs



Connector Seal & Plug Type: **Cavity Blanking Plug**

Primary Product Material: **Silicone**

Primary Product Color: **Natural**

Cavity Diameter: **6.4 mm [.252 in]**

Compatible Insulation Diameter Range: **7.2 mm [.283 in]**

## Features

### Product Type Features

Connector Seal & Plug Type	Cavity Blanking Plug
----------------------------	----------------------

### Body Features

Primary Product Material	Silicone
Primary Product Color	Natural

### Dimensions

Cavity Diameter	6.4 mm [.252 in]
Compatible Insulation Diameter Range	7.2 mm [.283 in]

### Usage Conditions

Operating Temperature (Max)	65 °C, 70 °C, 75 °C, 80 °C, 85 °C, 90 °C, 100 °C, 105 °C, 110 °C, 120 °C, 125 °C, 130 °C [149 °F][158 °F][167 °F][176 °F][185 °F][194 °F][212 °F][221 °F][230 °F][248 °F][257 °F][266 °F]
Operating Temperature Range	-40 – 130 °C[-40 – 266 °F]

### Industry Standards

UL Flammability Rating	None
------------------------	------

### Other

Resistance to Hydrocarbons	Poor
Shore A Hardness	50
Contains Lubricant	No



## Product Compliance

[For compliance documentation, visit the product page on TE.com>](#)

EU RoHS Directive 2011/65/EU	Compliant
EU ELV Directive 2000/53/EC	Compliant
China RoHS 2 Directive MIIT Order No 32, 2016	No Restricted Materials Above Threshold
EU REACH Regulation (EC) No. 1907/2006	Current ECHA Candidate List: JUNE 2023 (235) Candidate List Declared Against: JUNE 2023 (235) Does not contain REACH SVHC
Halogen Content	Low Halogen - Br, Cl, F, I < 900 ppm per homogenous material. Also BFR/CFR/PVC Free
Solder Process Capability	Not applicable for solder process capability

### Product Compliance Disclaimer

This information is provided based on reasonable inquiry of our suppliers and represents our current actual knowledge based on the information they provided. This information is subject to change. The part numbers that TE has identified as EU RoHS compliant have a maximum concentration of 0.1% by weight in homogenous materials for lead, hexavalent chromium, mercury, PBB, PBDE, DBP, BBP, DEHP, DIBP, and 0.01% for cadmium, or qualify for an exemption to these limits as defined in the Annexes of Directive 2011/65/EU (RoHS2). Finished electrical and electronic equipment products will be CE marked as required by Directive 2011/65/EU. Components may not be CE marked. Additionally, the part numbers that TE has identified as EU ELV compliant have a maximum concentration of 0.1% by weight in homogenous materials for lead, hexavalent chromium, and mercury, and 0.01% for cadmium, or qualify for an exemption to these limits as defined in the Annexes of Directive 2000/53/EC (ELV). Regarding the REACH Regulation, the information TE provides on SVHC in articles for this part number is based on the latest European Chemicals Agency (ECHA) 'Guidance on requirements for substances in articles' posted at this URL: <https://echa.europa.eu/guidance-documents/guidance-on-reach>

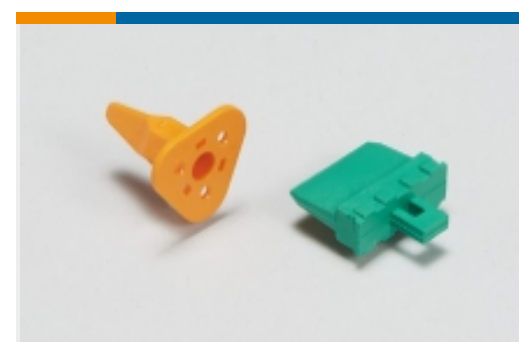
## Also in the Series | MQS



Automotive Connector Caps & Covers (111)



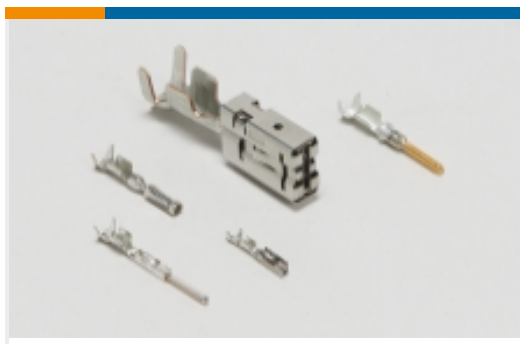
Automotive Connector EMC Shielding (3)



Automotive Connector Locks & Position Assurance(27)



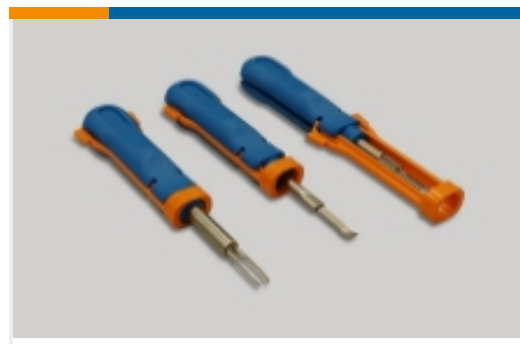
Automotive Housings(376)



Automotive Terminals(89)



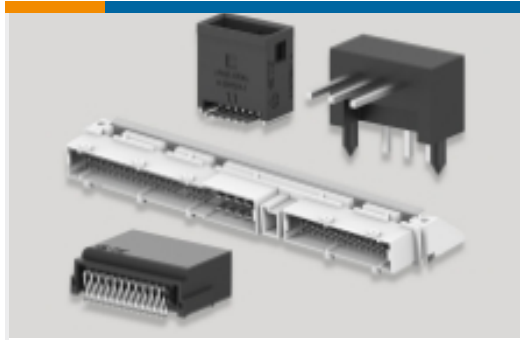
Connector Seals & Cavity Plugs(25)



Insertion & Extraction Tools(42)



Other Automotive Connector Accessories(7)

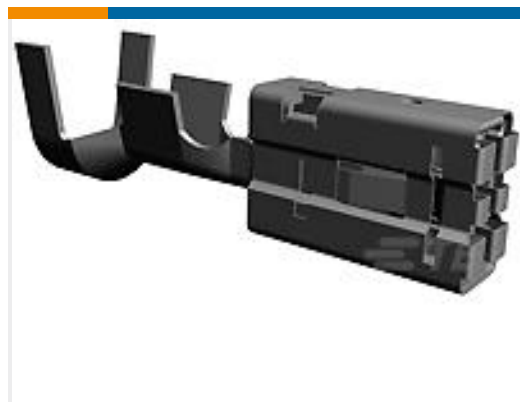


PCB Headers & Receptacles(143)

## Customers Also Bought



TE Part #1241603-1  
MQS, RECEPTACLE AND TAB



TE Part #1-967590-2  
AMP MCP 9.5, CONTACT, SWS



TE Part #9-967689-2  
MESSERLEIS3,0 69P



TE Part #5-962886-3  
MQS0,63 Ag tab LL EDS 0,2-0,5



TE Part #5-965908-3  
MQS0,63 Ag tab LL EDS 0,5-0,75



TE Part #5039306119  
DR-25-1/2-0-30MM



TE Part #5039276067  
DR-25-1/4-0-30MM

## Documents

### Product Drawings

[MPQ BLINDSTOPFEN6,4](#)

English

[MPQ BLINDSTOPFEN6,4](#)

English

### CAD Files

[Customer View Model](#)

[ENG\\_CVM\\_CVM\\_967653-1\\_A.2d\\_dxf.zip](#)



English

[3D PDF](#)

3D

Customer View Model

[ENG\\_CVM\\_CVM\\_967653-1\\_A.3d\\_igs.zip](#)

English

Customer View Model

[ENG\\_CVM\\_CVM\\_967653-1\\_A.3d\\_stp.zip](#)

English

By downloading the CAD file I accept and agree to the [Terms and Conditions](#) of use.