

# 2178423-1

## 6.3 mm(.250) FLAG F-SPRING FASTON LOW INSERTION FORCE



**Description** FLAG F-SPRING CONTACT LOW INSERTION FORCE RECEPTACLE

**Wire section range** 0.5~1.5 sqmm (AWG # 20- #16)

**Max. Insulator** 3.3mm

**Materials, Temperature & Contact resistance**

Part number	Material	Finishing	Max. temp.(C°)	Resistance(mΩ)
2178423-1	Steel	Nickel-plated	400	1.68

Note: Temperature per IEC 61210 standard. Contact resistance test method per IEC 60512 Standard

**Material thickness** 0.4mm

**Current carrying capability**

Wire range (AWG)	Continues rated current (A)
20AWG	5
18AWG	7
16AWG	10

Note: Current carrying capacity according to wire size per IEC 61210

**Insertion/Withdrawal forces**

	TE connectivity	
	Spec	Typical value
1 <sup>st</sup> Insertion	35N max.	< 30N
1 <sup>st</sup> Withdrawal	40N min.	>60N
6 <sup>th</sup> Withdrawal	20N min.	>20N

**Applicator part number** 2150335-2

**Application spec** 114- 64027

**Product spec** 108- 64027

**Wire strping length** 4.8mm±0.5

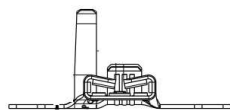
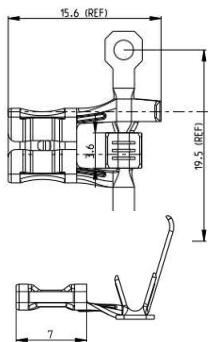
**Crimping parameters & Pull out force**

Wire range(AWG)	Conductor		Insulator	Pull-out force		
	Height(mm)	Width(mm)	Width(mm)	UL 310(N)	IEC 61210(N)	Measured(N)
20	1.59	1.78 "F"	3.56	58N Min..	58N Min.	130.8 (AVG.)
18	1.71	1.78 "F"	3.56	89N Min.	89N Min.	175.2 (AVG.)
16	1.88	1.78 "F"	3.56	133N Min.	133N Min.	271.8 (AVG.)

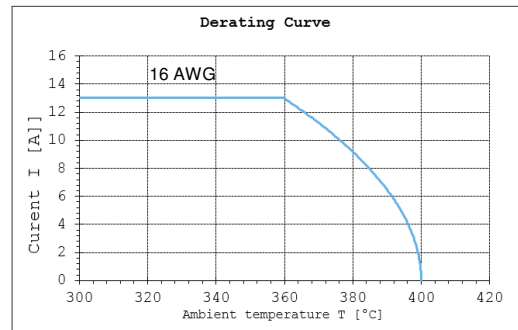
**Packing** 2000 Pieces per reel, 6000 Pieces per box,

**Approvals** UL certification No.: E66717-20150429; VDE certification No: 40043271; RoHS Compliant; Reach Compliant.

**Drawing**



**Derating curve**



Note: Maximum current VS maximum ambient temperature