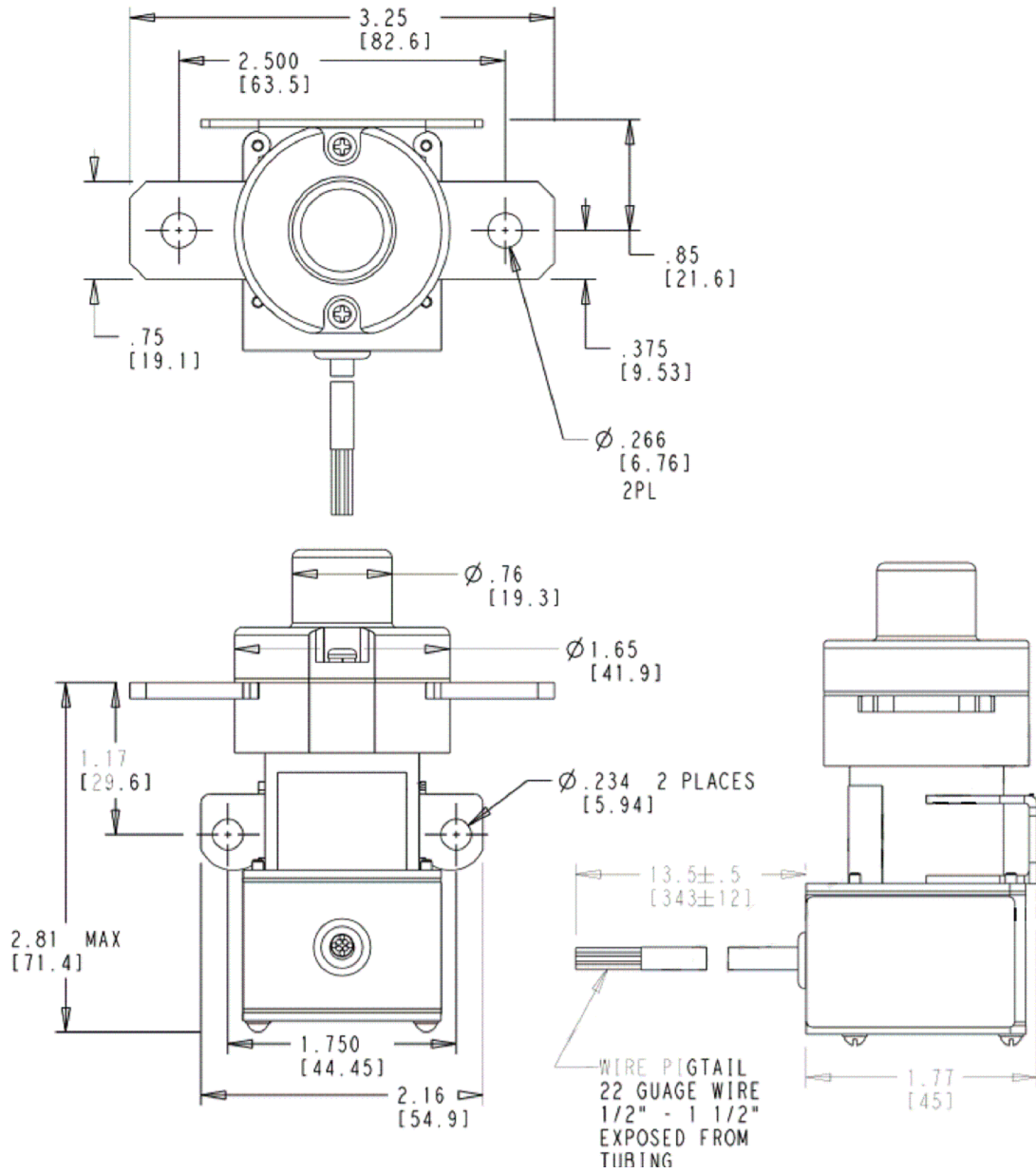


K4001A3C1
 CONTACTOR-SPST N.O. DB
 400 AMP, 28 VDC

REVISIONS				
REV.	ECO	DESCRIPTION	DATE	APPROVED
C	19-007176	-	08MAY2019	AH



ALL DIMENSIONS ARE IN INCHES



TE CONNECTIVITY
 175 N. DIAMOND STREET MANSFIELD,
 OHIO 44902

TITLE

CONTACTOR-SPST N.O. DB
 400 AMP, 28 VDC

TE P.N.

2252005-7

DWG NO.

K4001A3C1

DS

DATA SHEET

CAGE CODE
 74063

SCALE
 NONE

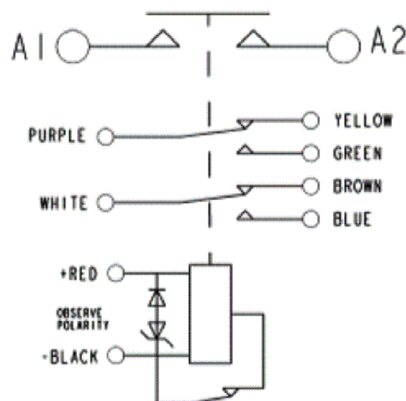
SHEET
 1 OF 2

REV
 C

GENERAL SPECIFICATION

CONSTRUCTION	GASKET SEALED
MAIN CONTACTS CONFIGURATION	SPST N.O. (DOUBLE BREAK)
VOLTAGE	28 VDC
CURRENT RESISTIVE	400 AMPS
MOTOR LOAD	1875 AMPS FOR 0 TO 5 SEC. 1700 AMPS FOR 5 TO 10 SEC. 1500 AMPS FOR 10 TO 15 SEC. 1200 AMPS FOR 15 TO 20 SEC. 1000 AMPS FOR 20 TO 25 SEC. 750 AMPS FOR 25 TO 30 SEC. 500 AMPS FOR 30 TO 90 SEC. THE ABOVE MOTOR CURRENTS REPRESENT A MOTORSTART CURVE FROM 0-90 SEC.
OVERLOAD	450 AMPS FOR 5 MINUTES. 1000 AMPS FOR 10 SEC. 2000 AMPS FOR 200 Ms.
RUPTURE	4000 AMPS
COIL DATA DUTY CYCLE	CONTINUOUS (ECONOMIZED)
MAX. OPERATE VOLTAGE	32 VDC
NOM. OPERATE VOLTAGE	28 VDC
PICKUP VOLTAGE	18 VDC MAX
DROPOUT VOLTAGE	1-7 VDC
PICKUP TIME	35 mS.
DROPOUT TIME	20 mS.
COIL CURRENT INRUSH	5.5 AMPS MAX AT 28 VDC & 25°C
HOLD	400 mA MAX AT 28 VDC & 25°C
SUPPRESSION	±42 VDC
AUXILIARY CONTACTS CONFIGURATION	2 SPDT
VOLTAGE	28 VDC
CURRENT RESISTIVE	5 AMPS
INDUCTIVE	2 AMPS
LAMP	1 AMP
LOW LEVEL	1 mA AT 28 VDC
ENVIRONMENTAL DATA TEMPERATURE	-55°C TO +85°C
ALTITUDE	51,000 FT (15,545M)
LIFE ELECTRICAL	50,000 CYCLES MIN.
LIFE MECHANICAL	100,000 CYCLES MIN.
MAX. WEIGHT	.77 LBS(350g)
NOTES	1. AUXILIARY CONTACTS ARE GOLD PLATED. 2. 1 MILLIAMPERE RATING DOES NOT APPLY IF CONTACTS HAVE SWITCHED LOADS ABOVE 1 MILLIAMPERE.

SCHEMATIC



STE
TE CONNECTIVITY
175 N. DIAMOND STREET MANSFIELD,
OHIO 44902

TITLE

CONTACTOR-SPST N.O. DB
400 AMP, 28 VDC

TE P.N.

2252005-7

DWG NO.

K4001A3C1

DS

DATA SHEET

CAGE CODE
74063

SCALE
NONE

SHEET
2 OF 2

REV
C