



# 2400-2485 & 4900-5875 MHz DUAL BAND STAMPED ANTENNA

**Part Numbers: 2118788-1, 2118788-2**

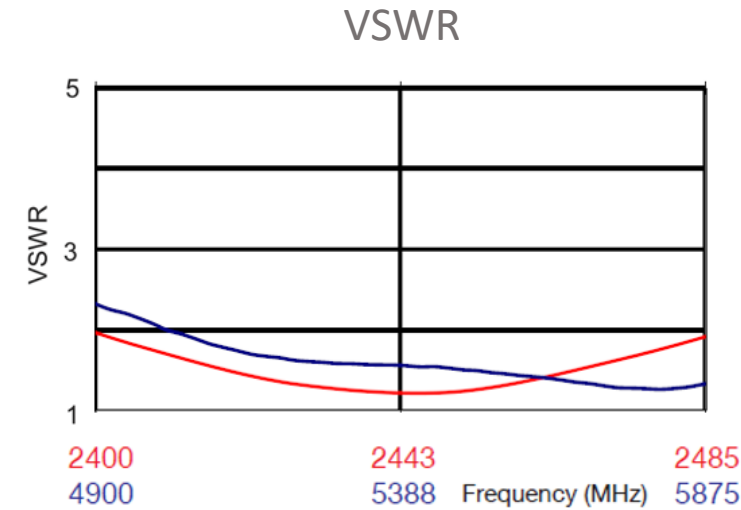
## FEATURES & BENEFITS

- IEEE 802.11 a/b/g/n/ac/ad, includes frequencies of Bluetooth, ZigBee, and Wi-Fi products)
- Global Frequency coverage
- On board SMD mount stamped PIFA antenna
- Minimal keep out zone requirement
- Performance dependent on ground plane size and design

## SPECIFICATIONS

Frequency Range (MHz)	2400-2485	4900-5875
VSWR	< 2.5:1	< 2.5:1
Average Efficiency	75%	75%
Peak Gain	1.9dBi	2.9dBi
Average Gain	-1.3dBi	-1.3dBi
Power Handling	3 Watt cw	
Feed Point Impedance	50 ohms	
Polarization	Linear	
Size	28.60 mm x 6.05 mm x 4.28 mm	
Weight	< 1.1 g	
Mounting	Surface mount	
Operating Temperature	-40 to +85°C	
Storage Temperature	-40 to +85°C	
Packaging Specification	Tape & Reel / Tray & Box	
Hazardous Materials	A certificate of conformance is available from the product page on TE website.	
Data measured in free space and on reference ground plane of 30 mm length and 35 mm width, application data might vary		

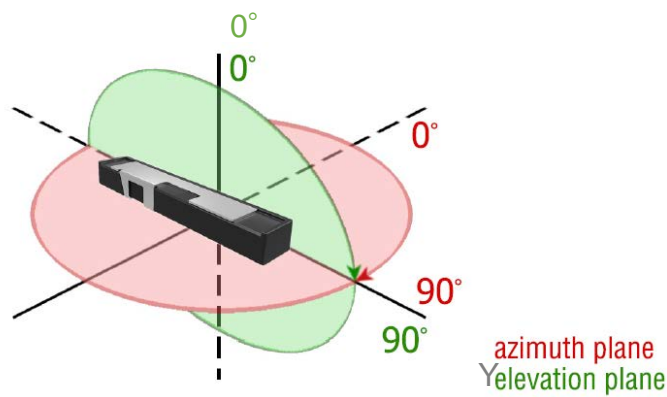
RF DATA



Data measured in free space and on reference ground plane of 30 mm length and 35 mm width, application data might vary

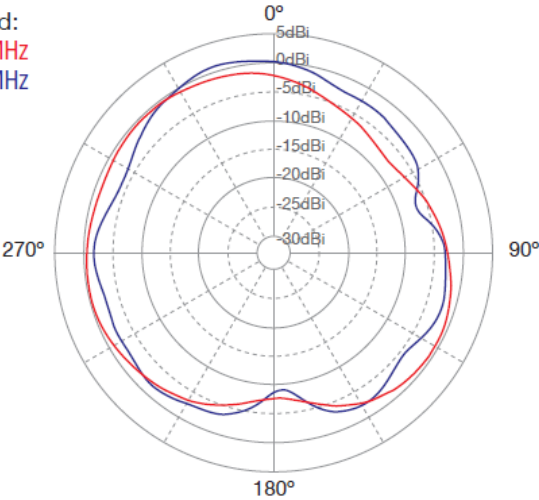
RADIATION PATTERN

Test setup



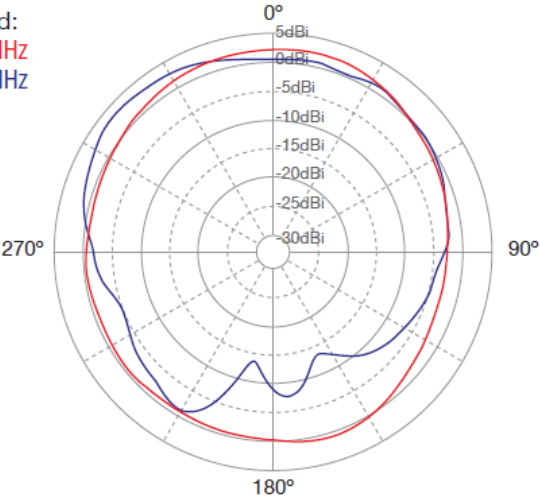
Azimuth

Legend:  
2440 MHz  
5470 MHz



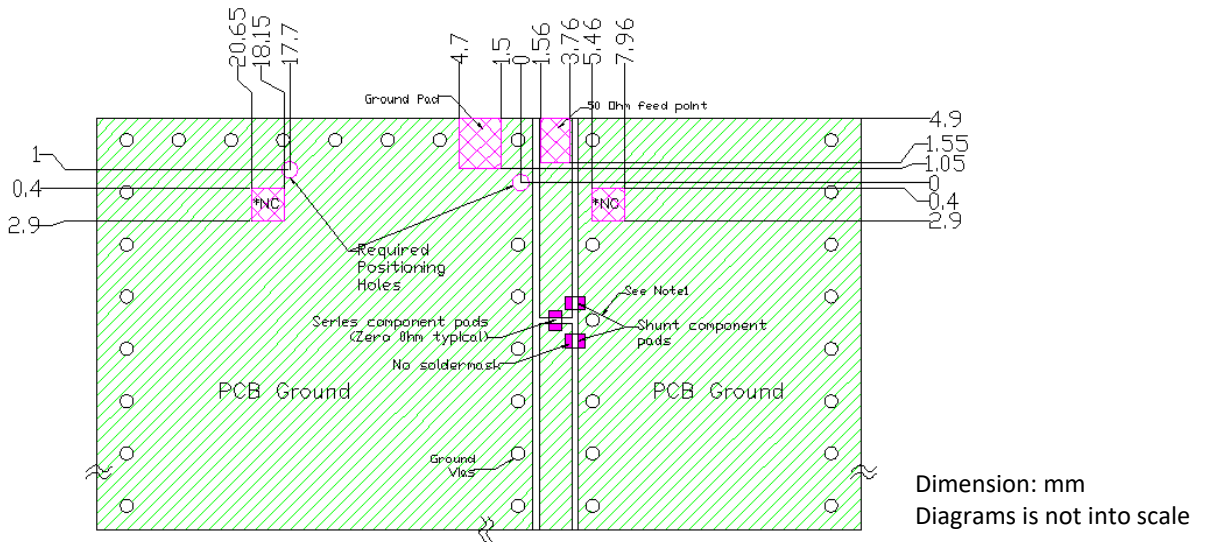
Elevation

Legend:  
2440 MHz  
5470 MHz



Data measured in free space and on reference ground plane of 30 mm length and 35 mm width, application data might vary

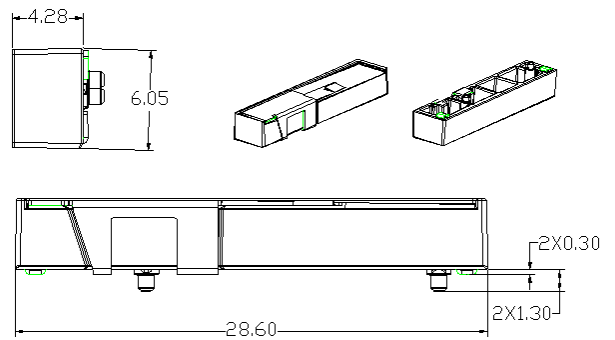
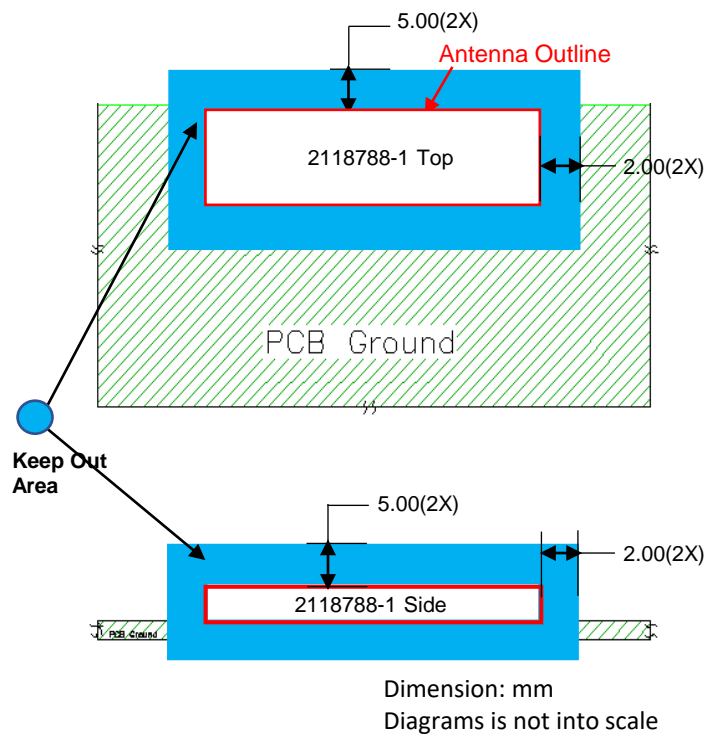
MOUNTING GUIDE



- NOTES: 1. Suggested matching component pads  
2. Antenna must be mounted on the edge of PCB.  
3. NC = No connection (mechanical mounting pads).  
4. For more information please call TE.

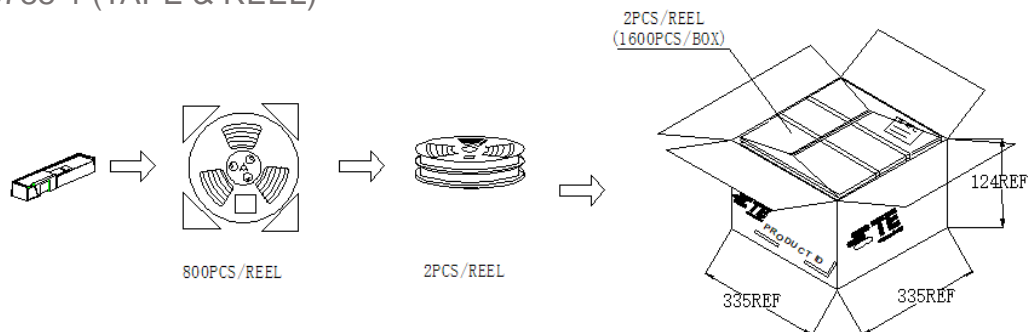
KEEP OUT AREA

DIMENSIONS

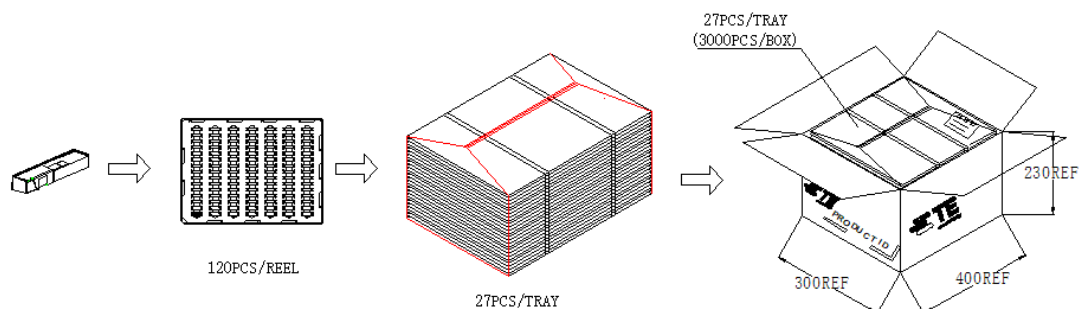


### PACKAGING

#### 2118788-1 (TAPE & REEL)



#### 2118788-2 (TRAY)



#### TE TECHNICAL SUPPORT CENTER

USA:	+1 (800) 522-6752
Canada:	+1 (905) 475-6222
Mexico:	+52 (0) 55-1106-0800
Latin/S. America:	+54 (0) 11-4733-2200
Germany:	+49 (0) 6251-133-1999
UK:	+44 (0) 800-267666
France:	+33 (0) 1-3420-8686
Netherlands:	+31 (0) 73-6246-999
China:	+86 (0) 400-820-6015

For phone numbers in other countries, go to [te.com/support-center](https://te.com/support-center)

#### te.com

TE Connectivity, TE Connectivity (logo) are trademarks. All other logos, products and/or company names referred to herein might be trademarks of their respective owners.

The information given herein, including drawings, illustrations and schematics which are intended for illustration purposes only, is believed to be reliable. However, TE Connectivity makes no warranties as to its accuracy or completeness and disclaims any liability in connection with its use. TE Connectivity's obligations shall only be as set forth in TE Connectivity's Standard Terms and Conditions of Sale for this product and in no case will TE Connectivity be liable for any incidental, indirect or consequential damages arising out of the sale, resale, use or misuse of the product. Users of TE Connectivity products should make their own evaluation to determine the suitability of each such product for the specific application.

© 2020 TE Connectivity Ltd. family of companies All Rights Reserved.

06/2022