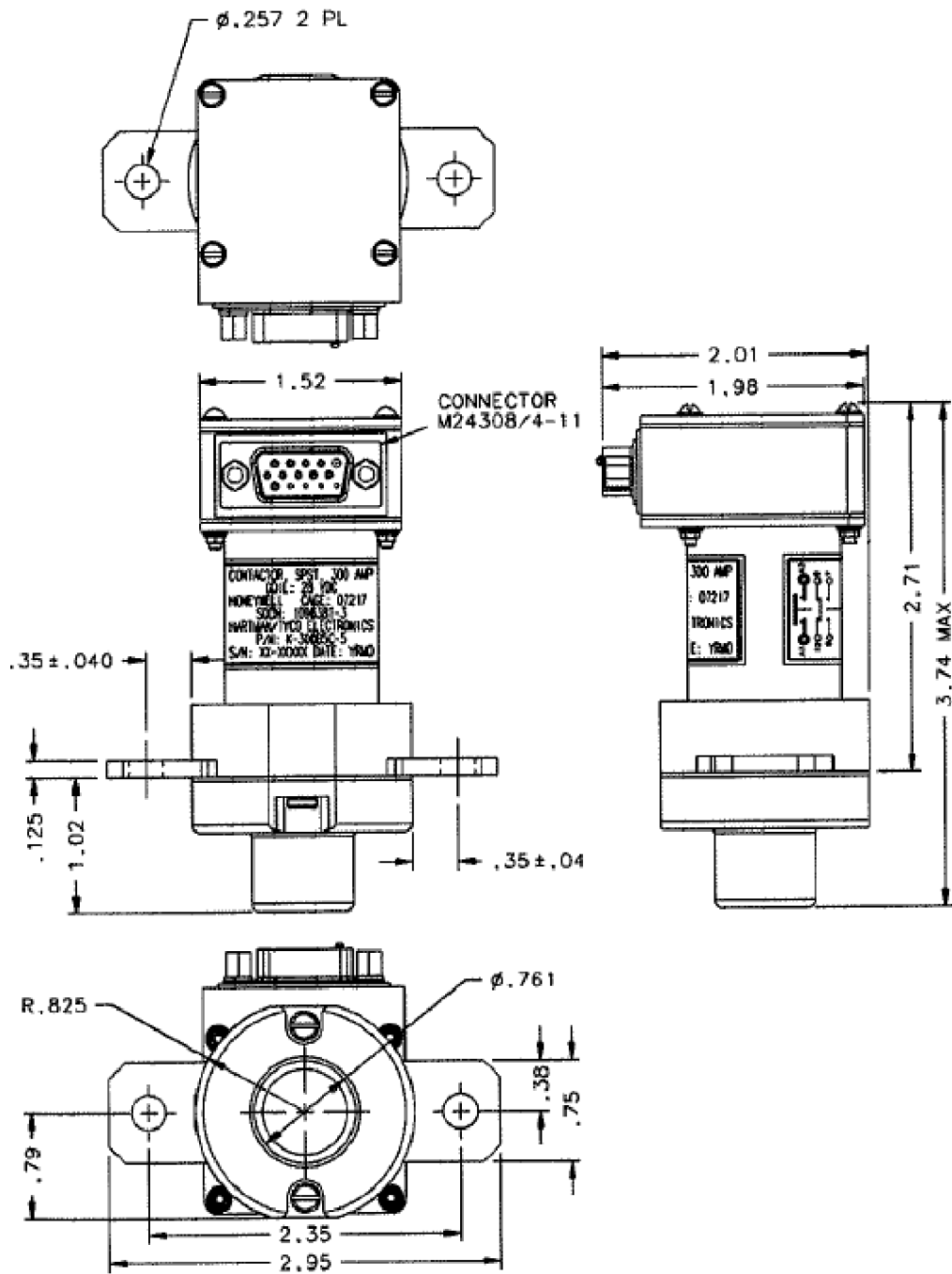



K-300B5C-5
 CONTACTOR SPST N.O. D.B.
 300 AMP, 28 VDC

REVISIONS				
REV.	ECO	DESCRIPTION	DATE	APPROVED
B	0569-04	REMOVED ITEM 4	06JUL2004	CB



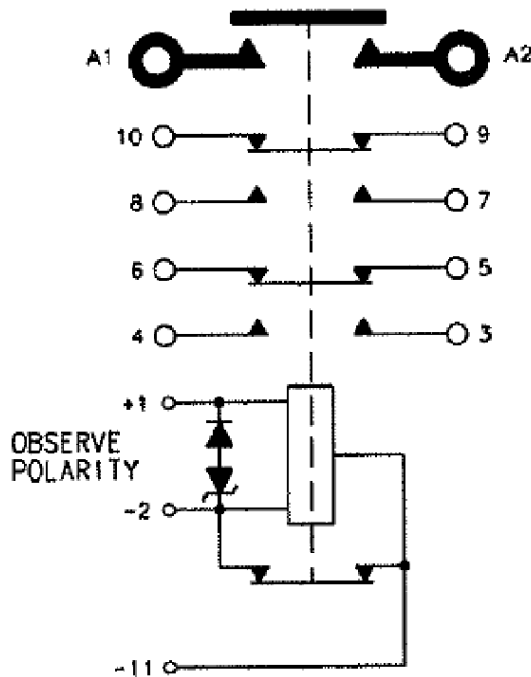
ALL DIMENSIONS ARE IN INCHES

 TE CONNECTIVITY 175 N. DIAMOND STREET MANSFIELD, OHIO 44902	TITLE CONTACTOR SPST N.O. D.B. 300 AMP, 28 VDC			
	TE P.N. 1616068-9	DWG NO. K-300B5C-5		
DS DATA SHEET	CAGE CODE 74063	SCALE NONE	SHEET 1 OF 2	REV B

GENERAL SPECIFICATION

<p>CONSTRUCTION MAIN CONTACTS CONFIGURATION VOLTAGE CURRENT</p>	<p>GASKET SEALED SPST N.O. (DOUBLE BREAK) 28 VDC 300 AMPS 450 AMPS FOR 5 MIN. 1000 AMPS FOR 10 SEC. 1500 AMPS 3000 AMPS</p>
<p>AUXILIARY CONTACTS CONFIGURATION VOLTAGE CURRENT</p>	<p>2 N.O., 2 N.C. 28 VDC 5 AMPS 2 AMPS 1 AMP 1 mA AT 28 VDC</p>
<p>COIL DATA DUTY CYCLE MAX OPERATE VOLTAGE NOM OPERATE VOLTAGE MAX PICKUP VOLTAGE</p>	<p>CONTINUOUS (ECONOMIZED) 32 VDC 28 VDC 13 VDC AT 20°C (FIRST APPLICATION) 16 VDC AT 85°C 9 VDC MAX</p>
<p>DROPOUT VOLTAGE COIL CURRENT INRUSH HOLD</p>	<p>8 AMP MAX AT 32 VDC AND -40°C 650 mA MAX AT 32 VDC AND 25°C 35 mSEC MAX AT 18 TO 32 VDC 20 mSEC MAX AT 28 VDC 5 mSEC MAX AT 18 TO 32 VDC</p>
<p>OPERATE TIME RELEASE TIME BOUNCE TIME</p>	
<p>ENVIRONMENTAL DATA TEMPERATURE ALTITUDE</p>	<p>-55°C TO 85°C 50,000 FEET</p>
<p>LIFE ELECTRICAL LIFE MECHANICAL WEIGHT MAX EST.</p>	<p>50,000 CYCLES MIN. 100,000 CYCLES MIN. .61 LBS.</p>

SCHEMATIC



TE CONNECTIVITY
 175 N. DIAMOND STREET MANSFIELD,
 OHIO 44902

TITLE

CONTACTOR SPST N.O. D.B.
 300 AMP, 28 VDC

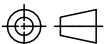
TE P.N.

1616068-9

DWG NO.

K-300B5C-5

THIRD ANGLE PROJECTION



THIS DRAWING PREPARED
 IN ACCORDANCE WITH
 ANSI/ASMEY14.5M-1982

CAGE CODE

74063

SCALE

NONE

SHEET

2 OF 2

REV

B