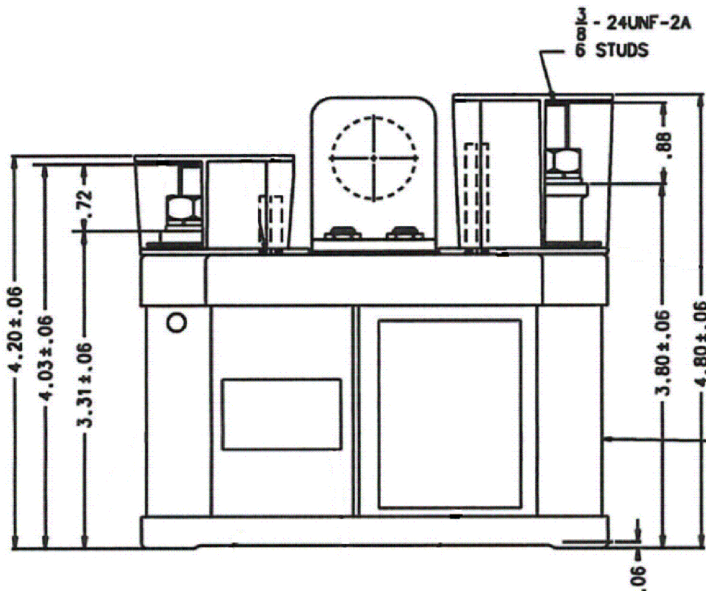
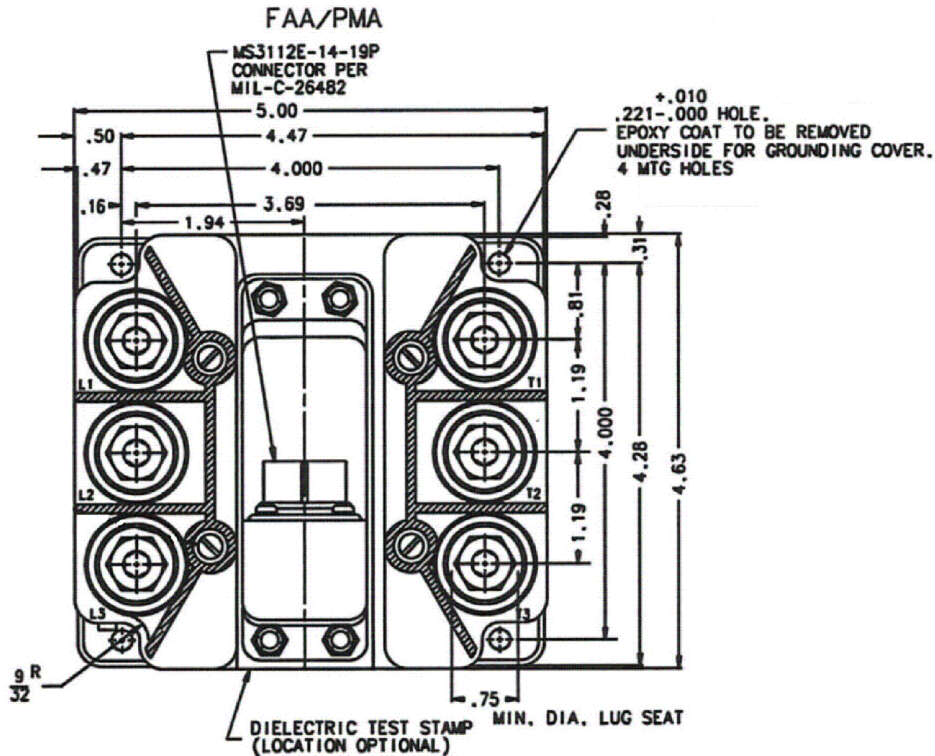


REVISIONS

REV.	ECO	DESCRIPTION	DATE	APPROVED
U	07-002742	ADDED ITEM 20	29JUN2006	CB

B-125BA  
 CONTACTOR-A.C. POWER  
 250AMP, 3PST N.O.



ALL DIMENSIONS ARE IN INCHES



TE CONNECTIVITY  
 175 N. DIAMOND STREET MANSFIELD,  
 OHIO 44902

TITLE

CONTACTOR-A.C. POWER  
 250AMP, 3PST N.O.

TE P.N.

1616002-1

DWG NO.

B-125BA

DS

DATA SHEET

CAGE CODE  
 74063

SCALE  
 NONE

SHEET  
 1 OF 2

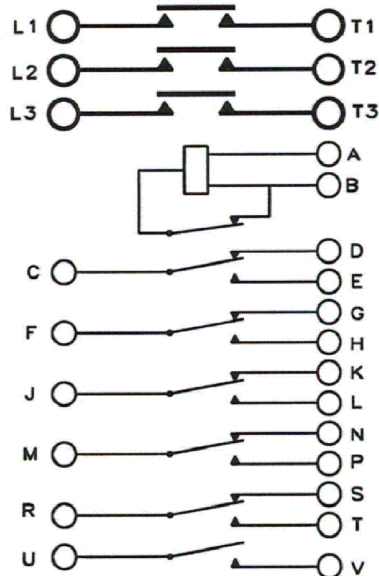
REV  
 U

## GENERAL SPECIFICATION

<b>CONSTRUCTION</b>	<b>METALLIC BASE GASKET SEALED (VENTED)</b>
<b>MAIN CONTACTS</b>	
CONFIGURATION	3 PST N.O. DOUBLE BREAK
VOLTAGE (NOMINAL)	208 VAC 400 HZ.
CURRENT: RES.	250 AMP
IND.	250 AMP
MOTOR	125 AMP
RUPTURE	1800 AMP
OVER LOAD	1425 AMP
<b>OPERATE TIME:</b>	
OPENING	50 MILLISECONDS MAX (INTER D.C. SIDE)
<b>AUXILIARY CONTACTS</b>	
CONFIGURATION	1-SPST N.O., 5-SPDT
VOLTAGE (NOMINAL)	28 VDC 115/208 VAC 400 HZ.
CURRENT RES.	10 AMP LIMITED TO 7-1/2 AMP CON.
<b>COIL DATA</b>	
DUTY CYCLE	CONTINUOUS ECONOMIZING (SEE NOTE #1)
NOM. COIL VOLTAGE	18 TO 38 VDC
PICKUP MAX.	15.5 VDC OR 90 VAC (THRU T/R UNIT) AT 25°
DROPOUT VOLTAGE	7.5 VOLTS TO 3 VOLTS AT 25°C
RESISTANCE: HOLD	102 OHM ±20% AT 25°C
INRUSH	6.7 OHM ±20% AT 25°C
<b>MAX. WEIGHT</b>	5 LBS. 4 OZ.

- NOTE**
- 1 FOR USE WITH G.E. TRANSFORMER RECTIFIER UNIT 6RW105YF1 OR EQUIVALENT SUITABLE FOR CONTINUOUS OPERATION AT 28 V.D.C.
  2. COVER MATERIAL ALUMINUM
  3. TERMINAL IDENTIFICATION STAMPED ON COVER PLATE
  4. CONTINUOUS CAPACITY 250 AMP  
    RUPTURE CURRENT IS 7.2 X CONT. CAP.  
    OVERLOAD CURRENT IS 5.7 X CONT. CAP.  
    A C MOTOR CURRENT IS 5.0 X RATED MOTOR LOAD
  5. TERMINAL SHIELDS TO BE STAMPED "DANGER-HIGH VOLTAGE"
  6. THE CONTACTOR SHALL CONFORM TO THE REQUIREMENTS OF MIL-R-6106C TO THE EXTENT SPECIFIED HEREIN.
  7. FORMAL VERIFICATION OF COMPLIANCE OF THIS DRAWING TO MIL-R-6106C SHALL BE TO THE EXTENT SPECIFIED BY HARTMAN DOCUMENT NO. SM-284FM
  8. COVER & BASE MATERIAL IS ALUMINUM
  9. TERMINAL SHIELD (5) NYLON 3001  
    PLATE-BASE COVER (2) GLASS  
    MELANINE MIL-P-15037C

### SCHEMATIC



**TE**  
 TE CONNECTIVITY  
 175 N. DIAMOND STREET MANSFIELD,  
 OHIO 44902

TITLE

CONTACTOR—A.C. POWER  
 250AMP, 3PST N.O.

TE P.N.

1616002-1

DWG NO.

B-125BA

DS

DATA SHEET

CAGE CODE  
 74063

SCALE  
 NONE

SHEET  
 2 OF 2

REV  
 U