

# T92 SERIES TWO-POLE POWER RELAY

## GENERAL PURPOSE HIGH POWER PCB RELAYS

### FEATURES

- 30/40/50A switching capability
- Designed to control compressor loads to 3.5 tons, 110LRA / 25.3FLA
- Meets requirements of UL 508 and UL 873 spacings - 8mm through air, 9.5mm over surface
- Meets requirements of VDE 8mm spacing, 4kV dielectric coil-tocontact
- Meets requirements of UL Class F construction
- UL approved for 600VAC switching (1.5HP)
- Screw terminal version (consult factory for availability, ratings)
- Anti-explosive version available (Meets EN 60079-15)
- WG version available (Meets EN 60335-1)

### APPLICATIONS

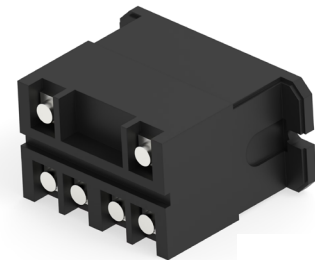
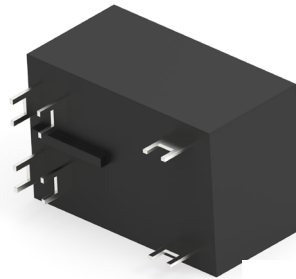
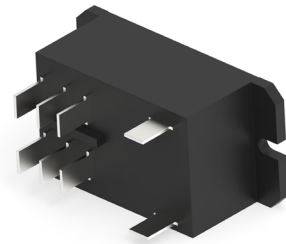
- HVAC
- Residential / commercial appliances
- Industrial controls
- Charging

### APPROVALS

- UL E214025
- CSA LR48471
- VDE 40019600
- TUV R 50083843 0008
- TUV 15090924 002
- TUV 15090883 001



Technical data of approved types on request



# T92 SERIES TWO-POLE POWER RELAY

## GENERAL PURPOSE HIGH POWER PCB RELAYS

### CONTACT DATA

Type	T92	T92H
Contact arrangement	2 form A (NO) 2 form C (CO)	2 form A (NO)
Rated voltage	277VAC	
Max. switching voltage	600VAC	
Rated current	30A/40A NO; 3A NC	50A NO
Overload current*	60A NO; 4.5A NC	75A NO
Contact material	Ag Alloy	
Min. recommended contact load	500mA (NO), 12VAC or 5VDC 100mA (NC), 12VAC or 5VDC	
Frequency of operation, with load	360 cycles per hour	
Operate/release time max., including bounce	25/25ms	
Initial contact resistance	< 100 mΩ at 6VDC 1A	

\*Note: Minimum electrical endurance 50 cycles

### CONTACT RATINGS<sup>1)</sup> (T92H TYPE)

Type	Load	Cycles
<b>UL508</b>		
NO	50A, 277VAC, resistive, 85°C	6x10 <sup>3</sup>

Note: Coil voltage 12-48VDC covered in UL approval

### CONTACT RATINGS<sup>1)</sup> (T92 TYPE)

Type	Load	Cycles
<b>UL508</b>		
<b>AgCdO</b>		
NO	40A, 277VAC, resistive	6x10 <sup>3</sup>
NO	30A, 277VAC, resistive (DC coil only)	250x10 <sup>3</sup>
NO	30A, 277VAC, resistive (AC coil only)	100x10 <sup>3</sup>
NO	10A, 600VAC, resistive	250x10 <sup>3</sup>
NO	1HP, 120VAC	100x10 <sup>3</sup>
NO	3HP, 240VAC	1x10 <sup>3</sup>
NO	1.5HP, 480VAC or 600VAC	100x10 <sup>3</sup>
NO	110LRA/25.3FLA, 240VAC	100x10 <sup>3</sup>
NO	7.3A, 240VAC, pilot duty	100x10 <sup>3</sup>
NO	20A, 28VDC, resistive	100x10 <sup>3</sup>
NO	TV10, 120VAC	25x10 <sup>3</sup>
NC	3A, 277VAC	100x10 <sup>3</sup>
NC	2A, 480VAC, general purpose	100x10 <sup>3</sup>
NC	1A, 600VAC	100x10 <sup>3</sup>

Type	Load	Cycles
<b>AgSnOInO</b>		
NO	40A, 240VAC, resistive 85°C	50x10 <sup>3</sup>
NO	30A, 277VAC, resistive (DC coil only)	250x10 <sup>3</sup>
NO	30A, 277VAC, resistive (AC coil only)	100x10 <sup>3</sup>
NO	20A, 506VAC, resistive	100x10 <sup>3</sup>
NO	1.5HP, 120VAC, 2 pole making/breaking (Fig.1)	100x10 <sup>3</sup>
NO	3HP, 240VAC, 3 phase (DC coil only)	100x10 <sup>3</sup>
NO	3HP, 480VAC, 3 phase (DC coil only)	100x10 <sup>3</sup>
NO	2HP, 600VAC, 3 phase (DC coil only)	100x10 <sup>3</sup>

### Special Ag Alloy X (Cd Free), wash tight

NO	30A, 250VAC, resistive	100x10 <sup>3</sup>
NO	30A, 400VAC, resistive	100x10 <sup>3</sup>
NO	20A, 480VAC, resistive	100x10 <sup>3</sup>

### VDE

#### AgCdO, flange mount relays

NO	20A, 400VAC	100x10 <sup>3</sup>
NC	3A, 400VAC	30x10 <sup>3</sup>
CO	20A NO / 3A NC, 400VAC	30x10 <sup>3</sup>

### TUV

#### Anti-explosion, sealed device

NO	30A 250VAC, 25°C	100x10 <sup>3</sup>
----	------------------	---------------------

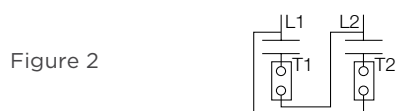
#### Anti-explosion, enclosed-break device

NO	15A 480VAC	100x10 <sup>3</sup>
----	------------	---------------------

ARI 780-86 Endurance Test (section 6.6):  
HVAC Definite Purpose Contactor Standard  
Normally Open Contacts  
Single Phase/Two Pole (Both poles together switching a single load)  
110 LRA, 25.3 FLA, 200K operations (DC Coil)



Single Phase Per Pole (Single load per pole)  
110 LRA, 18 FLA, 200K operations (DC Coil).  
60 LRA, 14 FLA, 200K operations (AC Coil).



### Mechanical endurance

T92	10x10 <sup>6</sup> ops.
T92H	1x10 <sup>6</sup> ops.

<sup>1)</sup> Contact ratings at 25°C (unless otherwise noted) with relay properly vented.  
FLA, LRA ratings are compatible with 3.5 ton compressor applications.

# T92 SERIES TWO-POLE POWER RELAY

## GENERAL PURPOSE HIGH POWER PCB RELAYS

### COIL DATA

Coil voltage range, DC coil/ AC coil	5 to 110VDC; 12 to 240VAC
Max. coil power	1.7W; 4.0VA
Max. coil temperature	155°C
Coil insulation system according UL	class F

### COIL VERSIONS, DC COIL (D TYPE)

Coil code	Rated voltage <sup>2)</sup> VDC	Operate voltage <sup>3)</sup> VDC	Release voltage VDC	Coil resistance $\Omega \pm 10\%$	Rated coil power W
5	5	3.75	0.6	14.9	1.7 W/ Min.  0.41 W hold
6	6	4.5	0.6	22	
9	9	6.75	0.9	48	
12	12	9	1.2	86	
18	18	13.5	1.8	197	
22	22	16.5	2.2	294	
24	24	18	2.4	350	
36	36	27	3.6	767	
48	48	36	4.8	1390	
110	110	82.5	11	7255	
120	120	90	12	8514	

2) For T92H type, after the energization time of 100ms with rated voltage, the coil requires a reduction of the coil voltage to 50% of rated voltage.

3) For Anti-explosion sealed type, the operate voltage is 80% of the rated coil voltage.

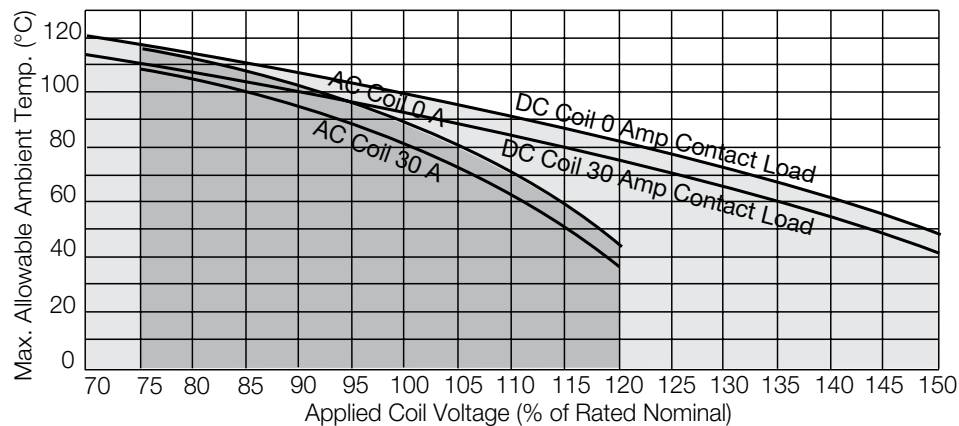
### COIL VERSIONS, AC COIL (A TYPE)

Coil code	Rated voltage VDC	Frequency Hz	Operate voltage VAC, 60Hz	Release voltage VAC, 60Hz	Coil resistance $\Omega \pm 10\%$	Rated coil power VA
12	12	60	9.6	1.2	9.1	4
24	24	60	19.2	2.4	36.6	4
110	110	60	88	11	793	4
120	110/120	50/60	96	12	950	4
208	206	60	166.4	20.8	2841	4
240	220/240	50/60	192	24	3800	4
277	250/277	50/60	221.6	27.7	5485	4

### COIL VERSIONS, AC COIL (F TYPE)

Coil code	Rated voltage VDC	Frequency Hz	Operate voltage VAC, 60Hz	Release voltage VAC, 60Hz	Coil resistance $\Omega \pm 10\%$	Rated coil power VA
12	12	50	9.6	1.2	11.2	3.5
24	24	50	19.2	2.4	44.4	3.5
48	48	50	38.4	4.8	179.2	3.5
240	240	50	192	24	4355	3.5

All figures are given for coil without preenergization, at ambient temperature +23°C. For A type, 110V/120V, 50/60Hz. Signify 50Hz Operation at Nominal 110V, 60 Hz Operation at Nominal 120V.



Note: This chart only apply for T92 standard type. For coil data of T92 Antiexplosion sealed type and T92H type, please contact TE engineering.

# T92 SERIES TWO-POLE POWER RELAY

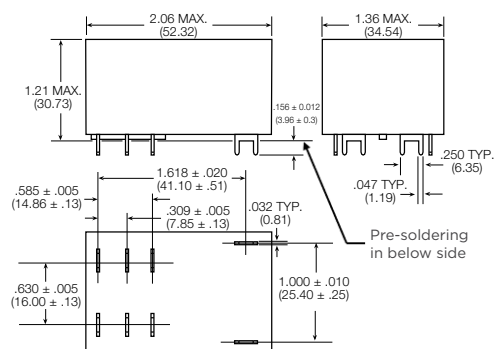
## GENERAL PURPOSE HIGH POWER PCB RELAYS

### INSULATION DATA

Initial dielectric strength	
between open contacts	1500V <sub>rms</sub>
between contact and coil	4000V <sub>rms</sub>
between adjacent contacts	2000V <sub>rms</sub>
Initial surge withstand voltage	
between contact and coil	8kV
Initial insulation resistance (@500VDC)	
between insulated elements	1x10 <sup>9</sup> Ω
Clearance/creepage	
between contact and coil	8mm clearance/9.5mm creepage

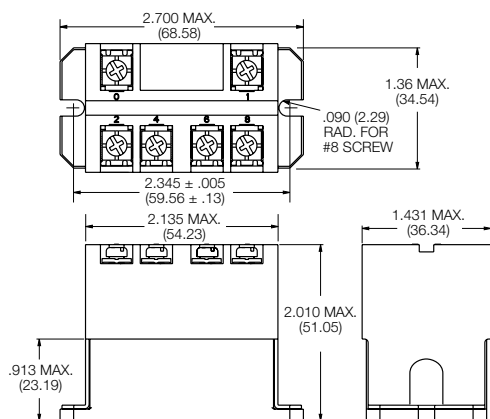
### DIMENSIONS (Unit: mm)

#### T92/T92H - Mounting and termination code 1



Note: Dimensions of the pins after tin soldering  
a) +0.3mm for the width and the thickness  
b) +1.0mm for the length

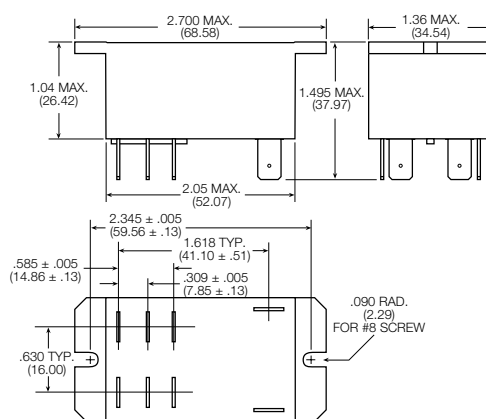
#### T92 - Mounting and termination code 5



### OTHER DATA

Material compliance	EU RoHS/ELV, China RoHS, REACH, Halogen content refer to the Product Compliance Support Center at <a href="http://www.te.com/customer-support/rohssupportcenter">www.te.com/customer-support/rohssupportcenter</a>
Ambient temperature	
DC coil	-55°C to 85°C
AC coil	-55°C to 65°C
Category of environmental protection	
IEC 61810	RTI - dust protected, RTII - flux proof, RTIII - wash tight
Vibration resistance (functional)	1.65mm max amplitude, 10-55 Hz
Shock resistance (functional)	10G for 11msec
Shock resistance (destructive)	100g
Terminal type	PCB / Quick Connect / Screw
Weight	86g
Resistance to soldering heat (for PCB Terminal)	
IEC 60068-2-20	260°C, 10s
Packaging/unit	tray/30 pcs., box/120 pcs.

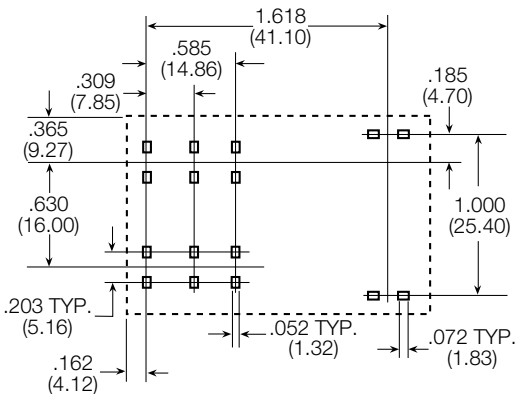
#### T92 - Mounting and termination code 2, 3 and 4



T92 SERIES TWO-POLE POWER RELAY  
GENERAL PURPOSE HIGH POWER PCB RELAYS

PCB LAYOUT

Bottom view on pins



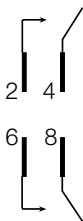
An alternate PC board layout utilizes .076 ± .003 (1.93 ± .076) diameter holes on the same center-to-center spacing shown above. Use of the rectangular holes is recommended for improved solderability.

Only necessary terminals are present on single throw models. Consequently, some holes will be unnecessary for single throw models.

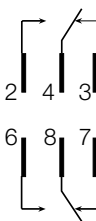
TERMINAL ASSIGNMENT

Bottom view on pins

2 form A



2 form C



PRODUCT CODE STRUCTURE (T92H TYPE)

Typical product code  
T92H P 7 D 1 X -12

Type

T92H	Power relay T92 High Performance (50A)
------	--

Enclosure

P	Dust protected plastic case
S	Wash-tight, tape sealed, plastic case (Mounting and termination code 1)

Contact arrangement

7	2 form A (2 NO)
---	-----------------

Coil Input

D	DC Coil
---	---------

Coil

Coil code	please refer to coil versions table
-----------	-------------------------------------

Contact material

X	Special Ag Alloy X (Cd Free)
---	------------------------------

Mounting and termination

1	Printed circuit board mount; printed circuit board terminals.
---	---

PRODUCT INFORMATION

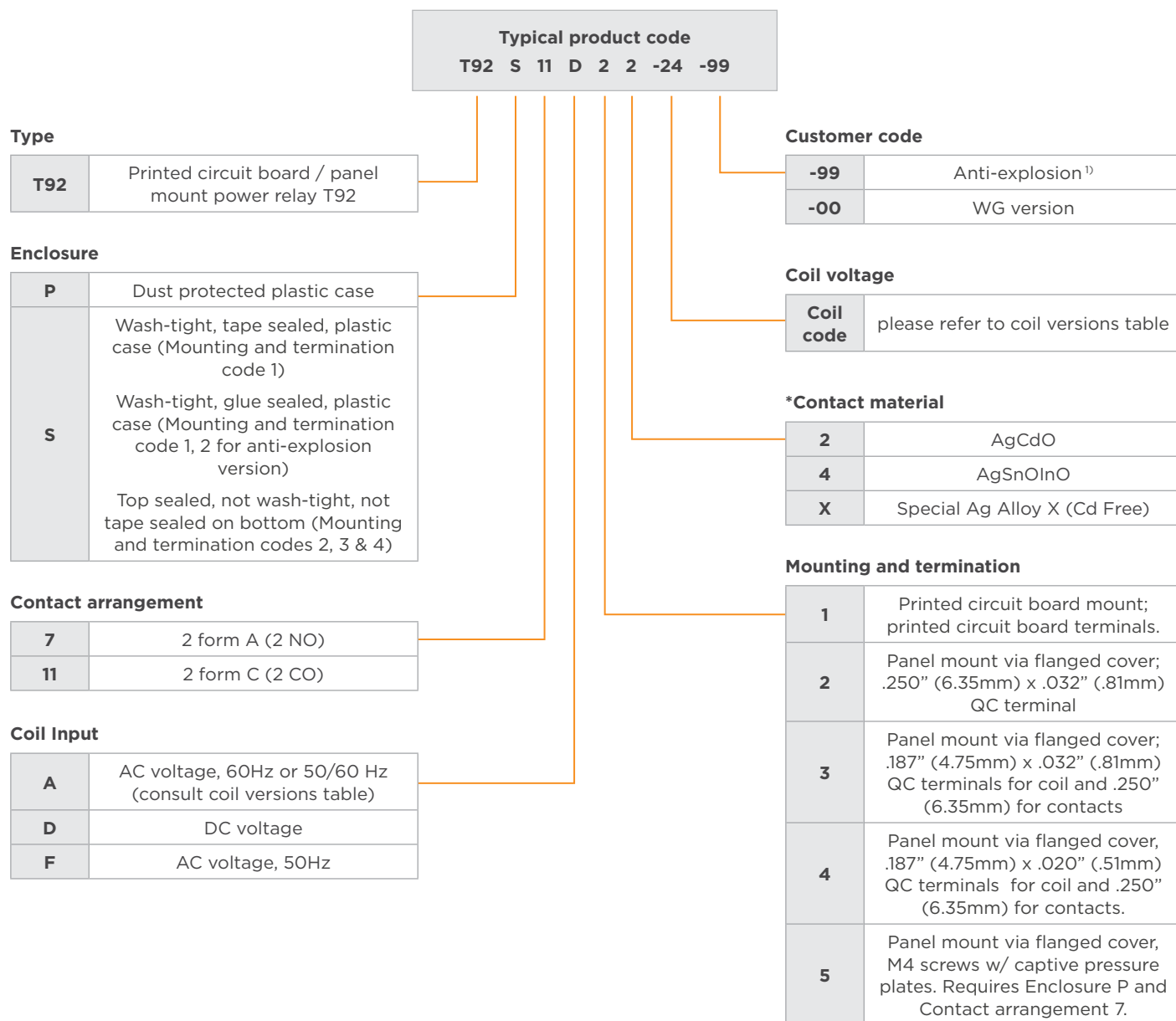
Product code	Enclosure	Contacts	Coil	Mounting	Contact material	Coil	Part Number
T92HP7D1X-12	Plastic dust cover	2 form A, 2 NO	DC	PCB terminals	Special Ag Alloy X (Cd Free)	12VDC	6-1423008-6
T92HP7D1X-24						24VDC	6-1423008-7
T92HP7D1X-48						48VDC	6-1423008-9

Note: This list represents the most common types and does not show all variants covered by this datasheet, other types on request.

# T92 SERIES TWO-POLE POWER RELAY

## GENERAL PURPOSE HIGH POWER PCB RELAYS

### PRODUCT CODE STRUCTURE (T92 TYPE)



\*Note. NC contact gold plated  
1) Only used for contact material 'X'.

## T92 SERIES TWO-POLE POWER RELAY

### GENERAL PURPOSE HIGH POWER PCB RELAYS

## PRODUCT INFORMATION

Product code	Enclosure	Contacts	Coil	Mounting	Contact material	Coil	Part Number		
T92P7A22-24	Plastic dust cover	2 form A, 2 NO	AC	Panel mount + quick connect	AgCdO	24 VAC	<a href="#">6-1393211-0</a>		
T92P7A22-120						120 VAC	<a href="#">5-1393211-7</a>		
T92P7A22-240						240 VAC	<a href="#">6-1393211-2</a>		
T92P7A22-277						277 VAC	<a href="#">6-1393211-3</a>		
T92P7A24-240					AgSnOInO	240 VAC	<a href="#">3-1423008-3</a>		
T92P7A52-120					Panel mount + screw terminals	AgCdO	120 VAC	<a href="#">1423008-8</a>	
T92P7A52-240							240 VAC	<a href="#">1-1423008-2</a>	
T92P7D12-12							12 VDC	<a href="#">6-1393211-5</a>	
T92P7D14-12			12 VDC	<a href="#">2-1423008-1</a>					
T92P7D12-24			DC	PCB terminals	AgSnOInO	12 VDC	<a href="#">2-1423008-1</a>		
T92P7D22-12						AgCdO	24 VDC	<a href="#">6-1393211-6</a>	
T92P7D22-12							12VDC	<a href="#">6-1393211-9</a>	
T92P7D22-24							24 VDC	<a href="#">7-1393211-1</a>	
T92P7D22-48					48 VDC		<a href="#">7-1393211-2</a>		
T92P7D24-12					AgSnOInO	12VDC	<a href="#">2-1423008-2</a>		
T92P7D24-24							1423008-9		
T92P7D42-24							24 VDC	<a href="#">7-1393211-5</a>	
T92P7D52-12							12 VDC	<a href="#">1-1423008-0</a>	
T92P7D52-24					24 VDC		<a href="#">1423967-1</a>		
T92P11A12-120					2 form C, 2 CO	AC	PCB terminals	AgCdO	120 VAC
T92P11A22-12		Panel mount + quick connect					12 VAC		<a href="#">3-1393211-9</a>
T92P11A22-24			24 VAC	<a href="#">4-1393211-3</a>					
T92P11A22-120			120 VAC	<a href="#">4-1393211-0</a>					
T92P11A22-240			240 VAC	<a href="#">4-1393211-4</a>					
T92P11A22-277	277 VAC		<a href="#">4-1393211-6</a>						
T92P11A24-240	AgSnOInO		240 VAC	<a href="#">3-1423008-7</a>					
T92P11A42-120	AgCdO	120VAC	<a href="#">4-1393211-8</a>						
T92P11D12-12		DC	Panel mount + quick connect	12 VDC			<a href="#">5-1393211-0</a>		
T92P11D22-12							<a href="#">5-1393211-3</a>		
T92P11D22-24						24 VDC	<a href="#">5-1393211-4</a>		
T92P11D24-12	AgSnOInO					12 VDC	<a href="#">3-1423008-5</a>		
T92P11D24-24		24 VDC	<a href="#">3-1423008-6</a>						
T92S7A12-24	Wash tight	2 form A, 2 NO	AC	PCB terminals		AgCdO	24 VAC	<a href="#">9-1393211-8</a>	
T92S7A12-120							120 VAC	<a href="#">9-1393211-7</a>	
T92S7A12-240							240 VAC	<a href="#">9-1393211-9</a>	
T92S7A22-24					Top sealed		Panel mount + quick connec	24 VAC	<a href="#">1393212-4</a>
T92S7A22-120								120 VAC	<a href="#">1393212-2</a>
T92S7A22-240								240 VAC	<a href="#">1393212-5</a>

Product code	Enclosure	Contacts	Coil	Mounting	Contact material	Coil	Part Number			
T92S7D12-12	Wash tight	2 form A, 2 NO	DC	PCB terminals	AgCdO	12 VDC	1393212-8			
T92S7D12-24						24 VDC	1-1393212-0			
T92S7D12-48						48 VDC	1-1393212-1			
T92S7D14-12					AgSnOInO	12 VDC	1-1423008-6			
T92S7D14-24						24 VDC	1-1423008-8			
T92S7D22-12	Top sealed			Panel mount + quick connect	AgCdO	12 VDC	1-1393212-4			
T92S7D22-24						24 VDC	1-1393212-7			
T92S7D22-110						110 VDC	1-1393212-3			
T92S11A12-24	Wash tight	2 form C, 2 CO	AC	PCB terminals		24 VAC	8-1393211-1			
T92S11A12-120	Wash tight	2 form C, 2 CO	AC	PCB terminals	AgCdO	120 VAC	8-1393211-0			
T92S11A12-240						240 VAC	8-1393211-2			
T92S11A22-12	Top sealed			Panel mount + quick connect		12 VAC	8-1393211-3			
T92S11A22-24						24 VAC	8-1393211-6			
T92S11A22-120						120 VAC	8-1393211-4			
T92S11A22-240						240 VAC	8-1393211-7			
T92S11D12-12	Wash tight		DC	PCB terminals		12 VDC	8-1393211-9			
T92S11D12-24						24 VDC	9-1393211-0			
T92S11D12-48						48 VDC	9-1393211-1			
T92S11D12-110						110 VDC	8-1393211-8			
T92S11D22-12	Top sealed			Panel mount + quick connect		12 VDC	9-1393211-3			
T92S11D22-24						24 VDC	9-1393211-4			
T92P7D12-12-99	Plastic dust cover	2 form A, 2 NO	DC	PCB terminals	AgCdO	12VDC	2-2071223-3			
T92S7D1X-12-99	Wash tight				Special Ag Alloy	12VDC	6-1423008-1			
T92S7D2X-12-99					Panel mount + quick connect	X (Cd Free)	12VDC	6-1423008-2		
T92S7D12-12-00	Wash tight (WG)			DC	PCB terminals	AgCdO	12VDC	1-2071223-7		

**Note:** This list represents the most common types and does not show all variants covered by this datasheet, other types on request.

**Notes:**

1. Datasheets and product specification according to IEC 61810-1 and to be used only together with the 'Definitions' section.
2. Datasheets and product data is subject to the terms of the disclaimer and all chapters of the 'Definitions' section, available at <http://relays.te.com/definitions>.
3. Datasheets, product data, 'Definitions' section, application notes and all specifications are subject to change.

**te.com**

©2025 TE Connectivity plc. All Rights Reserved.

TE Connectivity, TE connectivity (logo) and Every Connection Counts are trademarks owned or licensed by the TE Connectivity plc. family of companies. All other logos, products and/or company names referred to herein might be trademarks of their respective owners.

While TE has made every reasonable effort to ensure the accuracy of the information in this document, TE does not guarantee that it is error-free, nor does TE make any other representation, warranty or guarantee that the information is accurate, correct, reliable or current. TE reserves the right to make any changes to the information contained herein without prior notice. TE Connectivity assumes only those obligations set forth in the terms and conditions for this product and shall in no event be liable for any incidental, indirect, or consequential damages arising out of the sale, resale, use, or misapplication of the product. TE expressly disclaims any implied warranties with respect to the information contained herein, including, but not limited to, implied warranties of merchantability or fitness for a particular purpose. Dimensions, specifications and/or information contained herein are for reference purposes only and are subject to change without notice. Consult TE for the latest dimensions, specifications and/or information. Users of TE Connectivity products must make their own assessment as to whether the respective product is suitable for the respective desired application.

08/25 ED