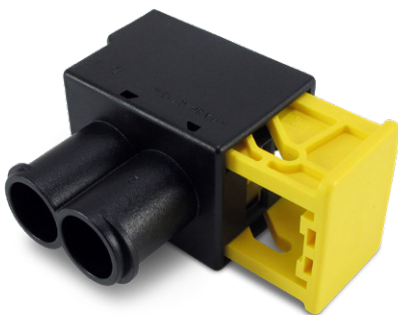


AMP MCP 9.5 TWO-POSITION CONNECTORS



FAST & FLEXIBLE TWO-POSITION POWER

Our high-power AMP MCP 9.5 two position connectors are designed for harsh environment wire-to-wire and wire-to-circuit board connections. These connectors are constructed of heavy-duty thermoplastic and withstand severe vibration and mechanical shock. The AMP MCP 9.5 two position connectors are IP 67 & IP 69K rated (with backshell) and protect connections from dust, dirt, and moisture. Several mounting options are available, including inline, flange, sealed flange, and PCB mount.



**RECEPTACLE HOUSING
(1355328-1)**



HEADER (2282162-1)



TAB HOUSING (1394026-1)
With Flange Seal



TAB HOUSING (1394026-2)
No Flange Seal



**ENVIRONMENTALLY
SEALED TO IP67
(IP69K WITH BACKSHELL)**

78

**UP TO 78A
(10MM² WIRE)**



**TOOL LESS
MOUNTING**

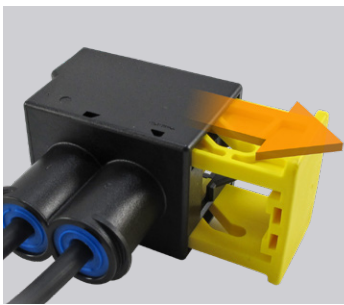


**VIBRATION
RESISTANT**

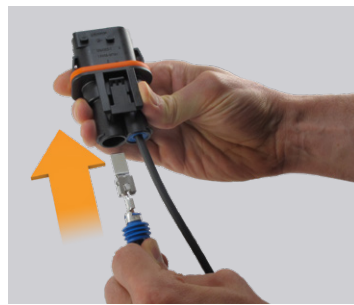


28 VDC

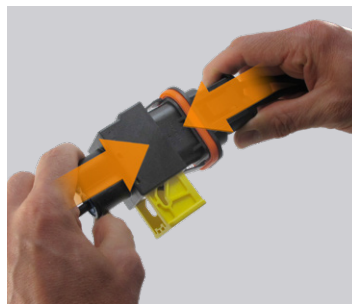
EASY TO USE



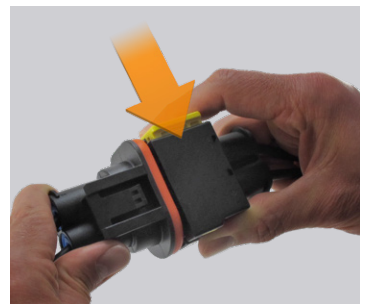
Step 1: Make sure the locking slide is in the open, unlocked position.



Step 2: Insert the crimped contacts into their appropriate housings, making sure they're oriented properly. Push the integrated secondary lock into the locked position.

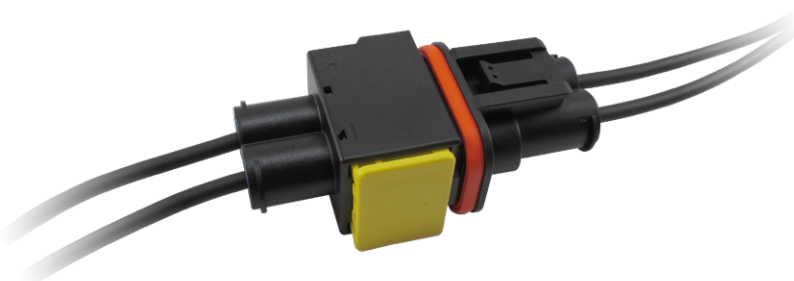


Step 3: Mate the two connector halves together.

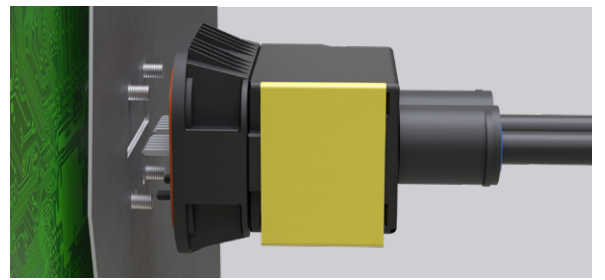


Step 4: Push the locking slide shut to secure the connectors together.

APPLICATIONS



WIRE-TO-WIRE



WIRE-TO-BOARD



**MCP 9.5 RECEPTACLE
CONTACT, STRIP FORM
(1-967590-1)**

- 6.0mm² - 10.0mm² wire
- 4.6mm - 6.4mm insulation
- Pre-tin plated



**MCP 9.5 TAB CONTACT,
STRIP FORM (963774-1)**

- 6.0mm² - 10.0mm² wire
- 4.6mm - 6.6mm insulation
- Pre-tin plated

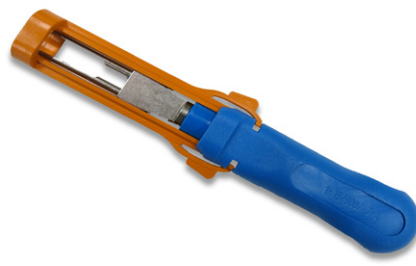


**WIRE SEAL, AMP MCP
(1355437-2)**

- 5.8 - 6.6mm insulation
- Sky Blue (10mm²)



**EXTRACTION TOOL,
MCP 9.5 RECEPTACLES
(539971-1)**



**EXTRACTION TOOL,
MCP 9.5 TABS
(1-1579007-7)**



**BACKSHELL
(2286685-1)**

**LEARN MORE
ON TE.COM**

