



DEUTSCH D-EASY Composite Feedthrough System

Modular Feedthrough Solutions for
Commercial and Military Applications

TABLE OF CONTENTS

Presentation	Page 3
Introduction	Page 4
Exploded View	Page 5
Part Numbering System	Page 6
D-EASY 12 feedthrough configuration	Page 7
D-EASY 01 feedthrough configuration	Page 8
D-EASY 02 feedthrough configuration	Page 9
D-EASY 03 feedthrough configuration	Page 10 and 11
D-EASY 04 feedthrough configuration	Page 12 and 13
D-EASY 05 feedthrough configuration	Page 14
Sealing Plugs	Page 15
Grommets K	Page 15
Grommets M	Page 16
Grommets P	Page 17 and 18
Masses	Page 19
Equivalences	Page 20
Tooling	Page 21
Torque Values, Preparation and Spacement	Page 22
Quick Wiring Procedure	Page 23

DEUTSCH Modular Composite Feedthrough

D-EASY Fast and Flexible, Reliable and Modular Solution



The D-EASY modular composite feedthrough from TE Connectivity (TE) was designed as the composite evolution of two-part metallic feedthrough components. Originally developed for aeronautical applications, the advantages of this product allowed it to be established in other markets and applications such as military vessels and vehicles. Saving installation time and reducing weight, the D-EASY modular feedthrough system is approved and standardized by leading aircraft manufacturers around the world for sealing electrical wires and harnesses systems.

FAST AND FLEXIBLE

- 96 times faster on final assembly line compared to the old potting version.
- Ability to add or remove cables
- Easy *in situ* installation and repair

RELIABLE

- Provides excellent seal integrity
- Repeatable sealing performance
- Reinforced fuel-resistant version available

MODULAR

- Wide range of housings, gland seals, grommets, and sealing plugs
- Choice of unshielded or shielded, with or without accessories
- Grommets for single and multi-wire harnesses and power feeders

More Choice

D-EASY feedthroughs are available in a variety of sizes and configurations to provide exceptional seal integrity in new and retrofit applications. The grommets can also be customized for new wiring configurations and retrofit applications.

Easy to Use

Featuring removable seal fittings for bundle and wire repairs in aerospace applications, D-EASY feedthroughs allow rework of the seal *in situ*, without wire removal, and are available with or without shielding protection and accessory interfaces.



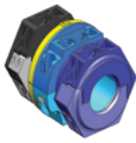
TE Components . . . TE Technology . . . TE Know-how . . .

AMP | AGASTAT | CII | HARTMAN | KILOVAC | MICRODOT | NANONICS | POLAMCO | Raychem
SEACON | Rochester | DEUTSCH

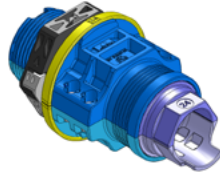
Empower Engineers to Solve Problems, Moving the World Forward.

INTRODUCTION

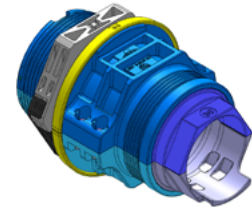
A complete range of composite feedthrough configuration that is a fast, flexible and modular solution.



D-EASY 12



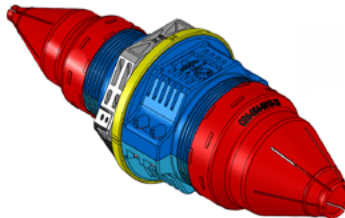
D-EASY 01



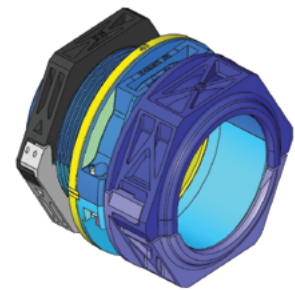
D-EASY 02



D-EASY 03



D-EASY 04



D-EASY 05

Specifications

MECHANICAL

- **Housing and Accessories:** Composite
- **Housing Metallization:** Nickel or non-metallized
- **Gasket:** Fluorosilicone
- **Gland Seal:** Fluorosilicone
- **Sealing Performance:** Leakage less than 1 l/min depending on bundle/cable type and/or grommet layout
- **Pressure Performance:** Consult TE

ENVIRONMENTAL

- **Temperature Range:** -55°C to +105°C
- **Salt Spray Resistance:** 500 hours
- **Environmental Compliance:** ABS1571 and BACS31T/U
- **Reinforced Fuel Resistance:** Consult TE

MASSES

Configuration (with Gland Seal)	D-EASY Version					
	12	01	02	03	04	05
Without Grommet	52 0.115	126 0.278	185 0.408	167 0.369	198 0.437	448 0.989
With Grommet	—	141 0.311	219 0.483	182 0.402	232 0.512	500 1.104

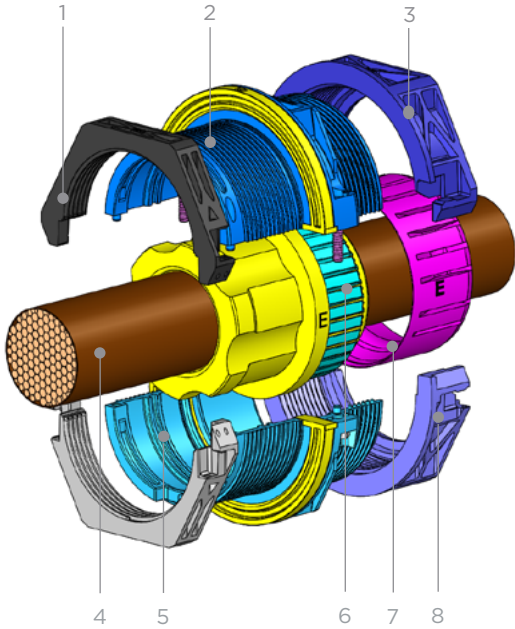
Masses: **grams** pounds

DIMENSIONS

	Housing External Ø	Panel Cutout Min. Ø	Panel Thickness	Bundle Diameter
D-EASY 12	43 1.693	24 to 24.3 0.945 to 0.957	2 to 10 0.079 to 0.394	2 to 12 0.079 to 0.472
D-EASY 01	64 2.520	38.41 to 39.57 1.512 to 1.558	2 to 19.3 0.079 to 0.760	2 to 22 0.079 to 0.866
D-EASY 02	79 3.110	57.02 to 58.30 2.245 to 2.295	2 to 19.3 0.079 to 0.760	15 to 35 0.590 to 1.378
D-EASY 03	64 2.520	38.40 to 38.70 1.512 to 1.524 Flat 37.5 to 37.8 Flat 1.476 to 1.488	2 to 8 0.079 to 0.315	2 to 22 0.079 to 0.866
D-EASY 04	79 3.110	57 to 57.30 2.244 to 2.256 Flat 55.5 to 55.8 Flat 2.185 to 2.197	2 to 8 0.079 to 0.315	15 to 35 0.590 to 1.378
D-EASY 05	101 3.976	75.44 to 76.97 2.970 to 3.030	2.54 to 19.3 0.100 to 0.760	26.4 to 45.7 1.039 to 1.800

Dimensions: **mm** inch

SINGLE WIRE APPLICATIONS

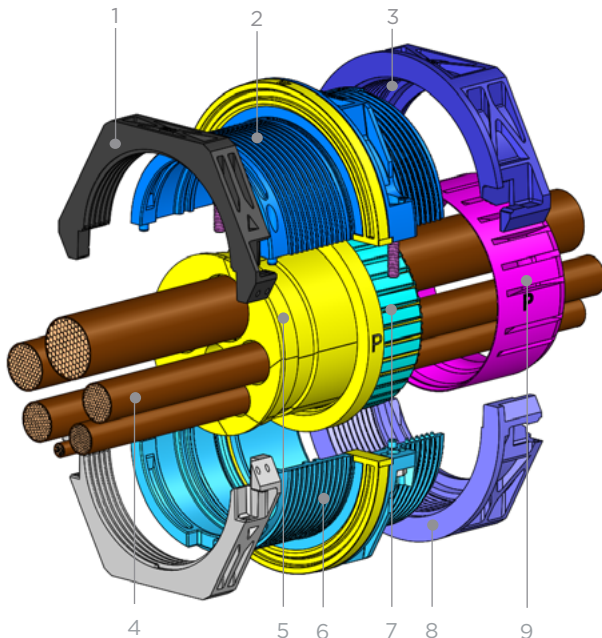


Order example:

Housing
D-EASY 05
+
Gland seal
054-8002-01

- 1 - Jam nut, half.
- 2 - Housing, half, upper.
- 3 - Compression nut, upper.
- 4 - Wire/cable.
- 5 - Housing, half, lower.
- 6 - Gland seal assembly.
- 7 - Bush.
- 8 - Compression nut, lower.

MULTI WIRE OR MULTI BUNDLE APPLICATIONS



Order example:

Housing
D-EASY 05
+
Gland seal
054-8020-05
+
Grommet
054-8005-15

- 1 - Jam nut, half.
- 2 - Housing, half, upper.
- 3 - Compression nut, upper.
- 4 - Wire or mix bundles.
- 5 - Grommet.
- 6 - Housing, half, lower.
- 7 - Gland seal assembly.
- 8 - Compression nut, lower.
- 9 - Bush.

PART NUMBERING SYSTEM

FOR UNSHIELDED APPLICATIONS

Housing, gland seal, and optional grommet part numbers will be ordered separately.

Bundle Dia. (Max.) (Before Preparation)	Part No.		Panel	
	Housing	Gland Seal Kit	Thickness	Min. Curvature
5 0.197	D-EASY 12	D-EASY 12 S 05	2 to 10 0.079 to 0.394	2500 100
12 0.472	D-EASY 12	D-EASY 12 S 12	2 to 10 0.079 to 0.394	
12 0.472	D-EASY 01	054-8000-00	2 to 19.3 0.079 to 0.760	
22 0.866	D-EASY 01	054-8000-01	2 to 19.3 0.079 to 0.760	
27 1.063	D-EASY 02	054-8001-00	2 to 19.3 0.079 to 0.760	
35 1.378	D-EASY 02	054-8001-01	2 to 19.3 0.079 to 0.760	
37 1.457	D-EASY 05	054-8002-00	2.54 to 19.3 0.100 to 0.760	
45.7 1.800	D-EASY 05	054-8002-01	2.54 to 19.3 0.100 to 0.760	

xx = Grommet see pages 15 - 18
Dimensions: **mm** inches

FOR SHIELDED APPLICATIONS

D-EASY supplied as a complete pressure seal system: gland seal and housing are supplied under a single part number. Consult TE for use of optional grommets.

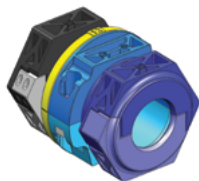
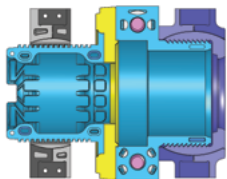
Bundle Dia. (Max.) (Before Preparation)	Part No.	Panel Thickness
12 0.472	D-EASY 03 A xx	2 to 8 0.079 to 0.315
22 0.866	D-EASY 03 B xx	
27 1.063	D-EASY 04 C xx	
35 1.378	D-EASY 04 D xx	

xx = Configuration code see pages 11 - 13
Dimensions: **mm** inches

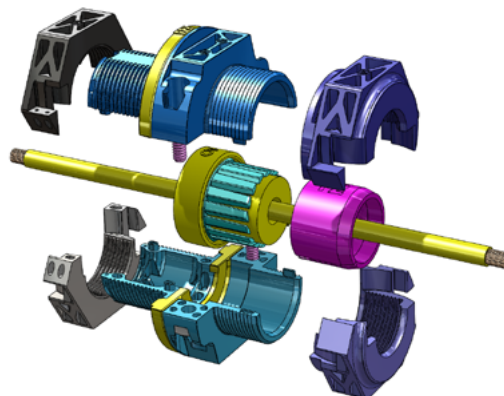
D-EASY 12 FEEDTHROUGH CONFIGURATION

HOUSING AND SEALING SYSTEM

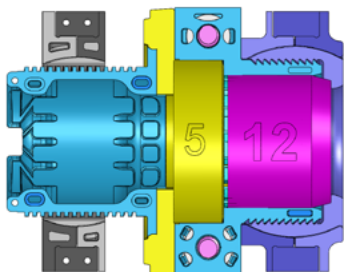
D-EASY 12 HOUSING WITHOUT SEALING SYSTEM



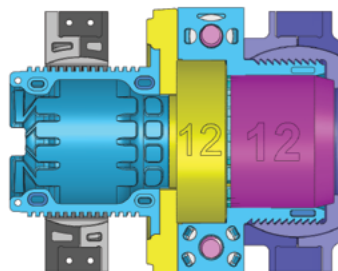
D-EASY 12 H



D-EASY 12 HOUSING WITH SEALING SYSTEM

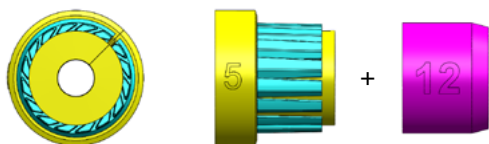


D-EASY 12 H 05



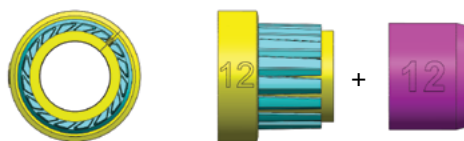
D-EASY 12 H 12

GLAND SEAL FOR WIRE HARNESS



D-EASY 12 S 05

Bundle dimensions \varnothing 5mm max.
(\varnothing 0.197 inch max.) before preparation.



D-EASY 12 S 12

Bundle dimensions \varnothing 12mm max.
(\varnothing 0.472 inch max.) before preparation.

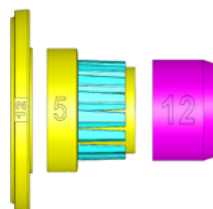
MAINTENANCE



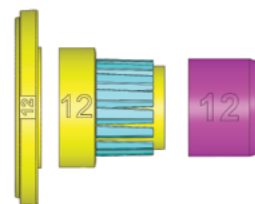
JAM NUT KIT
D-EASY 12 J



GLAND NUT KIT
D-EASY 12 G

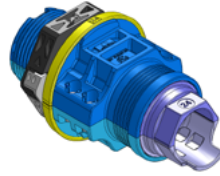
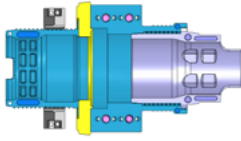


GLAND SEAL KIT
D-EASY 12 S 05 R



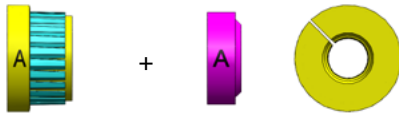
GLAND SEAL KIT
D-EASY 12 S 12 R

HOUSING DELIVERED WITHOUT SEAL SYSTEM

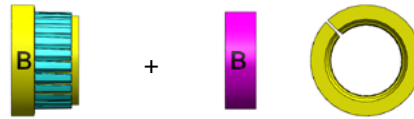


D-EASY 01

GLAND SEAL FOR SINGLE HARNESS

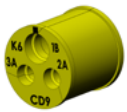


054-8000-00
 Ø 12mm.max. (Ø 0.472 inch max.)
 before preparation



054-8000-01
 Ø 22mm max. (Ø 0.866 inch max.)
 before preparation

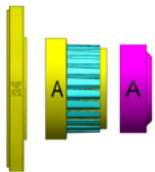
GLAND SEAL FOR GROMMET



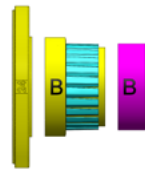
054-8020-01

See grommet details on page 15

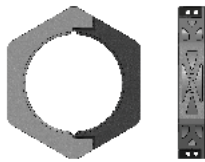
MAINTENANCE



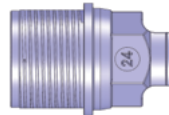
GLAND SEAL KIT
 054-0032-12



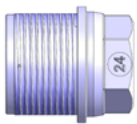
054-0032-22



JAM NUT KIT
 054-8015-03



GLAND NUT KIT CABLE TIE
 054-8016-03



GLAND NUT KIT
 054-8018-03



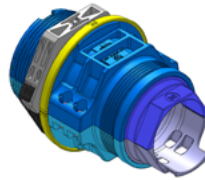
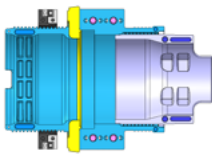
SHOULDERED JAM NUT
 ALUMINUM ALLOY
 054-8017-03



SHOULDERED JAM NUT
 COMPOSITE
 054-8062-03

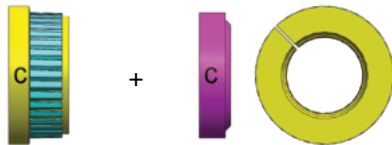
D-EASY 02 FEEDTHROUGH CONFIGURATION

HOUSING DELIVERED WITHOUT SEAL SYSTEM

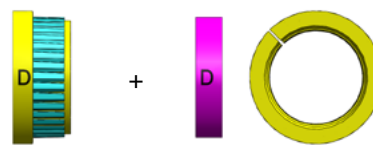


D-EASY 02

GLAND SEAL FOR SINGLE HARNESS

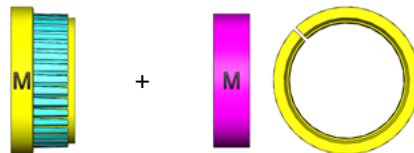
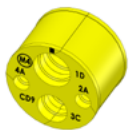


054-8001-00
Ø 27mm max. (Ø 1.063 inch max.)
before preparation



054-8001-01
Ø 35mm max. (Ø 1.378 inch max.)
before preparation

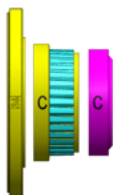
GLAND SEAL FOR GROMMET



054-8020-02

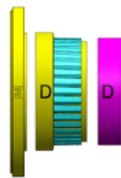
See grommet details on page 16

MAINTENANCE



GLAND SEAL KIT

054-0032-27

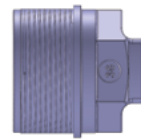


054-0032-35



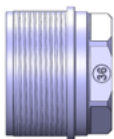
JAM NUT KIT

054-8015-04



GLAND NUT KIT CABLE TIE

054-8016-04



GLAND NUT KIT

054-8018-04*



SHOULDERED JAM NUT
ALUMINUM ALLOY

054-8017-04



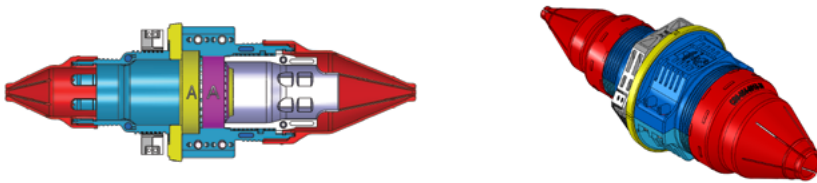
SHOULDERED JAM NUT
COMPOSITE

054-8062-04

*Consult TE

D-EASY 03 FEEDTHROUGH CONFIGURATION

HOUSING DELIVERED WITH SEAL SYSTEM



Example D-EASY 03 A 03

GLAND SEAL FOR SINGLE HARNESS

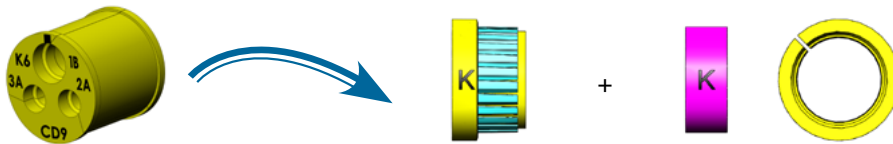


054-8000-00
Ø 12mm max. (Ø 0.472 inch max.)
before preparation



054-8000-01
Ø 22mm max. (Ø 0.866 inch max.)
before preparation

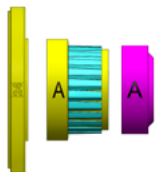
GLAND SEAL FOR GROMMET



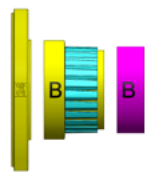
See grommet details on page 15

054-8020-01

MAINTENANCE



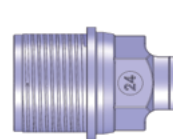
GLAND SEAL KIT
054-0032-12



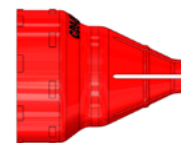
054-0032-22



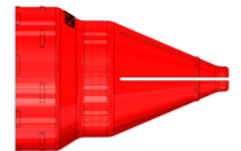
JAM NUT KIT
054-8015-03



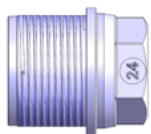
GLAND NUT KIT CABLE TIE
054-8016-03



CAP
054-0018-20



CAP
054-0018-28



GLAND NUT KIT
054-8018-03



SHOULDERED JAM NUT
ALUMINUM ALLOY
054-8017-03



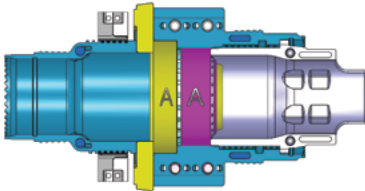
SHOULDERED JAM NUT
COMPOSITE
054-8062-03

GLAND SEAL FOR SINGLE HARNESS

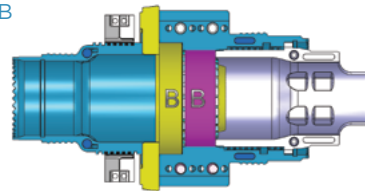
**GLAND SEAL
A**

**GLAND SEAL
B**

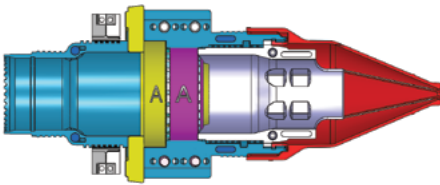
D-EASY 03 A



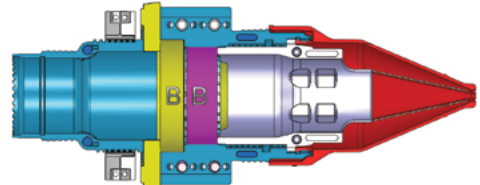
D-EASY 03 B



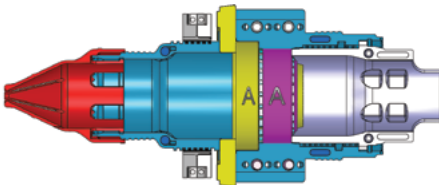
D-EASY 03 A 01



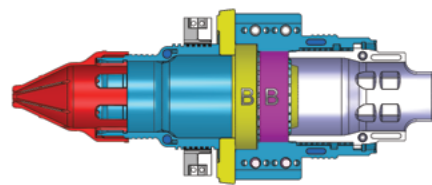
D-EASY 03 B 01



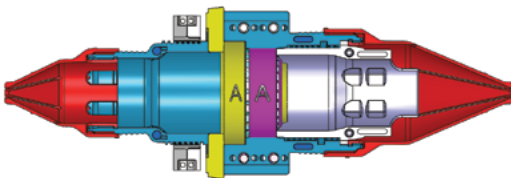
D-EASY 03 A 02



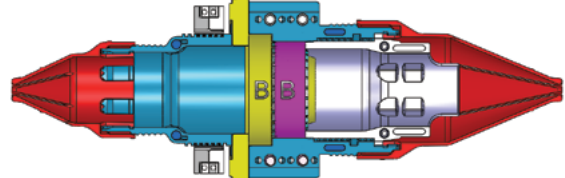
D-EASY 03 B 02



D-EASY 03 A 03

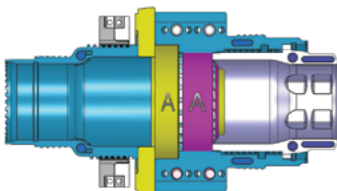


D-EASY 03 B 03



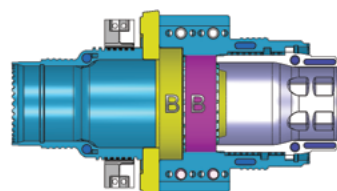
D-EASY 03 A 05

Gland nut without cable tie.



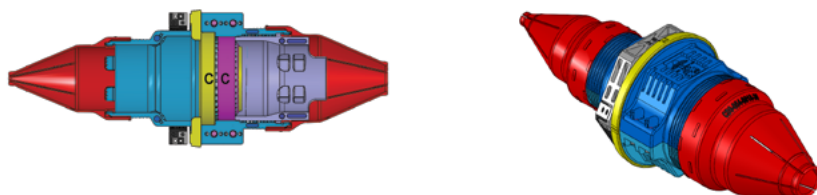
D-EASY 03 B 05

Gland nut without cable tie.



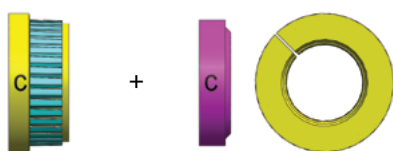
Other configurations, consult TE.

HOUSING DELIVERED WITH SEAL SYSTEM



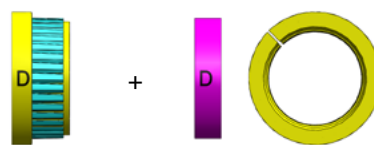
Example D-EASY 04 C 03

GLAND SEAL FOR SINGLE HARNESS



054-8001-00

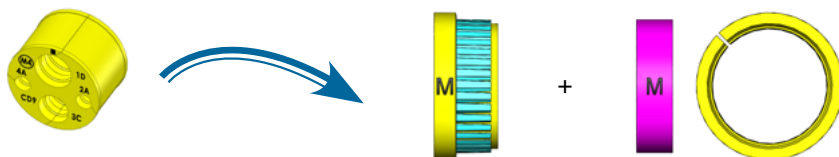
Ø 27mm max. (Ø 1.063 inch max.)
before preparation



054-8001-01

Ø 35mm max. (Ø 1.378 inch max.)
before preparation

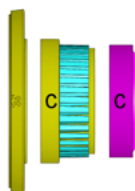
GLAND SEAL FOR GROMMET



054-8020-02

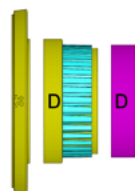
See grommet details on page 16

MAINTENANCE



GLAND SEAL KIT

054-0032-27

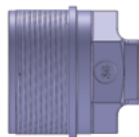


054-0032-35



JAM NUT KIT

054-8015-04



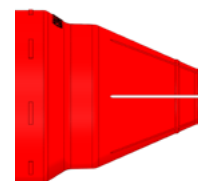
GLAND NUT KIT CABLE TIE

054-8016-04



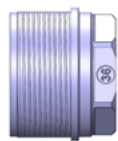
CAP

054-0018-28



CAP

054-0018-36



GLAND NUT KIT

054-8018-04*



SHOULDERED JAM NUT
ALUMINUM ALLOY

054-8017-04



SHOULDERED JAM NUT
COMPOSITE

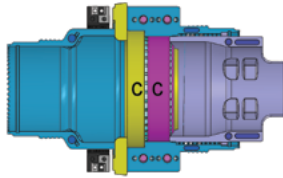
054-8062-04

*Consult TE

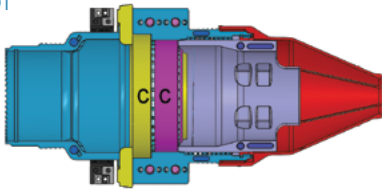
GLAND SEAL FOR SINGLE HARNESS

GLAND SEAL C

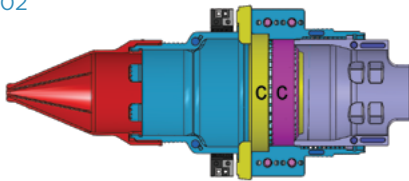
D-EASY 04 C



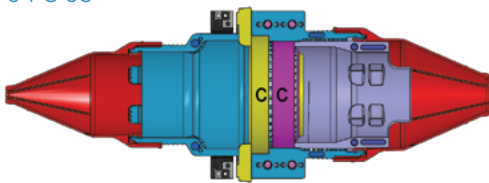
D-EASY 04 C 01



D-EASY 04 C 02

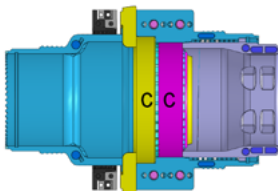


D-EASY 04 C 03



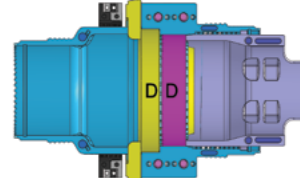
D-EASY 04 C 05

Consult TE for gland nut without cable tie.

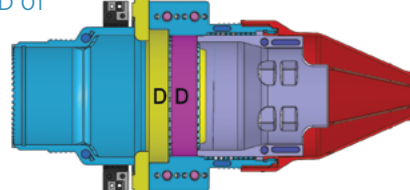


GLAND SEAL D

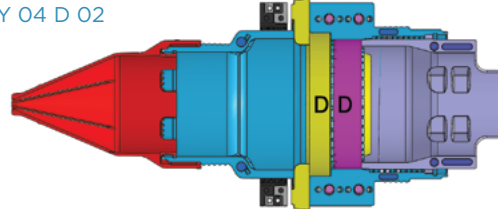
D-EASY 04 D



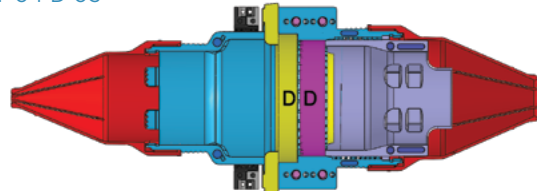
D-EASY 04 D 01



D-EASY 04 D 02

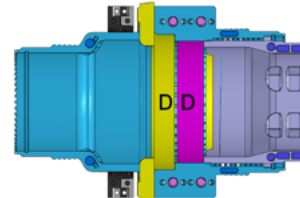


D-EASY 04 D 03



D-EASY 04 D 05

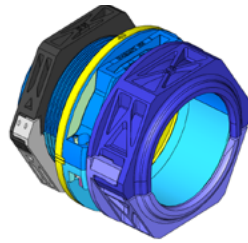
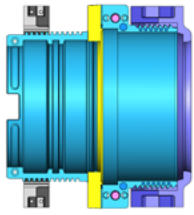
Consult TE for gland nut without cable tie.



Other configurations, consult TE.

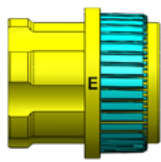
D-EASY 05 FEEDTHROUGH CONFIGURATION

HOUSING DELIVERED WITHOUT SEAL SYSTEM



D-EASY 05

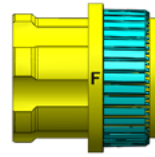
GLAND SEAL FOR SINGLE HARNESS



+



054-8002-00
Ø 37 mm max. (Ø 1.457 inch max.)
before preparation

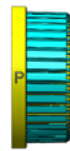
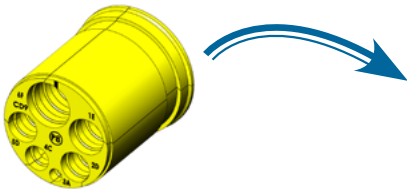


+



054-8002-01
Ø 45,70 mm max. (Ø 1.799 inch max.)
before preparation

GLAND SEAL FOR GROMMET



+



See grommet details on page 17

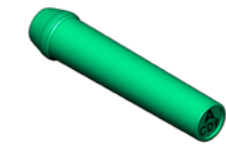
054-8020-05

MAINTENANCE

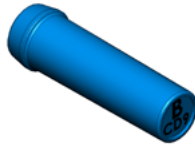
Consult TE.

SEALING PLUGS AND GROMMETS K

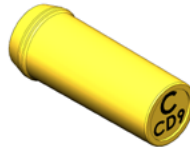
SEALING PLUGS



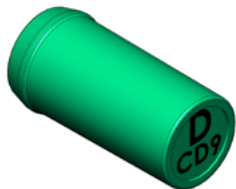
054-0053-01



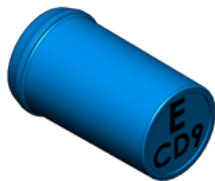
054-0053-02



054-0053-03



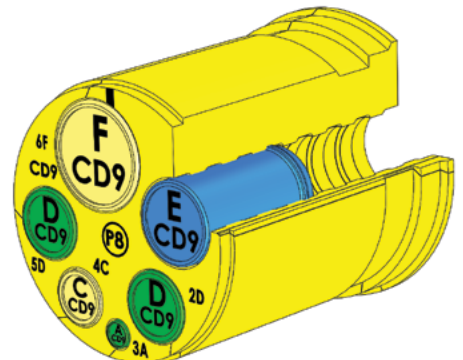
054-0053-04



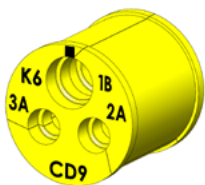
054-0053-05



054-0053-06



APPLICABLE D-EASY 01 & D-EASY 03 GROMMETS TYPE K



Isometric view
Other grommets, consult TE.



054-8003-01



054-8003-02



054-8003-03



054-8003-04



054-8003-05



054-8003-06



054-8003-07



054-8003-10



054-8003-11

K GROMMETS FOR DISCRETE WIRE

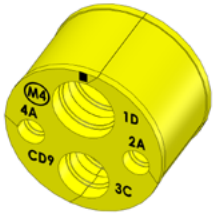
Grommet	No. of Wires	Wire Diameter
K1	1	15.2 to 16.2 0.599 to 0.639
K2	2	8.0 to 9.6 0.315 to 0.378
K3	1	12.4 to 13.5 0.490 to 0.530
K4	1	9.0 to 9.6 0.356 to 0.378
K5	1	12.3 to 13.1 0.485 to 0.515
K7	2	8.0 to 9.0 0.314 to 0.354
K10	1	12.6 to 13.5 0.497 to 0.531

K GROMMETS FOR WIRE BUNDLES

Grommet	No. of Bundles	Bundle Diameter (After Preparation)
K6	1 (Size B)	7.9 to 9.5 0.310 to 0.375
	2 (Size A)	4.7 to 6.35 0.185 to 0.250
K11	1	6.7 to 7.7 0.264 to 0.303
	1	8.5 to 9.5 0.335 to 0.374

Dimensions: mm inches

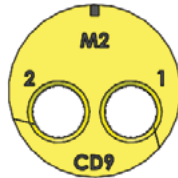
APPLICABLE D-EASY 02 & D-EASY 04 GROMMETS TYPE M



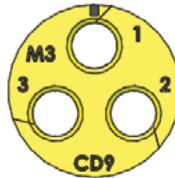
Isometric view



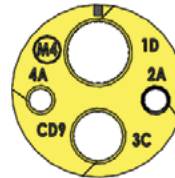
054-8004-01



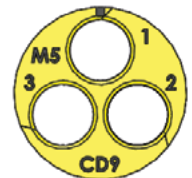
054-8004-02



054-8004-03



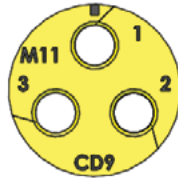
054-8004-04



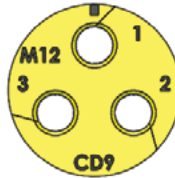
054-8004-05



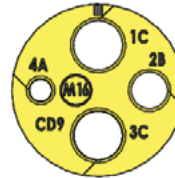
054-8004-10



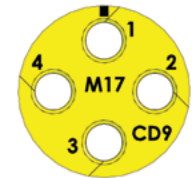
054-8004-11



054-8004-12



054-8004-16



054-8004-17

Other grommets, consult TE.

M GROMMETS FOR DISCRETE WIRE

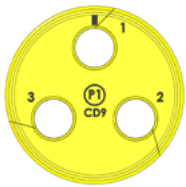
Grommet	No. of Wires	Wire Diameter
M1	3	12.7 to 14 0.501 to 0.553
M2	2	12.4 to 13.5 0.490 to 0.530
M3	3	11.1 to 12.4 0.437 to 0.487
M5	3	13.7 to 15 0.540 to 0.590
M10	2	11.9 to 12.7 0.469 to 0.501
M11	3	9.9 to 10.7 0.389 to 0.421
M12	3	9 to 9.9 0.355 to 0.390
M17	4	9 to 9.9 0.355 to 0.390

Dimensions: **mm** inches

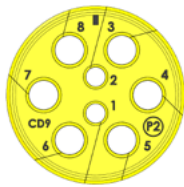
M GROMMETS FOR WIRE BUNDLES

Grommet	No. of Bundles	Bundle Diameter (After Preparation)
M4	1 (Size C)	11 to 12.7 0.435 to 0.500
	1 (Size D)	14.2 to 15.9 0.560 to 0.625
	2 (Size A)	4.7 to 6.35 0.185 to 0.250
M16	1 (Size A)	4.7 to 6.35 0.185 to 0.250
	1 (Size B)	7.9 to 9.5 0.310 to 0.375
	2 (Size C)	11 to 12.7 0.435 to 0.500

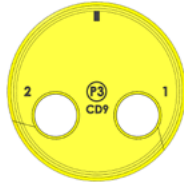
APPLICABLE D-EASY 05 GROMMETS TYPE P



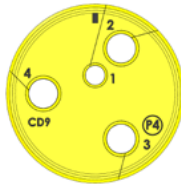
054-8005-01



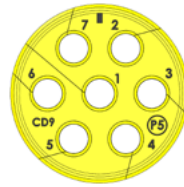
054-8005-02



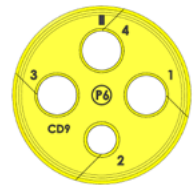
054-8005-03



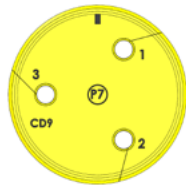
054-8005-04



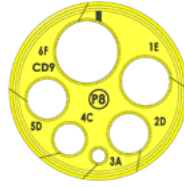
054-8005-05



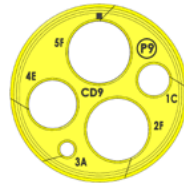
054-8005-06



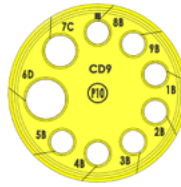
054-8005-07



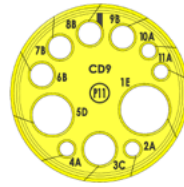
054-8005-08



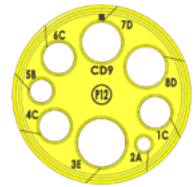
054-8005-09



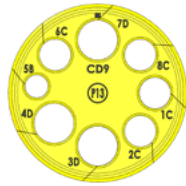
054-8005-10



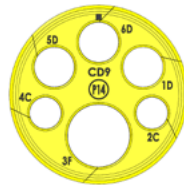
054-8005-11



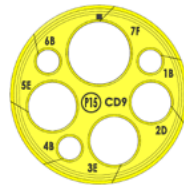
054-8005-12



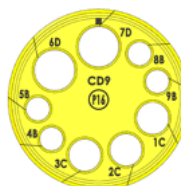
054-8005-13



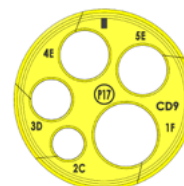
054-8005-14



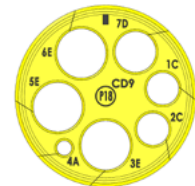
054-8005-15



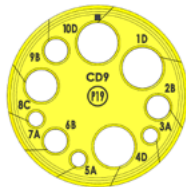
054-8005-16



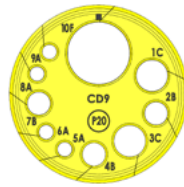
054-8005-17



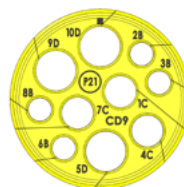
054-8005-18



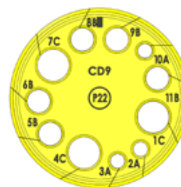
054-8005-19



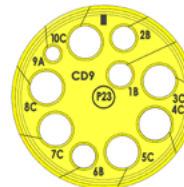
054-8005-20



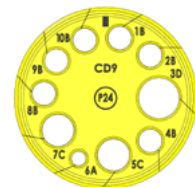
054-8005-21



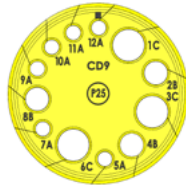
054-8005-22



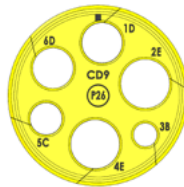
054-8005-23



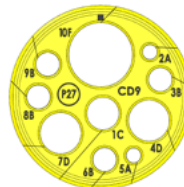
054-8005-24



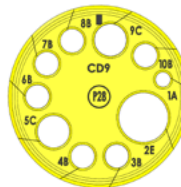
054-8005-25



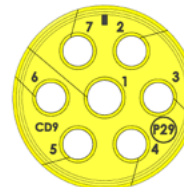
054-8005-26



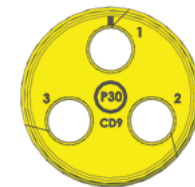
054-8005-27



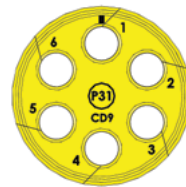
054-8005-28



054-8005-29



054-8005-30



054-8005-31

For dimension of harness before and after preparation, see chart page 22
Other grommets, consult TE.

GROMMETS P

P GROMMETS FOR DISCRETE WIRE

Grommet	No. of Wires	Wire Diameter
P1	3	14.1 - 15.7 / 0.556 - 0.620
P2	2	8 - 9 / 0.314 - 0.354
	6	11.1 - 12.4 / 0.437 - 0.487
P3	2	15.2 - 16.2 / 0.599 - 0.639
P4	1	8 - 9 / 0.314 - 0.354
	3	11.1 - 12.4 / 0.437 - 0.487
P5	7	11.1 - 12.4 / 0.437 - 0.487
P6	1	11 - 11.8 / 0.435 - 0.465
	3	13.7 - 15 / 0.540 - 0.590
P7	3	7.32 - 7.82 / 0.288 - 0.308
P29	1	12.7 - 14 / 0.500 - 0.550
	6	11.1 - 12.4 / 0.437 - 0.487
P30	3	15.3 - 17 / 0.604 - 0.670
P31	6	12.45 - 13.46 / 0.490 - 0.530

P GROMMETS FOR WIRE BUNDLES

Grommet	Bundle Size Diameter (After Preparation)/Number of Bundles					
	Size A 4.7 - 6.35 0.185 - 0.250	Size B 7.9 - 9.5 0.310 - 0.375	Size C 11.0 - 12.7 0.435 - 0.500	Size D 14.2 - 15.9 0.560 - 0.625	Size E 17.4 - 19.1 0.685 - 0.750	Size F 22.5 - 24.1 0.885 - 0.950
P8	1		1	2	1	1
P9	1		1		1	2
P10		7	1	1		
P11	4	4	1	1	1	
P12	1	1	3	2	1	
P13		1	4	3		
P14			2	3		1
P15		3		1	2	1
P16		4	3	2		
P17			1	1	2	1
P18	1		2	1	3	
P19	3	3	1	3		
P20	4	3	2			1
P21		4	3	3		
P22	3	5	3			
P23	1	3	6			
P24	1	6	2	1		
P25	6	3	3			
P26		1	1	2	2	
P27	2	4	1	2		1
P28	1	6	2		1	

Dimensions: **mm** inches

MASSES

Reference	Mass (g)	Mass (lbs)
D-EASY 01	110	0.243
D-EASY 02	150	0.331
D-EASY 03 A	177	0.390
D-EASY 03 A 01	190	0.419
D-EASY 03 A 02	183	0.403
D-EASY 03 A 03	196	0.432
D-EASY 03 A 05	175	0.386
D-EASY 03 B	167	0.368
D-EASY 03 B 01	180	0.397
D-EASY 03 B 02	173	0.381
D-EASY 03 B 03	186	0.410
D-EASY 03 B 05	165	0.364
D-EASY 04 C	213	0.470
D-EASY 04 C 01	230	0.507
D-EASY 04 C 02	226	0.498
D-EASY 04 C 03	243	0.536
D-EASY 04 C 05	210	0.463
D-EASY 04 D	198	0.437
D-EASY 04 D 01	215	0.474
D-EASY 04 D 02	211	0.465
D-EASY 04 D 03	228	0.503
D-EASY 04 D 05	195	0.430
D-EASY 05	244	0.538
D-EASY 05 L 01	266	0.586
D-EASY 12 G	10	0.022
D-EASY 12 H	44	0.097
D-EASY 12 H 05	56	0.123
D-EASY 12 H 12	52	0.115
D-EASY 12 J	8	0.018
D-EASY 12 S 05	12	0.026
D-EASY 12 S 05 R	13	0.029
D-EASY 12 S 12	8	0.018
D-EASY 12 S 12 R	9	0.020
054-0018-20	6	0.013
054-0018-28	13	0.029
054-0018-36	17	0.037

Reference	Mass (g)	Mass (lbs)
054-0032-12	32	0.071
054-0032-22	22	0.049
054-0032-27	50	0.110
054-0032-35	35	0.077
054-0053-01	1	0.002
054-0053-02	2	0.004
054-0053-03	4	0.009
054-0053-04	6	0.013
054-0053-05	8	0.018
054-0053-06	12	0.026
054-8000-00	27	0.060
054-8000-01	16	0.035
054-8001-00	44	0.097
054-8001-01	35	0.077
054-8002-00	274	0.604
054-8002-01	204	0.450
054-8003-01	12	0.026
054-8003-02	17	0.037
054-8003-03	15	0.033
054-8003-04	18	0.040
054-8003-05	15	0.033
054-8003-06	16	0.035
054-8003-07	18	0.040
054-8003-11	17	0.037
054-8004-01	32	0.071
054-8004-02	37	0.082
054-8004-03	35	0.077
054-8004-04	34	0.075
054-8004-05	29	0.064
054-8004-17	39	0.086
054-8005-01	206	0.454
054-8005-02	208	0.459
054-8005-03	209	0.461
054-8005-04	221	0.487
054-8005-05	209	0.461
054-8005-06	208	0.459
054-8005-07	222	0.489

Reference	Mass (g)	Mass (lbs)
054-8005-08	172	0.379
054-8005-09	171	0.377
054-8005-10	200	0.441
054-8005-11	191	0.421
054-8005-12	181	0.399
054-8005-13	175	0.386
054-8005-14	172	0.379
054-8005-15	161	0.355
054-8005-16	184	0.406
054-8005-17	170	0.375
054-8005-19	189	0.417
054-8005-20	175	0.386
054-8005-21	173	0.381
054-8005-22	192	0.423
054-8005-23	166	0.366
054-8005-23	184	0.406
054-8005-24	185	0.408
054-8005-25	194	0.428
054-8005-26	177	0.390
054-8005-27	164	0.362
054-8005-28	177	0.390
054-8005-29	210	0.463
054-8005-30	207	0.456
054-8005-31	212	0.468
054-8014-20	40	0.088
054-8015-03	13	0.029
054-8015-04	15	0.033
054-8017-03	45	0.099
054-8017-04	53	0.117
054-8018-03	17	0.037
054-8018-04	27	0.060
054-8020-01	14	0.031
054-8020-02	21	0.046
054-8020-05	77	0.170
054-8061-29	247	0.545
054-8062-03	20	0.044
054-8062-04	23	0.051

EQUIVALENCES

ABS1571 TO TE PART NUMBER CROSS REFERENCE

ABS1571	TE
ABS1571-01A	D-EASY 03 A
ABS1571-01A01	D-EASY 03 A 01
ABS1571-01A02	D-EASY 03 A 02
ABS1571-01A03	D-EASY 03 A 03
ABS1571-01A05	D-EASY 03 A 05
ABS1571-01B	D-EASY 03 B
ABS1571-01B01	D-EASY 03 B 01
ABS1571-01B02	D-EASY 03 B 02
ABS1571-01B03	D-EASY 03 B 03
ABS1571-01B05	D-EASY 03 B 05
ABS1571-02C	D-EASY 04 C
ABS1571-02C01	D-EASY 04 C 01

ABS1571	TE
ABS1571-02C02	D-EASY 04 C 02
ABS1571-02C03	D-EASY 04 C 03
ABS1571-02C05	D-EASY 04 C 05
ABS1571-02D	D-EASY 04 D
ABS1571-02D01	D-EASY 04 D 01
ABS1571-02D02	D-EASY 04 D 02
ABS1571-02D03	D-EASY 04 D 03
ABS1571-02D05	D-EASY 04 D 05
ABS1571-20-24	054-8014-20
ABS1571-20	054-0018-20
ABS1571-28	054-0018-28
ABS1571-36	054-0018-36

ABS1571	TE
ABS1571A	054-0032-12
ABS1571B	054-0032-22
ABS1571C	054-0032-27
ABS1571D	054-0032-35
ABS1571G03	054-8018-03
ABS1571G04	054-8018-04
ABS1571N01	054-8015-03
ABS1571N02	054-8015-04
ABS1571-N03	054-8017-03
ABS1571-N04	054-8017-04
ABS1571-N05	054-8062-03
ABS1571-N06	054-8062-04

BACS31 TO TE PART NUMBER CROSS REFERENCE

BACS31	TE
BACS31T24H	D-EASY 01
BACS31T36H	D-EASY 02
BACS31T48H	D-EASY 05
BACS31T48H1*	D-EASY 05 L 01*
BACS31U24GA	054-8000-00
BACS31U24GB	054-8000-01
BACS31U24GK	054-8020-01
BACS31U24SK1	054-8003-01
BACS31U24SK2	054-8003-02
BACS31U24SK3	054-8003-03
BACS31U24SK4	054-8003-04
BACS31U24SK5	054-8003-05
BACS31U24SK6	054-8003-06
BACS31U24SK7	054-8003-07
BACS31U36GC	054-8001-00
BACS31U36GD	054-8001-01
BACS31U36GM	054-8020-02
BACS31U36SM1	054-8004-01
BACS31U36SM2	054-8004-02
BACS31U36SM3	054-8004-03
BACS31U36SM4	054-8004-04

BACS31	TE
BACS31U36SM5	054-8004-05
BACS31U48GE1	054-8002-00
BACS31U48GF1	054-8002-01
BACS31U48GP1	054-8020-05
BACS31U48SP1	054-8005-01
BACS31U48SP2	054-8005-02
BACS31U48SP3	054-8005-03
BACS31U48SP4	054-8005-04
BACS31U48SP5	054-8005-05
BACS31U48SP6	054-8005-06
BACS31U48SP7	054-8005-07
BACS31U48SP8	054-8005-08
BACS31U48SP9	054-8005-09
BACS31U48SP10	054-8005-10
BACS31U48SP11	054-8005-11
BACS31U48SP12	054-8005-12
BACS31U48SP13	054-8005-13
BACS31U48SP14	054-8005-14
BACS31U48SP15	054-8005-15
BACS31U48SP16	054-8005-16
BACS31U48SP17	054-8005-17

BACS31	TE
BACS31U48SP18	054-8005-18
BACS31U48SP19	054-8005-19
BACS31U48SP20	054-8005-20
BACS31U48SP21	054-8005-21
BACS31U48SP22	054-8005-22
BACS31U48SP23	054-8005-23
BACS31U48SP24	054-8005-24
BACS31U48SP25	054-8005-25
BACS31U48SP26	054-8005-26
BACS31U48SP27	054-8005-27
BACS31U48SP28	054-8005-28
BACS31U48SP29	054-8005-29
BACS31U48SP30	054-8005-30
BACS31U48SP31	054-8005-31
BACS31U48ST29*	054-8061-29
BACS31UP1	054-0053-01
BACS31UP2	054-0053-02
BACS31UP3	054-0053-03
BACS31UP4	054-0053-04
BACS31UP5	054-0053-05
BACS31UP6	054-0053-06

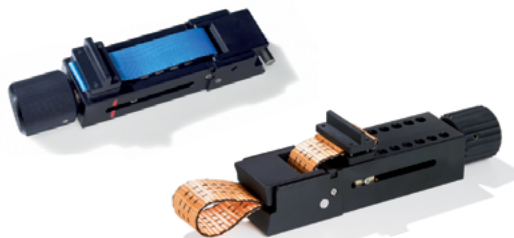
*For panels up to 32 mm (1.250) thick.

Consult TE for additional cross reference information.

TOOLING



Rotation retainer tool



Compression strap wrench (2 sizes)



Crowfoot wrench

Description	D-EASY Size	Tools size	Part number tools	Suppliers
Wrench, Allen (housing hardwares)	12 01 / 03 02 / 04 05	7/64 7/64 7/64 9/64	Standard	Free source
Rotation retainer tool (for housing flats)	12 01 02 03 04 05	1-7/16 1-13/16 2-3/8 1-13/16 2-3/8 3-1/2	Fork wrench Fork wrench Fork wrench 057-0898-00 057-0929-05	Free source Free source Free source TE or Free source TE or Free source
Crowfoot wrench, Gland nut	12 01 / 03 02 / 04 05	1-7/16 1-1/8 1-5/8 3-1/2	AN850823B 057-0901-03 057-0902-04 057-0919-05	Free source TE TE TE or Free source
Crowfoot wrench Jam nut	12 01 / 03 02 / 04 05	1-7/16 2" 2-5/8 3-1/2	AN850823B AN850832B AN850842B 057-0919-05	Free source Free source Free source TE or Free source
Compression strap wrench	12 01 / 02 03 / 04 05 05*	- - - -	057-0750-00 or 057-0750-05*	TE

*If bundle diameter > Ø 37mm (Ø 1.450 inch) before preparation.

CONSUMABLES

Designation	Part number	Suppliers	DEUTSCH Proposal part number
Tape, Sealant	5313 dimension 1 x 8 mm	Free source	609-0031-XX * Consult TE
Tape, Silicone	67N	Free source	609-0032-XX * Consult TE
Metallic clamping strip	According to ASNE0805 - Free source		
Tie-rap	According to NSA935401-05 - Free source		

* XX = Number of coils in order.

TORQUE VALUES, PREPARATION AND SPACING

TORQUE VALUES

	Panel Nuts		Gland Nuts		Housing Screws	
	N.m	Ft.lbf	N.m	Ft.lbf	N.m	In.lbf
D-EASY 12	6	4.4	8	5.9	2	18
D-EASY 01	20	14.8	20	14.8	2	18
D-EASY 02	25	18.5	25	18.5	2	18
D-EASY 03	20	14.8	20	14.8	2	18
D-EASY 04	25	18.5	25	18.5	2	18
D-EASY 05	30	22.1	30	22.1	4	35

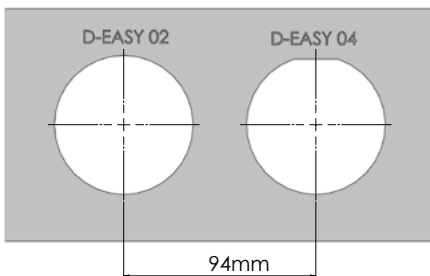
PREPARED BUNDLE DIAMETER IN GROMMET

After Preparation (Tape Overlapping)

Cavity Marking	Bundle Diameter Ø	
	Min.	Max.
A	4.7 0.185	6.35 0.250
B	7.9 0.310	9.50 0.375
C	11 0.435	12.70 0.500
D	14.2 0.560	15.90 0.625
E	17.4 0.685	19.10 0.750
F	22.5 0.885	24.10 0.950

Dimensions: **mm** inches

RECOMMENDED MINIMUM SPACING BETWEEN D-EASY FEEDTHROUGHS



	D-EASY 12	D-EASY 01	D-EASY 02	D-EASY 03	D-EASY 04	D-EASY 05
D-EASY 12	57 2.244	68 2.677	76 2.992	68 2.677	76 2.992	96 3.780
D-EASY 01	68 2.677	77 3.031	86 3.386	77 3.031	86 3.386	107 4.213
D-EASY 02	76 2.992	86 3.386	94 3.701	86 3.386	94 3.701	115 4.528
D-EASY 03	68 2.677	77 3.031	86 3.386	77 3.031	86 3.386	107 4.213
D-EASY 04	76 2.992	86 3.386	94 3.701	86 3.386	94 3.701	115 4.528
D-EASY 05	96 3.780	107 4.213	115 4.528	107 4.213	115 4.528	125 4.921

Dimensions: **mm** inches

TORQUE VALUES FOR CONFORMING TOOLS

Size	N.m	Ft.lbf
057-0750-00	4	3
057-0750-05	8	6

PREPARED BUNDLE DIAMETER IN GLAND SEAL

After Preparation (Tape Overlapping)

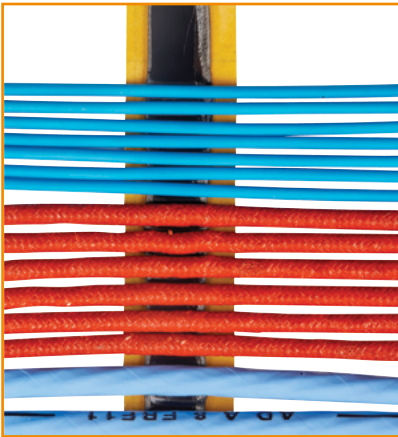
Gland Seal	Bundle Diameter Ø	
	Min.	Max.
5	5 0.197	7 0.276
12	12 0.472	14 0.551
A	12 0.472	14 0.551
B	22 0.866	24 0.945
C	27 1.063	29 1.142
D	35 1.378	37 1.457
E	37 1.457	39 1.535
F	46 1.811	48.5 1.909

Dimensions: **mm** inches

QUICK WIRING PROCEDURE

STEP 1:

Lays wires and cables on sealant.



STEP 2:

Form wire bundle with sealant into multi layer.



STEP 3:

Wrap wire bundle with self amalgamating tape.



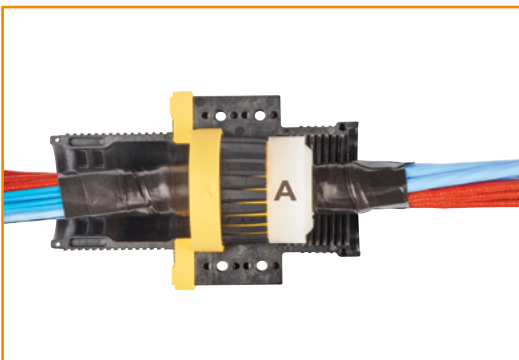
STEP 4:

Compress wire bundle with dedicated compression tool.



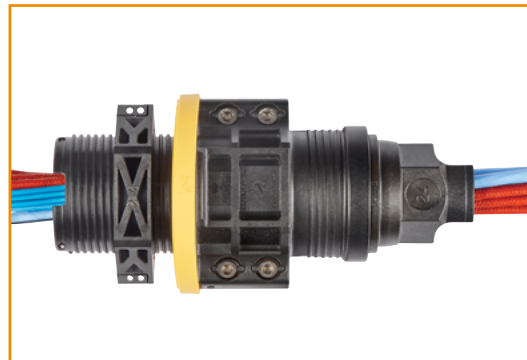
STEP 5:

Put into the housing the bundle with sealing system.



STEP 6:

Close and tighten the nuts.



Consult TE for the D-EASY wiring procedure

LET'S CONNECT

We make it easy to connect with our experts and are ready to provide all the support you need. Just call your local support number or visit www.te.com/industrial to chat with a Product Information Specialist.

Technical Support

te.com/support-center

North America	+1 800 522 6752	Asia Pacific	+86 400 820 6015
North America (Toll)	+1 717 986 7777	Japan	+81 044 844 8180
EMEA/South Africa	+800 0440 5100	Australia	+61 2 9554 2695
EMEA (Toll)	+31 73 624 6999	New Zealand	+64 (0) 9 634 4580
India (Toll-Free)	+800 440 5100		

te.com/d-easy

AMP, AGASTAT, CII, DEUTSCH, HARTMAN, KILOVAC, MICRODOT, NANONICS, POLAMCO, Raychem, SEACON, TE, TE Connectivity and the TE connectivity (logo) are trademarks of TE Connectivity. Other products, logos, and company names mentioned herein may be trademarks of their respective owners.

While TE Connectivity (TE) has made every reasonable effort to ensure the accuracy of the information herein, nothing herein constitutes any guarantee that such information is error-free, or any other representation, warranty or guarantee that the information is accurate, correct, reliable or current. The TE entity issuing this publication reserves the right to make any adjustments to the information contained herein at any time without notice. All implied warranties regarding the information contained herein, including, but not limited to, any implied warranties of merchantability or fitness for a particular purpose are expressly disclaimed. The dimensions herein are for reference purposes only and are subject to change without notice. Specifications are subject to change without notice.

Consult TE for the latest dimensions and design specifications.

© 2018 TE Connectivity All Rights Reserved.

1-1773870-6 09/18