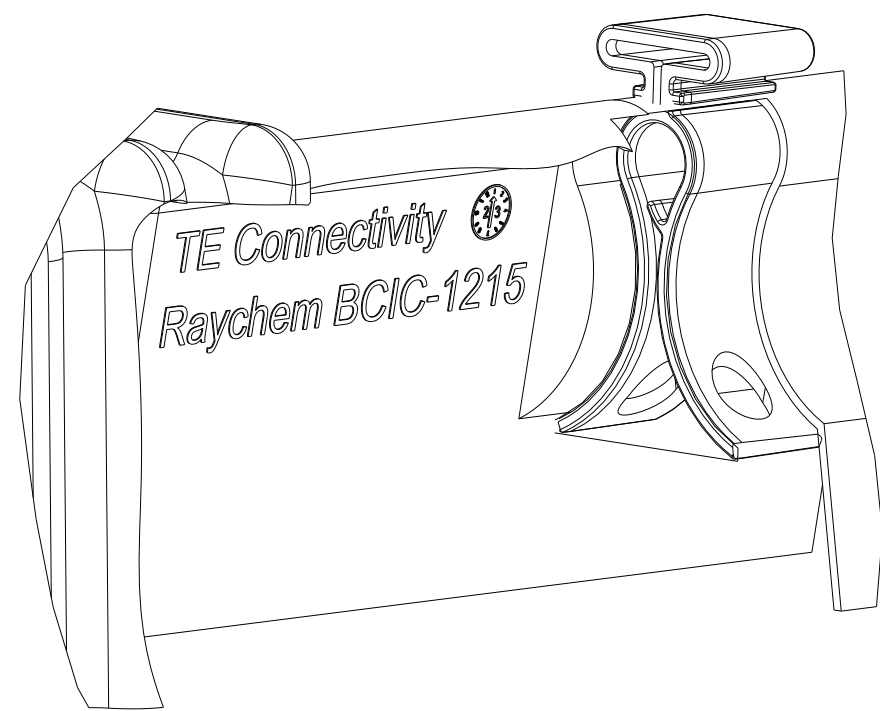
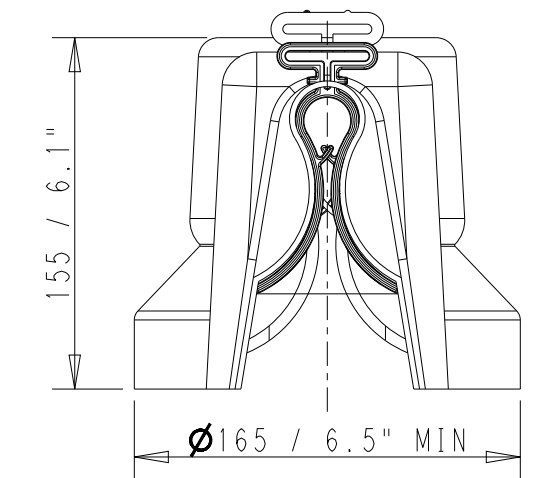
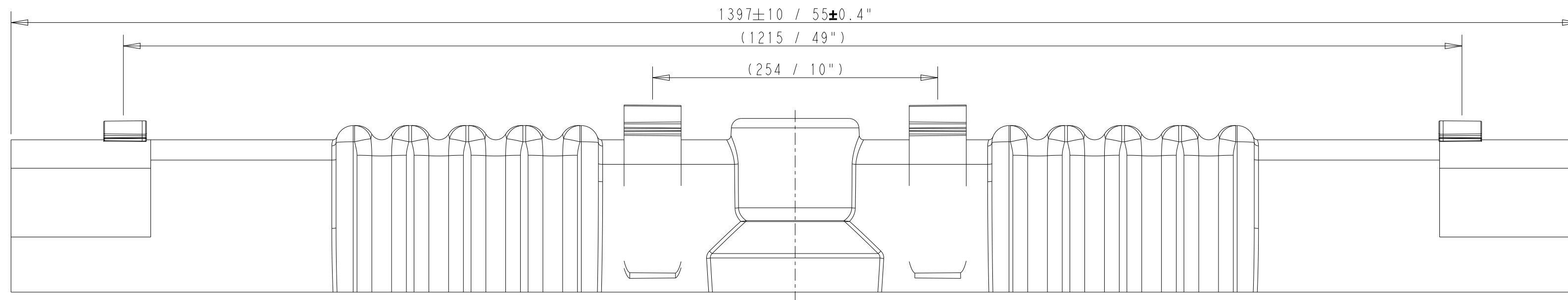
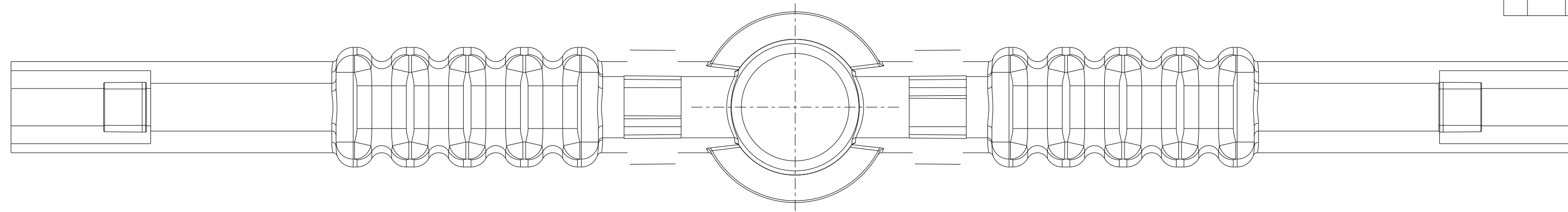
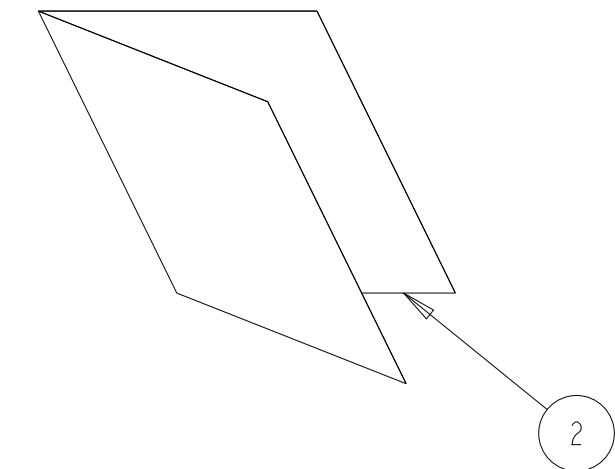
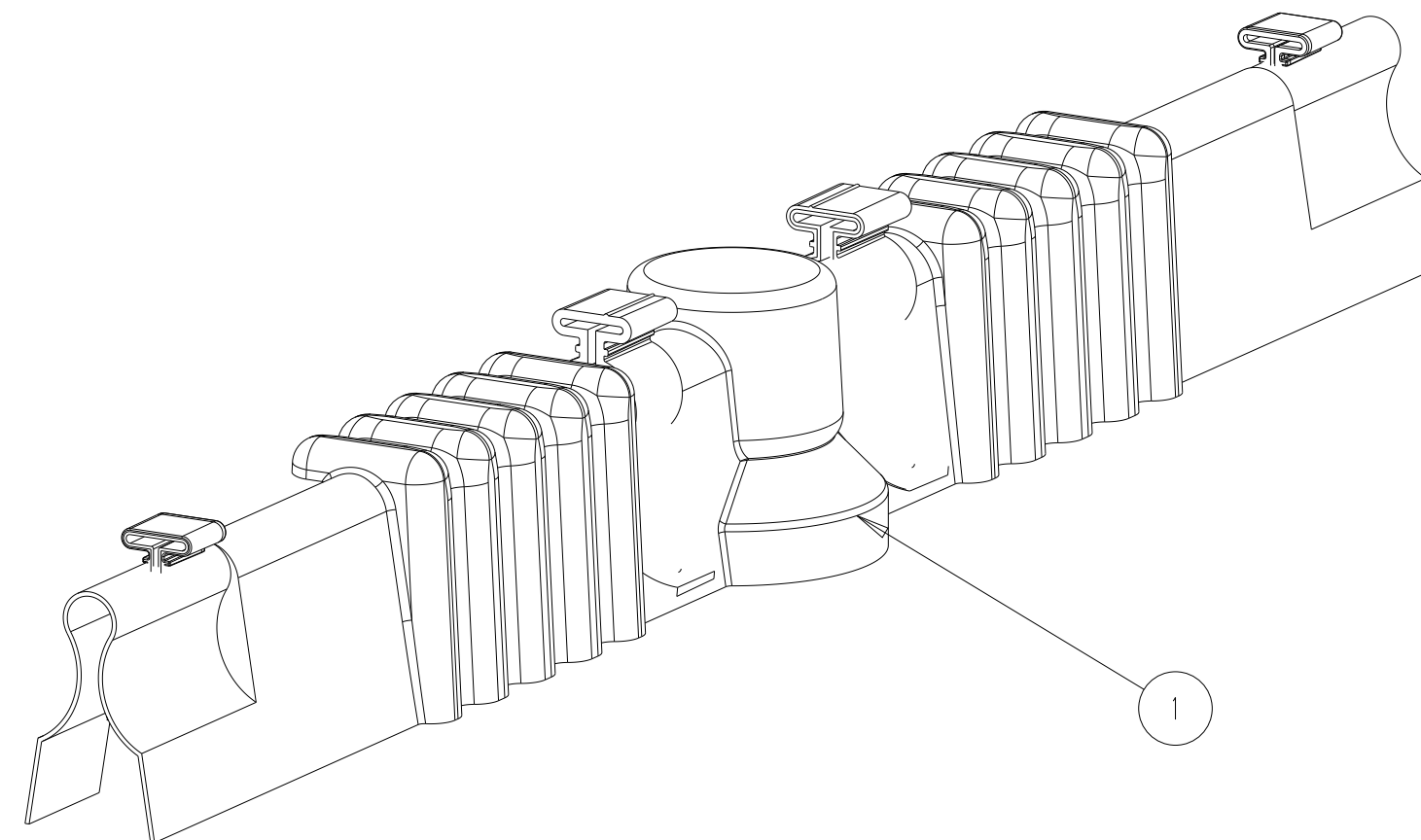


P	LTR	DESCRIPTION	DATE	DWN	APVD
A		ORIGINAL ISSUE	18DEC2023	JM	-



TE Connectivity  
Raychem BCIC-1215  
LOT# DIAL - yymm  
PRINTING EMBOSSED ON INSIDE OF PRODUCT AS SHOWN



NOTES: (UNLESS OTHERWISE SPECIFIED)  
MATERIAL: SEE TABLE  
WALL THICKNESS IS 2.5mm / 0.1" NOMINAL.  
TOLERANCES: ±3mm / 0.12" UNLESS OTHERWISE NOTED.  
FILLET/RADII: R6mm / 0.24" UNLESS NOTED.  
5mm FLANGE PERMISSIBLE ALL AROUND PART.  
COLD MARKS ARE ALLOWABLE AS LONG AS THE WALL THICKNESS IN THESE REGIONS MEETS REQUIREMENTS.

TCPN	DESCRIPTION	TCPN	DESCRIPTION		
CJ3751-000	BCIC-1215-3(B3)	CB1215-000	BCIC-1215(B15)		
ITEM #	DESCRIPTION	QTY	ITEM #	DESCRIPTION	QTY
1	BCIC-1215	3	1	BCIC-1215	15
2	EPP-3286-1/19	1	2	EPP-3286-1/19	1

THIS DRAWING IS A CONTROLLED DOCUMENT.

DIMENSIONS:	TOLERANCES UNLESS OTHERWISE SPECIFIED:
mm / inches	
	0 PLC ±
	1 PLC ±
	2 PLC ±
	3 PLC ±
	4 PLC ±
	ANGLES ±
	FINISH ±

MATERIAL: SEE NOTES

DWN: J. MULLIGAN 18DEC2023		NAME: BCIC-1215(Bxx)		
CHK: M. JAMES 18DEC2023		SEE TABLE		
APVD: I. BOND 18DEC2023		SIZE: A2	CAGE CODE: 00779	DRAWING NO: G-WAP-BCIC-0139-C
PRODUCT SPEC: -		RESTRICTED TO: -	SCALE: 3:10	SHEET 1 OF 1
APPLICATION SPEC: -	WEIGHT: -	REV: A		
CUSTOMER DRAWING				