

6	5				4	
PARAMETER	SPECIFICATION					
Antenna Model	VFQ69383B21JN-518L / VFQ69383W21JN-518L					
Number of Ports	4					
Port Configuration	2x- 3G/4G/ISM/CBRS (LTE/CELL)				1x - WiFi (WIFI)	
Frequency Bands, MHz	698-806	824-894	880-960	1690-3800	2400-2500	4900-6000
Peak Gain(*), Avg. dBi	0.2	0.6	1.1	3.8	2.4	6.4
Peak Gain(*), Max. dBi	1.2	1.1	1.8	7.4	3.1	7.0
VSWR(**), Avg	1.7	1.7	1.7	1.4	1.6	1.2
VSWR(**), Max	2.5	2.1	2.2	2.1	2	2
Isolation(**) LTE1 to LTE2 (dB)	-10	-12	-15	-18	-23	-37
Isolation(**) LTE1 to WIFI (dB)	-38	-37	-37	-14	-14	-35
Isolation(**) LTE2 to WFI (dB)	-43	-45	-45	-49	-60	-47
Isolation(**) WIFI to GNSS (dB)	-68	-72	-66	-54	-60	-54
Isolation(**) LTE1 to GNSS (dB)	-43	-42	-39	-28	-28	-39
Isolation(**) LTE2 to GNSS (dB)	-39	-44	-46	-50	-59	-54
Azimuth 3 dB Beamwidth	360°, Omnidirectional					
Nominal Impedance (Ohms)	50					
Polarization	Linear Vertical					
Max Power/port- Ambient 25°C(W)	30				10	

Notes:

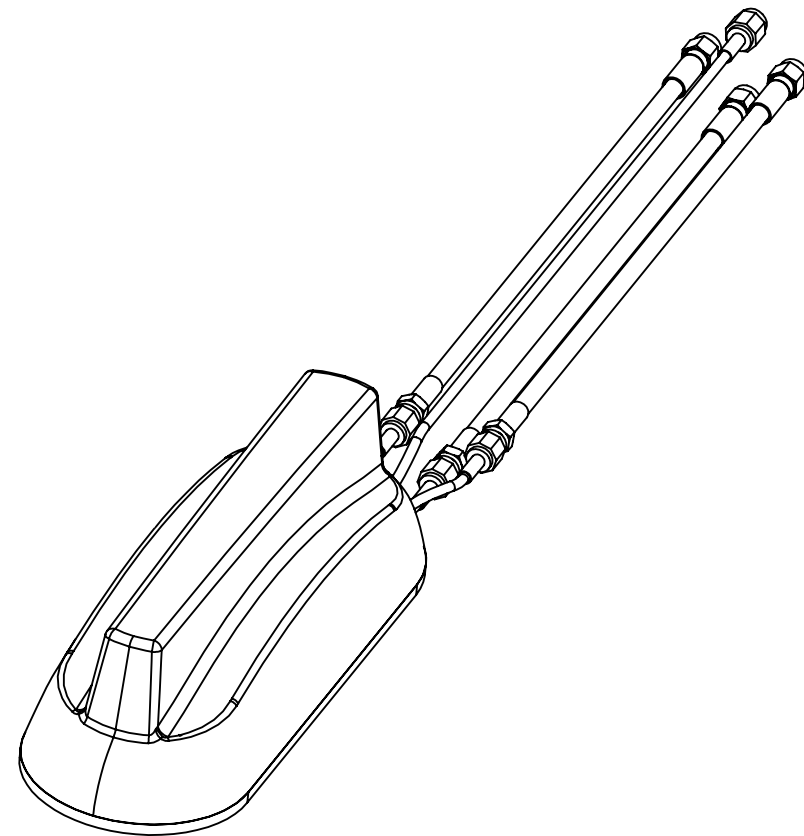
- (\*) This parameters is based on 1ft cable length & 1ft ground plane.
- (\*\*) This parameters is based on 17ft cable length & 1ft ground plane.
- Antenna specification is subjected to change according to the ground plane size.

GNSS SPECIFICATION			
PARAMETER	SPECIFICATION		
Frequency of Operation (MHz)	1559 - 1606		
Band	BEIDOU	GPS	GLONASS
Frequency Band (MHz)	1561.098 ±2.046	1575.42 ±1.023	1602 ±5
Antenna Gain (dBi)	3.3	4.6	4.8
LNA Gain Typ. @ room temp. (dBi)	28±3		
Noise Figure @ room temp., Max (dB)	≤ 2.5 @ 1575 MHz		
Max VSWR @ room temp.	≤ 2.0		
Polarization	RHCP		
Nominal Impedance	50 Ω		
Operating Supply Voltage (Vdc)	2.5 - 7.0		
Current Consumption, Max @ room temp mA)	8.5 ± 3 @ 3.0V		
ESD, Kv	± 2 (contact discharge) / ± 4 (air discharge)		
Out-of-band Signal Rejection Min @ room temp (dBc)	80 (@698-960MHz)	80 (@1428-2700 MHz)	70 (@4900-5800 MHz)
Input Max Power (dBm)	-10		
Cable Type	RG174		
Cable length, cm	518		
Connector	SMA,Male		

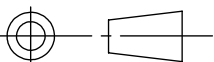
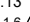
MECHANICAL SPECIFICATIONS	
Dimensions- L x W x H mm (inches)	179 x 63 x 48 mm (7.04 x 2.48 x 1.69)
Weight, kg (lbs)	0.93 kg (2.1 lbs)
Mounting	P- Mount
Cable Type	LMR 100- pigtails, LMR 195- jumper cables
Color	Black or White
Radome Material	PC, UL94-V0
Baseplate Material	Aluminum

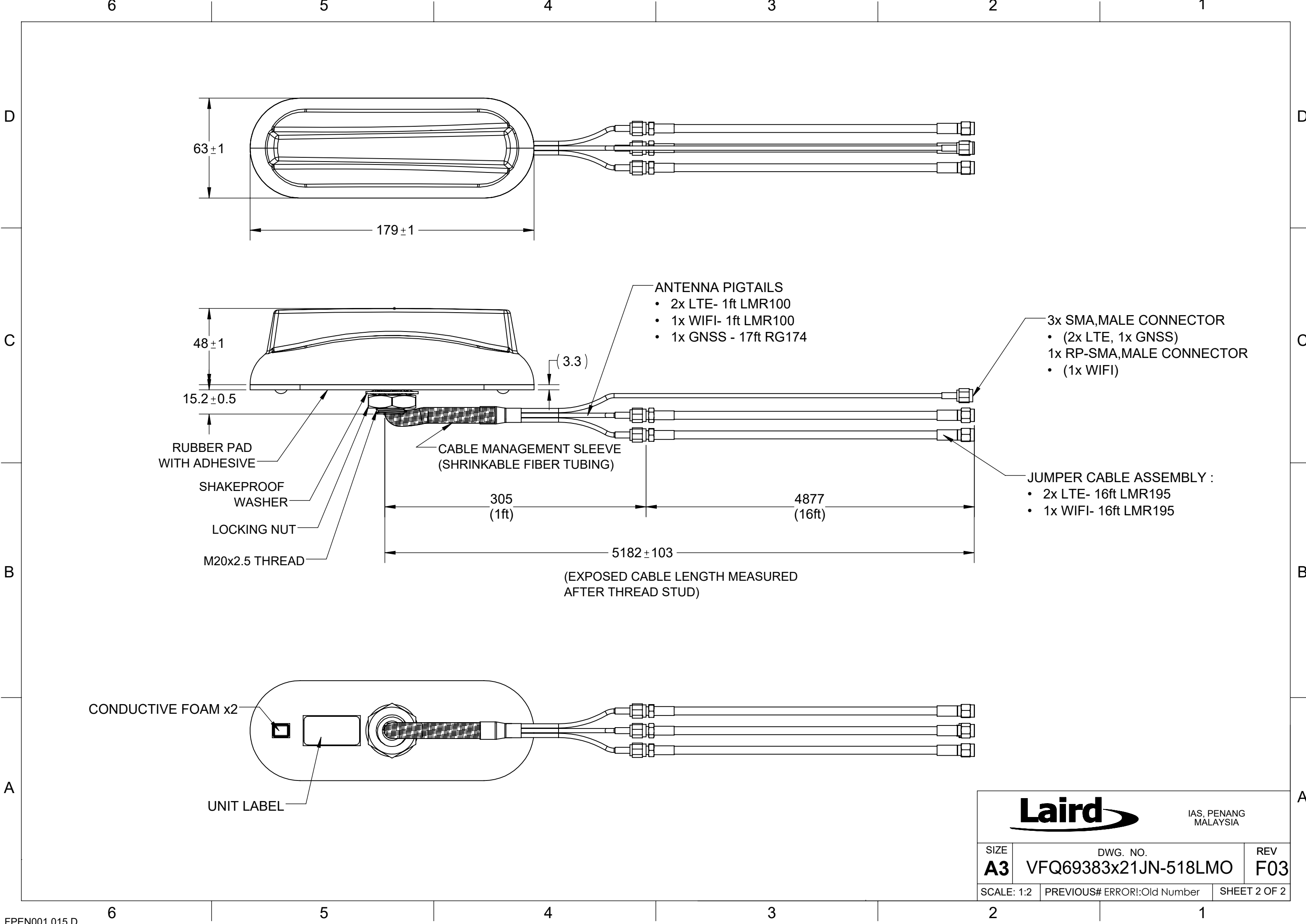
UNLESS OTHERWISE NOTED, THIS DOCUMENT CONTAINS LAIRD CONFIDENTIAL INFORMATION. REPRODUCTION, USE, DISCLOSURE OR TRANSMITTAL OF ALL OR ANY PART OF THIS DOCUMENT IS PROHIBITED EXCEPT TO THE EXTENT APPROVED IN WRITING BY AN AUTHORIZED REPRESENTATIVE OF LAIRD. LAIRD RESERVES ALL RIGHTS UNDER PATENTS, TRADEMARKS, COPYRIGHTS AND TRADE SECRETS. COPYRIGHT, LAIRD 2017. ALL RIGHTS RESERVED.

3			2		1	
REVISIONS						
REV.	ECN#	ZONE	DESCRIPTION		CHANGED BY/DATE	APPROVED BY/DATE
F01			INITIAL RELEASE		LCTAN 19MAR20	TERENCE 19MAR20
F02			CHANGE DESIGN & UPDATE SPECIFICATION		9/14/2020	9/14/2020
F03	ECO-20-00525		UPDATE VIEW		LCTAN 22DEC20	TERENCE 22DEC2



ENVIRONMENTAL SPECIFICATIONS	
Operating Engvironment	Outdoor Vehicle
Operating Temperature, °C (°F)	-30 to +70 (-22 to +158)
Storage Temperature	-40 to +85 (-40 to +185)
Ingress Protection	IP67
Rail Compliance Standards	EN61373 (Shock & Vibration), EN50155 (Temperature)
Material Substance Compliance	RoHS Compliant

MATERIAL: SEE BOM			THIRD ANGLE PROJECTION		<div>Laird</div>				IAS, PENANG MALAYSIA		
FINISH: N/A					<div>TITLE:</div> <div>VFQ69383x21JN-518L</div> <div>MOUNTING &amp; OUTLINE</div>						
			DO NOT SCALE DRAWING								
APPROVALS		DATE	INTERPRET DIMENSIONING AND TOLERANCING IN ACCORDANCE WITH ASME Y14.5M-2009								
DRAWN BY	LCTAN	27AUG20	TOLERANCES UNLESS OTHERWISE SPECIFIED								
ELEC. ENG.	TH LEE	27AUG20	DIMENSIONS ARE IN MILLIMETERS								
MECH. ENG.	WTNG	27AUG20	ANGLE: 0 PLACE DECIMAL: ±30' 1 PLACE DECIMAL: ±0.5 2 PLACE DECIMAL: ±0.25 ±0.13		SIZE		DWG. NO.		REV		
MFG./OPS.	GL YEAP	27AUG20	SURFACE ROUGHNESS 		A3		VFQ69383x21JN-518LMO		F03		
					SCALE: 1:2		PREVIOUS# ERROR!:Old Number			SHEET 1 OF 2	





IAS, PENANG  
MALAYSIA

SIZE	DWG. NO.	REV
<b>A3</b>	<b>VFQ69383x21JN-518LMO</b>	<b>F03</b>
SCALE: 1:2	PREVIOUS# ERROR!:Old Number	SHEET 2 OF 2