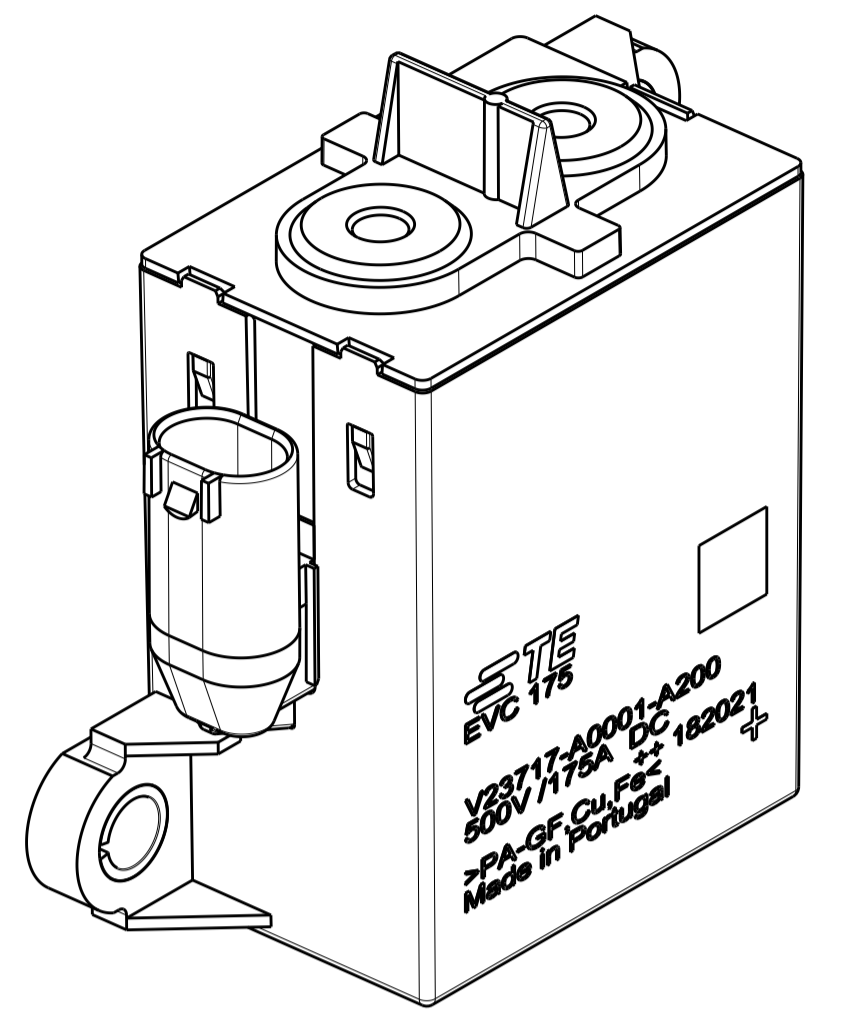
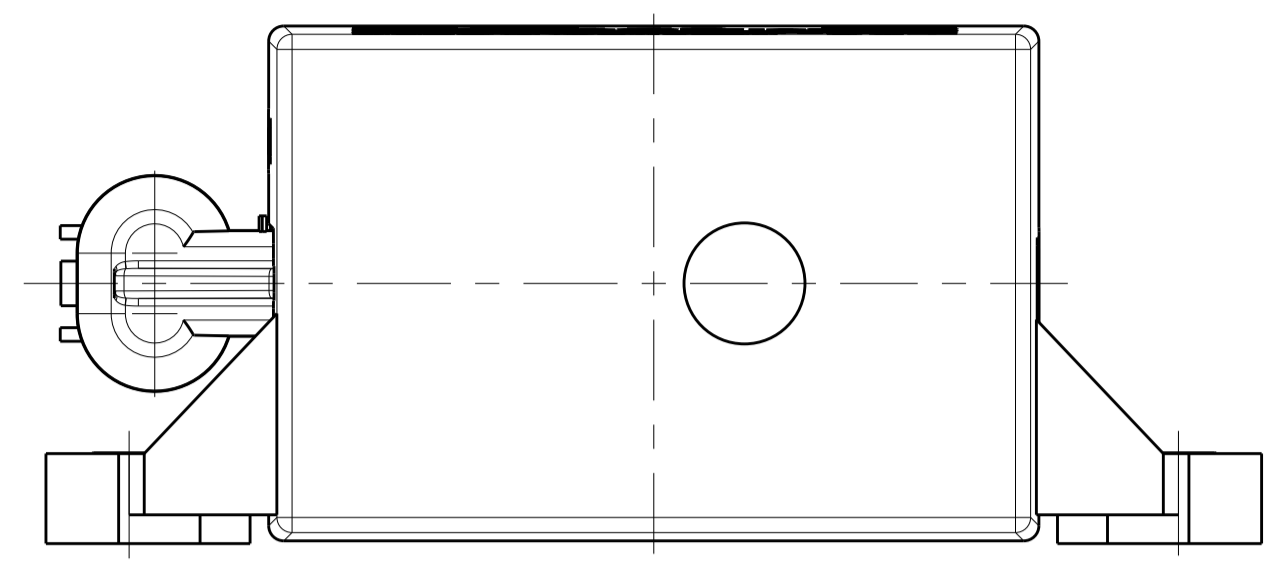
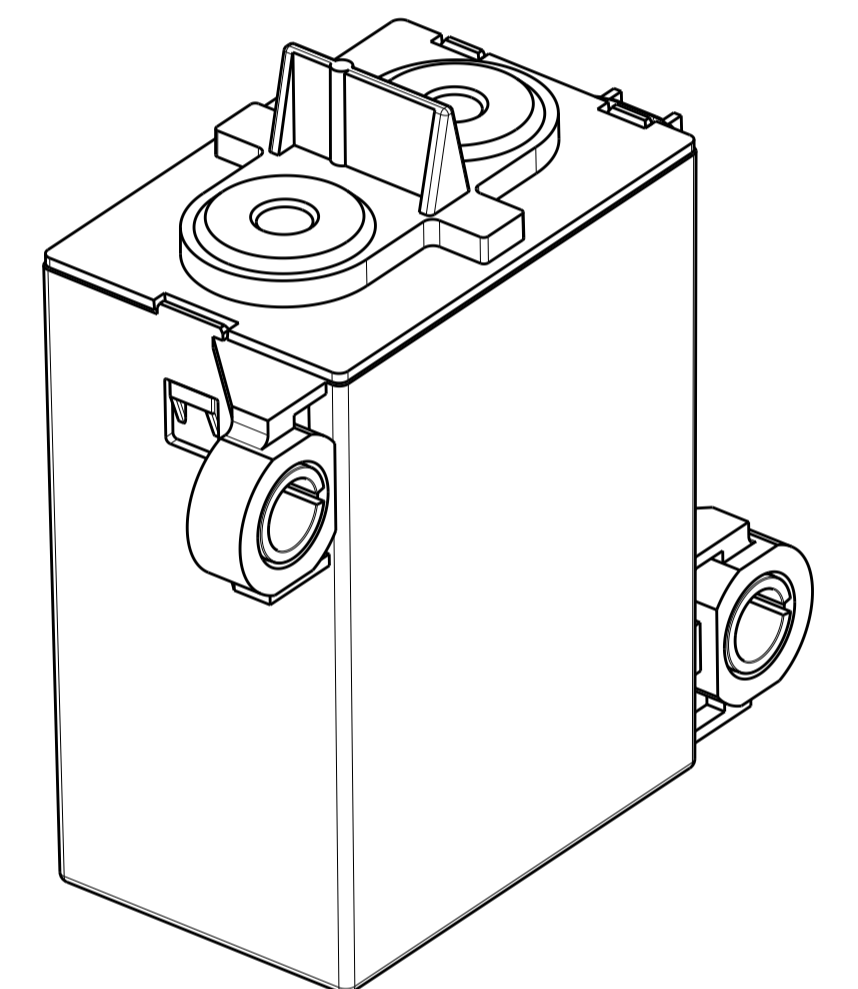
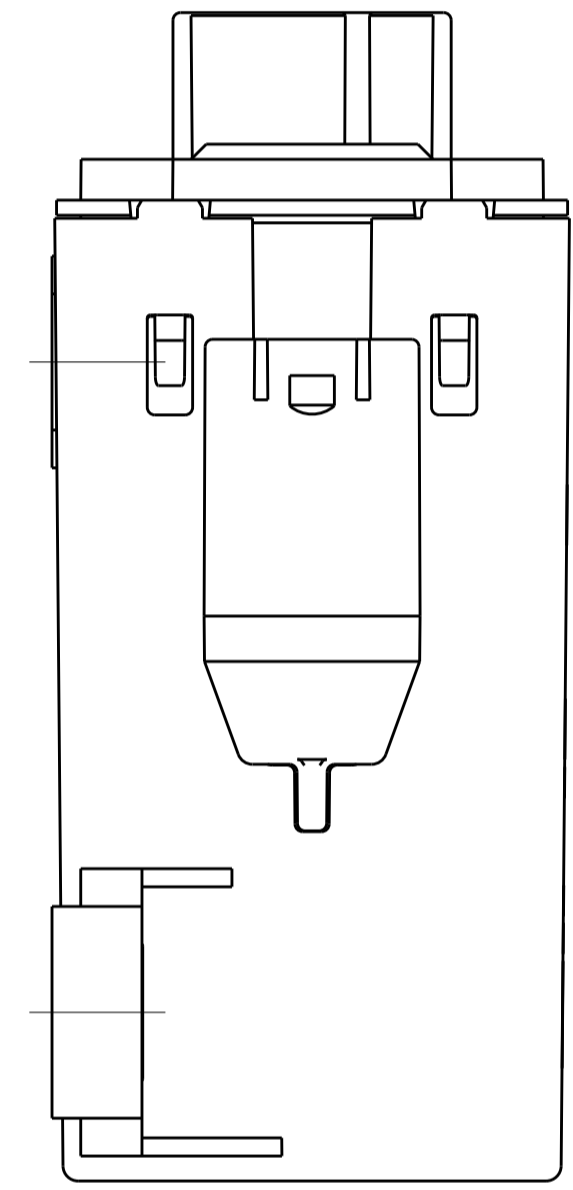
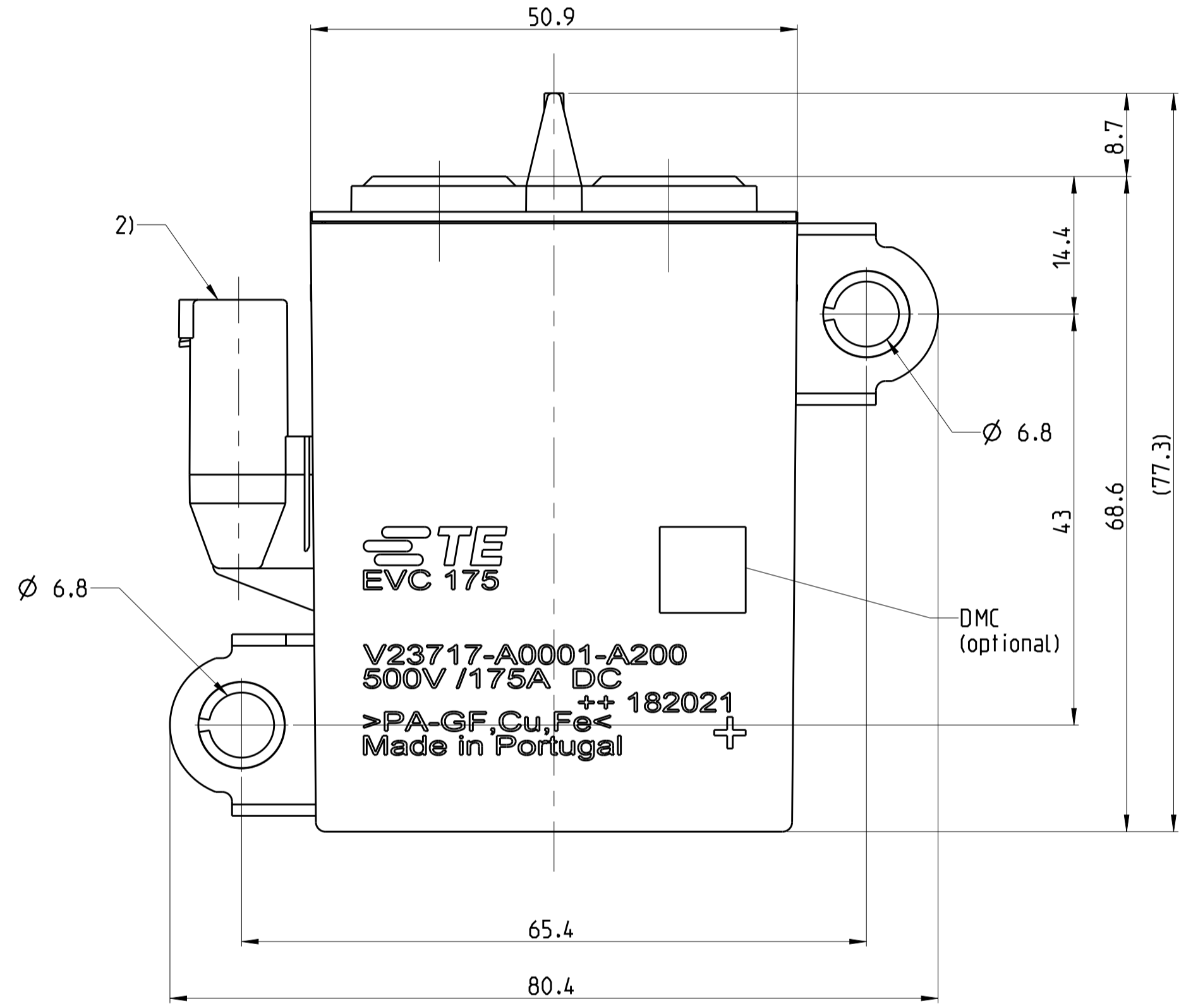
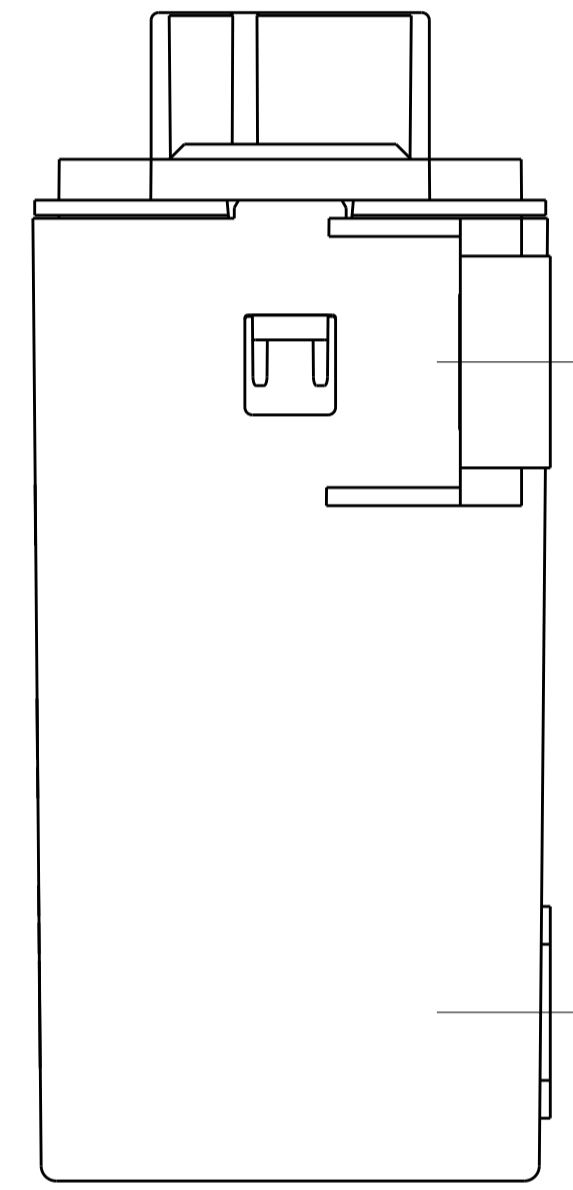
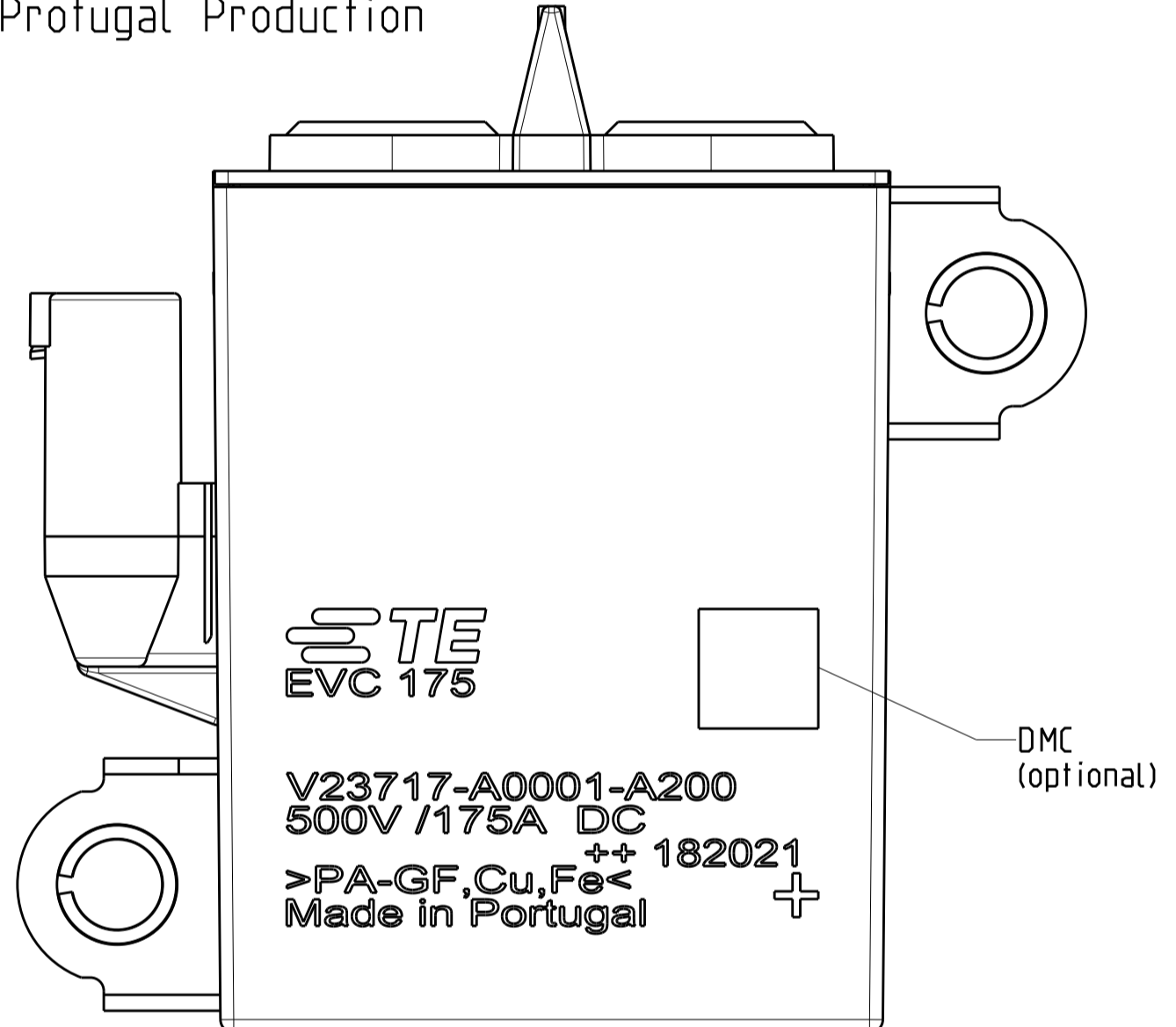


| REVISIONS | | | | |
|-----------|-----|----------------|-----------|-----------|
| P | LTR | DESCRIPTION | DATE | DWN APVD |
| A | | Drawing Lay in | 28APR2016 | UGAB THAE |
| A1 | | TCPN-Table | 06JUL2016 | UGAB THAE |
| B | | ECD-19-014833 | 26Sep2019 | UGAB THAE |

Marking for Standard EVC 175
China Production



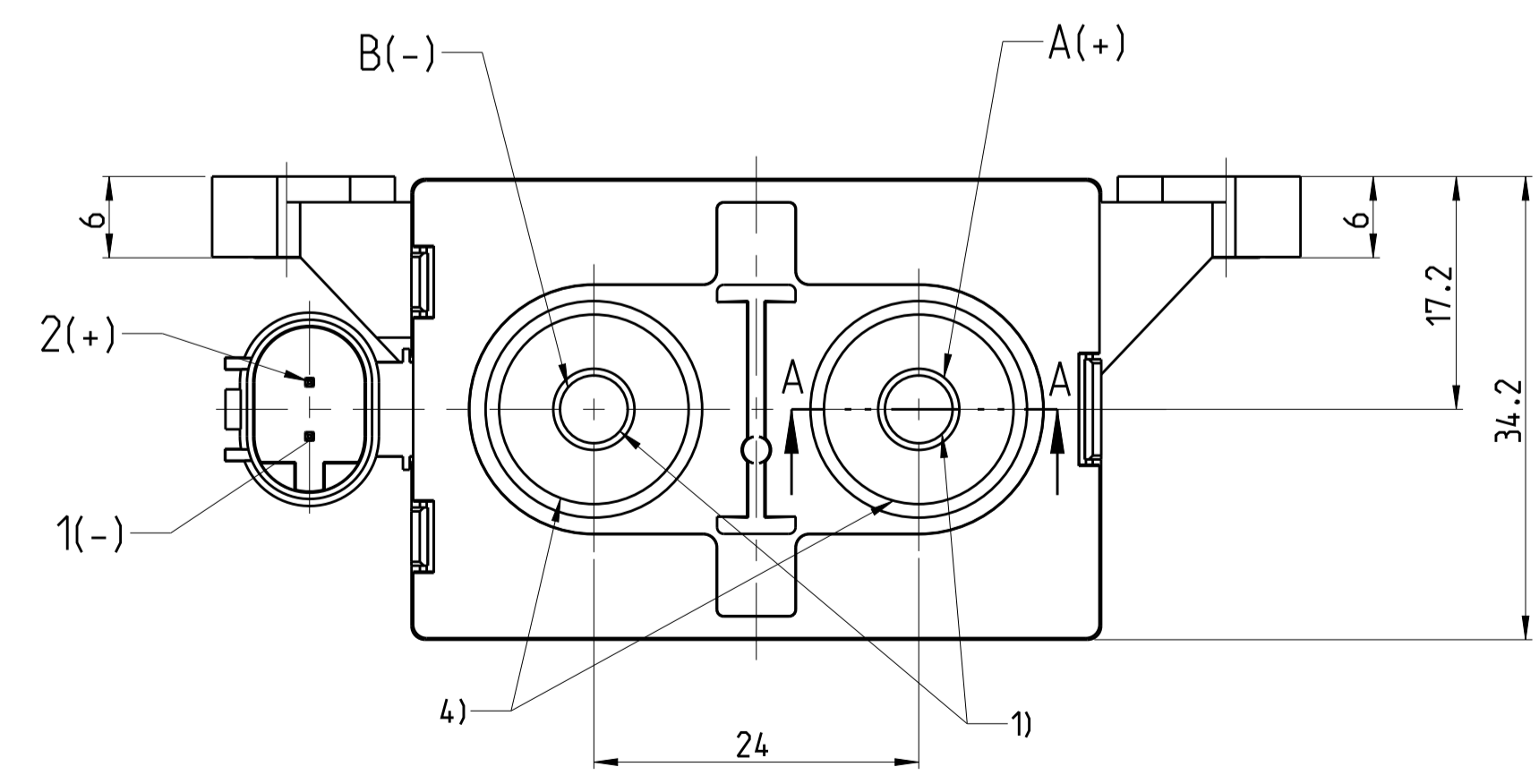
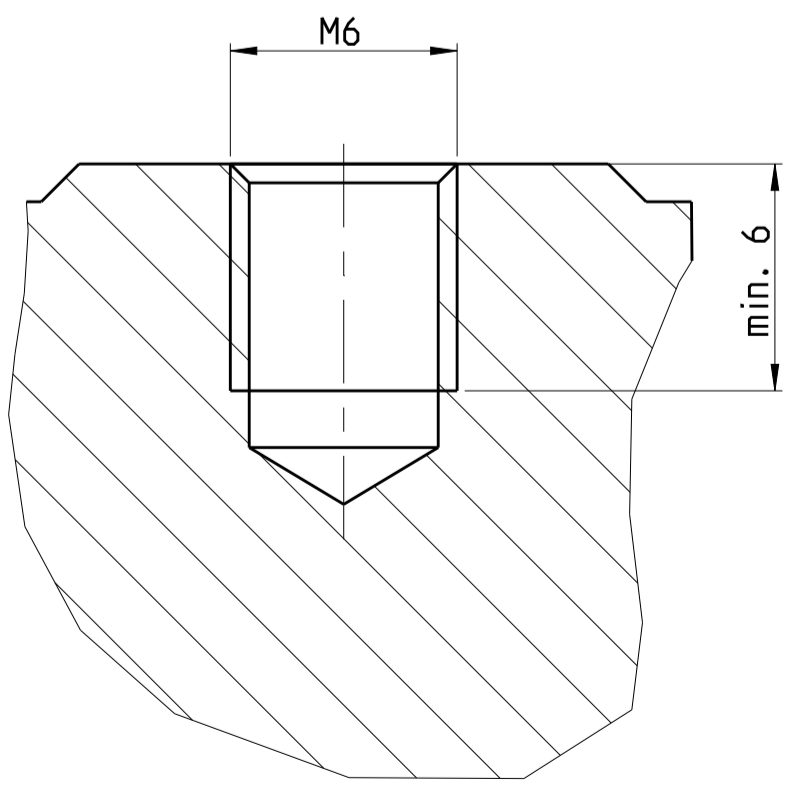
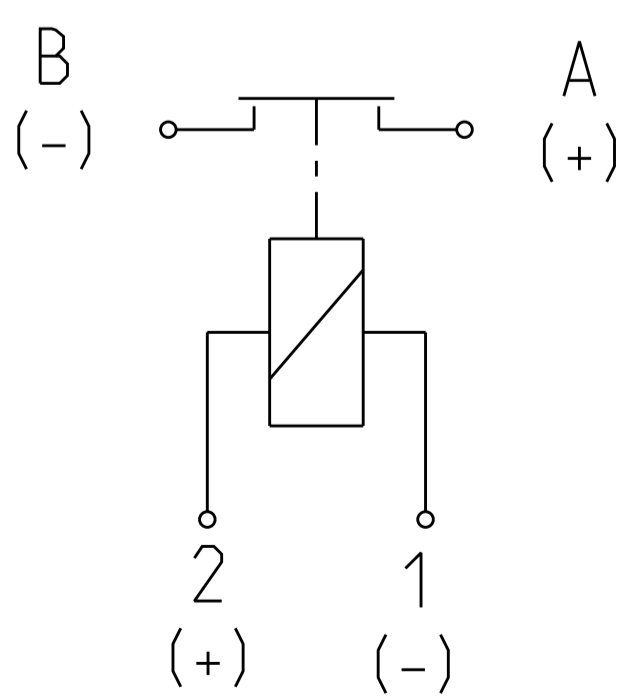
Marking for Standard EVC 175
Protugal Production



Applies for Termit A and B

A-A
5:1

Forward load current direction



- Notice:
- 1) Permitted Torque max. 5 Nm
 - 2) Socket Housing
TE Interface 2 Pos. MQS Code A,
appropriate for Socket Housing 2 Pos. MQS,
TE part no. 1-967644-1
 - 3) Tolerances ISO8015 / ISO2768-cL
 - 4) Sn Plating

| | | | |
|---------------------|-------------|-----|-------------------|
| China Production | 2312311-2 | B | V23717-A0001-A200 |
| Portugal Production | 6-1904123-6 | B | V23717-A0001-A200 |
| Remarks | TCPN | REV | PART ALIAS |

| DIMENSIONS: | | TOLERANCES UNLESS OTHERWISE SPECIFIED: | | MATERIAL: | | FINISH: | | WEIGHT: | | CUSTOMER DRAWING: | |
|-------------|----|--|---|-----------|-----|---------|----|---------|---------------------|-------------------|--------|
| mm | 3) | PLC | ± | STE | STE | 295 g | A1 | 00779 | C=V23717-A0001-A200 | SCALE | 2:1 |
| | | PLC | ± | | | | | | | SHEET | 1 of 1 |
| | | PLC | ± | | | | | | | REV | B |
| | | ANGLES | ± | | | | | | | | |