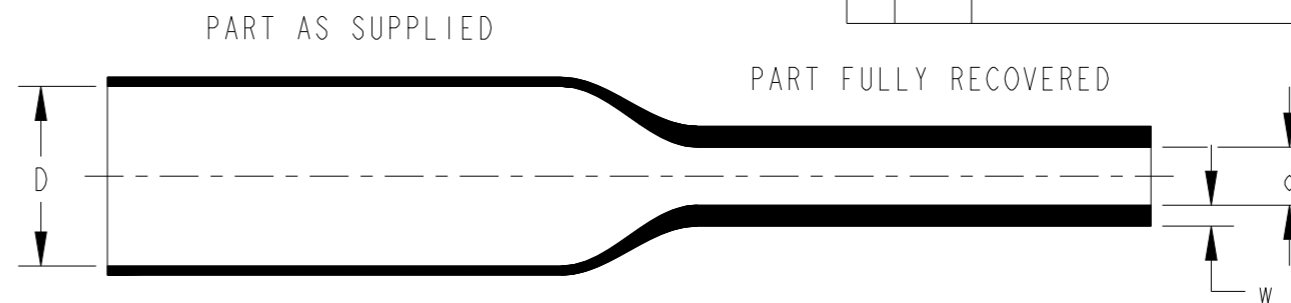
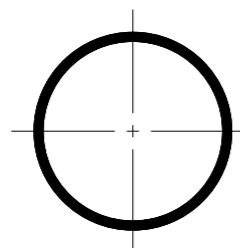


REVISIONS

P	LTR	DESCRIPTION	DATE	DWN	APVD
	A	INITIAL RELEASE	17AUG2023	BDA	MB



PRODUCT DIMENSIONS

PRODUCT SIZE	AS SUPPLIED		AS RECOVERED			
	MINIMUM EXPANDED I.D. (D)		MAXIMUM RECOVERED I.D. (d)		WALL THICKNESS AFTER RECOVERY (W)	
	mm.	in.	mm.	in.	mm.	in.
TFE-R-5/64	1.98	0.078	0.64	0.025	0.23±0.05	0.009±0.002
TFE-R-1/8 [△]	3.18	0.125	0.94	0.037	0.30±0.05	0.012±0.002
TFE-R-3/16	4.75	0.187	1.27	0.050	0.30±0.08	0.012±0.003
TFE-R-1/4	6.35	0.250	1.60	0.063	0.30±0.08	0.012±0.003
TFE-R-5/16	7.92	0.312	1.98	0.078	0.30±0.08	0.012±0.003
TFE-R-3/8	9.52	0.375	2.44	0.096	0.30±0.08	0.012±0.003
TFE-R-7/16	11.12	0.438	2.84	0.112	0.30±0.08	0.012±0.003
TFE-R-1/2	12.70	0.500	3.66	0.144	0.38±0.10	0.015±0.004
TFE-R-9/16	14.27	0.562	3.94	0.155	0.38±0.10	0.015±0.004
TFE-R-5/8	15.87	0.625	4.52	0.178	0.38±0.10	0.015±0.004
TFE-R-3/4	19.05	0.750	5.69	0.224	0.38±0.10	0.015±0.004
TFE-R-7/8	22.22	0.875	6.20	0.244	0.38±0.10	0.015±0.004
TFE-R-1	25.40	1.000	7.06	0.278	0.38±0.10	0.015±0.004
TFE-R-1-1/4	31.75	1.250	8.81	0.347	0.38±0.10	0.015±0.004
TFE-R-1-1/2	38.10	1.500	10.16	0.400	0.38±0.10	0.015±0.004
TFE-R-1-3/4	44.45	1.750	11.43	0.450	0.38±0.10	0.015±0.004
TFE-R-2	50.80	2.000	13.21	0.520	0.51±0.13	0.020±0.005
TFE-R-2-1/2	63.50	2.500	16.51	0.650	0.51±0.13	0.020±0.005

PRODUCT INFORMATION

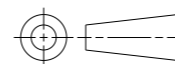
1. FLAME RETARDANT
2. MATERIAL: ELECTRICALLY INSULATING IRRADIATED POLYTETRAFLUOROETHYLENE, HEAT SHRINKABLE SLEEVING
3. COLOUR: TRANSLUCENT MILK WHITE
4. SHRINK RATIO: 3.2:1
5. TUBING CUT TO SPECIFIC LENGTHS CAN BE SUPPLIED FROM THE PRODUCT SIZES REFERENCED WITHIN THIS DRAWING

[△] SIZE 1/8 DOES NOT MEET THE DIMENSIONAL REQUIREMENTS OF BS 4G 198

STANDARD CUTTING TOLERANCES(mm)	
CUT LENGTH	TOLERANCE
UPTO TO 9.90mm	±1.50mm
10mm TO 24.90mm	±1.50mm
25mm TO 54.90mm	±1.50mm
55mm TO 99.90mm	±3.00mm
100mm TO 149.90mm	±4.00mm
150mm TO 499.90mm	±5.00mm
500mm AND GREATER	±25.40mm

THIS DRAWING IS A CONTROLLED DOCUMENT.

DIMENSIONS: mm(inches)



MATERIAL SEE NOTE

TOLERANCES UNLESS OTHERWISE SPECIFIED:

- 0 PLC ±0.5
- 1 PLC ±0.13
- 2 PLC ±0.13
- 3 PLC ±0.013
- 4 PLC ±0.0001
- ANGLES ±
- FINISH -

DWN	17AUG2023
BASAVARAJA D A	
CHK	17AUG2023
SELVAPANDIAN B	
APVD	17AUG2023
VLADIMIR NEMEC	
PRODUCT SPEC	RW-2054
APPLICATION SPEC	-
WEIGHT	-
CUSTOMER DRAWING	

		NAME		RESTRICTED TO	
		TFE-R SLEEVING		-	
SIZE	CAGE CODE	DRAWING NO	SCALE		
A3	-	©-TFE-R	NTS	SHEET	1 OF 1
REV			A		