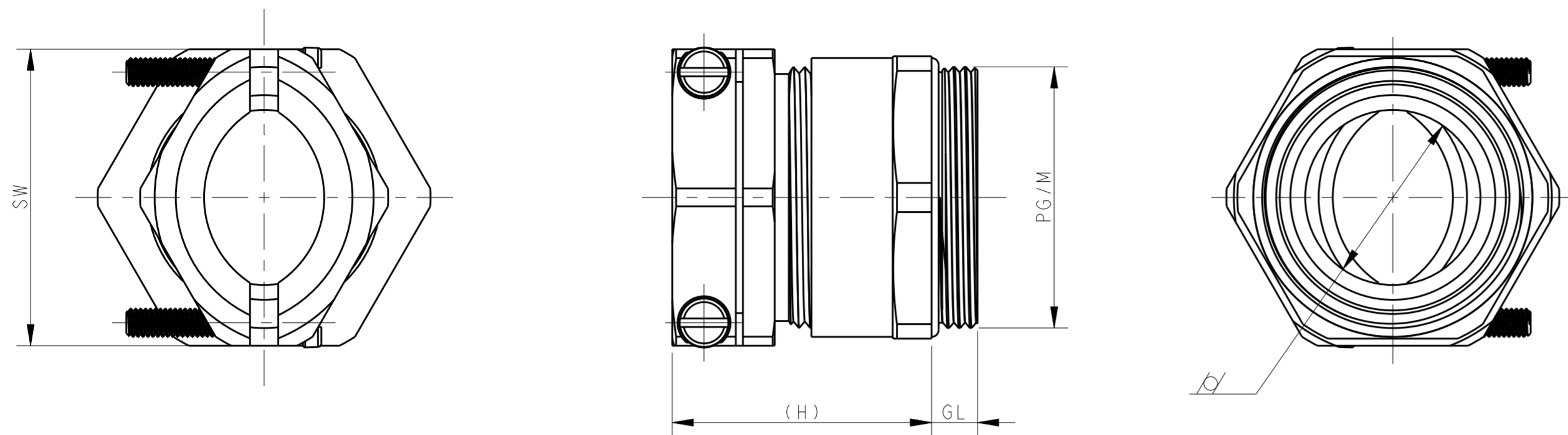


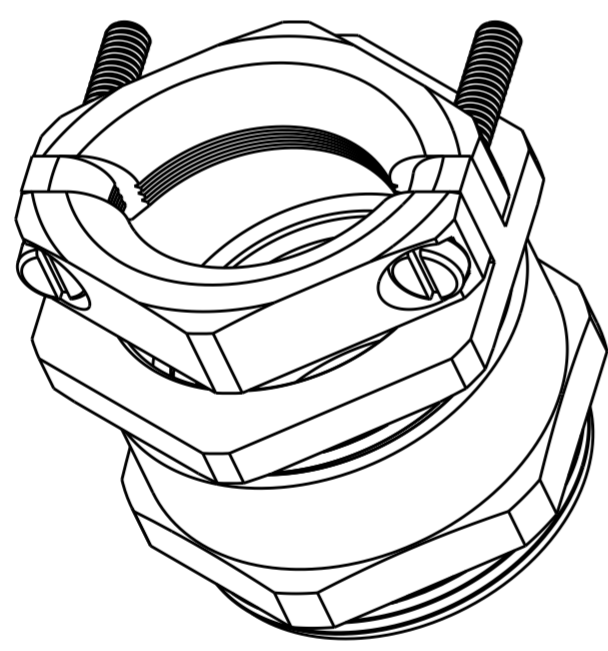
THIS DRAWING IS UNPUBLISHED. RELEASED FOR PUBLICATION 20  
 © COPYRIGHT 20 BY - ALL RIGHTS RESERVED.

REVISIONS					
P	LTR	DESCRIPTION	DATE	DWN	APVD
	A	INITIAL	16JUL2016	YC	CW
	A1	ECR-17-012965	07SEP2017	BS	CW
	A2	ECR-19-004297	20MAR2019	SR	CW



NOTES:  
 1. TECHNICAL CHARACTERISTICS:  
 SHELL MATERIAL : BRASS, NICKEL PLATED  
 SEAL MATERIAL : NBR  
 PROTECTION DEGREE : IP65  
 WIRE RANGE : SEE TABLE

注释:  
 1. 技术参数:  
 主体材料: 铜镀镍  
 密封材料: NBR  
 防护等级: IP65  
 夹线范围: 见表格



OBSOLETE	T3115090101-000	ZSM-9-S	CLAMP GLAND WITH NORMAL SEAL PG9 单层夹口接头 PG9	8-10	PG9	19	10.5	6	24.9
	T3115110101-000	ZSM-11-S	CLAMP GLAND WITH NORMAL SEAL PG11 单层夹口接头 PG11	10-12	PG11	22	12	6	27.1
	T3115130101-000	ZSM-13-S	CLAMP GLAND WITH NORMAL SEAL PG13.5 单层夹口接头 PG13.5	12-14	PG13.5	24	13.8	6.5	29.1
	T3115160101-000	ZSM-16-S	CLAMP GLAND WITH NORMAL SEAL PG16 单层夹口接头 PG16	14-16	PG16	26	16	6.5	29.9
	T3115210101-000	ZSM-21-S	CLAMP GLAND WITH NORMAL SEAL PG21 单层夹口接头 PG21	18-21	PG21	33	20.8	7	33.5
	T3115290101-000	ZSM-29-S	CLAMP GLAND WITH NORMAL SEAL PG29 单层夹口接头 PG29	23-25	PG29	42	24.8	8	36.7
OBSOLETE	T3115360101-000	ZSM-36-S	CLAMP GLAND WITH NORMAL SEAL PG36 单层夹口接头 PG36	33-35	PG36	50	35.2	9	41
	T3115420101-000	ZSM-42-S	CLAMP GLAND WITH NORMAL SEAL PG42 单层夹口接头 PG42	39-41	PG42	59	42	10	45.9
	T3115480101-000	ZSM-48-S	CLAMP GLAND WITH NORMAL SEAL PG48 单层夹口接头 PG48	43-45	PG48	64	46	9	49
	T3115160121-000	ZSM-16-SM	CLAMP GLAND WITH NORMAL SEAL M16 单层夹口接头 M16	8-10	M16X1.5	19	10.5	6	25.9
	T3115200121-000	ZSM-20-SM	CLAMP GLAND WITH NORMAL SEAL M20 单层夹口接头 M20	10-12	M20X1.5	22	12	6	26.6
	T3115250121-000	ZSM-25-SM	CLAMP GLAND WITH NORMAL SEAL M25 单层夹口接头 M25	18-21	M25X1.5	33	20.8	7	33.5
	T3115320121-000	ZSM-32-SM	CLAMP GLAND WITH NORMAL SEAL M32 单层夹口接头 M32	23-25	M32X1.5	42	24.8	8	36.7
OBSOLETE	T3115400121-000	ZSM-40-SM	CLAMP GLAND WITH NORMAL SEAL M40 单层夹口接头 M40	33-35	M40X1.5	50	35.2	9	41
	T3115400121-100	ZSM-40-SM	CLAMP GLAND WITH NORMAL SEAL, CROSS-HEAD SCREW M40 单层夹口接头, 十字螺丝 M40	33-35	M40X1.5	50	35.2	9	41
	T3115500121-000	ZSM-50-SM	CLAMP GLAND WITH NORMAL SEAL M50 单层夹口接头 M50	39-41	M50X1.5	59	42	10	45.9
	T3115630121-000	ZSM-63-SM	CLAMP GLAND WITH NORMAL SEAL M63 单层夹口接头 M63	43-45	M63X1.5	64	46	9	48
	ASSEMBLY PART NUMBER 成品料号	ASSEMBLY PART DESCRIPTION 成品描述		WIRE RANGE 夹线范围	PG/M	SW	∅	GL	H

THIS DRAWING IS A CONTROLLED DOCUMENT.

DWN YORK CHEN 16JUL2016  
 CHK KYLE ZENG 16JUL2016  
 APVD CHRIS WANG 16JUL2016

**STE** TE Connectivity

NAME CLAMP GLAND WITH NORMAL SEAL

PRODUCT SPEC -  
 APPLICATION SPEC -  
 WEIGHT -

SIZE A2 CAGE CODE 00779 DRAWING NO. C-T3115XXX1X1X00 RESTRICTED TO -

CUSTOMER DRAWING SCALE 3:2 SHEET 1 OF 1 REV A2