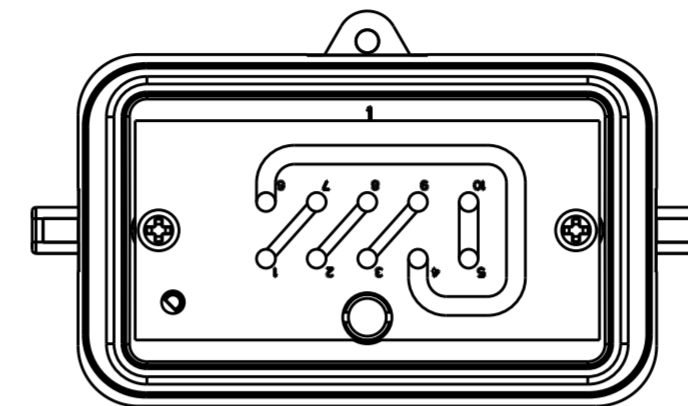


REVISIONS					
P	LTR	DESCRIPTION	DATE	OWN	APVD
	A	INITIAL	30DEC2017	RL	CW
	B	ECR-18-016125	20OCT2018	BS	CW
	C	ECR-19-010609	08JUL2019	AL	CW



PCB SHORT CIRCUIT FIGURE  
PCB板示图

NOTES:  
1. TECHNICAL CHARACTERISTICS:  
HOUSING MATERIAL: ADC-12, POWDER COATED, GRAY  
INSULATION MATERIAL: PC  
RATED VOLTAGE: 500 V  
RATED CURRENT: 16 A  
RATED IMPULSE VOLTAGE: 6 KV  
POLLUTION DEGREE: 3  
FLAMMABILITY: UL94V-0  
MATING CYCLES: 500 CYCLES  
WIRE RANGE: 0.5-2.5 mm<sup>2</sup> (20-14 AWG)  
CONTACT TYPE: SPRING CRIMP CONTACT

注释：

1. 技术参数：

壳体材料：ADC-12，粉末喷涂，灰色

绝缘材料：PC

额定电压：500V

额定电流：16A

额定脉冲电压：6KV

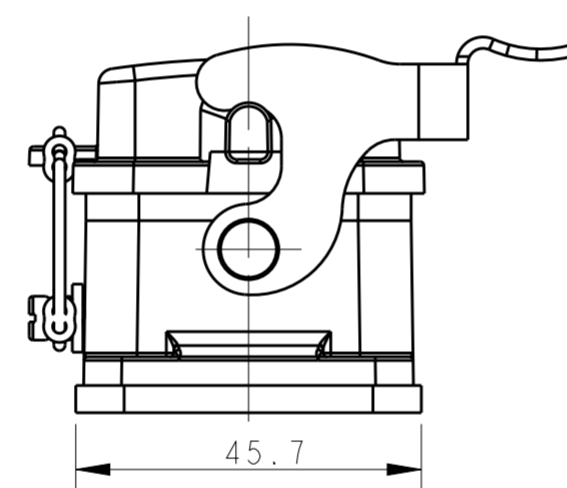
污染等级：3

阻燃等级：UL94V-0

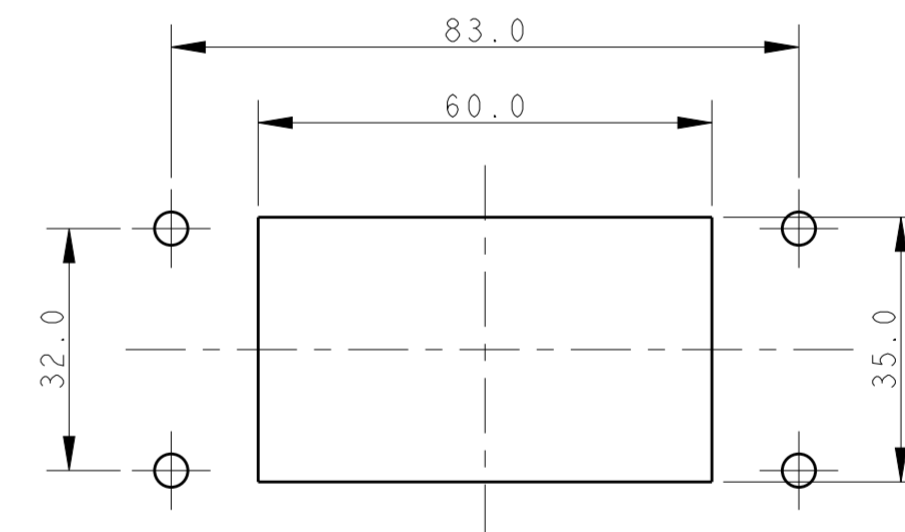
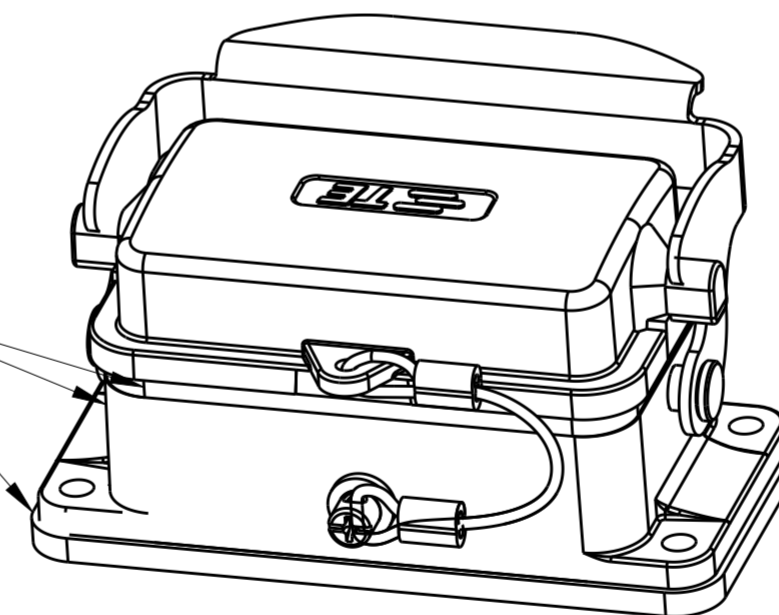
插拔次数：500次

接线范围：0.5-2.5mm<sup>2</sup>（20-14AWG）


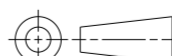
接线类型：弹片型



SEALING & GASKET IS FULLY  
GLUED WITH HOUSING.  
密封圈及包边密封垫与下壳体粘结在一起。



PANEL CUT OUT

T2102100220-000		ZGGP-H10BSK (1-7/2-8/3-9/4-6/5-10)		H10B ELEVATOR MAINTENANCE BOX WITH INSERT,ADD RIBS, SEPARATED PLASTIC COVER (1-7/2-8/3-9/4-6/5-10) H10B电梯检修插座含芯件,增加筋条,塑料盖分开 (1-7/2-8/3-9/4-6/5-10)			
PART NUMBER 零件料号		PART DESCRIPTION 零件描述					
THIS DRAWING IS A CONTROLLED DOCUMENT.		DWN 30DEC2017 ROY LIU CHK 30DEC2017 GINO YAO APVD 30DEC2017 CHRIS WANG		 TE Connectivity  ZGGP-H10BSK (1-7/2-8/3-9/4-6/5-10)			
DIMENSIONS: mm		TOLERANCES UNLESS OTHERWISE SPECIFIED:  0 PLC ± 1 PLC ± 2 PLC ± 3 PLC ± 4 PLC ± ANGLES ± FINISH				NAME	
		PRODUCT SPEC - APPLICATION SPEC - WEIGHT -				SIZE CAGE CODE DRAWING NO A200779C-T2102100220000	
MATERIAL - -		- -		RESTRICTED TO - - CUSTOMER DRAWING			
				SCALE 1:1 SHEET 1 OF 1 REV C			