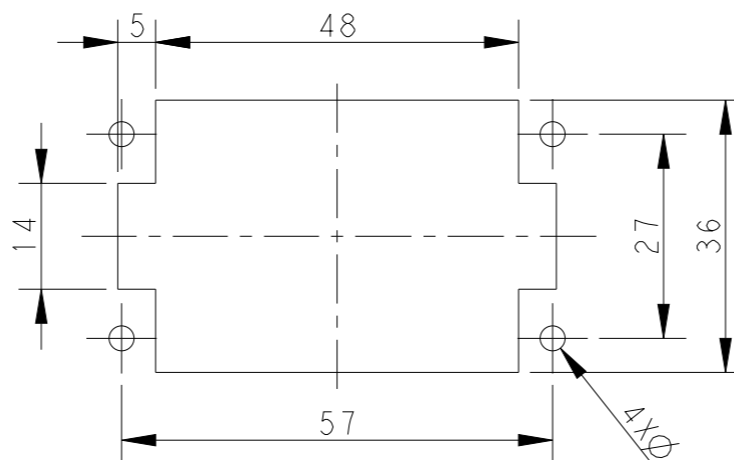
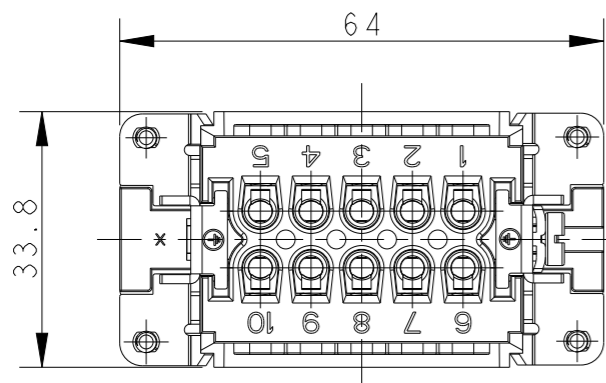


P	LTR	DESCRIPTION	DATE	DWN	APVD
	B	ECR-15-013759	27SEP2015	DW	CW
	B1	ECR-16-011988	25AUG2016	YC	CW
	B2	ECR-18-017123	15DEC2018	KW	CW
	C	ECR-21-106515	09JUL2021	SQ	CW



PANEL CUT FOR INSERTS FOR USE WITHOUT HOODS / HOUSINGS

不使用防护外壳时芯件的安装开孔图

NOTES:

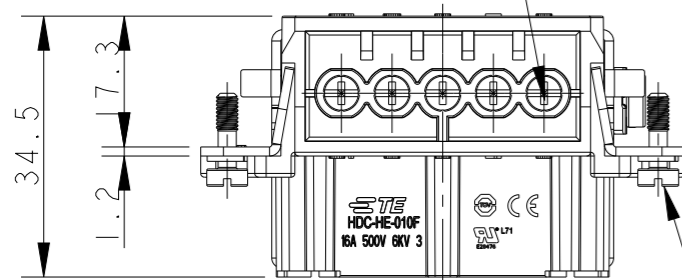
- TECHNICAL CHARACTERISTICS:
 INSULATION MATERIAL: PC
 RATED VOLTAGE: 500V
 RATED CURRENT: 16A
 INSULATION RESISTANCE: $\geq 400M\Omega$
 RATED IMPULSE VOLTAGE: 6KV
 POLLUTION DEGREE: 3
 FLAMMABILITY: UL94V-0
 MATING CYCLES: 500 CYCLES
 WIRE RANGE: $0.5mm^2 \sim 2.5mm^2$ (AWG20-AWG14)
 CONTACT TYPE: SCREW CLAMP (M3)

注释:

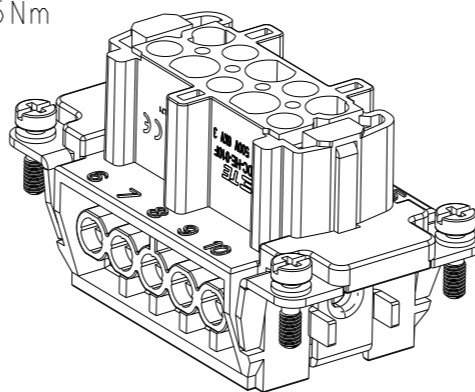
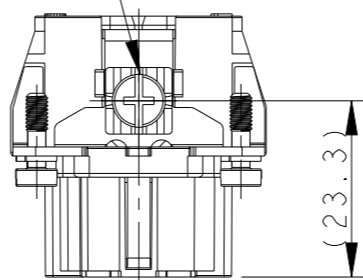
- 技术参数:
 绝缘材料: PC
 额定电压: 500V
 额定电流: 16A
 绝缘电阻: $\geq 400M\Omega$
 脉冲电压: 6KV
 污染等级: 3
 阻燃等级: UL94V-0
 插拔次数: 500 次
 接线范围: $0.5mm^2 \sim 2.5mm^2$ (AWG20-AWG14)
 接线类型: 螺丝压接 (M3)

10X M3 SCREW, RECOMMENDED
TIGHTENING TORQUE 0.5Nm
10X M3螺丝, 推荐锁紧力矩0.5Nm

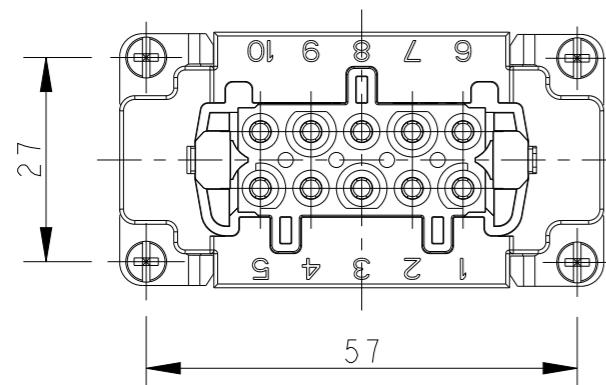
M4 SCREW, RECOMMENDED
TIGHTENING TORQUE 1.2Nm
M4螺丝, 推荐锁紧力矩1.2Nm



4X M3 SCREW, RECOMMENDED
TIGHTENING TORQUE 0.5Nm
4X M3螺丝, 推荐锁紧力矩0.5Nm



TYPE 1, T2040102201-000, WITH LOGO
类型 1, T2040102201-000, 带LOGO



THIS DRAWING IS A CONTROLLED DOCUMENT.

DIMENSIONS:		TOLERANCES UNLESS OTHERWISE SPECIFIED:	
mm			
	0 PLC	±-	
	1 PLC	±-	
	2 PLC	±-	
	3 PLC	±-	
	4 PLC	±-	
	ANGLES	±-	
MATERIAL	FINISH	-	-

DWN	GINO YAO	14APR2015
CHK	CHRIS WANG	14APR2015
APVD	XIANG XU	14APR2015
PRODUCT SPEC	108-137044	
APPLICATION SPEC	114-137044	
WEIGHT	-	
CUSTOMER DRAWING		

		TE Connectivity	
		NAME HE-010-F	
SIZE	CAGE CODE	DRAWING NO	RESTRICTED TO
A3	00779	©-T2040102201000	-
SCALE 1:1		SHEET 1 OF 2	REV C

THIS DRAWING IS UNPUBLISHED.

RELEASED FOR PUBLICATION

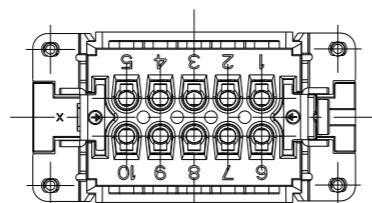
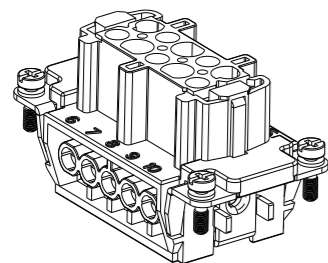
20

© COPYRIGHT 20 BY -

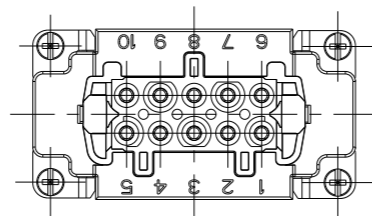
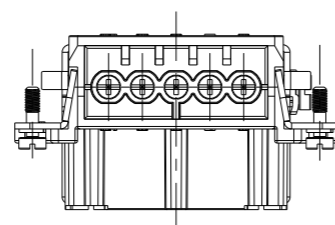
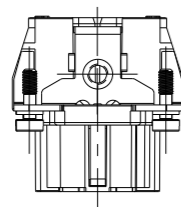
ALL RIGHTS RESERVED.

REVISIONS

P	LTR	DESCRIPTION	DATE	DWN	APVD
-		SEE SHEET 1	-	-	-

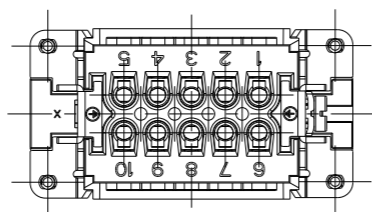
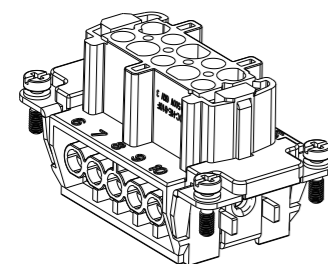


TYPE 2, T2040102201-001, WITHOUT LASER SIDE MARK
 类型 2, T2040102201-001, 不带侧面激光标识

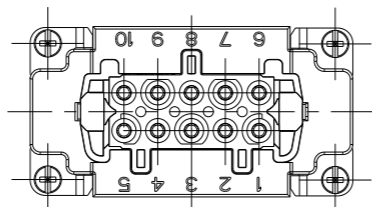
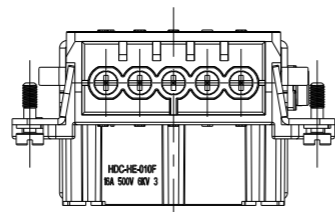
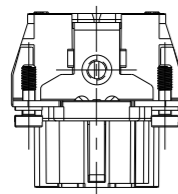


NOTE:
 ALL SPEC REFER TO TYPE 1

注释:
 所有产品规范参照 TYPE 1



TYPE 3, T2049102201-000, WITHOUT LASER LOGO
 类型 3, T2049102201-000, 不带激光LOGO标识



T2040102201-000	HE-010-F	HE-010 FEMALE INSERT HE-010 母插	TYPE 1
T2040102201-001	HE-010-F	HE-010 FEMALE INSERT, WITHOUT LASER SIDE MARK HE-010 母插, 无激光侧面标识	TYPE 2
T2049102201-000	HE-010-F	HE-010 FEMALE INSERT, WITHOUT LOGO HE-010 母插, 无LOGO	TYPE 3
PART NUMBER 料号	PART DESCRIPTION 描述		TYPE 类型

THIS DRAWING IS A CONTROLLED DOCUMENT.

DWN 14APR2015
 GINO YAO
 CHK 14APR2015
 CHRIS WANG
 APVD 14APR2015
 XIANG XU

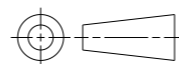
NAME HE-010-F



DIMENSIONS:
 mm

TOLERANCES UNLESS OTHERWISE SPECIFIED:

- 0 PLC ±-
- 1 PLC ±-
- 2 PLC ±-
- 3 PLC ±-
- 4 PLC ±-
- ANGLES ±-
- FINISH -



PRODUCT SPEC 108-137044

APPLICATION SPEC 114-137044

WEIGHT -

SIZE A3 CAGE CODE 00779 DRAWING NO. T2040102201000 RESTRICTED TO -

CUSTOMER DRAWING SCALE 1:1 SHEET 2 OF 2 REV C