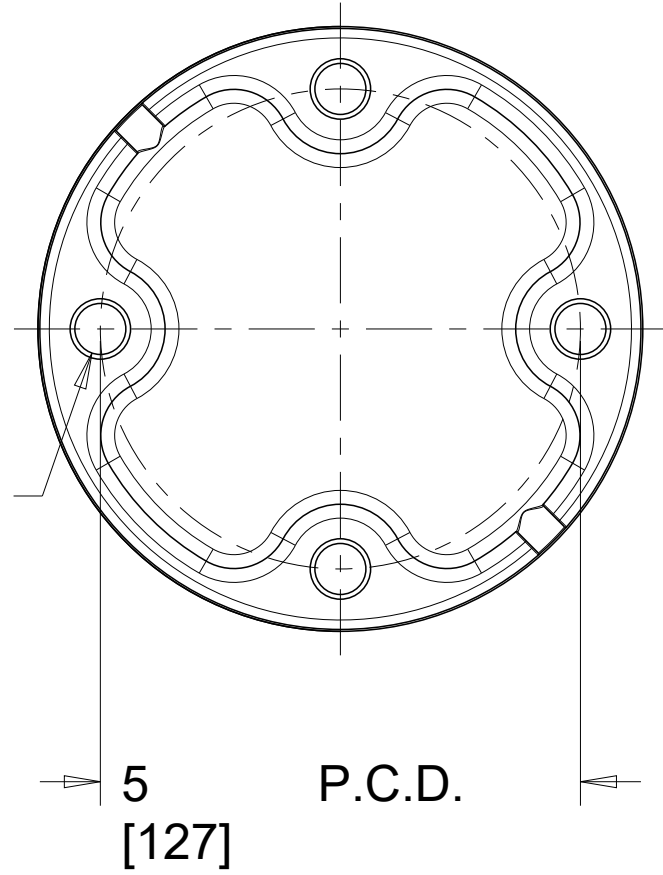


THIS DRAWING IS UNPUBLISHED. RELEASED FOR PUBLICATION  
 © COPYRIGHT copyright\_date BY - ALL RIGHTS RESERVED.

REVISIONS					
P	LTR	DESCRIPTION	DATE	DWN	APVD
1		ORIGINAL	-	WLY	HENRY
2		CHANGE TO THE TE LOGO	-	YQ	GREG
3		UPDATE THE MARKING	-	YQ	GREG
4		REDRAWN IN CREO	25OCT2018	RS	KP

5/8"-11 TAPPED HOLE  
 0.015" OVERSIZE  
 FULLY THREAD 20mm  
 DEEP EQUI-SPACED, 4 PL.

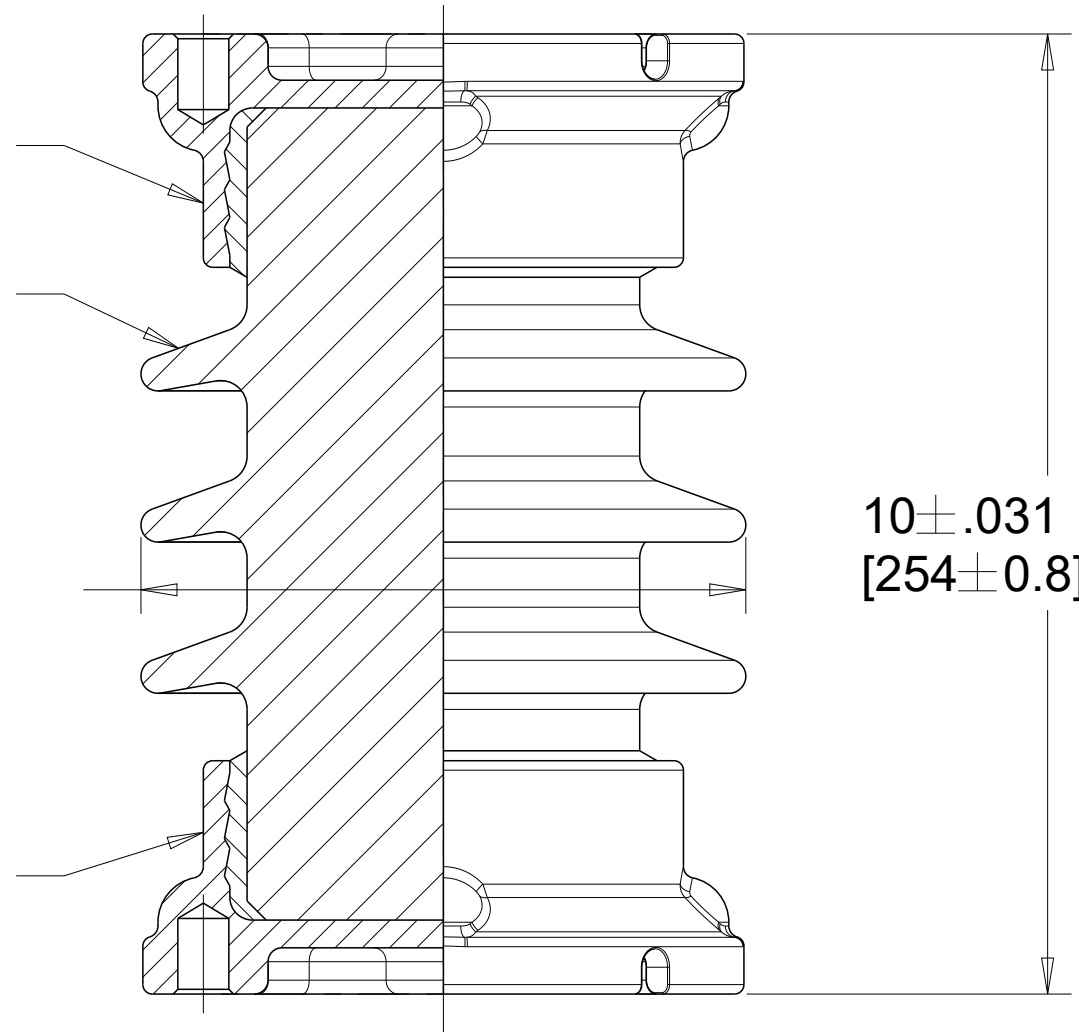


M.C.L. CAP

PORCELAIN

Ø 6.30 [160]

M.C.L. CAP



Notes:

1. All ferrous parts hot-dip galvanized to ASTM A153
2. Additional mark on porcelain: Batch traceability number
3. Reference standard ANSI C29.9
4. Mark on porcelain:



**Mechanical Properties**

Units	English	Metric
Tensile Strength	15,000 lb	66.7 kN
Compression Strength	20,000 lb	89 kN
Torsional Strength	12,000 in-lb	1356 N-m
Cantilever Strength	4,000 lb	17.8 kN

**Electrical Properties**

Critical Impulse Flashover Voltage, Positive	105 kV
Impulse Withstand Voltage	95 kV
Wet p.f. Withstand	30 kV
Radio-Influence Voltage	
Test Voltage to Ground	5 kV
Max RIV at 1000kHz	50 µV

**Physical Properties**

Units	English	Metric
Nominal Creepage Distance	10.51 in	267 mm
Approx Weight	28.66 lb	13 kg
Colour		Grey

TE P/N: CU8888-000

THIS DRAWING IS A CONTROLLED DOCUMENT.		DWN RAVI.S 25OCT2018	TE Connectivity NAME PORCELAIN STATION POST INSULATOR, TR 222					
DIMENSIONS: inch (mm)		CHK K.PUSTHAY 25OCT2018				SIZE A2	CAGE CODE 00779	DRAWING NO. SP-TR222PG
TOLERANCES UNLESS OTHERWISE SPECIFIED:		APVD K.PUSTHAY 25OCT2018				RESTRICTED TO		
0 PLC ± 1 PLC ± 2 PLC ± 3 PLC ± 4 PLC ± ANGLES ± FINISH -		PRODUCT SPEC -				SCALE NTS	SHEET 1 OF 1	REV 4
MATERIAL -	FINISH -	APPLICATION SPEC -	CUSTOMER DRAWING					