

General Specifications

CONTACT ARRANGEMENT	SPDT
FORM	C
TEST VOLTAGE (dc OR 60 Hz, kV PEAK)	11
RATED OPERATING VOLTAGE (dc OR 60 Hz, kV PEAK).....	10
CONTINUOUS CURRENT CARRY, CONTACTS CLOSED. MAX.	
(Adc OR 60 Hz, RMS) RK81C2A5, RK81C3A5, RK81C5A5 (FIG. 1)	20
RK81C235, RK81C335, RK81C535, (FIG. 1)	5
RK81C245, RK81C345, RK81C545, (FIG. 2)	10
CONTACT RESISTANCE, MAX. (OHMS)	0.050
OPERATE TIME, MAX. (ms)	10
RELEASE TIME, MAX. (ms)	10
SHOCK, 11 ms ½ SINE (PEAK G's)	30
VIBRATION, 10G's PEAK (Hz)	55-500
OPERATING TEMPERATURE RANGE (°C)	-55 TO +85
MECHANICAL LIFE (OPERATIONS X 10 ⁶)	2
WEIGHT, MAXIMUM (oz)	2.5

RELAY PART NUMBER			
Outline Per FIG. 1	RK81C2A5 RK81C235	RK81C3A5 RK81C335	RK81C5A5 RK81C535
Outline Per FIG. 2	RK81C245	RK81C345	RK81C545
COIL VOLTAGE, NOMINAL	12	26.5	115
PICK-UP VOLTAGE, MAX. (Vdc)	8	16	80
DROP-OUT VOLTAGE (Vdc)	.5-5	1-10	5-50
COIL RESISTANCE (OHMS +10%)	70	290	4700

Notes:

1. Ratings listed are for 25°C at Sea Level conditions
2. Relay is RoHS compliant.



CUSTOMER DRAWING

SD- RK81C SERIES

THIRD ANGLE PROJECTION


 THIS DRAWING
PREPARED IN
ACCORDANCE WITH
ANSI/ASME Y14.5M-1982

CAGE CODE

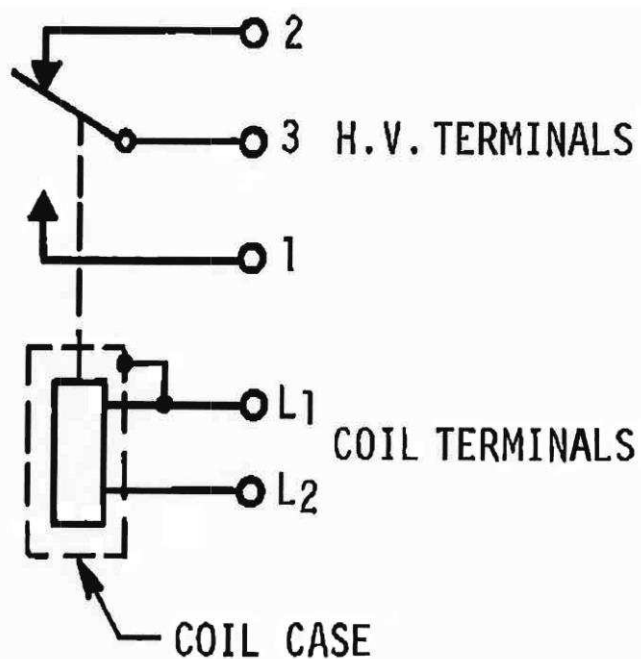
18741

SCALE

NONE

SHEET

1 of 6

Schematic 1**CUSTOMER DRAWING****SD-****RK81C SERIES**

THIRD ANGLE PROJECTION

THIS DRAWING
PREPARED IN
ACCORDANCE WITH
ANSI/ASME Y14.5M-1982

CAGE CODE

18741

SCALE

NONE

SHEET

2 of 6

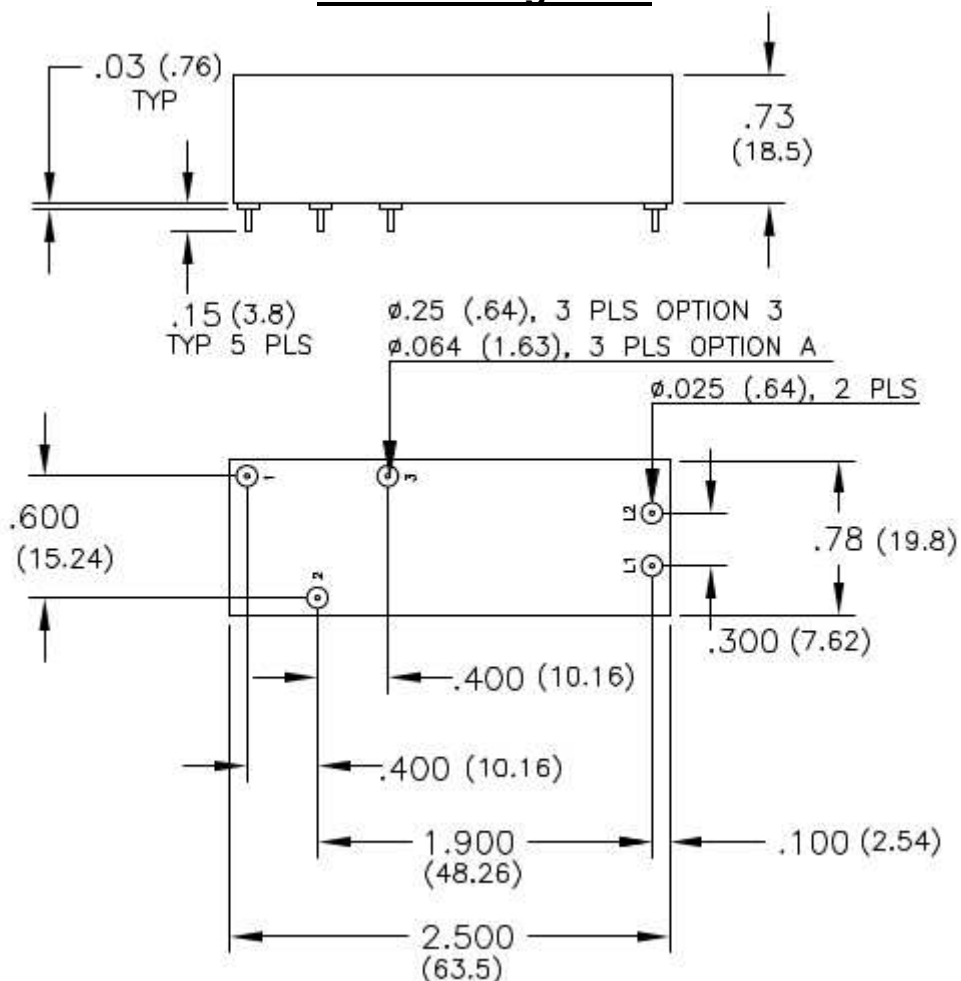
Part Drawing FIG 1

FIGURE 1. OUTLINE FOR PART NUMBERS RK81C2A5, RK81C3A5, RK81C5A5, RK81C235, RK81C335, RK81C535.

Dimensions in Inches

(Dimensions in Parentheses are in Millimeters)

Tolerances except as Noted

.xx = $\pm .03$

.xxx = $\pm .010$

$\angle X^\circ = \pm 5^\circ$

DO NOT SCALE DWG.



CUSTOMER DRAWING

SD- RK81C SERIES

THIRD ANGLE PROJECTION



THIS DRAWING
PREPARED IN
ACCORDANCE WITH
ANSI/ASME Y14.5M-1982

CAGE CODE

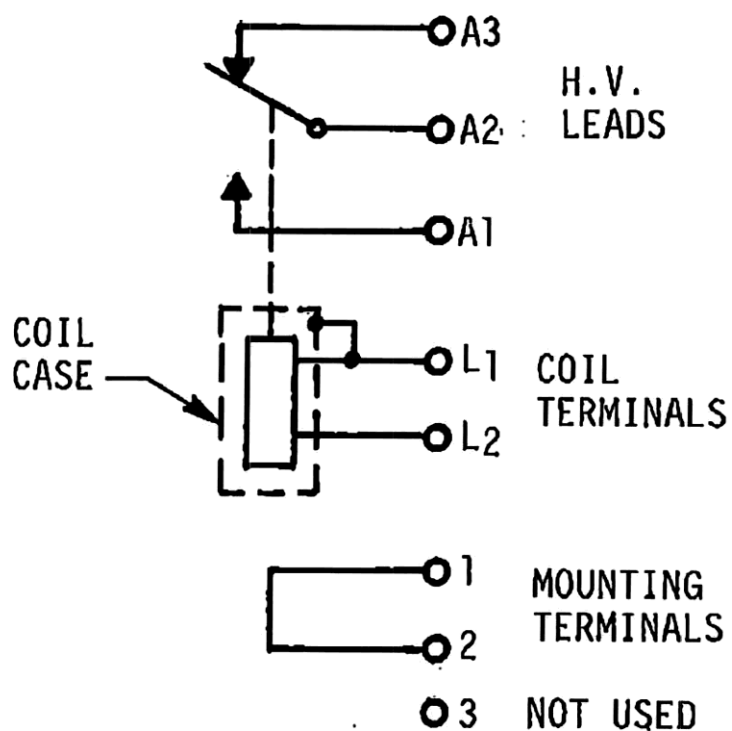
18741

SCALE

NONE

SHEET

3 of 6

Schematic 2**CUSTOMER DRAWING****SD- RK81C SERIES**

THIRD ANGLE PROJECTION

THIS DRAWING
PREPARED IN
ACCORDANCE WITH
ANSI/ASME Y14.5M-1982

CAGE CODE

18741

SCALE

NONE

SHEET

4 of 6

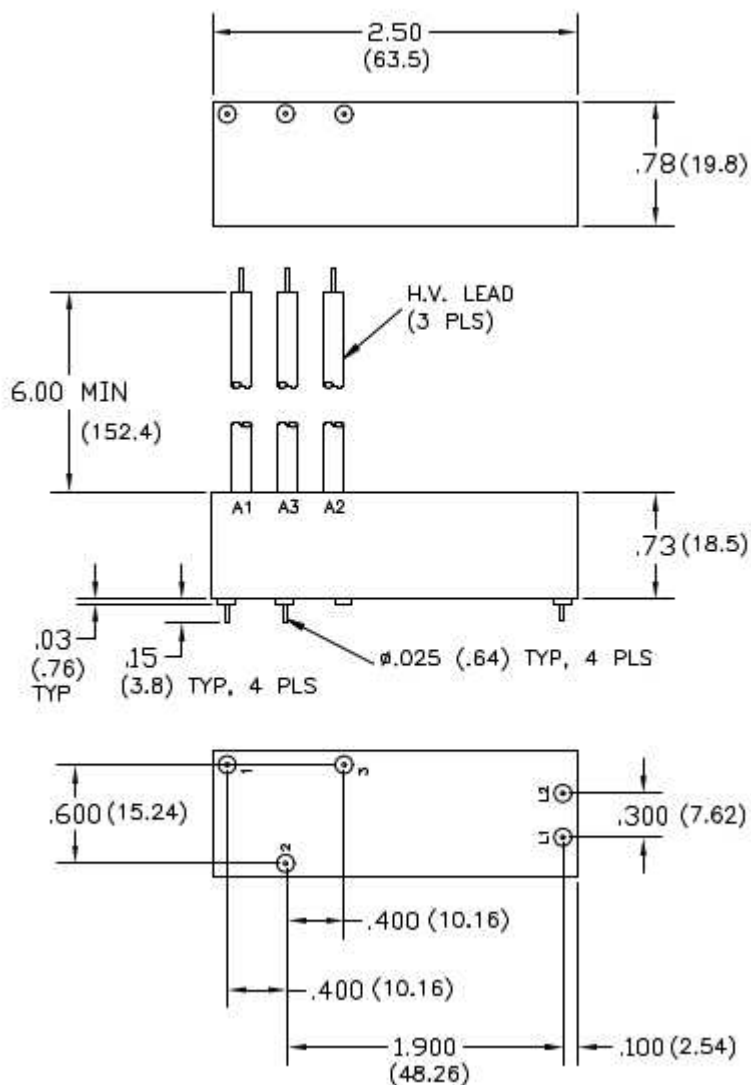
Part Drawing FIG 2

FIGURE 2. OUTLINE FOR PART NUMBERS RK81C245, RK81C345, RK81C545

Dimensions in Inches

(Dimensions in Parentheses are in Millimeters)

Tolerances except as Noted

.xx = $\pm .03$.xxx = $\pm .010$ $\angle X^\circ = \pm 5^\circ$

DO NOT SCALE DWG.

**CUSTOMER DRAWING****SD-****RK81C SERIES**

THIRD ANGLE PROJECTION

THIS DRAWING
PREPARED IN
ACCORDANCE WITH
ANSI/ASME Y14.5M-1982

CAGE CODE

18741

SCALE

NONE

SHEET

5 of 6

Revision Status

REV.	DESCRIPTION	DCO	DATE	APP.
A	INITIAL RELEASE	16305	05-28-15	JR
B	CLARIFY PIN DIMENSIONS ON FIG. 1	16498	06-11-19	JR

**CUSTOMER DRAWING****SD- RK81C SERIES**

THIRD ANGLE PROJECTION

THIS DRAWING
PREPARED IN
ACCORDANCE WITH
ANSI/ASME Y14.5M-1982

CAGE CODE

18741

SCALE

NONE

SHEET

6 of 6