

General Specifications

CONTACT ARRANGEMENT	SPDT-NO
FORM	A
TEST VOLTAGE (dc OR 60 Hz, kV PEAK)	11
RATED OPERATING VOLTAGE (dc OR 60 Hz, kV PEAK)	10
CONTINUOUS CURRENT CARRY, CONTACTS CLOSED. (AMPS MAX.)	
(Adc OR 60 Hz, RMS) HV Connection option 3 ...(See next page)	5
HV Connection option A	20
HV Connection option 4 or 5	30
CONTACT RESISTANCE, MAX. (OHMS)	
RK81A235, RK81A335, RK81A535, RK81AA57, RK81AB57, RK81AC57.....	0.030
RK81A245, RK81A345, RK81A545, RK81AA47, RK81AB47, RK81AC47.....	0.050
OPERATE TIME, MAX. (ms)	10
RELEASE TIME, MAX. (ms)	10
SHOCK, 11 ms ½ SINE (PEAK G's)	30
VIBRATION, 10G's PEAK (Hz)	55-500
OPERATING TEMPERATURE RANGE (°C)	-55 TO +85
MECHANICAL LIFE (OPERATIONS X 10⁶)	2
WEIGHT, MAXIMUM (oz)	2

RELAY PART NUMBER			
Outline Per FIG. 1	RK81A235	RK81A335	RK81A535
Outline Per FIG. 2	RK81A245	RK81A345	RK81A545
Outline Per FIG. 3	RK81AA47	RK81AB47	RK81AC47
Outline Per FIG. 4	RK81AA57	RK81AB57	RK81AC57
COIL VOLTAGE, NOMINAL	12	26.5	115
PICK-UP VOLTAGE, MAX. (Vdc)	8	16	80
DROP-OUT VOLTAGE (Vdc)	.5-5	1-10	5-50
COIL RESISTANCE (OHMS +10%)	70	290	4700

Notes:

1. Ratings listed are for 25°C at Sea Level conditions
2. RK81 A-07 is same as RK81A345 except HV leads are 10" [see Figure 2]
3. Relays are RoHS compliant

**CUSTOMER DRAWING****SD- RK81A SERIES**

THIRD ANGLE PROJECTION



THIS DRAWING
PREPARED IN
ACCORDANCE WITH
ANSI/ASME Y14.5M-1982

CAGE CODE

SX916

SCALE

FULL

SHEET

1 of 7

Note:

4. PC pin versions carry 5 or 20 Amps see part number below.
Flying lead and panel versions carry 30 Amp.

*Power terminal on 20 Amp version is a larger diameter than on the 5 Amp version (.025 = 5 Amp, .064 = 20 Amp)

Ordering Information**Sample Part Number** ►**RK81 A 3 3 5****RoHS Series:** _____**Contact Form:** _____

A = SPST-NO

B = SPST-NC

Coil Voltage: _____

2 = 12 Vdc, PC Board 3 = 26.5 Vdc, PC Board

5 = 115 Vdc, PC Board

A = 12 Vdc, Stud Terminals, Panel Mount

B = 26.5 Vdc, Stud Terminals, Panel Mount

C = 115 Vdc, Stud Terminals, Panel Mount

High Voltage Connections: _____

A* = PCB Solder Connection — 20 Amp

3 = PCB Solder Connection — 5 Amp

4 = Flying Leads

5 = Stud Terminals

Mounting: _____

5 = PC Board

7 = Panel Mount

**CUSTOMER DRAWING****SD-****RK81A SERIES**

THIRD ANGLE PROJECTION



THIS DRAWING
PREPARED IN
ACCORDANCE WITH
ANSI/ASME Y14.5M-1982

CAGE CODE

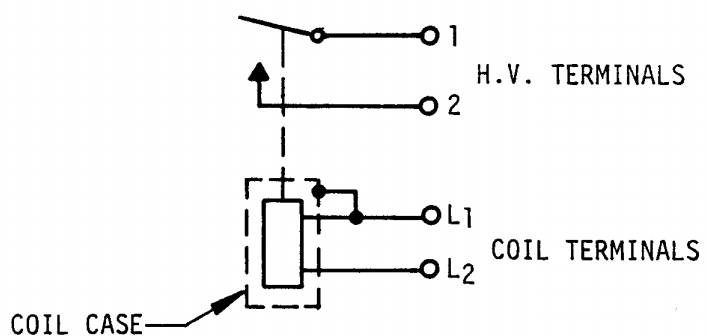
SX916

SCALE

FULL

SHEET

2 of 7



SCHEMATIC

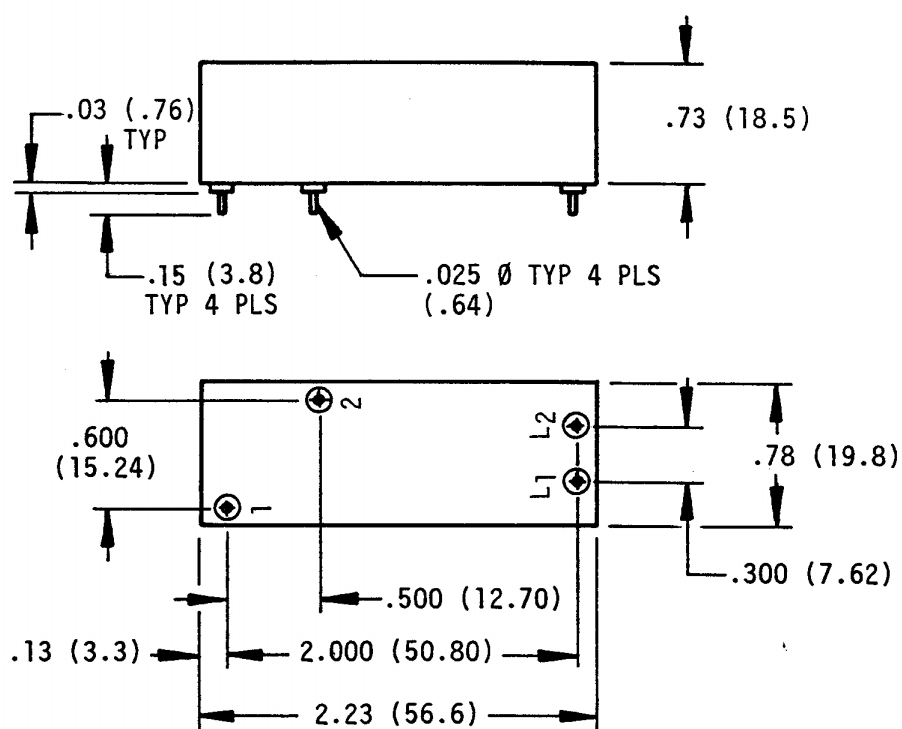


FIG. 1 OUTLINE FOR PART NUMBERS RK81A235, RK81A335, RK81A535



CUSTOMER DRAWING

SD-**RK81A SERIES**

THIRD ANGLE PROJECTION



THIS DRAWING
PREPARED IN
ACCORDANCE WITH
ANSI/ASME Y14.5M-1982

CAGE CODE

SX916

SCALE

FULL

SHEET

3 of 7

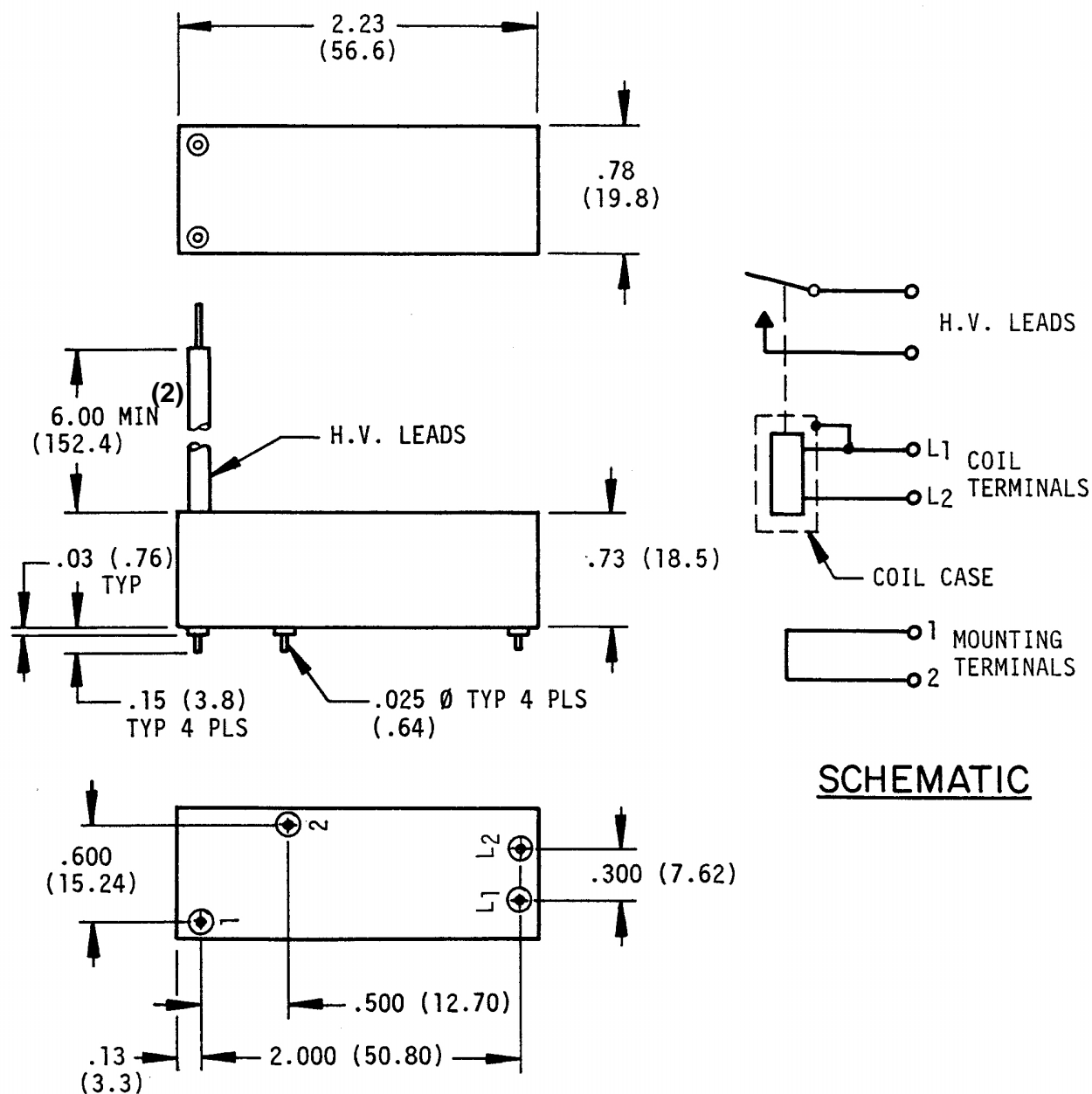


FIG. 2 OUTLINE FOR PART NUMBERS RK81A245, RK81A345, RK81A545



CUSTOMER DRAWING

SD-

RK81A SERIES

THIRD ANGLE PROJECTION



THIS DRAWING
PREPARED IN
ACCORDANCE WITH
ANSI/ASME Y14.5M-1982

CAGE CODE

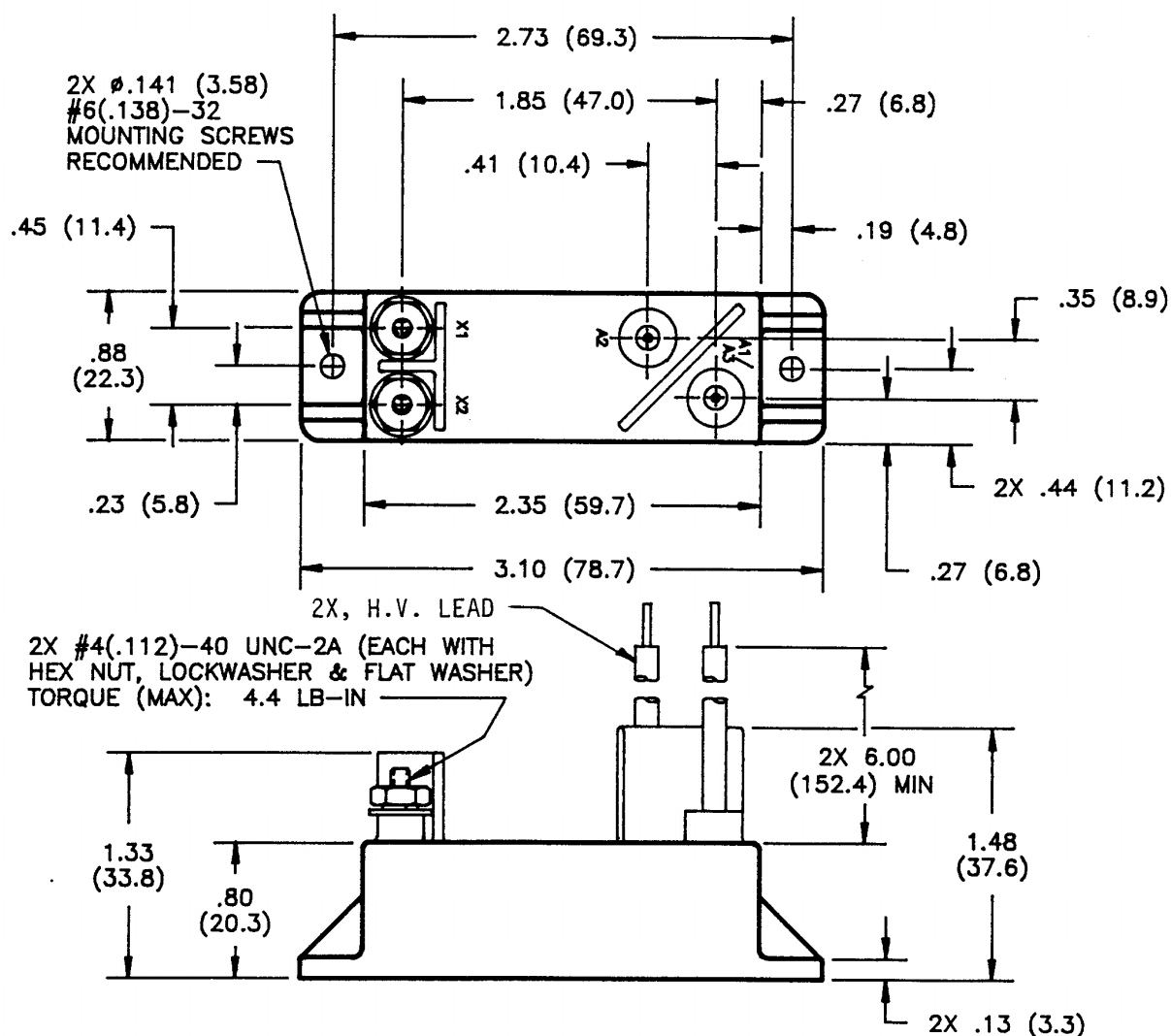
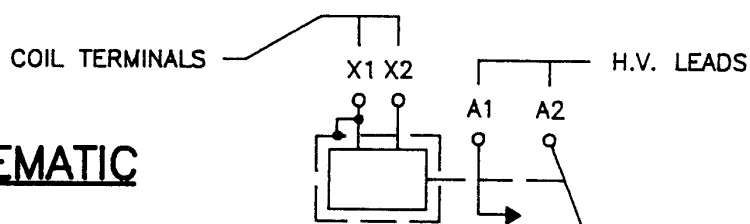
SX916

SCALE

FULL

SHEET

4 of 7

SCHEMATIC**FIG. 3** OUTLINE FOR PART NUMBERS RK81AA47, RK81AB47, RK81AC47**CUSTOMER DRAWING****SD-****RK81A SERIES**

THIRD ANGLE PROJECTION

THIS DRAWING
PREPARED IN
ACCORDANCE WITH
ANSI/ASME Y14.5M-1982

CAGE CODE

SX916

SCALE

FULL

SHEET

5 of 7

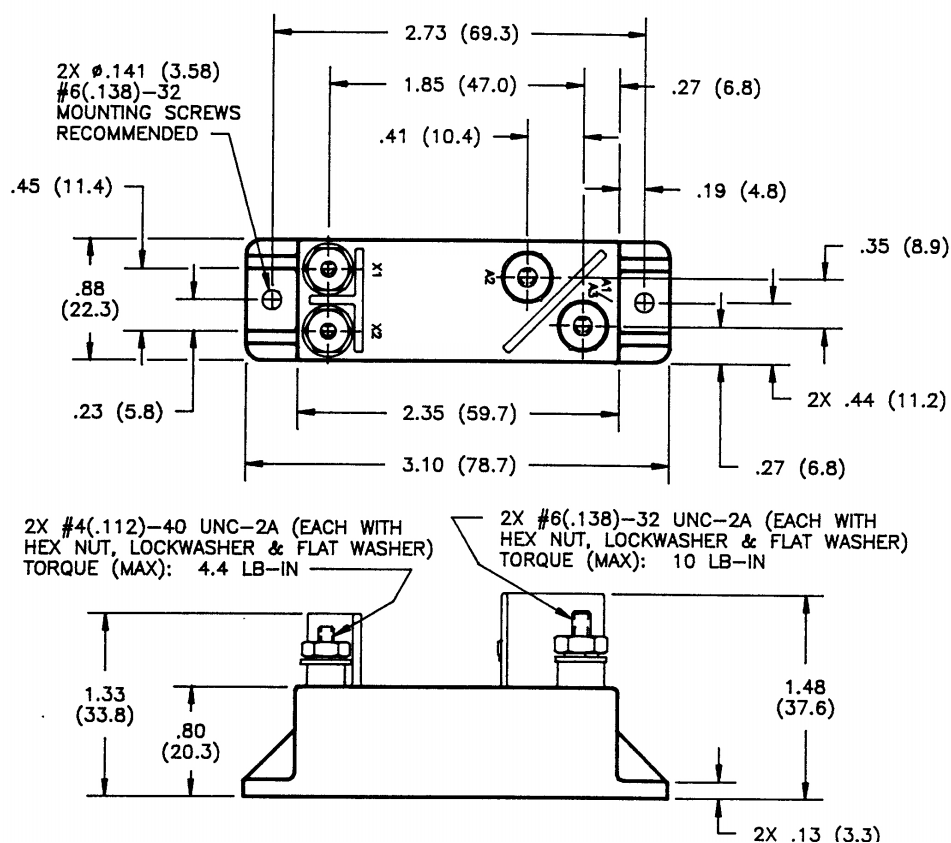
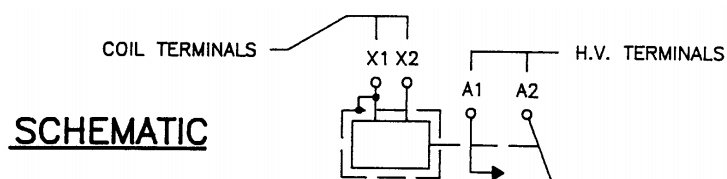


FIG. 4 OUTLINE FOR PART NUMBERS RK81AA57, RK81AB57, RK81AC57



CUSTOMER DRAWING

SD- RK81A SERIES

THIRD ANGLE PROJECTION



THIS DRAWING
PREPARED IN
ACCORDANCE WITH
ANSI/ASME Y14.5M-1982

CAGE CODE

SX916

SCALE

FULL

SHEET

6 of 7

REV.
A

REVISION STATUS

REV.	DESCRIPTION	DCO	DATE	APP.
A	INITIAL RELEASE	16346	01/19/16	JR



CUSTOMER DRAWING

SD- RK81A SERIES

THIRD ANGLE PROJECTION



THIS DRAWING
PREPARED IN
ACCORDANCE WITH
ANSI/ASME Y14.5M-1982

CAGE CODE

SX916

SCALE

FULL

SHEET

7 of 7