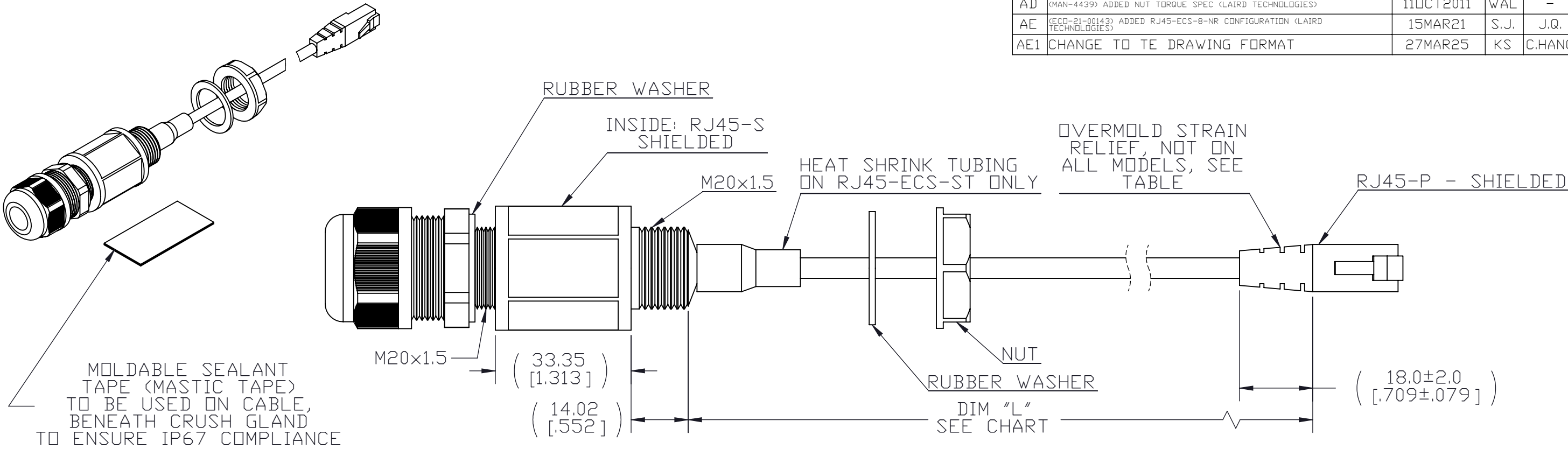


REVISIONS

REV	DESCRIPTION	DATE	DWN	APVD
AD	⟨MAN-4439⟩ ADDED NUT TORQUE SPEC ⟨LAIRD TECHNOLOGIES⟩	11OCT2011	WAL	-
AE	⟨ECO-21-00143⟩ ADDED RJ45-ECS-8-NR CONFIGURATION ⟨LAIRD TECHNOLOGIES⟩	15MAR21	S.J.	J.Q.
AE1	CHANGE TO TE DRAWING FORMAT	27MAR25	KS	C.HANG



CONFIGURATION TABLE		
MODEL NUMBER	DIMENSION "L"	COMMENTS
RJ45-ECS	305.0 +15.0/-5.0	
RJ45-ECS-4	101.6 +15.0/-5.0	
RJ45-ECS-6	152.4 +15.0/-5.0	
RJ45-ECS-ST	305.0 +15.0/-5.0	W/SHRINK TUBING
RJ45-ECS-NR	305.0 +15.0/-5.0	NO STRAIN RELIEF
RJ45-ECS-4-NR	101.6 +15.0/-5.0	NO STRAIN RELIEF
RJ45-ECS-6-NR	152.4 +15.0/-5.0	NO STRAIN RELIEF
RJ45-ECS-8-NR	203.2 +15.0/-5.0	NO STRAIN RELIEF

DATA	10BASET, 100BASET AND 1000BASET NETWORKS CAT5E PER TIA/EIA 568B CLASSD PER ISO/IEC 11801
MECHANICAL	MATING CYCLES >500 POSITIVE RJ45 BAYONET COUPLING CAT5 CABLE STRAIN RELIEF
MATERIAL	UV RESISTANT NYLON 66
SEALING	IP67 (MASTIC TAPE SHOULD BE USED TO ACHIEVE)
SALT SPRAY	>1000H
FLAMMABILITY	UL94V0
THERMAL SHOCK	10 CYCLES -40 TO +100 DEG C
TEMPERATURE RANGE	-40 DEG C TO +85 DEG C
INSTALLATION HOLE DIA.	20mm
NUT TORQUE	6 ± 1 IN-LBF

THIS DRAWING IS A CONTROLLED DOCUMENT.		DWN S. JOHNSON CHK YJ TEQH APVD C.HANG PRODUCT SPEC REFER TABLE APPLICATION SPEC N/A WEIGHT REFER TABLE CUSTOMER DRAWING	13MAY2009 13MAY2009 13MAY2009	NAME RJ45,ECS,24in,		SIZE A3	CAGE CODE 00779	DRAWING NO C-RJ45-ECSMD-L	RESTRICTED TO
DIMENSIONS: mm[INCH]	TOLERANCES UNLESS OTHERWISE SPECIFIED: 0 PLC ± 0.5 1 PLC ± 0.25 2 PLC ± 0.130 3 PLC ± 4 PLC ± ANGLES ± 30'	TE Connectivity		SCALE 1:1		SHEET 1 OF 1	REV AE1		
MATERIAL N/A	FINISH N/A								