

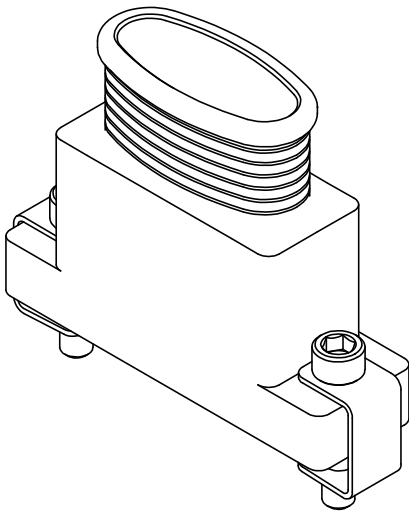
RELEASED FOR PUBLICATION

ALL RIGHTS RESERVED.

THIS DRAWING IS UNPUBLISHED.

COPYRIGHT 20 BY

REVISIONS				
REV	DESCRIPTION	DATE	DRAWN	APPD
AA	INITIAL RELEASE	05/08/2019	DIW	RS
AB	ECR7259	05/09/2019	DIW	RS
AC	CRN26424	14/05/2024	DIW	RS
AD	CRN26764	03/10/2024	DIW	RS


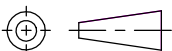


MICRO-MINIATURE BACKSHELL WITH MICRO BAND SCREENED CABLE TERMINATION

EXAMPLE PART DESCRIPTION: MB MMD - U D S M S 0 - 05 - 30 - 1 - C - S

TERMINATION SERIES _____
(MB - MICRO BAND)
CONNECTOR _____
(SEE NOTE 2)
ENTRY POSITION _____
SHELL SIZE _____
SHELL STYLE _____
INTERFACE VARIANT _____
FLANGE STYLE _____
GROUNDING OPTION _____
ENTRY SIZE _____
MAIN BODY HEIGHT IN mm _____
MATERIAL (REFER TO SS0076) _____
PLATING/FINISH (REFER TO SS0076) _____
HARDWARE OPTION _____

- NOTES.
- 1. THIS PRODUCT IS DESIGNED TO TERMINATE A BRAIDED CABLE SHIELD TO A CONNECTOR.
 - 2. THIS PRODUCT IS DESIGNED TO MATE WITH CONNECTORS CONFORMING TO:
 - 1. MIL-DTL-83513/1, /2, /3 AND /4, SHELL SIZES A, B, C, D, E, F, G AND H
 - 3. BACKSHELL TO BE PERMANENTLY MARKED WITH PART NUMBER AND BATCH CODE (e.g. MBMMD-UDSMS0-05-30-1-C-S Pxxxxxx - WHERE Pxxxxxx IS BATCH CODE) AND BAGGED/LABELLED WITH CODE IDENTIFICATION NUMBER, PART NUMBER AND BATCH CODE (e.g. U5792 - MBMMD-UDSMS0-05-30-1-C-S Pxxxxxx)

DIMENSIONS: MILLIMETERS	DWN: D. WRIGLEY	05/08/2019	MATERIAL:		FINISH:	
	CHK: R. STYLES	13/08/2019	<div> TE Connectivity</div>			
TOLERANCES UNLESS OTHERWISE SPECIFIED: GENERAL TOL LINEAR $\pm 0.25\text{MM}$ ANGULAR $\pm 1^\circ$	APVD: M. PAUL	05/08/2019				
	PRODUCT SPEC: -	NAME: MICRO BAND TERMINATION MICRO MINIATURE BACKSHELL				
	APPLICATION SPEC: -					
	WEIGHT:	SIZE A4	CAGE CODE U5792	DRAWING NO C-P43735		RESTRICTED TO
	CUSTOMER DRAWING			SCALE 2:1	SHEET 1 OF 6	REV AD

REVISIONS - SEE SHEET 1

PART NUMBER BREAKDOWN STANDARD VARIABLES

ENTRY POSITION (SEE SHEET 3):

- U - TOP ENTRY
- F - END 45° ENTRY
- E - END 90° ENTRY
- J - SIDE 45° ENTRY
- S - SIDE 90° ENTRY

SHELL SIZE:

- A, B, C, D, E, F, G, H

SHELL STYLE:

- S - SINGLE PIECE BODY

INTERFACE VARIANT:

- M - MIRRORED

FLANGE STYLE:

- S - STANDARD FLANGE (SEE SHEET 4)

GROUNDING OPTION:

- 0 - NO GROUNDING (INTERNAL GROUNDING NOT PROVIDED ON MICRO MINIATURE BACKSHELLS)

ENTRY SIZE:

- 02 - 11 (SEE SHEET 5)

MAIN BODY HEIGHT IN mm:

MINIMUM HEIGHT SHOWN ON ENTRY SIZE TABLE 1 AND ENTRY SIZE TABLE 2 ON SHEET 5; MAXIMUM HEIGHT = 60mm; INCREMENTS OF 5mm

MATERIAL:

PLEASE REFER TO SS0076

PLATING/FINISH:

PLEASE REFER TO SS0076

HARDWARE OPTION:

- O, S, H, E, F (SEE SHEET 6)


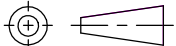

RELEASED FOR PUBLICATION

ALL RIGHTS RESERVED.

THIS DRAWING IS UNPUBLISHED.

COPYRIGHT 20 BY

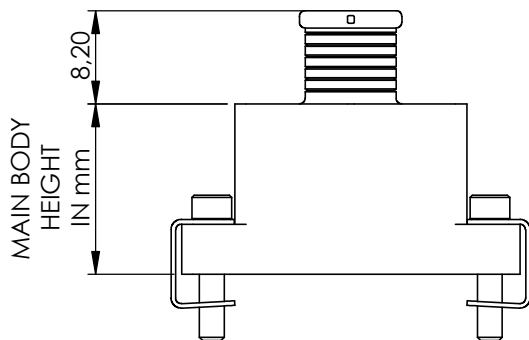


DIMENSIONS: MILLIMETERS	DWN: D. WRIGLEY	05/08/2019	MATERIAL:		FINISH:		
	CHK: R. STYLES	13/08/2019	 TE Connectivity				
	APVD: M. PAUL	05/08/2019					
	TOLERANCES UNLESS OTHERWISE SPECIFIED: GENERAL TOL LINEAR ± 0.25 MM ANGULAR $\pm 1^\circ$	PRODUCT SPEC:		PART NUMBER: MBMMD SERIES			
		APPLICATION SPEC:		NAME: MICRO BAND TERMINATION MICRO MINIATURE BACKSHELL			
WEIGHT:		SIZE	CAGE CODE	DRAWING NO	RESTRICTED TO		
	CUSTOMER DRAWING		A4	U5792	 P43735		
			SCALE	2:1	SHEET	2 OF 6	
				REV	AD		

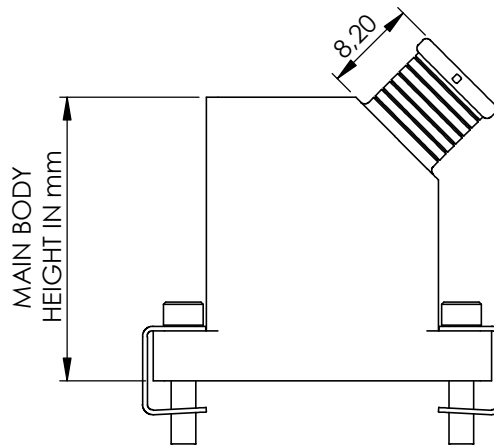
REVISIONS - SEE SHEET 1

ENTRY POSITION

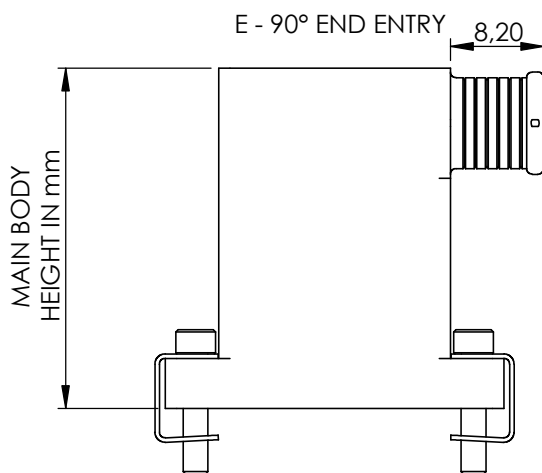
U - TOP ENTRY



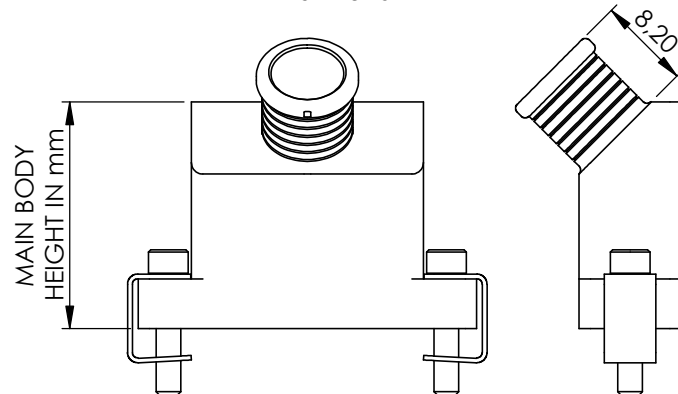
F - 45° END ENTRY



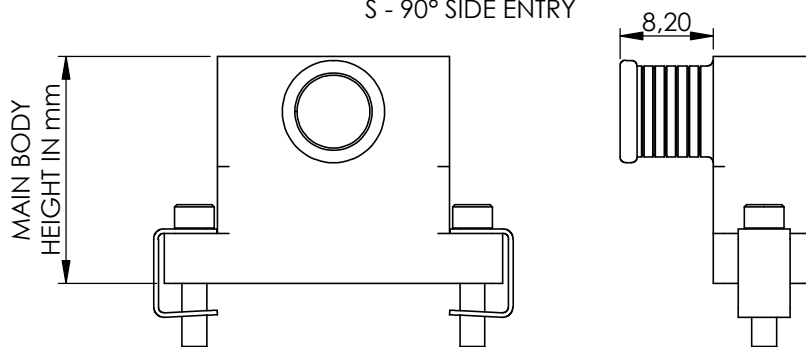
E - 90° END ENTRY



J - 45° SIDE ENTRY



S - 90° SIDE ENTRY



THIS DRAWING IS UNPUBLISHED.

RELEASED FOR PUBLICATION.

ALL RIGHTS RESERVED.

COPYRIGHT 20 BY

DIMENSIONS:
MILLIMETERS

DWN: D. WRIGLEY

05/08/2019

MATERIAL:

FINISH:

TOLERANCES UNLESS
OTHERWISE SPECIFIED:

CHK: R. STYLES

13/08/2019



TE Connectivity

APVD: M. PAUL

05/08/2019

PART NUMBER:

MBMMD SERIES

GENERAL TOL
LINEAR ± 0.25 MM
ANGULAR $\pm 1^\circ$

PRODUCT SPEC:

NAME:

MICRO BAND TERMINATION MICRO MINIATURE BACKSHELL

APPLICATION SPEC:

SIZE

CAGE CODE

DRAWING NO

RESTRICTED TO

WEIGHT:

A4

U5792

C-P43735

CUSTOMER DRAWING

SCALE

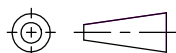
1.5:1

SHEET

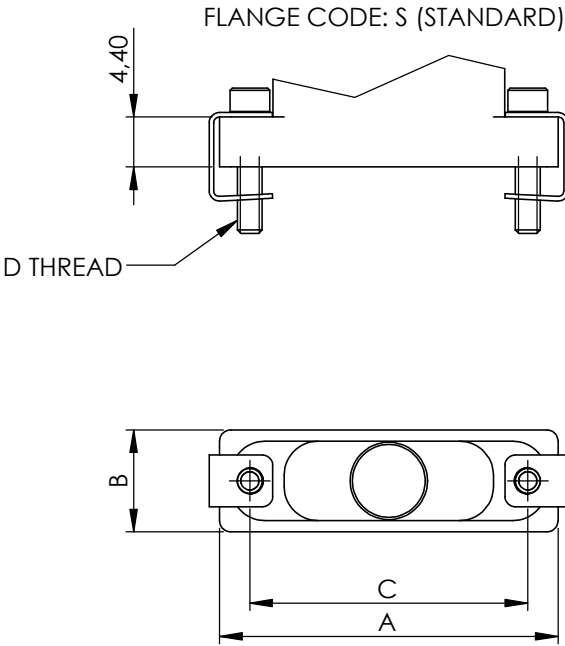
3 OF 6

REV

AD



REVISIONS - SEE SHEET 1



SHELL SIZE	CONNECTOR REF.	A	B	C	D THREAD
A	09	19,68	9,00	14,35	2-56 UNC - 2A
B	15	23,50	9,00	18,16	
C	21	27,30	9,00	21,97	
D	25	29,84	9,00	24,51	
E	31	33,66	9,00	28,32	
F	37	37,46	9,00	32,13	
G	51	36,20	10,00	30,86	
H	100	54,86	11,00	45,72	4-40 UNC - 2A

RELEASED FOR PUBLICATION

ALL RIGHTS RESERVED.

THIS DRAWING IS UNPUBLISHED.

COPYRIGHT 20 BY

DIMENSIONS: MILLIMETERS	DWN: D. WRIGLEY 05/08/2019	MATERIAL:	FINISH:	
	CHK: R. STYLES 13/08/2019	TE Connectivity		
TOLERANCES UNLESS OTHERWISE SPECIFIED: GENERAL TOL LINEAR $\pm 0,25\text{MM}$ ANGULAR $\pm 1^\circ$	APVD: M. PAUL 05/08/2019			
	PRODUCT SPEC:	NAME: MICRO BAND TERMINATION MICRO MINIATURE BACKSHELL		
	APPLICATION SPEC:			
	WEIGHT:	SIZE A4	CAGE CODE U5792	DRAWING NO C-P43735
CUSTOMER DRAWING		SCALE 1.5:1	SHEET 4 OF 6	REV AD

REVISIONS - SEE SHEET 1

AVAILABLE ENTRY SIZES

SHELL SIZE	CONNECTOR REF.	U - TOP ENTRY		F - 45° END ENTRY		E - 90° END ENTRY		J - 45° SIDE ENTRY		S - 90° SIDE ENTRY	
		CIRCULAR	ELLIPTICAL	CIRCULAR	ELLIPTICAL	CIRCULAR	ELLIPTICAL	CIRCULAR	ELLIPTICAL	CIRCULAR	ELLIPTICAL
A	09	02 - 04	NA	02 - 04	NA	02 - 04	NA	02 - 04	NA	02 - 04	NA
B	15	02 - 04	05	02 - 04	05	02 - 04	05	02 - 04	05	02 - 04	05
C	21	02 - 04	05 - 06	02 - 04	05 - 06	02 - 04	05 - 06	02 - 04	05 - 06	02 - 04	05 - 06
D	25	02 - 04	05 - 06	02 - 04	05 - 06	02 - 04	05 - 06	02 - 04	05 - 06	02 - 04	05 - 06
E	31	02 - 04	05 - 07	02 - 04	05 - 07	02 - 04	05 - 07	02 - 04	05 - 07	02 - 04	05 - 07
F	37	02 - 04	05 - 08	02 - 04	05 - 08	02 - 04	05 - 08	02 - 04	05 - 08	02 - 04	05 - 08
G	51	02 - 05	06 - 08	02 - 05	06 - 08	02 - 05	06 - 08	02 - 05	06 - 08	02 - 05	06 - 08
H	100	02 - 05	06 - 11	02 - 05	06 - 11	02 - 05	06 - 11	02 - 05	06 - 11	02 - 05	06 - 11



ENTRY SIZE TABLE 1 - CIRCULAR ENTRY ONLY

ENTRY SIZE (CIRCULAR)	DIA Z MIN	U - TOP ENTRY MINIMUM MAIN BODY HEIGHT IN mm	F - 45° END ENTRY MINIMUM MAIN BODY HEIGHT IN mm	E - 90° END ENTRY MINIMUM MAIN BODY HEIGHT IN mm	J - 45° SIDE ENTRY MINIMUM MAIN BODY HEIGHT IN mm	S - 90° SIDE ENTRY MINIMUM MAIN BODY HEIGHT IN mm
02	3,18	15,0	25,0	25,0	20,0	20,0
03	4,77	15,0	25,0	30,0	20,0	20,0
04	6,35	15,0	25,0	30,0	20,0	20,0
05	7,93	15,0	30,0	30,0	20,0	20,0

ENTRY SIZE TABLE 2 - ELLIPTICAL ENTRY ONLY

ENTRY SIZE (ELLIPTICAL)	X MIN	Y MIN	U - TOP ENTRY MINIMUM MAIN BODY HEIGHT IN mm	F - 45° END ENTRY MINIMUM MAIN BODY HEIGHT IN mm	E - 90° END ENTRY MINIMUM MAIN BODY HEIGHT IN mm	J - 45° SIDE ENTRY MINIMUM MAIN BODY HEIGHT IN mm	S - 90° SIDE ENTRY MINIMUM MAIN BODY HEIGHT IN mm
05	10,70	6,00	15,0	30,0	35,0	20,0	20,0
06	15,00	6,00	15,0	30,0	40,0	20,0	20,0
07	20,00	6,00	15,0	35,0	45,0	20,0	20,0
08	25,00	6,00	15,0	40,0	50,0	20,0	20,0
08*	23,50	6,50	15,0	40,0	50,0	20,0	20,0
09	25,00	8,00	15,0	40,0	50,0	20,0	20,0
10	31,00	8,00	15,0	45,0	55,0	20,0	20,0
11	36,00	8,00	15,0	45,0	60,0	20,0	20,0

* - ENTRY SIZE DIMENSIONS APPLY TO SHELL SIZES G AND H ONLY

RELEASED FOR PUBLICATION

ALL RIGHTS RESERVED.

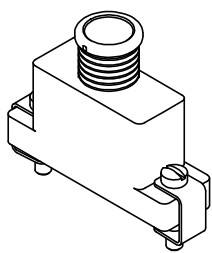
THIS DRAWING IS UNPUBLISHED.

COPYRIGHT 20 BY

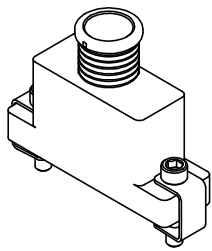
DIMENSIONS: MILLIMETERS TOLERANCES UNLESS OTHERWISE SPECIFIED: GENERAL TOL LINEAR $\pm 0,25\text{MM}$ ANGULAR $\pm 1^\circ$	DWN: D. WRIGLEY 05/08/2019		MATERIAL:		FINISH:	
	CHK: R. STYLES 13/08/2019		TE Connectivity			
	APVD: M. PAUL 05/08/2019					
	PRODUCT SPEC:		PART NUMBER: MBMMD SERIES			
	APPLICATION SPEC:		NAME: MICRO BAND TERMINATION MICRO MINIATURE BACKSHELL			
	WEIGHT:		SIZE: A4	CAGE CODE: U5792	DRAWING NO: C-P43735	RESTRICTED TO:
	CUSTOMER DRAWING			SCALE: 1.5:1	SHEET: 5 OF 6	REV: AD

REVISIONS - SEE SHEET 1

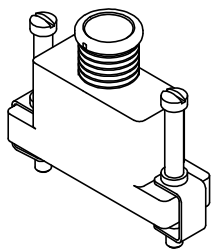
HARDWARE OPTIONS



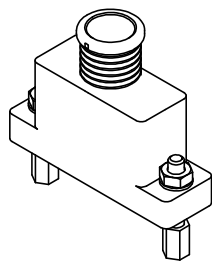
HARDWARE OPTION CODE: S
SLOTTED HEAD JACKSCREW RETAINED WITH 'OVER-END' CLIP
MATERIAL: STAINLESS STEEL, PASSIVATE FINISH
NOT RECOMMENDED FOR USE WITH ENTRY POSITIONS F AND E



HARDWARE OPTION CODE: H
HEX DRIVE SOCKET HEAD JACKSCREW RETAINED WITH 'OVER-END' CLIP
MATERIAL: STAINLESS STEEL, PASSIVATE FINISH




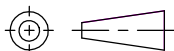
HARDWARE OPTION CODE: E
EXTENDED SLOTTED HEAD JACKSCREW RETAINED WITH 'OVER-END' CLIP
MATERIAL: STAINLESS STEEL, PASSIVATE FINISH
NOT AVAILABLE FOR ENTRY POSITIONS E AND F



HARDWARE OPTION CODE: F
FEMALE THREAD JACKPOST
MATERIAL: STAINLESS STEEL, PASSIVATE FINISH

HARDWARE OPTION CODE: 0 (ZERO)
BACKSHELL SUPPLIED WITHOUT HARDWARE

THIS DRAWING IS UNPUBLISHED.
COPYRIGHT 20 BY
ALL RIGHTS RESERVED.

DIMENSIONS: MILLIMETERS	DWN: D. WRIGLEY	05/08/2019	MATERIAL:		FINISH:					
	CHK: R. STYLES	13/08/2019	<div> TE Connectivity</div>							
TOLERANCES UNLESS OTHERWISE SPECIFIED: GENERAL TOL LINEAR $\pm 0.25\text{MM}$ ANGULAR $\pm 1^\circ$	APVD: M. PAUL	05/08/2019					PART NUMBER:		MBMMD SERIES	
	PRODUCT SPEC:		NAME: MICRO BAND TERMINATION MICRO MINIATURE BACKSHELL							
	-									
	APPLICATION SPEC:		SIZECAGE CODEDRAWING NORESTRICTED TO							
	-									
WEIGHT:		A4	U5792	C=P43735						
	CUSTOMER DRAWING				SCALE	1:1	SHEET	6 OF 6	REV	AD