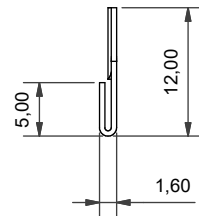
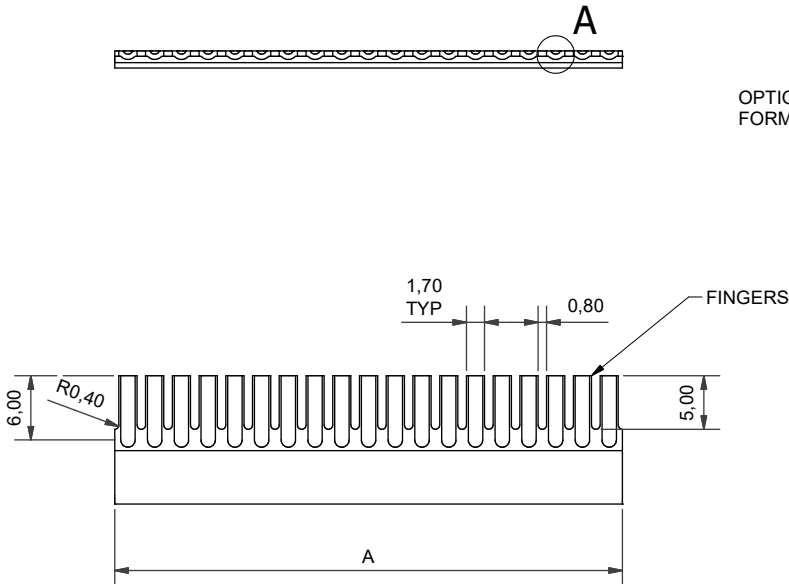
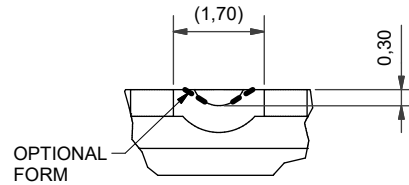


A FINGERNAIL FEATURE



100P2627HD-25COMB

BASIC SERIES
 HIGH DENSITY VERSION
 SHELL SIZE (SEE TABLE)
 COMPONENT IDENTIFIER

SHELL SIZE	A	NO. OF FINGERS
09	14,64	6
15	22,26	9
25	34,96	14
37	47,46	19

NOTES:

1. MATERIAL: BSEN 1652:1998 - CuZn37 CW508; 0,50mm THICK
2. FINISH: SILVER PLATE 0,005mm.
3. PARTS TO BE FREE FROM GREASE AND CONTAMINATION; DO NOT HANDLE WITH BARE HANDS

DRAWN		DATE			PART NUMBER:		 100P2627HD-**COMB SERIES			
DIW		04/12/2018			TITLE:					
APPROVED BY		08/10/2018		UNLESS OTHERWISE SPECIFIED ALL DIMENSIONS IN MILLIMETRES GENERAL TOL LINEAR +/-0.25MM ANGULAR +/- 1°	HIGH DENSITY RFI COMB					
M.PAUL		08/10/2018								
CHECKED BY		04/12/2018		MATERIAL SEE NOTES FINISH SEE NOTES	ASSY USED ON: D-SUB BACKSHELLS		RESTRICTED TO:		DRAWING NO: P18027	
R. STYLES		04/12/2018								
DOC TYPE		Customer Drawing								
ISSUE/REV		DCR								
AB		ECR-21-124054		THIS DRAWING IS COPYRIGHT AND THE PROPERTY OF POLAMCO LTD IT MUST NOT BE COPIED, USED FOR MANUFACTURE OR OTHERWISE DISCLOSED WITHOUT PRIOR WRITTEN CONSENT OF THE COMPANY.		POLAMCO LTD, WESTON LOCK, LOWER BRISTOL ROAD BATH BA2 1EP		SHT 1		
NCAGE CODE U5792		WEIGHT N/A								