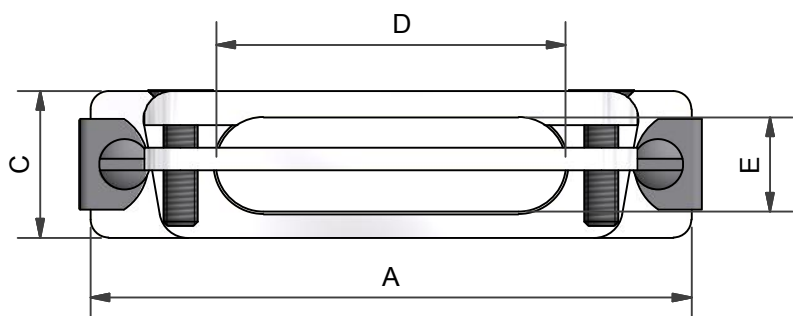
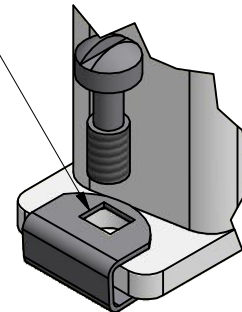
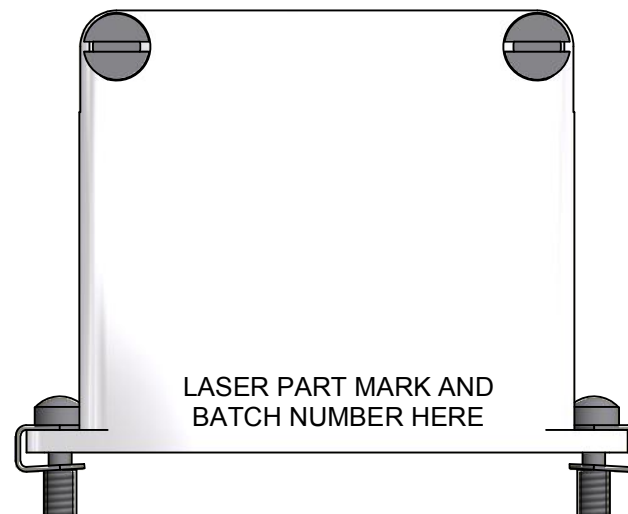
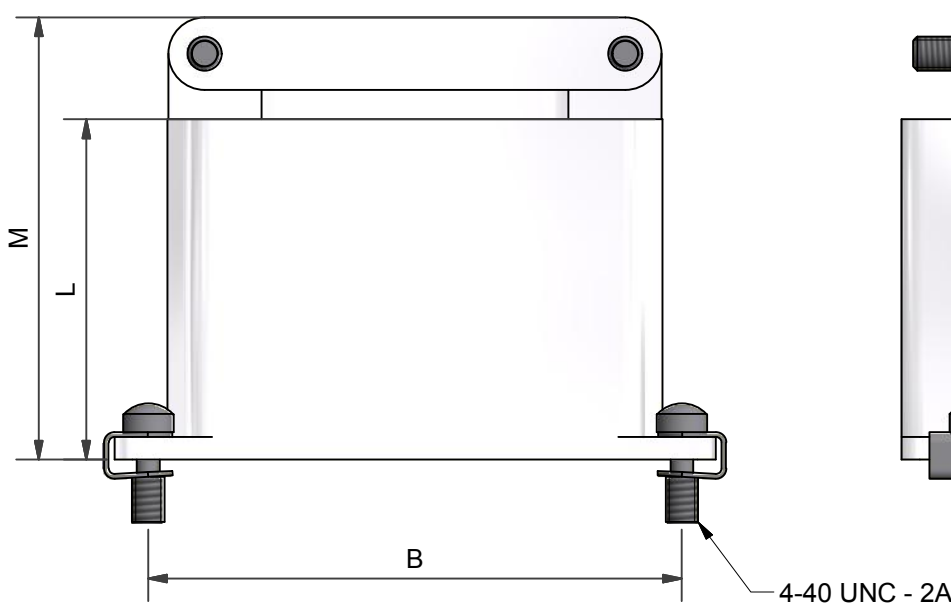
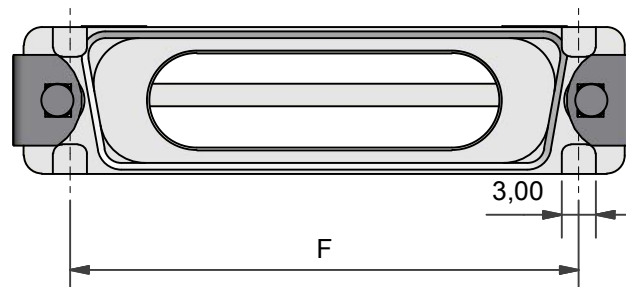


## FLOATING SCREW INSTALLATION GUIDE

FOR FLOATING SCREW ENSURE  
THREAD FEATURE ON CLIP IS ON  
TOP SIDE OF FLANGE



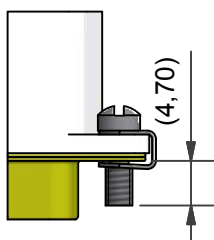
## T OPTION PROVIDES CUTOUTS IN ORDER TO ACCOMMODATE TABS



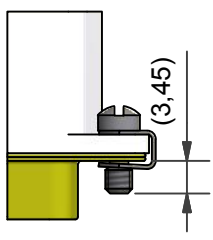
LASER PART MARK AND  
BATCH NUMBER HERE

## HARDWARE OPTIONS

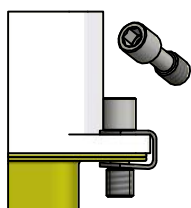
CODE: (NO CODE)  
STANDARD  
SLOTTED  
HEAD SCREW



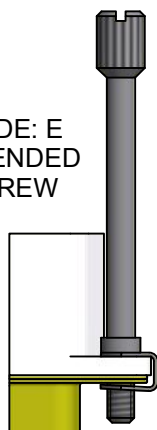
CODE: SSL  
SHORT  
SLOTTED  
HEAD SCREW



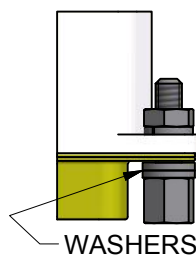
CODE: H  
HEX SOCKET  
HEAD SCREW



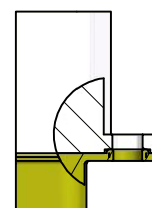
CODE: E  
EXTENDED  
SCREW



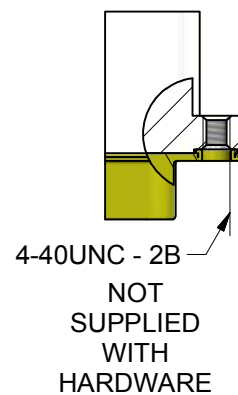
CODE: F  
JACK POST  
(4-40 UNC)



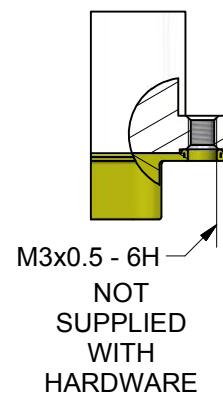
CODE: 0  
NO HARDWARE  
SUPPLIED



CODE: PF-0  
THREADED  
HOLE  
4-40 UNC



CODE: M3-0  
THREADED  
HOLE  
M3



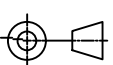


DRAWN		DATE		 3RD ANGLE PROJECTION NOT TO SCALE	PART NUMBER:					 <b>Polamco</b>  <b>TE</b> connectivity	
N.HAWKINS		19/02/2018			D**-1-96-*-**-* SERIES						
DESIGN APPROVAL		DATE			TITLE:						
K.SHEPPARD		20/03/2018			STRAIN RELIEF BACKSHELL						
DOC TYPE		Customer Drawing			UNLESS OTHERWISE SPECIFIED ALL DIMENSIONS IN MILLIMETRES GENERAL TOL LINEAR +/-0,25MM ANGULAR +/- 1°	ASSY USED ON: MIL-DTL-24308					SHT 1
ISSUE 5		REV.	DCR 6701			THIS DRAWING IS COPYRIGHT AND THE PROPERTY OF POLAMCO LTD IT MUST NOT BE COPIED, USED FOR MANUFACTURE OR OTHERWISE DISCLOSED WITHOUT PRIOR WRITTEN CONSENT OF THE COMPANY.					
NCAGE CODE U5792		WEIGHT N/A		POLAMCO LTD, WESTON LOCK, LOWER BRISTOL ROAD BATH BA2 1EP							
					DRAWING NO: P15076						

TABLE 1

SHELL SIZE	A	B	C	D	E	F	L	M
09	31,19	25,00	12,93	8,8	8,3	22,86	20,0	29,0
15	39,52	33,33	12,93	17,1	8,3	31,09	30,0	39,0
25	53,42	47,02	12,93	30,8	8,3	44,86	30,0	39,0
37	69,76	63,50	12,93	46,0	8,3	61,32	30,0	39,0
50	67,31	61,12	15,75	44,3	10,7	58,98	30,0	39,0
104	67,90	63,50	17,35	46,0	12,6	NA	30,0	39,0

TABLE 2

CODE	FINISH
C	ELECTROLESS NICKEL
B	CADMIUM OLIVE DRAB OVER ELECTROLESS NICKEL
ZN	ZINC NICKEL BLACK PASSIVATE OVER ELECTROLESS NICKEL
CHP	ELECTROLESS NICKEL, HIGH PHOSPHOR
Y	YELLOW CHROMATE OVER CADMIUM
GOLD	GOLD OVER ELECTROLESS NICKEL

SEE SS0076 FOR FULL RANGE OF FINISH OPTIONS

D25-1-96-1-C-T-H

SERIES

SHELL SIZE (TABLE 1)

ANGLE (TOP ENTRY)

TERMINATION STYLE (96 SERIES)

MATERIAL (ALUMINIUM ALLOY)

FINISH (TABLE 2)

T OPTION (NOT AVAILABLE ON #104)

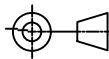


OMIT FOR STANDARD FLANGE

HARDWARE OPTION

(H - SOCKET HEAD SCREWS)

(0 - NO HARDWARE)

LEAVE BLANK FOR SLOTTED HEAD SCREWS

DRAWN		DATE		 <div>3RD ANGLE PROJECTION NOT TO SCALE</div>	PART NUMBER: <div>D**-1-96-*-*-* SERIES</div>					 <div>Polamco</div> 
N.HAWKINS		19/02/2018								
DESIGN APPROVAL		DATE			TITLE: <div>STRAIN RELIEF BACKSHELL</div>					
K.SHEPPARD		20/03/2018								
DOC TYPE	Customer Drawing			UNLESS OTHERWISE SPECIFIED ALL DIMENSIONS IN MILLIMETRES GENERAL TOL LINEAR +/-0,25MM ANGULAR +/- 1°	ASSY USED ON: MIL-DTL-24308					
ISSUE	REV.	DCR			THIS DRAWING IS COPYRIGHT AND THE PROPERTY OF POLAMCO LTD IT MUST NOT BE COPIED, USED FOR MANUFACTURE OR OTHERWISE DISCLOSED WITHOUT PRIOR WRITTEN CONSENT OF THE COMPANY.					
5		6701			POLAMCO LTD, WESTON LOCK, LOWER BRISTOL ROAD BATH BA2 1EP					
NCAGE CODE U5792		WEIGHT N/A		MATERIAL SEE PART NUMBER BREAKDOWN	SHT				DRAWING NO: P15076	
				FINISH SEE PART NUMBER BREAKDOWN	2					