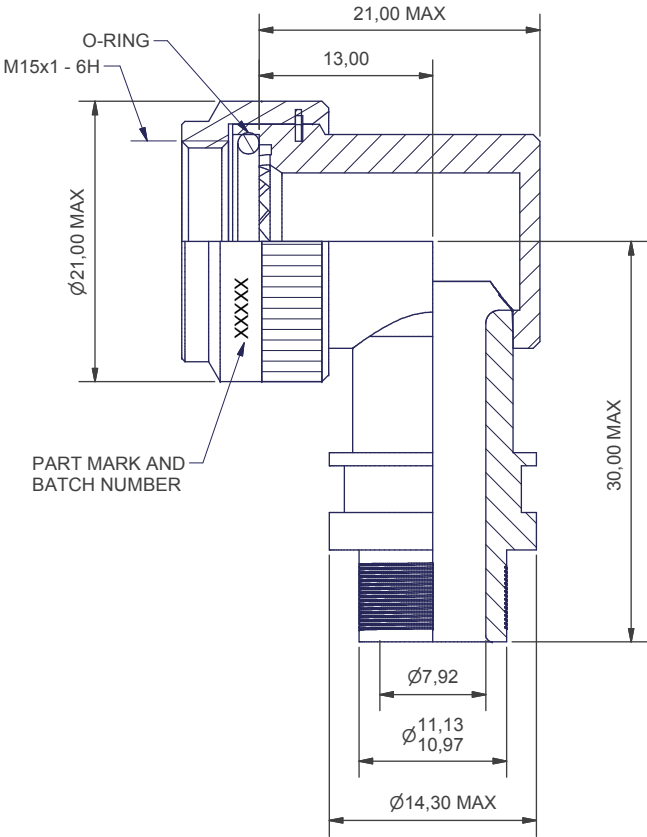
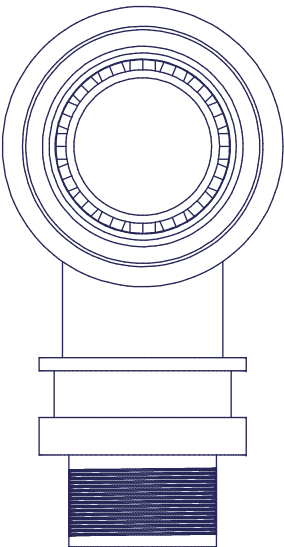
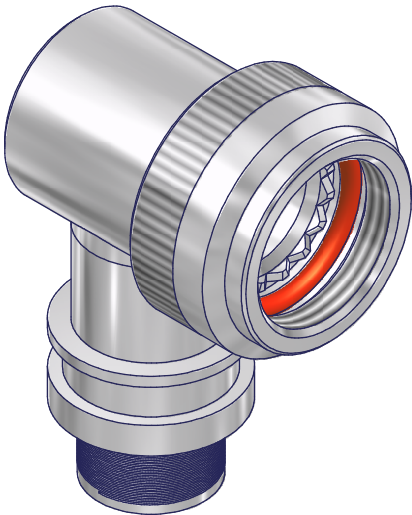




3RD ANGLE PROJECTION



REMOVE ALL SHARP EDGES AND BURRS



THE INFORMATION CONTAINED IN THIS DRAWING  
MAY BE SUBJECT TO EXPORT LICENCE CONTROL

CUSTOMER APPROVAL			
COMPANY	NAME	SIGNATURE	DATE

ORDERS CANNOT BE PLACED AGAINST ALPHA ISSUE DRAWINGS.  
ON RECEIPT OF CUSTOMER APPROVAL, THE DRAWING STATUS WILL RAISE TO ISSUE 1.

100P2826-11-05-1-B-A

SERIES \_\_\_\_\_  
SHELL SIZE \_\_\_\_\_  
ENTRY SIZE \_\_\_\_\_  
MATERIAL (1 - ALUM ALLOY) \_\_\_\_\_  
PLATING (B - CADMIUM OLIVE DRAB OVER ELECTROLESS NICKEL) \_\_\_\_\_  
LOCK RING OPTION \_\_\_\_\_  
(A - SINGLE BRAID; B - DOUBLE BRAID)

ISSUE	DCR NO.	DATE	APPROVED	MATERIAL	UNLESS OTHERWISE SPECIFIED ALL DIMENSIONS IN MILLIMETRES TOLERANCE ON DIMENSIONS +/-0.1MM TOLERANCE ON ANGLES +/- 1 DEGREE	DO NOT SCALE THIS DRAWING	POLAMCO LTD WESTON LOCK LOWER BRISTOL ROAD BATH BA2 1EP	PART NO 100P2826-11-05-1-B-A
1	2908	08/09/2008	ADP	SEE ABOVE	WEIGHT DRAWN DIW	THIS DRAWING IS COPYRIGHT, AND THE PROPERTY OF POLAMCO LTD. IT MUST NOT BE COPIED, USED FOR MANUFACTURE OR OTHERWISE DISCLOSED WITHOUT PRIOR WRITTEN CONSENT OF THE COMPANY.	TITLE  90° LOW PROFILE LOCK RING ADAPTOR ASSEMBLY	ASSY USED ON MIL-DTL-38999 SERIES III
								DRAWING NO P11727