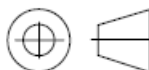


DRAWING NO.

P0741

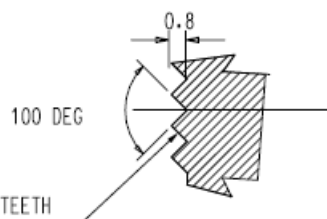
3RD ANGLE PROJECTION



REMOVE ALL SHARP EDGES AND BURRS



VIEW "Y"



100 DEG

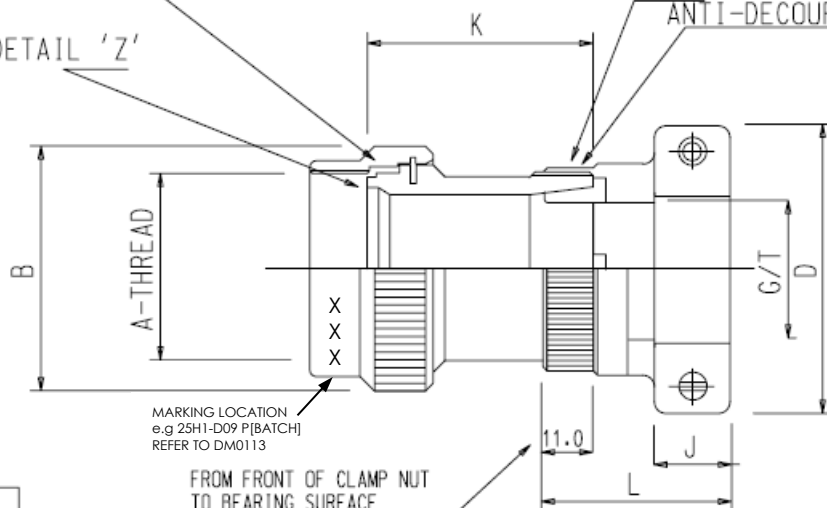
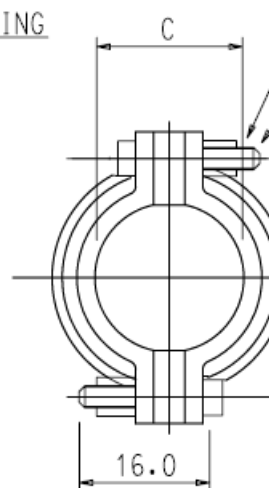
NO.OF TEETH

ANTI-DECOUPLING

DETAIL 'Z'

R-THREAD

ANTI-DECOUPLING

CLINCH NUT, CAPTIVE  
SILVER PLATED, SELF LOCKINGSCREW WITH WRENCHING RECESS  
TO NAS 7100MARKING LOCATION  
e.g 25H1-D09 P[BATCH]  
REFER TO DM0113FROM FRONT OF CLAMP NUT  
TO BEARING SURFACE

DETAIL Z

SCREW AND NUT SIZE  
08-12 0.138-32UNC  
14-28 0.164-32UNC

SHELL SIZE	B MAX	K +0/-2.0	A-THREAD CLASS 6H	R-THREAD CLASS 2A
09	18.0	25.40	M12 * 1.0	5/8 -24UNEF
11	21.0	25.40	M15 * 1.0	7/8 -20UNEF
13	25.0	25.40	M18 * 1.0	1 -20UNEF
15	28.0	25.40	M22 * 1.0	1 1/16 -18UNEF
17	31.0	31.75	M25 * 1.0	1 3/16 -18UNEF
19	34.0	31.75	M28 * 1.0	1 5/16 -18UNEF
21	37.0	31.75	M31 * 1.0	1 7/16 -18UNEF
23	40.0	38.10	M34 * 1.0	1 9/16 -18UNEF
25	43.5	38.10	M37 * 1.0	1 3/4 -18UNS

SHELL SIZE	E +0/-0.1	F +/-0.13	G +/-0.7	T +/-0.7	NO.OF TEETH	C +/-0.76	D MAX	J +/-0.4	L MAX
09	10.5	6.9	10.06	10.06	12	11.12	27.2	8.69	23.62
11	13.5	10.3	11.99	11.99	16	14.28	30.8	8.69	25.15
13	16.5	13.1	15.72	15.72	20	15.88	32.6	8.69	27.94
15	20.5	16.3	18.11	18.11	24	19.05	36.0	11.86	27.94
17	23.5	19.5	21.44	21.44	28	23.83	43.1	11.86	27.94
19	26.5	22.0	23.37	23.37	32	23.83	43.1	11.86	27.94
21	29.5	25.1	26.42	26.42	36	31.75	51.3	11.86	29.11
23	32.5	28.3	29.90	29.90	40	31.75	51.3	11.86	29.11
25	35.5	31.6	33.35	33.35	44	34.93	54.6	11.86	30.76

PART NO.SYSTEM

25H1-E-25

SPEC NO.

MATERIAL/FINISH

SHELL SIZE

2	CRN 26424	11.06.24	R.S
1	FIRST ISSUE	22.3.94	
ISSUE	DESCRIPTION	DATE	APPROVED

DRAWN	A.D.P.	22.3.94	MATERIAL/FINISH	UNLESS OTHERWISE SPECIFIED:-	DO NOT SCALE THIS DRAWING	POLAMCO LTD.	WESTON LOCK LOWER BRISTOL ROAD BATH	PART NO.	25H1-**-**
CHECKED			D-STAINLESS STEEL	ALL DIMENSIONS IN MILLIMETRES	THIS DRAWING IS COPYRIGHT AND THE PROPERTY OF POLAMCO LTD. IT MUST NOT BE COPIED, USED FOR MANUFACTURE OR OTHERWISE DISCLOSED WITHOUT PRIOR WRITTEN CONSENT OF THE COMPANY.	TITLE	ANTI-DECOUPLING STRAIGHT ADAPTOR ASSEMBLY RFI/EMI CONE GROUNDING	ASSY USED ON	
APPROVED 1			PASSIVATED	TOLERANCE ON DIMENSIONS +/-0.1				DRAWING NO.	P0741
APPROVED 2			E-COUPLING NUT-ST STEEL	TOLERANCE ON ANGLES +/-1 DEG					
APPROVED 3			PASSIVATED	WEIGHT					
PROJECT			BODY-ALUMINIUM	SCALE	N.T.S.				
PART NO.	25H1-**-**		ELECTROLESS NICKEL						