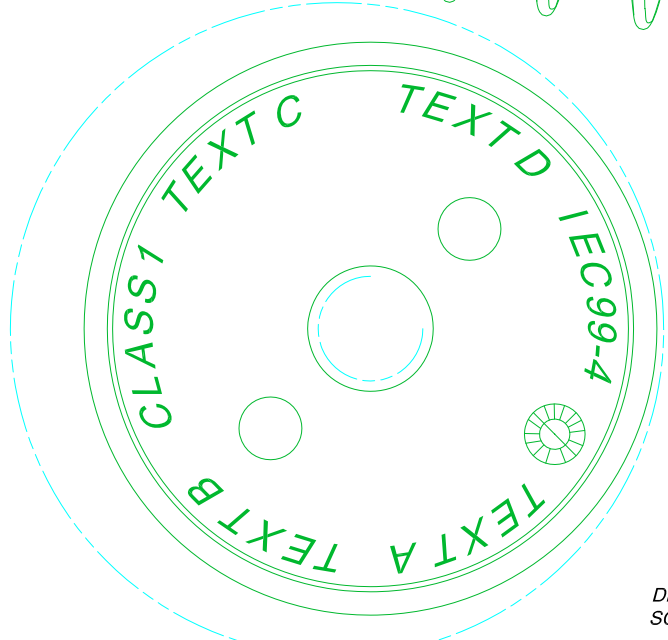
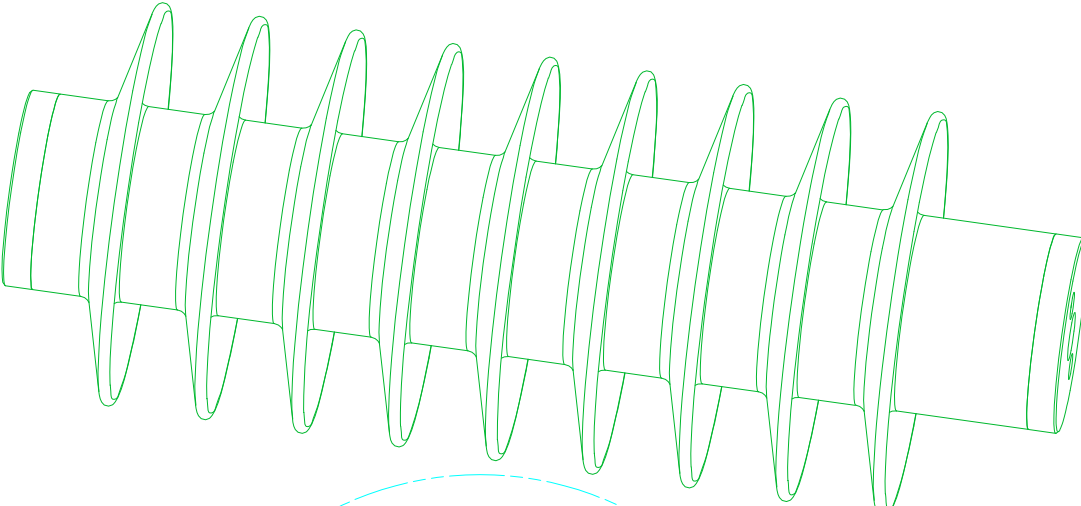
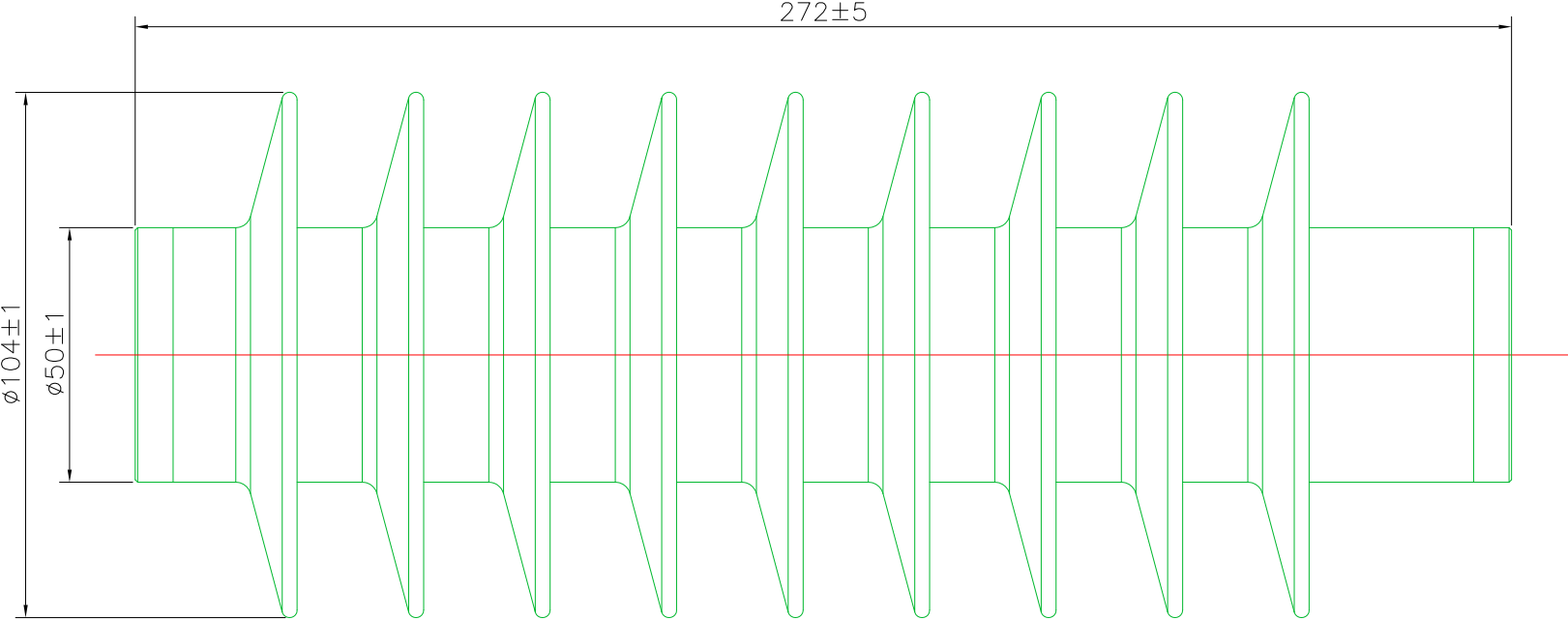
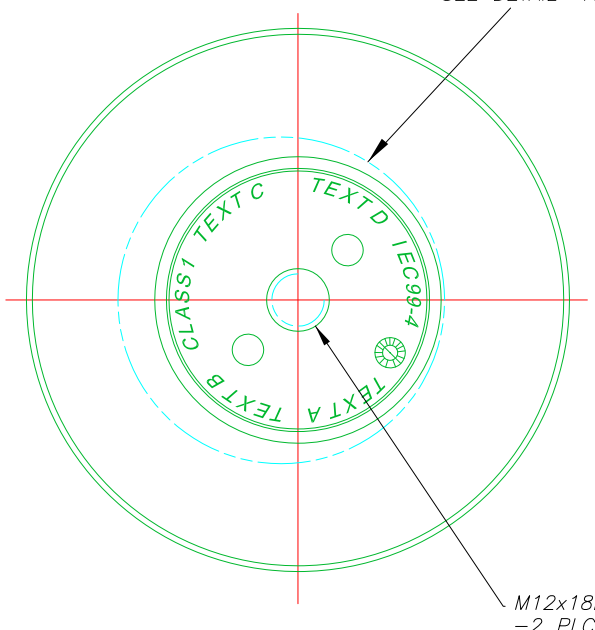


THIS DRAWING IS UNPUBLISHED. RELEASED FOR PUBLICATION
 © COPYRIGHT - TE CONNECTIVITY IRELAND LTD, ISC, BLOCK 1, UNIVERSITY OF LIMERICK (NTP), CASTLETROY, LIMERICK, IRELAND

LOC		DIST		REVISIONS			
P	LTR	DESCRIPTION	DATE	DWN	APVD		
A		ORIGINAL ISSUE	12/15	JM	-		



DETAIL A
SCALE 2:1

No SHEDS	CREEPAGE LENGTH	FLASHOVER DISTANCE
9	702	277

NOTE	
HOUSING PRINT	STE
	Bowthorpe EMP Surge Arrester
	Is 21kA / In 10kA
50/60 Hz	
STD STUD LENGTH 47±2mm. OTHER LENGTHS AVAILABLE DEPENDING ON ACCESSORY SELECTION	

REFER TO TECHNICAL DATASHEETS FOR ALL OTHER PRODUCT DETAILS

PRODUCT	TEXT A	TEXT B	TEXT C	TEXT D
DA1-18E	DA1-18E	LOT No	Uc 14.4kV	Ur 18kV
DA1-21E	DA1-21E	LOT No	Uc 16.8kV	Ur 21kV
DA1-22E	DA1-22E	LOT No	Uc 17.6kV	Ur 22kV
DA1-24E	DA1-24E	LOT No	Uc 19.2kV	Ur 24kV
DA1-27E	DA1-27E	LOT No	Uc 21.6kV	Ur 27kV
DA1-30E	DA1-30E	LOT No	Uc 24kV	Ur 30kV

THIS DRAWING IS A CONTROLLED DOCUMENT.		DWN J MULLIGAN 23/12/2015	STE TE Connectivity
DIMENSIONS: mm		CHK R ULBRYCH	
TOLERANCES UNLESS OTHERWISE SPECIFIED:		APVD P FitzGERALD	NAME
0 PLC ± 1		PRODUCT SPEC	MV SURGE ARRESTER
1 PLC ± 0.1		APPLICATION SPEC	DA1-xxE RANGE
2 PLC ± 0.01		SEE DATASHEET	DA1-xxE
3 PLC ± 0.001		WEIGHT	RESTRICTED TO
4 PLC ± 0.0001		SCALE 1:1	SIZE A2
ANGLES ± 1		SHEET 1 of 1	DRAWING NO C=MV-DA1-00432-C
FINISH		REV A	CUSTOMER DRAWING
MATERIAL ALL FITTINGS M12, A2 SS			