

REVOLUTIONS		DATE	DMN	AP'D
P	LTR	DESCRIPTION		
A		INITIAL DRAWING	07AUG2020	JR

**K600C(35KV)**

- Product facts**
- \* 35 kv rating operated in oil or potting
- \* Smallest 35 KV rated relay available

\*Customer must isolate high voltage terminals using suitable dielectric such as oil or potting

RELAY PART NUMBER	K600C731	K600C831	K600C931
Volts, Nominal DC	12 V	26.5 V	115 V
Pickup, Max.	9 Vdc	18 Vdc	90 Vdc
Dropout	.5-5 Vdc	1-10 Vdc	5-50 Vdc
Coil Resistance (±10%)	30 Ω	125 Ω	2000 Ω

Ratings listed are for 25°C, sea level conditions

**Coil Data**

**Product Specifications**

- Contact Arrangement — SPDT
- Contact Form — C
- Test Voltage, DC or 60 Hz (Peak) — 37 kV\*\*
- Rated Operating Voltage (Peak) — DC or 60 Hz — 35 kV\*\*
- Continuous Carry Current, Max. — DC or 60 Hz — 10 A RMS
- Coil Hi-Pot (Vrms, 60 Hz) — 500 A RMS
- Contact Resistance, Max. — N/A
- Operate Time, Max. — 15 ms
- Release Time, Max. — 15 ms

**Shock, 11ms, 1/2 Sine (Peak)** — 20 g

**Vibration** — Peak — 10 g (55 to 500 Hz)

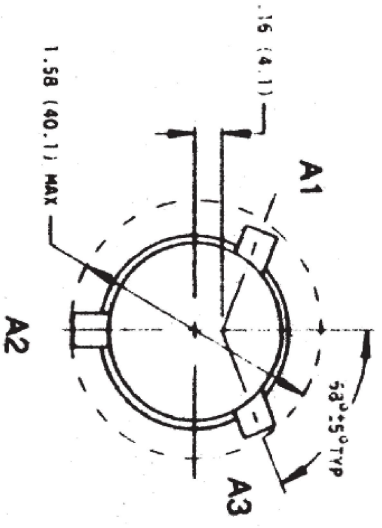
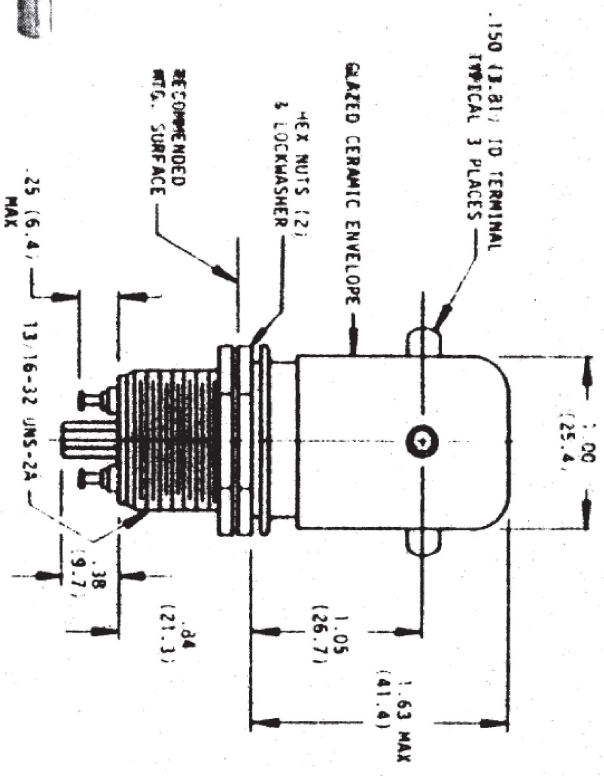
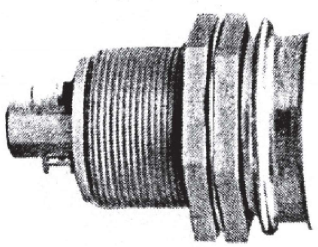
**Operating Ambient Temperature Range** — -55°C to +85°C

**Mechanical Life** — 1 million cycles

**Weight, Nominal** — 93.6 g (3.3 oz.)

**Note:**

\*\*37 kV test voltage, 35 kV operate voltage when operated in oil.



THIS DRAWING IS A CONTROLLED DOCUMENT.

DIMENSIONS:		TOLERANCES UNLESS OTHERWISE SPECIFIED:		APPLICATION SPEC		CAGE CODE DRAWING NO		RESTRICTED TO	
INCHES									
		0 P.C.	±	PRODUCT SPEC		SIZE	A3	MAKE ONLY LOAD SWITCHING	
		1 P.C.	±	APPLICATION SPEC		CAGE CODE	ⓈK600-SERIES	RESTRICTED TO	
		2 P.C.	±	WEIGHT		DRAWING NO			
		3 P.C.	±	CUSTOMER DRAWING		SCALE	NTS		
		4 P.C.	±			SHEET	1 OF 1		
		ANGLES	±			REV	A		



TE Connectivity

K600-SERIES

MAKE ONLY LOAD SWITCHING

ALL DIMENSIONS ARE IN INCHES(mm)