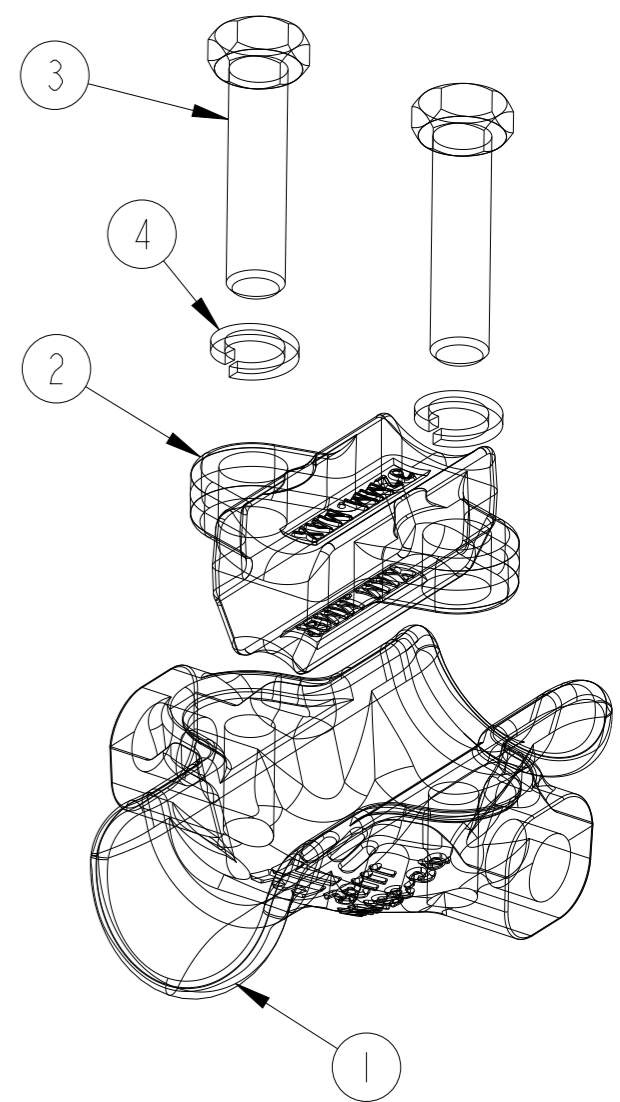
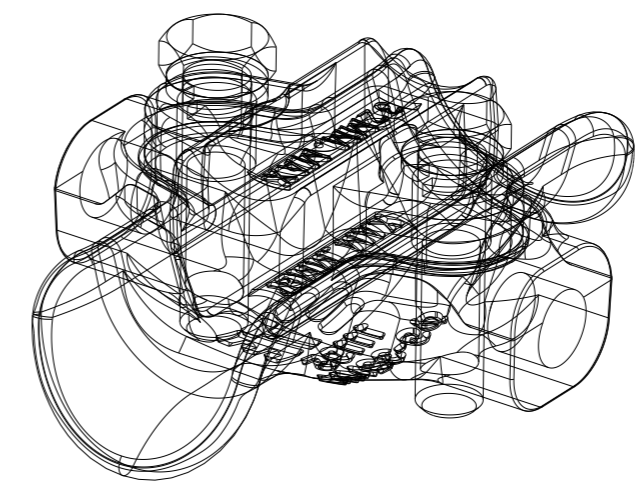
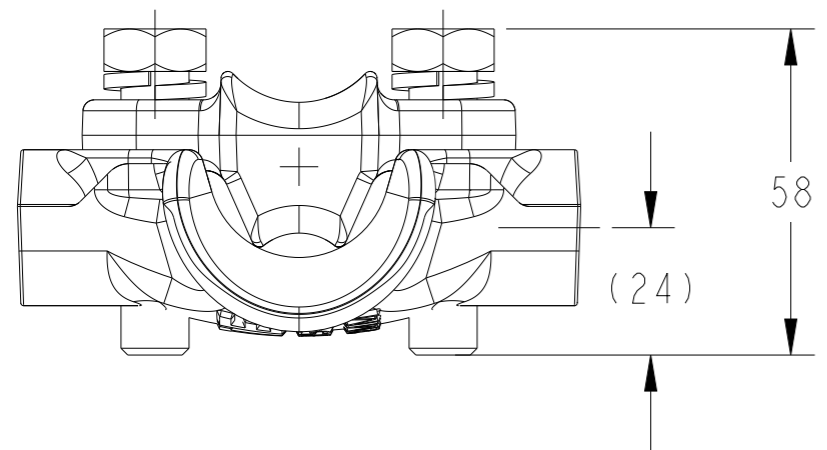
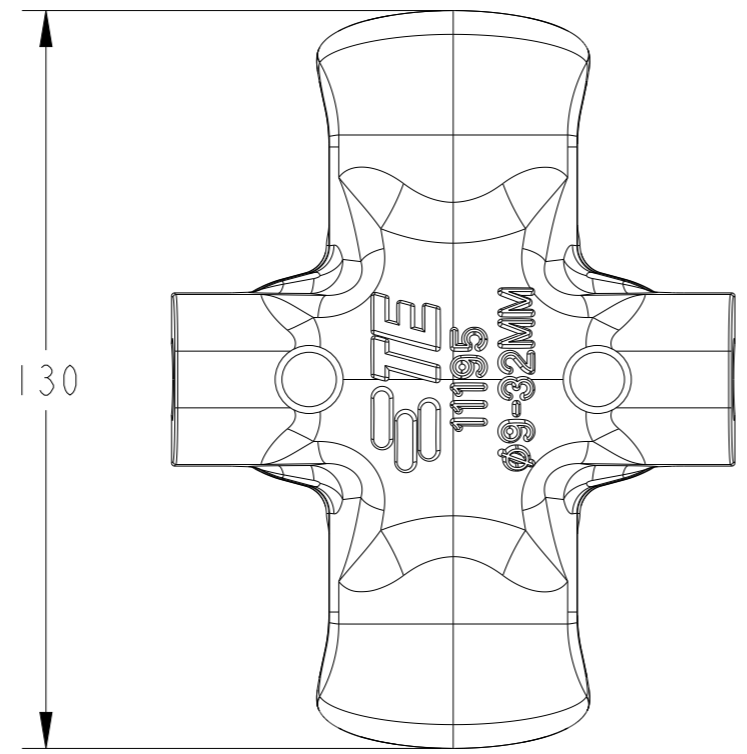
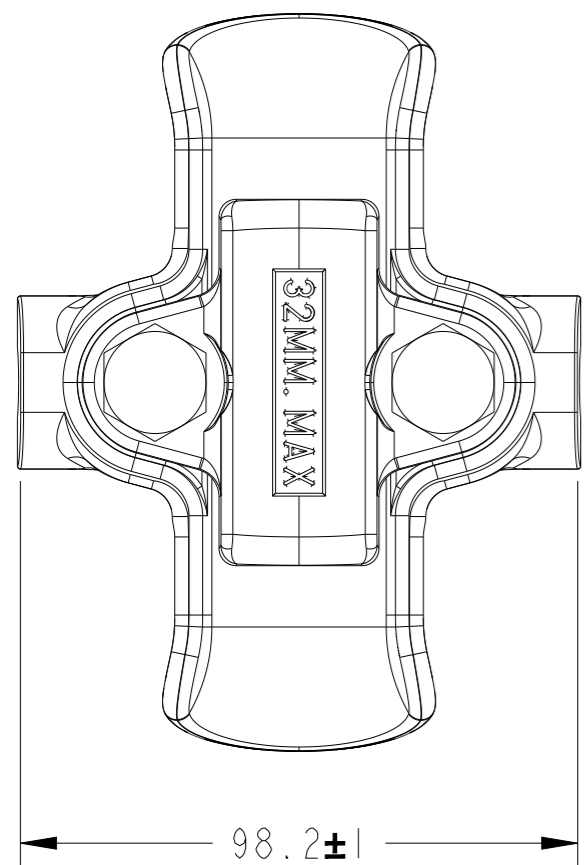


P	LTR	DESCRIPTION	DATE	DWN	APVD
	A	INITIAL RELEASE	17AUG2022	AS	KP



NOTE:
 RECOMMENDED ASSEMBLY TORQUE 35Nm MAXIMUM TORQUE 45Nm
 CABLE RANGE: $\varnothing 7 - \varnothing 32$
 CLAMP RANGE (SOLID \varnothing): $\varnothing 5 - \varnothing 32$

ITEM	DESCRIPTION	QTY
1	CONDUCTOR CLAMP BODY ALUMINIUM	1
2	CONDUCTOR CLAMP SADDLE ALUMINIUM	1
3	M12 x 50 HEX. SCREW STEEL GALV. ASI11	2
4	12 SPRING WASHER STEEL GALV. ASI96	2

ALL DIMS IN MM
 UNLESS OTHERWISE SPECIFIED

THIS DRAWING IS A CONTROLLED DOCUMENT.

DIMENSIONS: mm	TOLERANCES UNLESS OTHERWISE SPECIFIED:
	0 PLC ±
	1 PLC ±
	2 PLC ±
	3 PLC ±
	4 PLC ±
	ANGLES ±
MATERIAL	FINISH

DWN A. SABARAD 17AUG2022	NAME CONDUCTOR CLAMP ASSEMBLY
CHK K. PUSTHAY 17AUG2022	
APVD K. PUSTHAY 17AUG2022	
PRODUCT SPEC	
APPLICATION SPEC	RESTRICTED TO
WEIGHT	
CUSTOMER DRAWING	

906184-000
 PART NO.

STE TE Connectivity

SIZE A3	CAGE CODE 00779	DRAWING NO G-INS2050	REVISION REV A
------------	--------------------	-------------------------	-------------------

SCALE NTS SHEET 1 OF 1