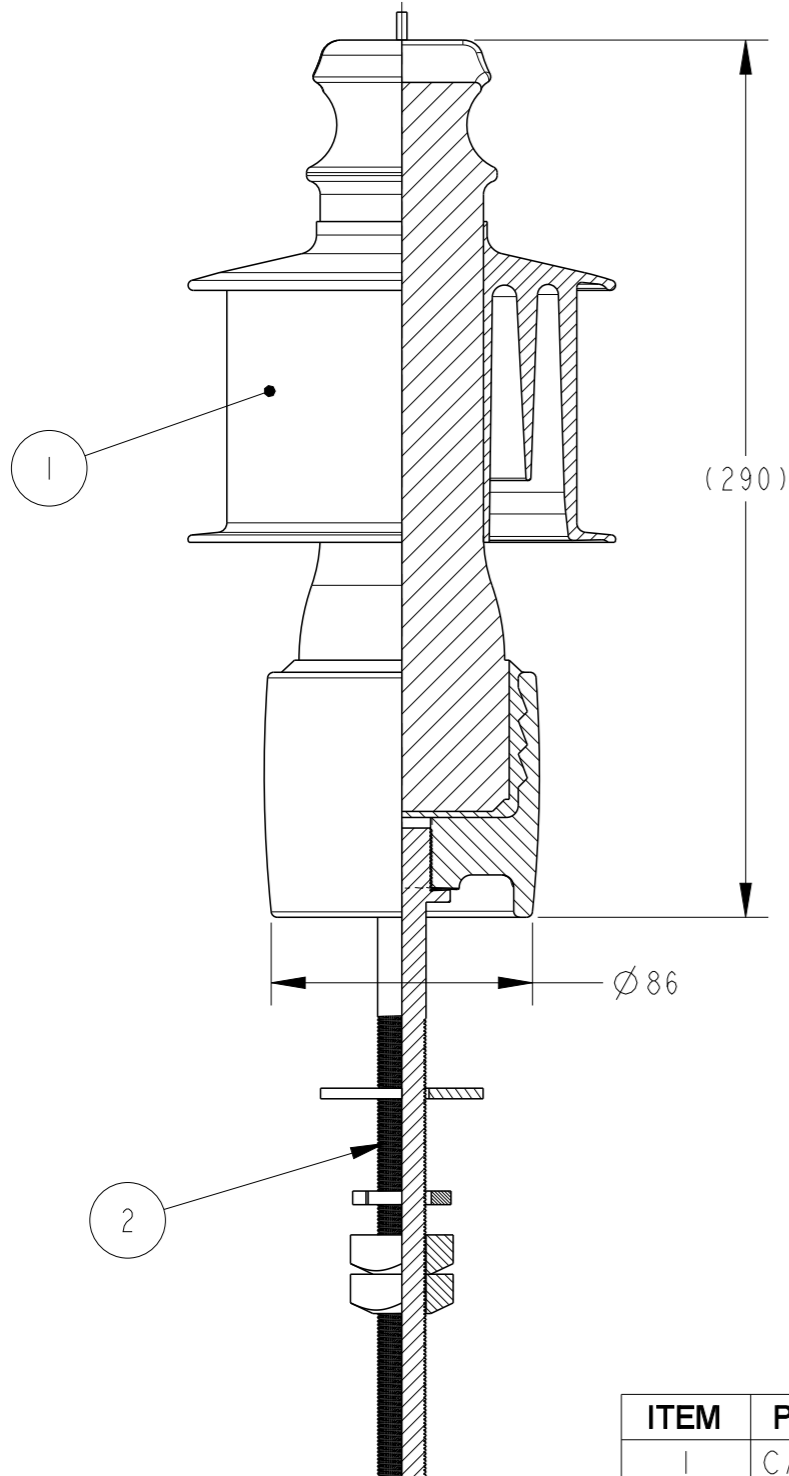


REVISIONS

P	LTR	DESCRIPTION	DATE	DWN	APVD
	A	INITIAL RELEASE	08APR2021	MR	KP



NOTES:

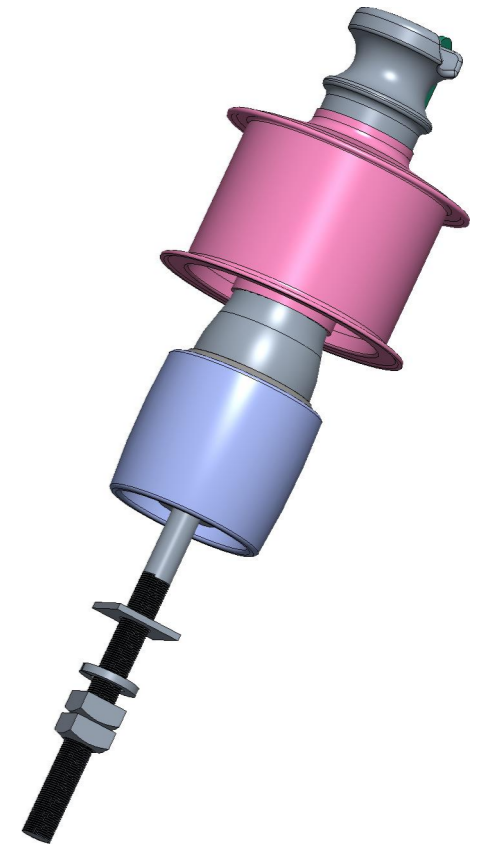
ELECTRICAL PROPERTIES	UNITS	ANSI	IEC
Rated Voltage	U	kV	15
Nominal Voltage	Vn	kV	
Impulse Withstand	BIL	kVp	125
Impulse Flashover		kVp	145
P.F. Flashover-Dry		kV	92
P.F. Flashover-Wet		kV	72
P.F. Withstand-Wet		kV	55
Radio Interference		kV	15
at 1000kHz	micro V		10

PHYSICAL PROPERTIES	UNITS	ANSI	IEC
Nominal Creepage (A-B)	mm	540	540
Nominal Protected Creepage	mm	305	305
Nominal Dry Arcing Distance	mm	210	
Net Weight	kg	3.5	3.5

MECHANICAL PROPERTIES	UNITS	ANSI	IEC
Cantilever Strength	kN	12.5	12.5

MATERIALS
 Core Porcelain Gray
 Sheds Silicone Rubber Gray
 End Fittings Galvanized Cast Iron

Ref. Standards: ANSI C29.7 & IEC 60383



ITEM	PART NUMBER	DESCRIPTION	QTY
1	CA2655-000	DUL-5472AX	1
2	1599946-1	HSI-M20-M16-ADPT-PN-190	1

PART NO.
1599906-2

THIS DRAWING IS A CONTROLLED DOCUMENT.		DWN M. RAJ 08APR2021												
DIMENSIONS: mm		CHK K. PUSTHAY 08APR2021												
TOLERANCES UNLESS OTHERWISE SPECIFIED:		APVD K. PUSTHAY 08APR2021												
<table border="1"> <tr><td>0 PLC</td><td>±</td></tr> <tr><td>1 PLC</td><td>±</td></tr> <tr><td>2 PLC</td><td>±</td></tr> <tr><td>3 PLC</td><td>±</td></tr> <tr><td>4 PLC</td><td>±</td></tr> <tr><td>ANGLES</td><td>±</td></tr> </table>		0 PLC			±	1 PLC	±	2 PLC	±	3 PLC	±	4 PLC	±	ANGLES
0 PLC	±													
1 PLC	±													
2 PLC	±													
3 PLC	±													
4 PLC	±													
ANGLES	±													
MATERIAL N/A	FINISH N/A	APPLICATION SPEC	NAME HSI-RAYBOWL-DBELL-15KV-METRIC											
		WEIGHT	SIZE A3	CAGE CODE 00779										
		CUSTOMER DRAWING	DRAWING NO G-INS1895	RESTRICTED TO -										
		SCALE NTS	SHEET 1	OF 1										
			REV A											