

4

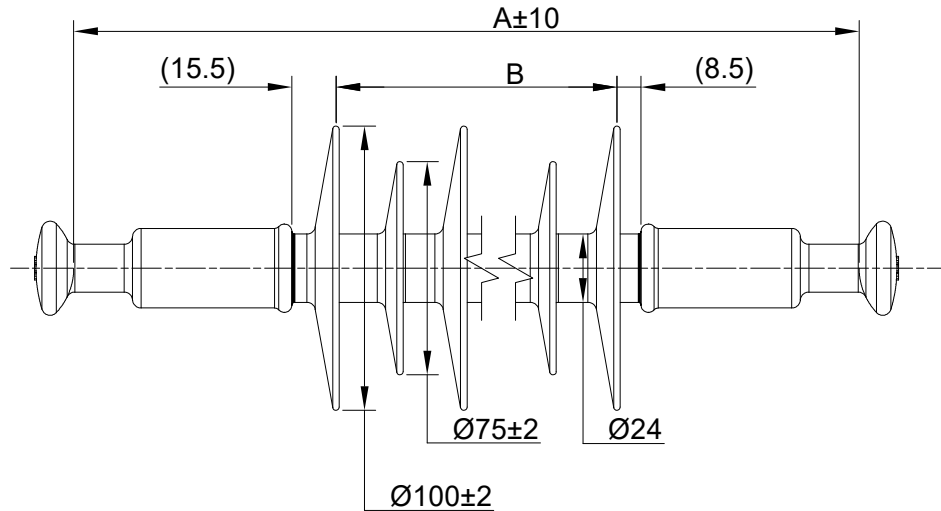
3

2

1

THIS DRAWING IS UNPUBLISHED. RELEASED FOR PUBLICATION
 © COPYRIGHT - TE Connectivity Ltd. ALL RIGHTS RESERVED.

REVISIONS				
P	LTR	DESCRIPTION	DATE	APVD
B		PRELIMINARY NOTE ADDED PER ECO-20-010436	08/20	AS KP



MATERIALS:

- 1. CORE : ECR FIBERGLASS REINFORCED POLYMER
- 2. HOUSING : SILICONE RUBBER
- 3. END FITTINGS : BALL & BALL CONFORM TO IEC 120-16
- 4. TEST STANDARDS : IEC 61109 & IEC 62217

MECHANICAL PROPERTIES:

- 1. SPECIFIED MECHANICAL LOAD (SML) : 70 kN
- 2. ROUTINE TENSILE LOAD (RTL) : 35 kN

PRODUCT MARKINGS:

- 1. TE LOGO
- 2. SML 70kN
- 3. YEAR & MONTH
- 4. BATCH NO #

TCPN	DESCRIPTION	NO. OF BIG SHED (#)	NO. OF SMALL SHED (#)	NOMINAL CREEPAGE (mm)	NOMINAL DRY ARCING (mm)	DRY AC WITHSTAND (kV)	WET AC WITHSTAND (kV)	DRY AC FLASHOVER (kV)	WET AC FLASHOVER (kV)	LIGHTNING IMPULSE WITHSTAND (kV)	LIGHTNING IMPULSE FLASHOVER (kV)	A (mm)	B (mm)	APPROX. WEIGHT (Kg)
EP1083-000	CS-70-BB-120-0415-M-11	3	2	415	165	80	65	85	80	120	130	267	90	0.86
EP1084-000	CS-70-BB-145-0580-M-11	4	3	580	210	95	80	100	95	145	155	312	135	0.94
EP1085-000	CS-70-BB-170-0740-M-11	5	4	740	255	110	95	115	105	170	180	357	180	1.02
EP1086-000	CS-70-BB-195-0900-M-11	6	5	900	300	125	110	130	120	195	200	402	225	1.10
EP1087-000	CS-70-BB-215-1065-M-11	7	6	1065	345	140	125	145	135	215	225	447	270	1.18
EP1088-000	CS-70-BB-240-1225-M-11	8	7	1225	390	155	140	160	150	240	250	492	315	1.26
EP1089-000	CS-70-BB-265-1390-M-11	9	8	1390	435	170	155	175	165	265	275	537	360	1.34
EP1090-000	CS-70-BB-290-1550-M-11	10	9	1550	480	185	170	190	175	290	300	582	405	1.42
EP1091-000	CS-70-BB-310-1710-M-11	11	10	1710	525	200	185	205	190	310	325	627	450	1.50
EP1092-000	CS-70-BB-335-1875-M-11	12	11	1875	570	215	195	220	205	335	350	672	495	1.58
EP1093-000	CS-70-BB-360-2035-M-11	13	12	2035	615	230	210	235	220	360	375	717	540	1.66
EP1094-000	CS-70-BB-380-2200-M-11	14	13	2200	660	245	225	250	235	380	400	762	585	1.74
EP1095-000	CS-70-BB-405-2360-M-11	15	14	2360	705	260	240	265	250	405	425	807	630	1.82
EP1096-000	CS-70-BB-430-2520-M-11	16	15	2520	750	275	255	280	260	430	450	852	675	1.90
EP1097-000	CS-70-BB-455-2685-M-11	17	16	2685	795	290	270	295	275	455	475	897	720	1.98
EP1098-000	CS-70-BB-475-2845-M-11	18	17	2845	840	305	285	310	290	475	500	942	765	2.06
EP1099-000	CS-70-BB-500-3010-M-11	19	18	3010	885	320	300	325	305	500	525	987	810	2.14

NOTES:

UNSPECIFIED TOLERANCE

- 1) ±(0.04 x d + 1.5)mm WHEN d < 300mm
 - 2) ±(0.025 x d + 6)mm WHEN d > 300mm
- WITH MAX. TOLERANCE OF ±50mm

THIS DRAWING IS A CONTROLLED DOCUMENT.

DIMENSIONS: mm



TOLERANCES UNLESS OTHERWISE SPECIFIED:

- 0 PLC ±
- 1 PLC ±
- 2 PLC ±
- 3 PLC ±
- 4 PLC ±
- ANGLES ±

MATERIAL

FINISH

DWN 10-10-2019

CHK GHANSHYAM 08-08-2020

A. SABARAD

APVD K. PUSTHAY 08-08-2020

PRODUCT SPEC

APPLICATION SPEC

WEIGHT

CUSTOMER DRAWING



TE Connectivity

EXTRA HIGH CREEP TENSION DISTRIBUTION INSULATOR-B&B

SIZE	CAGE CODE	DRAWING NO	RESTRICTED TO
A3	00779	C=INS1616	-

SCALE	SHEET	1 of 1	REV
NTS			B