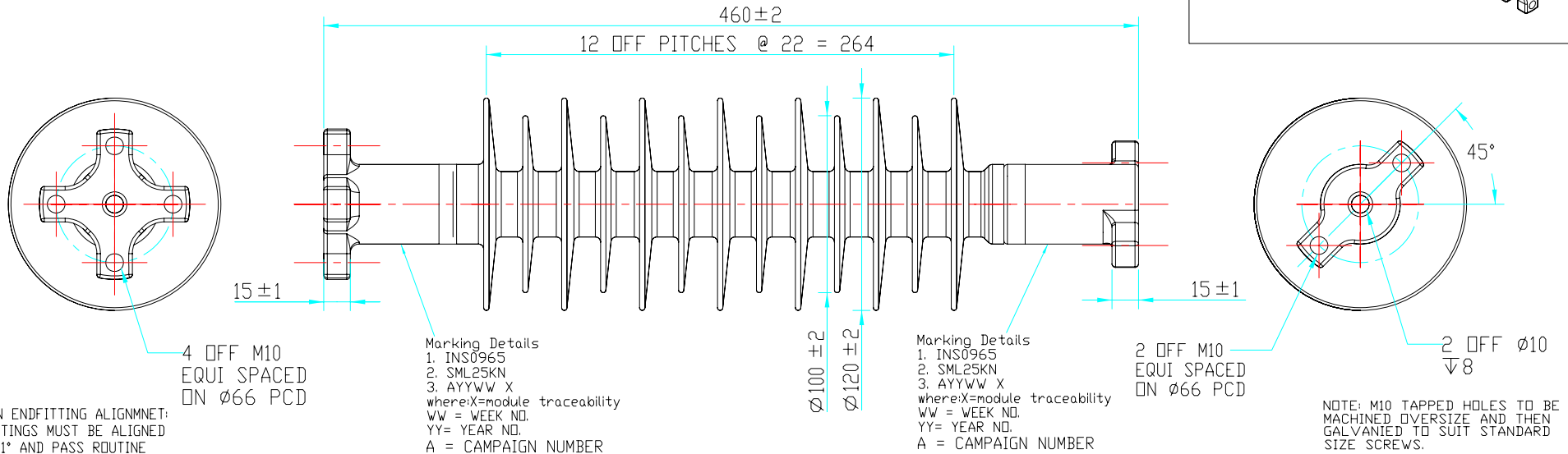
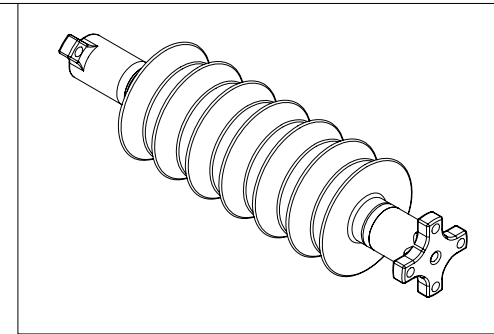


SCD



ELECTRICAL PROPERTIES

DRY AC FLASHOVER	:149 kV
WET AC FLASHOVER	:116 kV
DRY AC WITHSTAND	:125 kV
WET AC WITHSTAND	:109 kV
IMPULSE WITHSTAND VOLTAGE	:225 kV

MECHANICAL PROPERTIES

SCL	:6.0 kN
MDCL	:2.5 kN
RTL	:12.5 kN
SML	:25 kN
SToL	:NONE

PHYSICAL PROPERTIES

NOMINAL CREEPAGE	:1190mm
NOMINAL DRY ARC	:360mm
END FITTING DESIGN:	:CUSTOMER REQUEST

MATERIALS

END FITTING	:CAST IRON GALV.
	:GALVANISE TO ASTM - A153 CLASS A
	:MIN. 80 MICRONS
HOUSING	:RAYCHEM HV RED (EVA)
CORE	:RGBF

REV	DATE	SIGN	MODIFICATION	APP
1	12/08	D.M	ORIGINAL ISSUE	
2	02/10	HMF	PCN CORRECTION	MB
3	02/11	HMF	RTL UPDATED	KP



ENERGY DIVISION



RAYCHEM SHANNON
BAY 100-109
SHANNON IND. EST.
SHANNON
CO. CLARE
IRELAND

THIS DRAWING AND THE INFORMATION SET FORTH HEREIN ARE THE PROPERTY OF TYCO ELECTRONICS AND ARE TO BE HELD IN TRUST AND CONFIDENCE. PUBLICATION, DUPLICATION, DISCLOSURE OR USE FOR ANY OTHER PURPOSE NOT EXPRESSLY AUTHORISED IN WRITING BY TYCO ELECTRONICS IS PROHIBITED.

DRN	D.MITCHELL	12/08
CHECK	K.FINUCANE	12/08
APP	J.TOTEV	12/08
PCN	CM6853-000	

RAP-46R-G66-460-M01