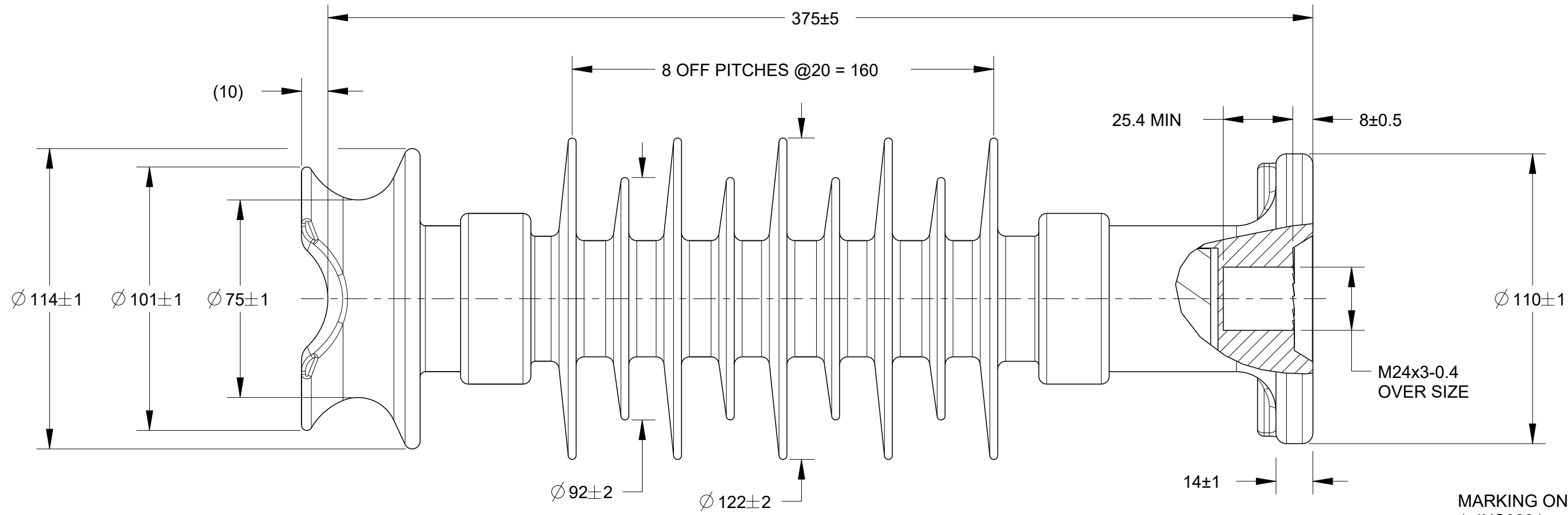


© 2020 TE Connectivity. All Rights Reserved.

REVISIONS					
P	LTR	DESCRIPTION	DATE	DWN	APVD
6		REDRAWN PER ECO-21-004049	05OCT2020	MR	KP



MARKING ON ENDFITTING  
 1. INS0831  
 2. MDCL : 5.5kN  
 3. RYC

**ELECTRICAL PROPERTIES :**

DRY AC FLASHOVER : 150 kV  
 WET AC FLASHOVER : 101 kV  
 DRY AC WITHSTAND : 136 kV  
 WET AC WITHSTAND : 81 kV  
 IMPULSE WITHSTAND VOLTAGE : 194 kV

**MECHANICAL PROPERTIES :**

SCL : 12.5 kN/3.475 kNm  
 MDCL : 5.5 kN/1.529 kNm  
 STL : 25 kN  
 SML : NONE

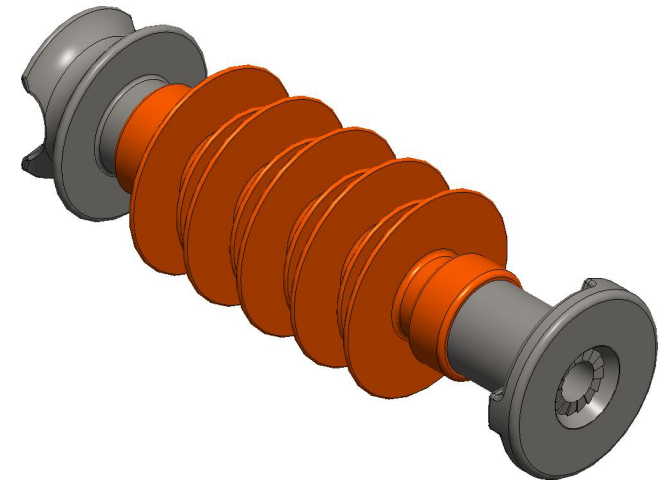
**PHYSICAL PROPERTIES :**

NOMINAL CREEPAGE : 770 MM  
 NOMINAL DRY ARC : 260 MM  
 END FITTING DESIGN : STANDARD ANSI 29.7 & IEC60720 DESIGN

**MATERIAL :**

END FITTING : STEEL GALVANISED  
 HOUSING : RAYCHEM HV RED (EVA)  
 CORE : RBGF

DIFFERENT THREAD TYPES AVAILABLE  
 STANDARD PINS SUPPLIED ON REQUEST



CJ1058-000  
 PART NO.

THIS DRAWING IS A CONTROLLED DOCUMENT.		DWN M.RAJ 05OCT2020												
DIMENSIONS: mm		CHK K.PUSTHAY 05OCT2020												
TOLERANCES UNLESS OTHERWISE SPECIFIED:		APVD K.PUSTHAY 05OCT2020												
<table border="1"> <tr><td>0 PLC</td><td>±</td></tr> <tr><td>1 PLC</td><td>±</td></tr> <tr><td>2 PLC</td><td>±</td></tr> <tr><td>3 PLC</td><td>±</td></tr> <tr><td>4 PLC</td><td>±</td></tr> <tr><td>ANGLES</td><td>±</td></tr> </table>		0 PLC				±	1 PLC	±	2 PLC	±	3 PLC	±	4 PLC	±
0 PLC	±													
1 PLC	±													
2 PLC	±													
3 PLC	±													
4 PLC	±													
ANGLES	±													
MATERIAL SEE NOTES		FINISH N/A	NAME RLP-31R-FG-M24NPG-M											
		APPLICATION SPEC	SIZE A3	CAGE CODE 00779	DRAWING NO C-INS0831									
		WEIGHT	RESTRICTED TO -											
		CUSTOMER DRAWING	SCALE NTS	SHEET 1 OF 1	REV 6									