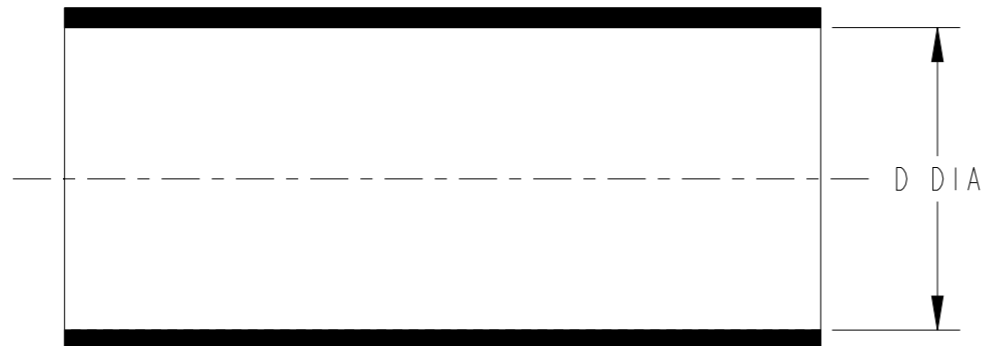


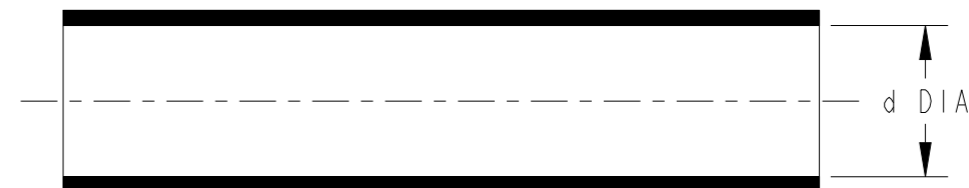
P	LTR	DESCRIPTION	DATE	DWN	APVD
	A	NEW DRAWING	13DEC2023	BDA	VN

# HFT5000 HEAT-SHRINKABLE FABRIC TUBING

a. PART AS SUPPLIED



b. PART FULLY RECOVERED



## PRODUCT DIMENSIONS

PART No.	D DIA MIN a		d DIA MAX b	
	mm	inch	mm	inch
4/2	4.00	0.157	2.00	0.079
6/3	6.00	0.236	3.00	0.118
12/6	12.00	0.472	6.00	0.236
20/10	20.00	0.787	10.00	0.394
25/12	25.00	0.984	12.00	0.472
30/15	30.00	1.181	15.00	0.591
34/17	34.00	1.339	17.00	0.669
40/20	40.00	1.575	20.00	0.787
50/25	50.00	1.969	25.00	0.984
60/30	60.00	2.362	30.00	1.181
70/35	70.00	2.756	35.00	1.378
80/40	80.00	3.150	40.00	1.575
100/50	100.00	3.937	50.00	1.969

## HEAT-SHRINKABLE FABRIC TUBING PRODUCT INFORMATION

WARP MATERIAL: 6/167 DTEX POLYESTER  
WEFT MATERIAL: 0.30 (0.010) NOM. IRRADIATED MODIFIED POLYOLEFIN.  
COATING: MODIFIED POLYOLEFIN

PRODUCT SPECIFICATION:  
BLACK: RW-2060 (EXCEPT SIZE 4/2 AND 6/3)  
ORANGE: 108-32097

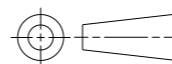
FULLY RECOVERED FABRIC WALL THICKNESS APPROXIMATELY 1.00 (0.039)  
LONGITUDINAL CHANGE ON FULL RECOVERY -10 TO -20%

### STANDARD CUTTING TOLERANCES (mm)

CUT LENGTH	TOLERANCE
UPTO TO 9.90mm	±1.50mm
10mm TO 24.90mm	±1.50mm
25mm TO 54.90mm	±1.50mm
55mm TO 99.90mm	±3.00mm
100mm TO 149.90mm	±4.00mm
150mm TO 499.90mm	±5.00mm
500mm AND GREATER	±25.40mm

THIS DRAWING IS A CONTROLLED DOCUMENT.

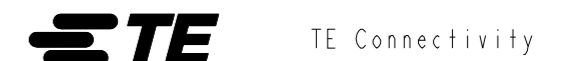
DIMENSIONS:  
mm (Inches)



MATERIAL  
SEE NOTE

TOLERANCES UNLESS OTHERWISE SPECIFIED:  
0 PLC ±0.5  
1 PLC ±0.5  
2 PLC ±0.13  
3 PLC ±0.013  
4 PLC ±0.0001  
ANGLES ±  
FINISH -

DWN	14MAR2023
BASAVARAJA D A	
CHK	14MAR2023
SELVAPANDIAN B	
APVD	14MAR2023
MAYO BAKARE	
PRODUCT SPEC	
SEE NOTE	
APPLICATION SPEC	
114-120001	
WEIGHT	-
CUSTOMER DRAWING	



NAME  
HFT5000  
HEAT-SHRINKABLE FABRIC TUBING

SIZE	CAGE CODE	DRAWING NO	RESTRICTED TO
A3	-	©-HFT5000	-
SCALE	SHEET	OF	REV
NTS	1	1	A