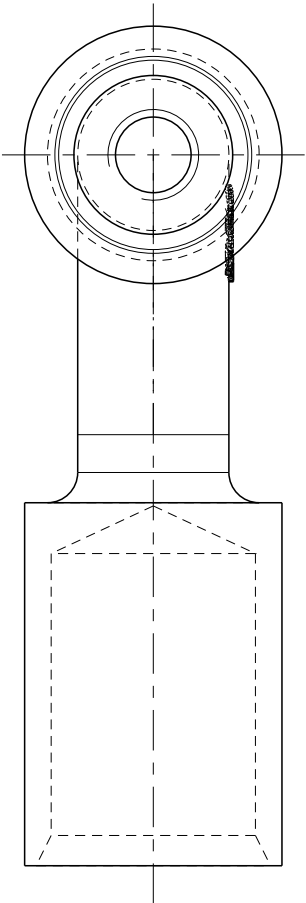
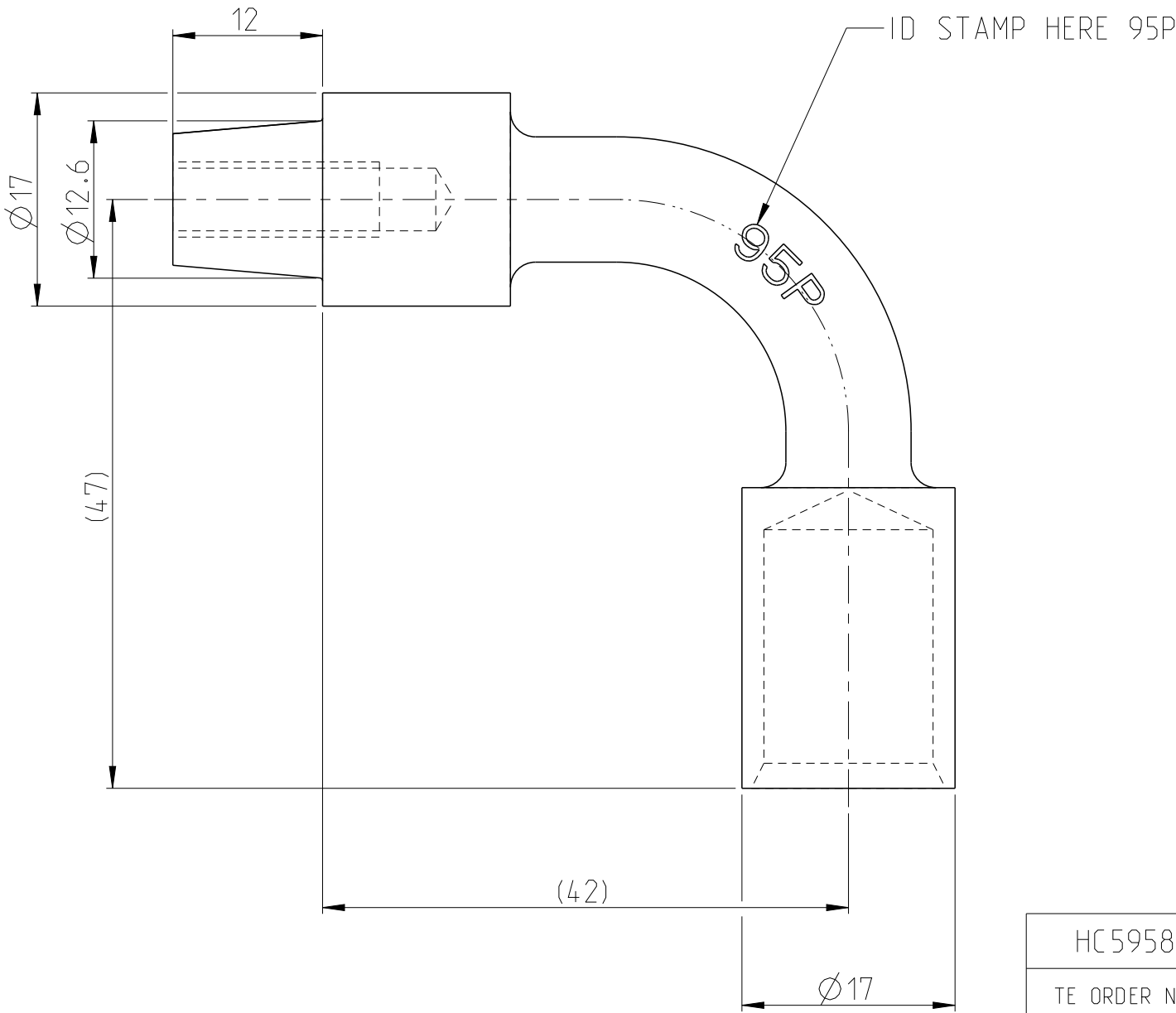
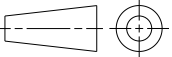


REVISIONS					
P	LTR	DESCRIPTION	DATE	DWN	APVD
	A	INITIAL RELEASE	03JAN2017	VNB	CF
	A1	SEE PCN E-17-010858	26JUL2017	VNB	PV

- NOTES:
- 1 USED WITH BOLT PN HC5981
 - 2 HEXAGONAL CRIMP DIE USED TO SUIT 95mm² WIRE
 - 3 PART TO BE EMBOSSED WITH 95-P
 - 4 REPLACES OLD DEUTSCH DRAWING D303161 (ENVELOPE DRAWING)



HC5958	1	BRASS	-	BATTERY LEAD CONNECTOR 95 SQ mm -VE R/ ANGLE 6mm THREAD			A	1	
TE ORDER NO.	QUANTITIY	MAT.	COLOUR SURFACE	DESCRIPTION				REV.	ITEM
THIS DRAWING IS A CONTROLLED DOCUMENT.			DWN VIJETH BHARADWAJ	<div><div><div></div><div>TE</div></div>TE Connectivity</div>					
			CHK PRAVEENA V						
DIMENSIONS: mm		TOLERANCES UNLESS OTHERWISE SPECIFIED:		NAME BATTERY LEAD CONNECTOR 95 SQ mm +VE R/ ANGLE 6mm THREAD					
		<div><div>0 PLC ±</div><div>1 PLC ±</div><div>2 PLC ±</div><div>3 PLC ±</div><div>4 PLC ±</div><div>ANGLES ±</div></div> <div>±0.3</div> <div>±0.5°</div>							
		MATERIAL BRASS		FINISH TIN PLATED		APVD V V BIDI			
				PRODUCT SPEC 108-94604					
				APPLICATION SPEC -					
				SIZE A3		CAGE CODE		DRAWING NO C=HC5958	RESTRICTED TO -
CUSTOMER DRAWING				WEIGHT 83.9g					
SCALE 5:1						SHEET 1 OF 1		REV A1	