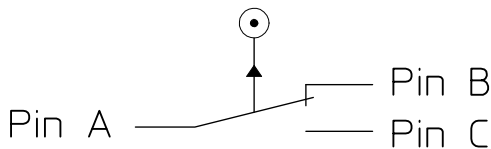
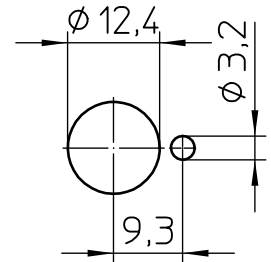


Wiring Diagram



Mounting Dimension



Technical Data Environmentally Characteristics

Housing material	Al-Alloy
Temperature range	-55°C to +85°C
Sealing IEC 60529 (connected)	IP 67 (0,2 bar; 5 min)
Vibration iaw MIL-STD-202; Method 204; Test condition B (10-2000 Hz)	15 g
Shock iaw MIL-STD-202; Method 213; Test condition I (6 ms; sawtooth)	100 g
Insulation resistance iaw MIL-STD-202; Method 302; Test Condition B (500 V; 1 min)	min. 100 MOhm
Dielectric withstanding voltage iaw MIL-STD-202; Method 301	1050 VAC
Actuating force	30 ± 5 N
Torque	max. 10 Nm
Pretravel	1 ± 0,5 mm
Differentialtravel	max. 0,6 mm
Totaltravel	5,5 ± 0,5 mm
Endurance (T) iaw MIL-S-8805; §4.8.26 (28 VDC; 1 A)	100.000 cycles
Switch insert MS 24547-2 iaw MIL-S-8805 to +82°C	Gold (Au)
B10-Value iaw DIN EN ISO 13849; (0,9 x T)	90.000
B10d-Value iaw DIN EN ISO 13849; (2 x B10)	180.000
Weight	0,070 kg

Electrical Characteristics

Voltage	28 VDC
Current	1 A
Electrical rating, resistive load	28 VDC; 1 A
Electrical rating, inductive load	28 VDC; 0,5 A
Electrical rating min., resistive load	15 VDC; 5 mA
Electrical rating min., inductive load	5 VDC; 10 mA

Date	Name	mm	Scale
09.04.2013	Stock	←	1:1
12.02.2018	WalzA	General Tolerances DIN ISO 2768 cL	



Drawing No:

G13-01-1816

NSN: