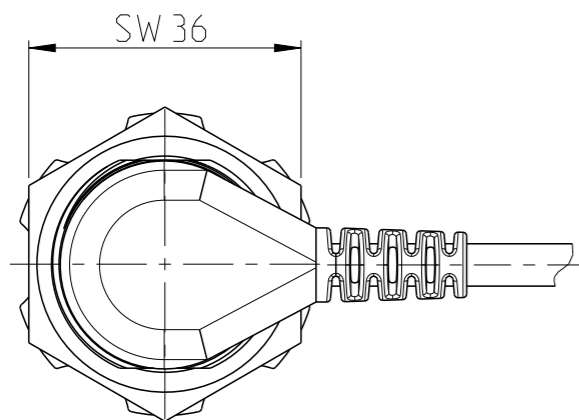
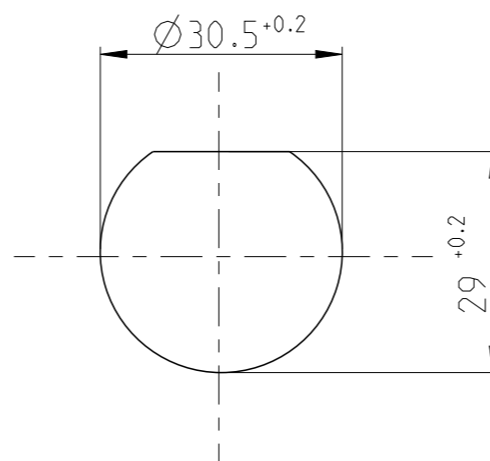


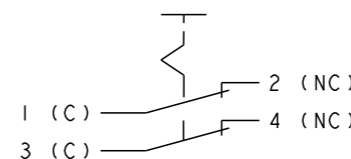
P	LTR	DESCRIPTION	DATE	DWN	APVD
	A	ECN-23-229608	05SEP2023	LG	AW



MONUTING DIMENSIONS
Einbaumaße



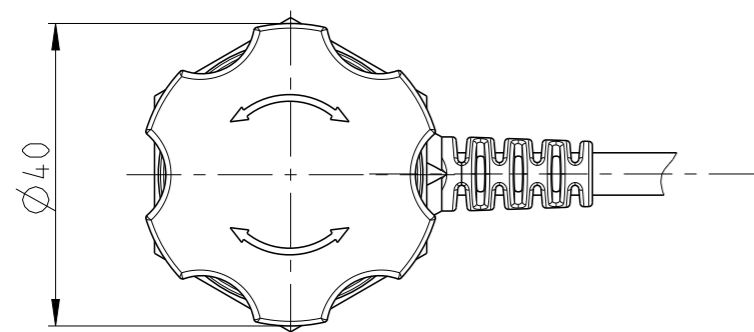
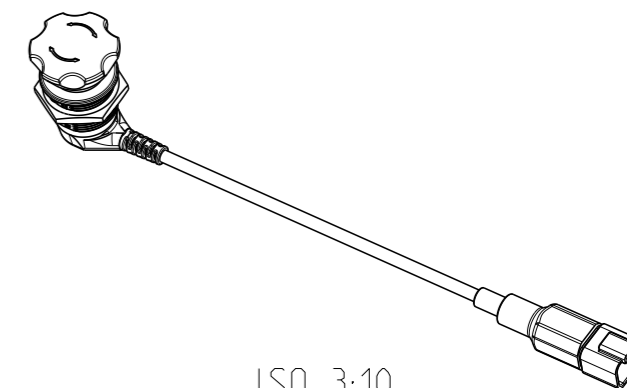
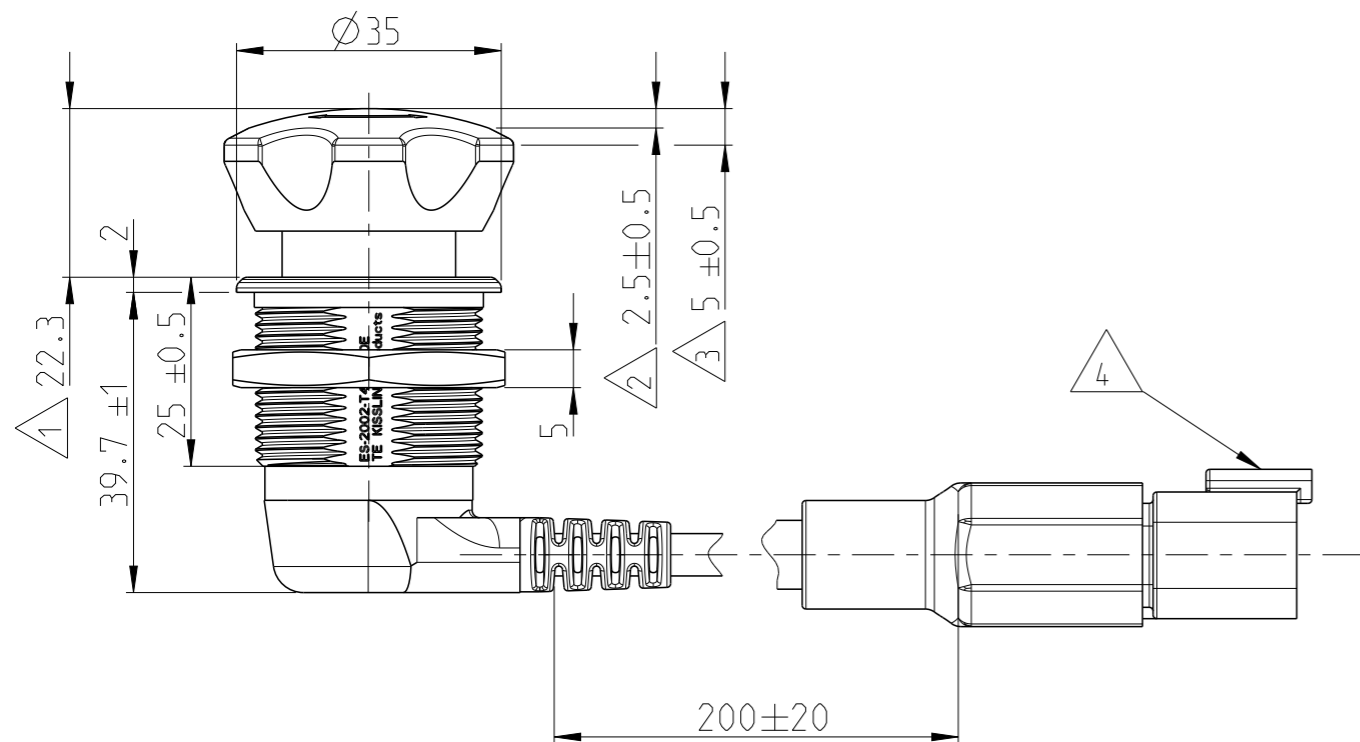
CIRCUIT DIAGRAM
Schaltbild



NOTES

Bemerkungen

- 1 REST POSITION
Ruhstellung
- 2 PRESSURE POINT
Druckpunkt
- 3 LOCKING POSITION
Raststellung
- 4 CONNECTOR DEUTSCH DT04-4P
Steckverbinder Deutsch DT04-4P
- 5 TE-CONNECTIVITY ORDER-NUMBER
TE-Connectivity Bestellnummer



K1164723	A	EMERGENCY SWITCH Not-Halt-Schalter	80	1
TE ORDER-NO.	REV.	DESCRIPTION	WEIGHT [g]	ITEM NO

THIS DRAWING IS A CONTROLLED DOCUMENT.		DWN Pavan R R 28 JUL 2023																
DIMENSIONS: mm		CHK A.O.Walz 28 JUL 2023																
TOLERANCES UNLESS OTHERWISE SPECIFIED: DIN ISO 2867 cL		APVD J.Hoffmann 28 JUL 2023	NAME EMERGENCY SWITCH Not-Halt-Schalter															
<table border="1"> <tr><td>0 PLC</td><td>±</td></tr> <tr><td>1 PLC</td><td>±</td></tr> <tr><td>2 PLC</td><td>±</td></tr> <tr><td>3 PLC</td><td>±</td></tr> <tr><td>4 PLC</td><td>±</td></tr> <tr><td>ANGLES</td><td>±</td></tr> <tr><td>FINISH</td><td>±</td></tr> </table>		0 PLC	±	1 PLC	±	2 PLC	±	3 PLC	±	4 PLC	±	ANGLES	±	FINISH	±	PRODUCT SPEC	RESTRICTED TO	
0 PLC	±																	
1 PLC	±																	
2 PLC	±																	
3 PLC	±																	
4 PLC	±																	
ANGLES	±																	
FINISH	±																	
MATERIAL		APPLICATION SPEC	SIZE A3	CAGE CODE 00779														
		WEIGHT	DRAWING NO ES-2002-T412-020E															
		CUSTOMER DRAWING	SCALE 1:1	SHEET 1 OF 2														
			REV A															

P	LTR	DESCRIPTION	DATE	DWN	APVD

Technische Daten

Aufbau
Werkstoff, Gehäuse.....PA GF RAL 1003, UL 94 V0
Werkstoff, Druckknopf.....PA GK RAL 3000; UL 94 HB
Schutzart Innenraum.....IP67 nach IEC 60529
.....IP6K9K nach IEC 60529
Stecker (im montierten Zustand).....IP67 nach IEC 60529
Schockfestigkeitnach ISO 16750-3; 50g/ 6ms halbsinus
Vibrationfestigkeit.....nach ISO 16750-3; Test VII
Klimafestigkeit.....nach IEC 60068-2-38
chem. Beständigkeit.....nach ISO 16750-5; Code Z
Umgebungstemperatur.....-40°C bis +85°C
Anzugsdrehmoment M30x1,5 max.....6 Nm

Mechanische Daten

Verrastung (Rückstellung durch drehen).....nach EN 60947-5-5
Zwangsöffnung (NC).....nach EN 60947-5-1
Betätigungskraft.....20-50 N
Drehmoment Knopf max3 Nm
Stromführende Teile.....Cu-Legierung
Kontaktwerkstoff.....Ag-Legierung
Mech. Lebensdauer.....40,000 Schaltspiele

Elektrische Daten

Betriebsspannung.....9VDC bis 32VDC
Nennspannung.....12VDC / 24VDC
Spannungsfestigkeit.....1050 VAC für 1 min
Kontaktwiderstand.....max. 50 mOhm
Isolationswiderstand.....> 100 MOhm bei 500 VDC
Dauerstrom.....10mA bis 8A
Schaltstrom max.....10,1 A
Schaltvermögen min.....12 VDC, 10mA
Elektr. Lebensdauer
bei 8 A / 28 VDC ohmsche Last.....10 000 Schaltspiele
bei 5 A / 28 VDC ohmsche Last.....40 000 Schaltspiele
bei 2 A / 28 VDC ohmsche Last.....40 000 Schaltspiele
Kurzschlußschutz gemäß EN 60947-5-1.....KFZ-Sicherung 10A

TECHNICAL SPECIFICATIONS


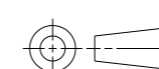
CONSTRUCTION
MATERIAL, SOCKET.....PA GF RAL 1003, UL 94 V0
MATERIAL, PUSH BUTTON.....PA GK RAL 3000; UL 94 HB
PROTECTION INTERIOR.....IP67 ACCORDING TO IEC 60529
.....IP6K9K ACCORDING TO IEC 60529
CONNECTOR IN MOUNTED CONDITION).....IP67 ACCORDING TO IEC 60529
SHOCK RESISTANCEACCORDING TO ISO 16750-3, 50G/ 6MS HALF SINE
VIBRATION RESISTANCE.....ACCORDING TO ISO 16750-3, TEST VII
CLIMATIC RESISTANCE.....ACCORDING TO IEC 60068-2-38
CHEMICAL RESISTANCE.....ACCORDING TO ISO 16750-5; CODE Z
TEMPERATURE RANGE.....-40°C TO +85°C
MAX. TORQUE M30X1.56 Nm

MECHANICAL DATA

LOCKING (TURN TO RESET).....ACCORDING TO EN 607-5-5
POSITIVE OPERATION (NC).....ACCORDING TO EN 607-5-1
OPERATING FORCE.....20-50 N
TORQUE KNOB MAX3 Nm
CURRENT CARRYING PARTS.....Cu ALLOY
CONTACT MATERIAL.....Ag ALLOY
MECHANICAL LIFE.....40,000 SWITCHING CYCLES

ELECTRICAL DATA

VOLTAGE RANGE.....9VDC TO 32VDC
NOMINAL VOLTAGE.....12VDC / 24VDC
DIELECTRIC WITHSTANDING VOLTAGE.....1050 VAC FOR 1 MIN
CONTACT RESISTANCE.....MAX. 50mOhm
INSULATION RESISTANCE.....> 100 MOhm AT 500 VDC
CONTINUOUS CURRENT.....10mA TO 8A
CURRENT MAX.....10.1A
SWITCHING CAPACITY MIN.....12 VDC, 10mA
ELECTRICAL LIFE
AT 8 A / 28 VDC RESISTIVE LOAD.....10 000 CYCLES
AT 5 A / 28 VDC RESISTIVE LOAD.....40 000 CYCLES
AT 2 A / 28 VDC RESISTIVE LOAD.....40 000 CYCLES
SHORT-CIRCUIT PROTECTION AUTOMOTIVE FAST-ACTING FUSE 10A

THIS DRAWING IS A CONTROLLED DOCUMENT.		DWN Pavan R R	28JUL2023	 TE Connectivity	
DIMENSIONS: mm		CHK A.O.Walz	28JUL2023		
TOLERANCES UNLESS OTHERWISE SPECIFIED: DIN ISO 2867 cL		APVD J.Hoffmann	28JUL2023		
		PRODUCT SPEC		NAME EMERGENCY SWITCH Not-Halt-Schalter	
MATERIAL		FINISH		APPLICATION SPEC	RESTRICTED TO
WEIGHT		SIZE A3	CAGE CODE 00779	DRAWING NO ES-2002-T412-020E	RESTRICTED TO -
CUSTOMER DRAWING				SCALE 1:1	SHEET 2 OF 2
				REV A	