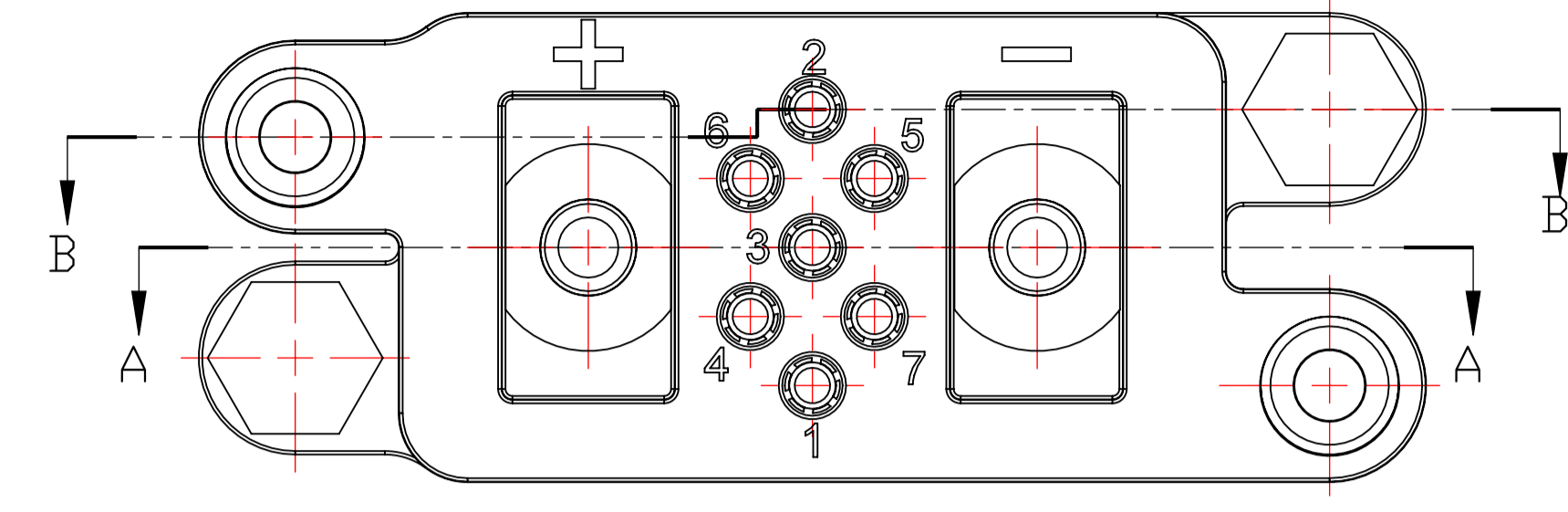
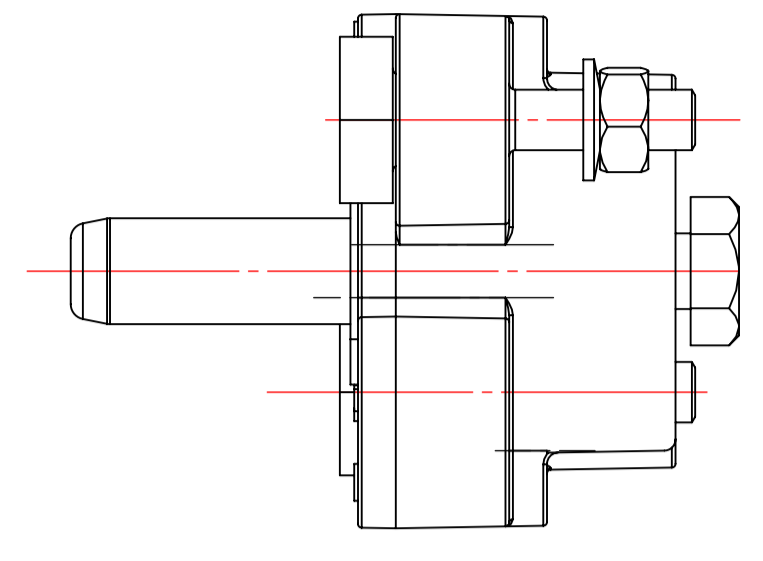
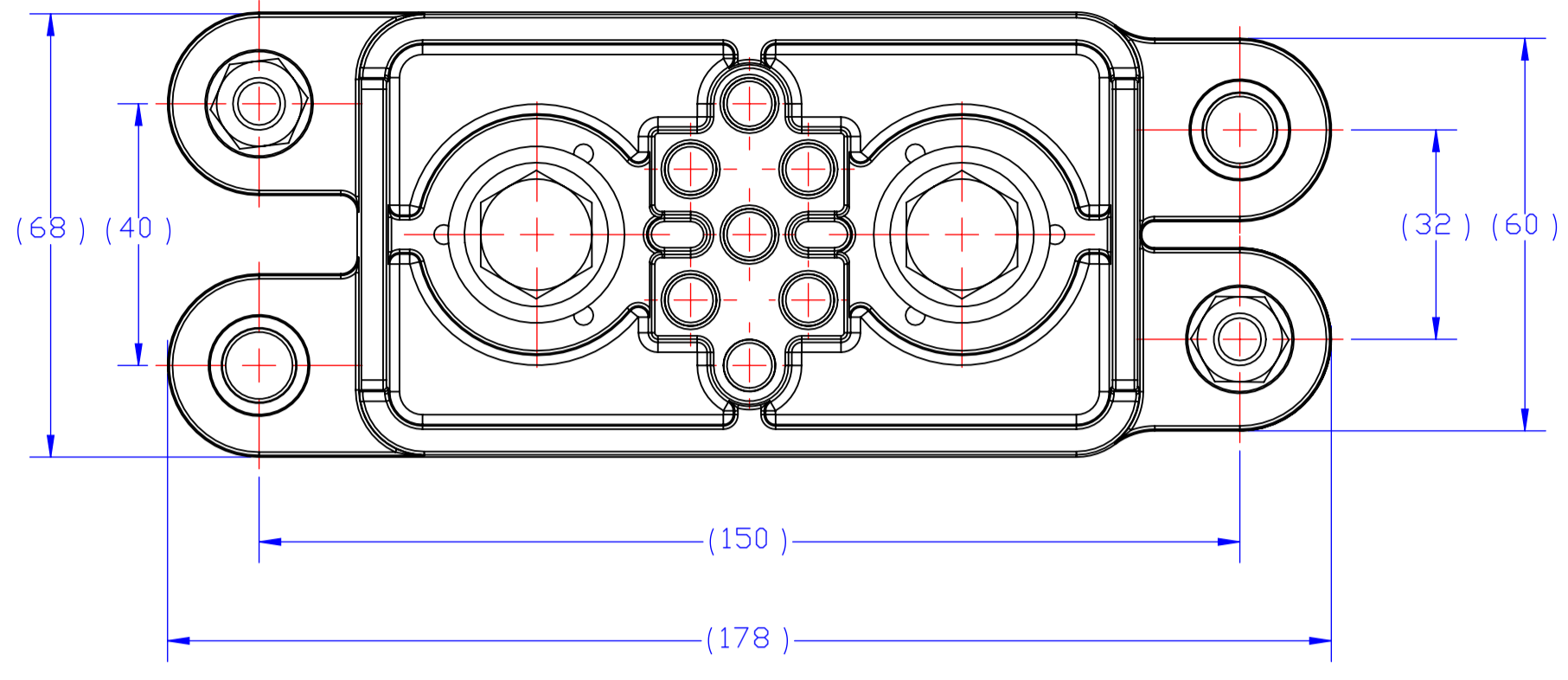
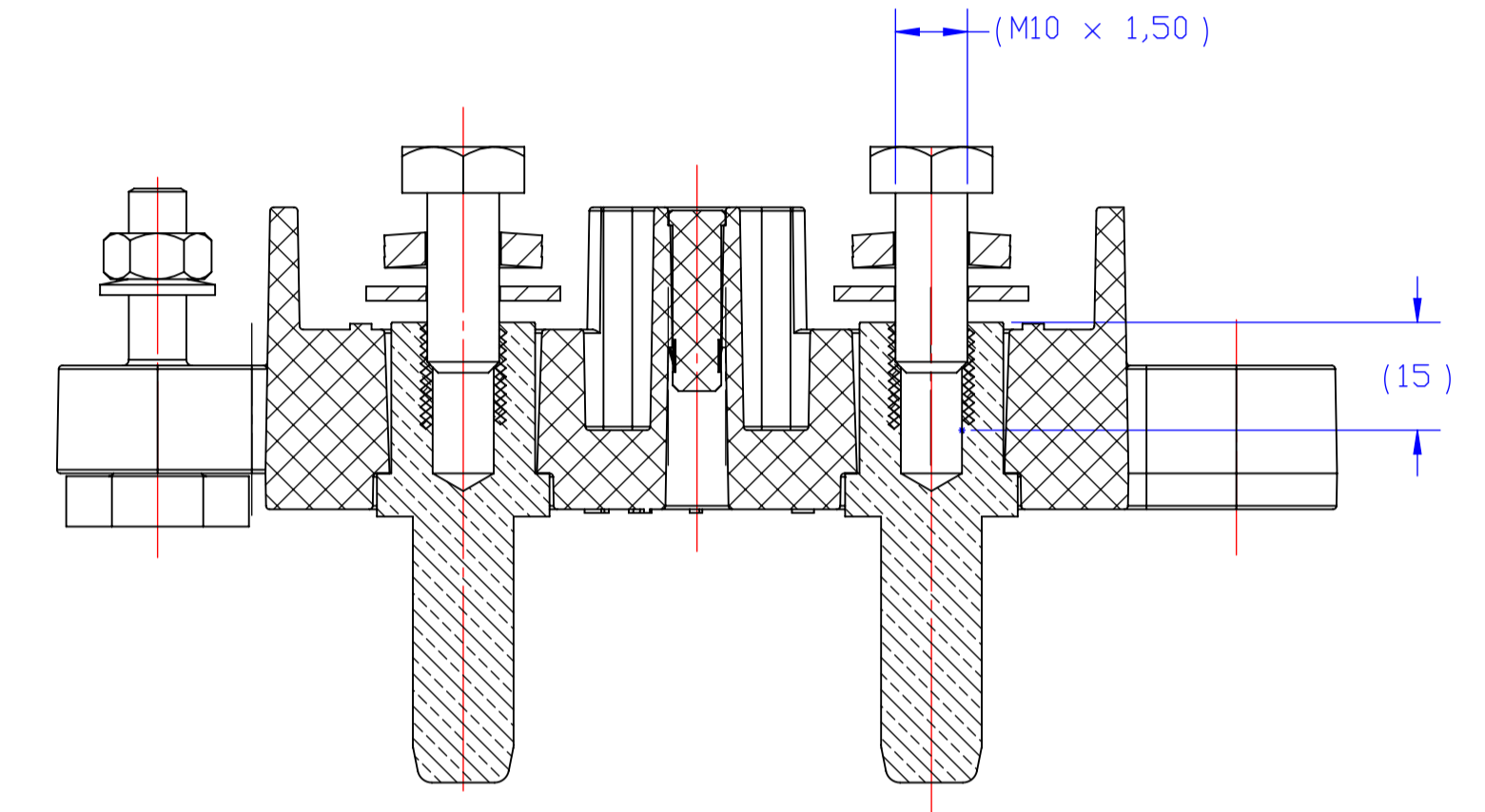
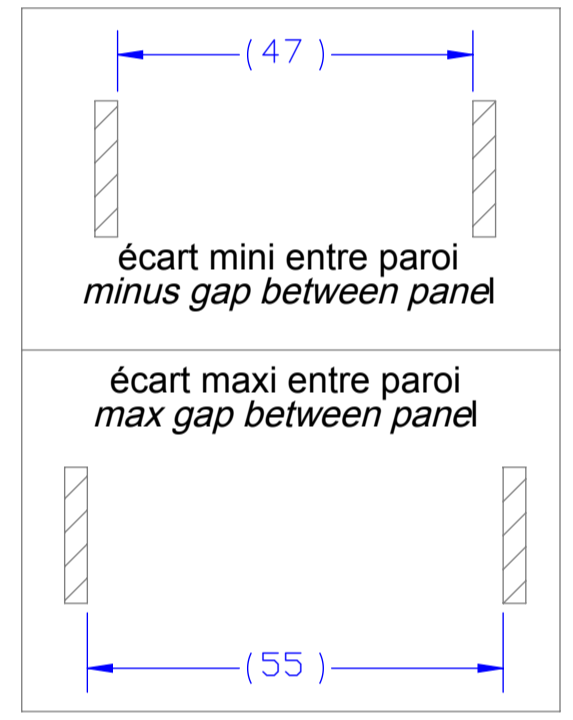
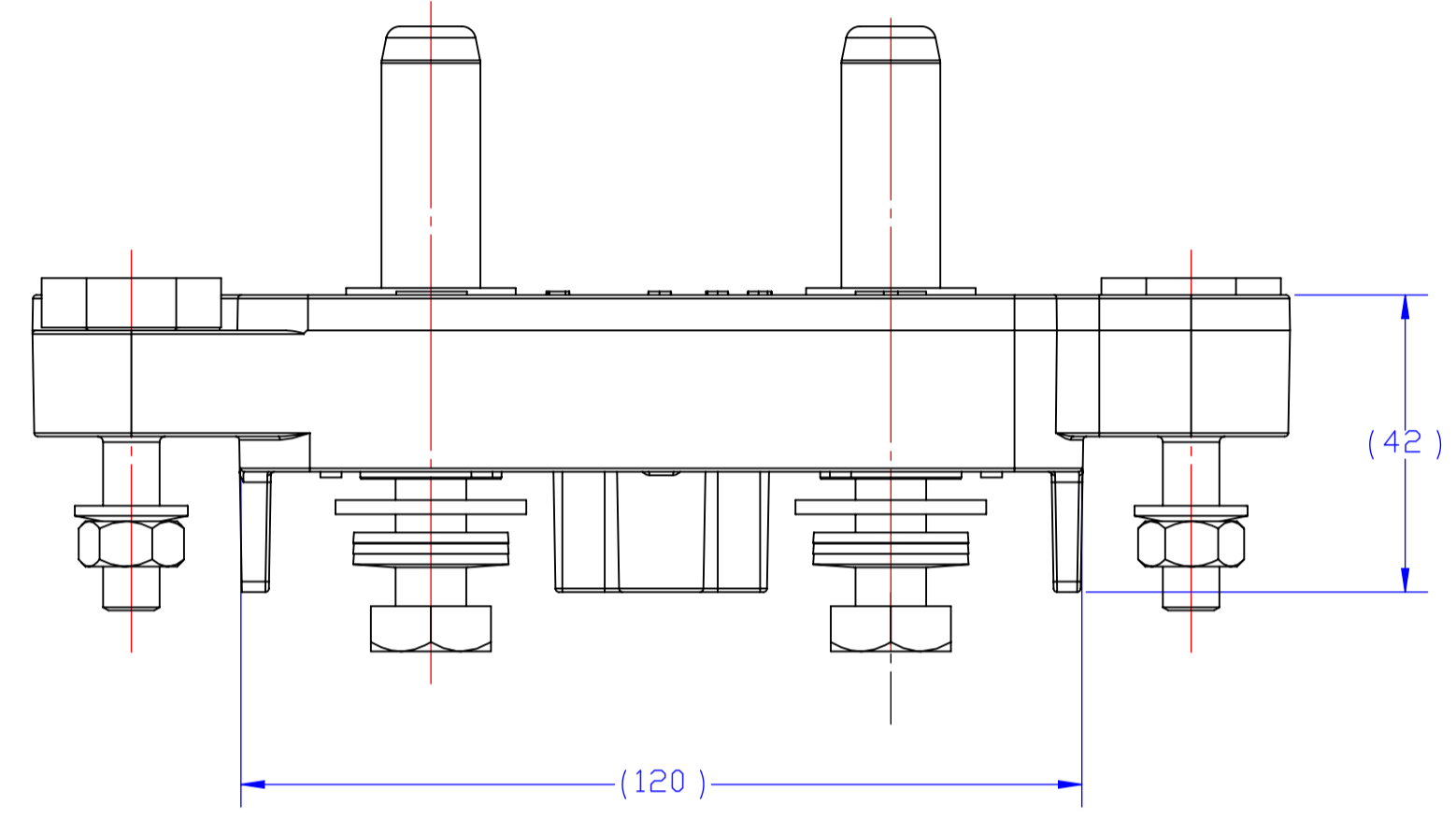


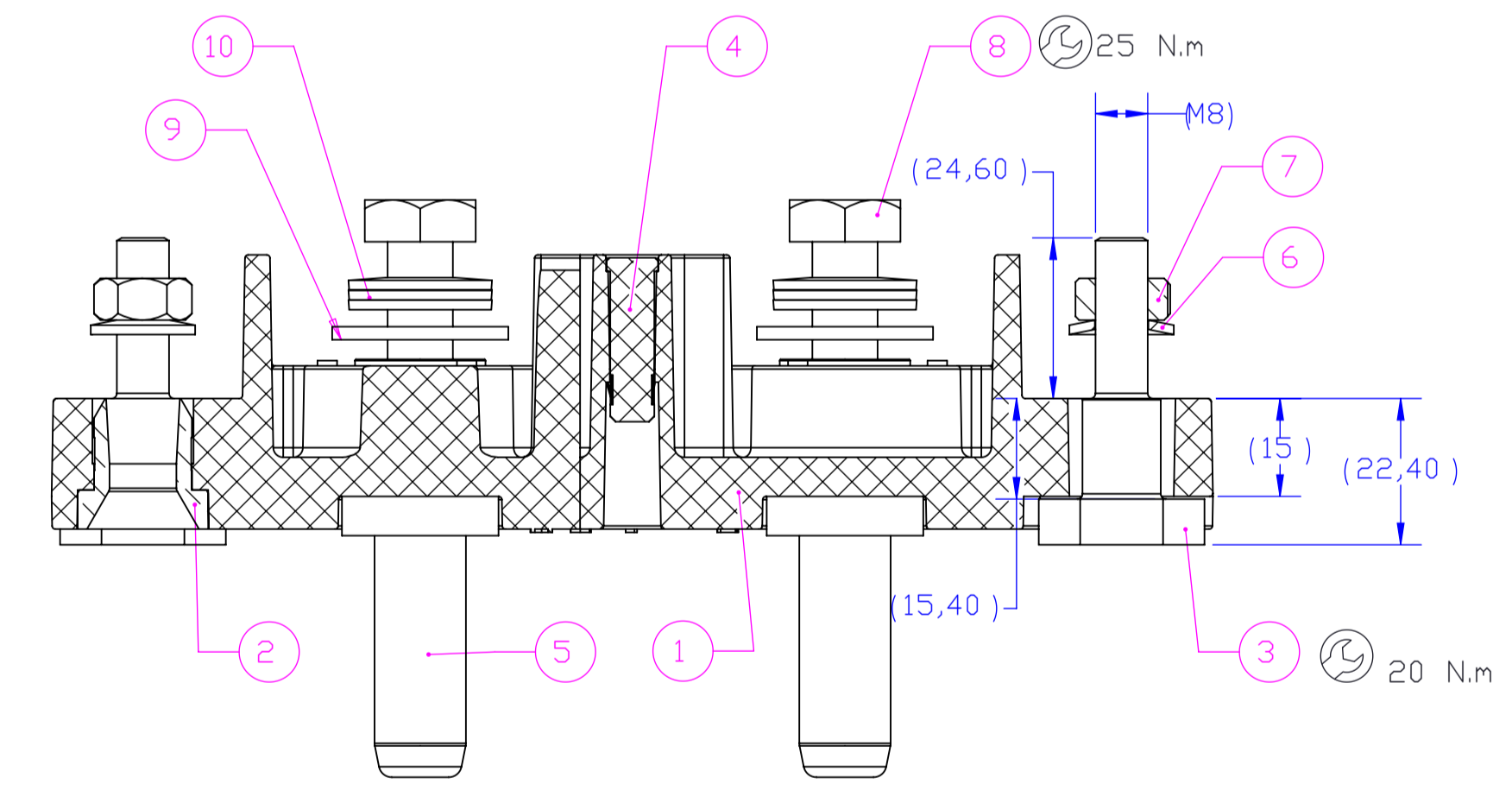
Project NR		REVISIONS			
P	LTR	DESCRIPTION	DATE	BY	APPR
B		Modification rondelle 3L-10-I acier devient inox - Diffusion 285324	01SEP2008	SCT	
C		Remplacer rondelle 0436-0008-E-Z par 0436-0008-E-I - Dif 295176	03MAR2009	RD	
D		S15752-0004 devient Y00000-S15752-0004 DM350039 - Diffusion 331453	03DEC2015	EL	MV



- () : cotes pour information / dimensions for information
 () : cotes de controle / inspection dimensions
- Instructions de mise en oeuvre à appliquer par le client
 Customer instructions to be applied by the customer
- Outil d'extraction des bouchons
 Extraction tool for the caps : OUTCCIEXT-0D100

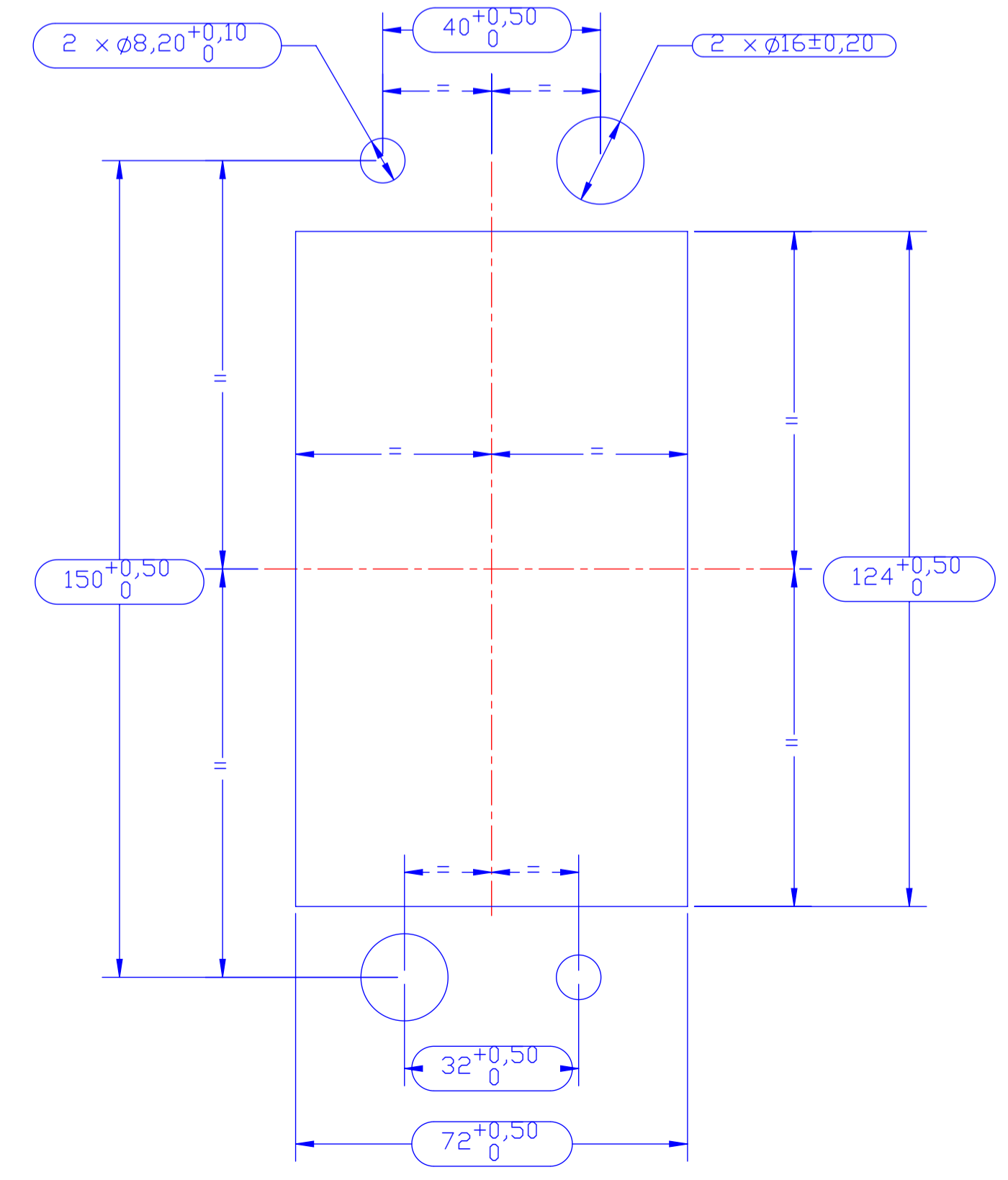


COUPE A-A



COUPE B-B

DECOUPE PAROI POUR PARTIE FLOTTANTE
 PANEL CUTTING FOR FLOATING PART



-	-	Inox	Stainless steel	1.31	2	3L-10-I	Rondelle Trep	Trep washer	10
-	-	Inox	Stainless steel	7.74	2	LU-10-I	Rondelle plate	Plain washer	9
-	-	Inox	Stainless steel	27.84	2	HM10x25-I	Vis H	Screw H	8
-	-	Inox	Stainless steel	5.53	2	HM08-I	Ecrou HM8	Nut H	7
-	-	Inox	Stainless steel	1.80	2	0436-0008-E-I	Rondelle contact	Washer	6
-	Argenture	Cuivre	Copper	134.20	2	Y00000-S15752-0004	S/E Broche cal. 14	S/A pin caliber 14	5
-	-	-	-	3.01	7	s23611-0003	Bouchon	Cap	4
-	-	Inox	stainless steel	46.74	2	23610-000A3	Vis de fixation flottante	Screw	3
-	-	Bronze	bronze	15.53	2	23609-000A3	Douille de guidage	Centering bushing	2
-	-	Polyamide	Polyamide	304.21	1	31344-000A1	Bloc isolant	insulating block	1
Observations	Protection	Matière	Material	Masse (g)	Nbr	Codification	Désignation	Designation	REP
Remarks	Plating			Weight (g)	Qty	Part number			Item

Référence commerciale / Commercial reference : CSR31343-0001-A0001

YE31343-0001-A0001
 PART NO

THIS DRAWING IS A CONTROLLED DOCUMENT.

DATE: 03DEC2015
 CHK: GLEMOINE
 APPR: M.VIMARD

TE Connectivity

NAME: S/E connecteur rackable mâle partie flottante cal14
 S/A male rack connector floating part cal14

PRODUCT SPEC: -
 APPLICATION SPEC: -
 FINISH: -

WEIGHT: 779.74 g

SCALE: 1:1
 SHEET: 1 OF 1
 REV: D