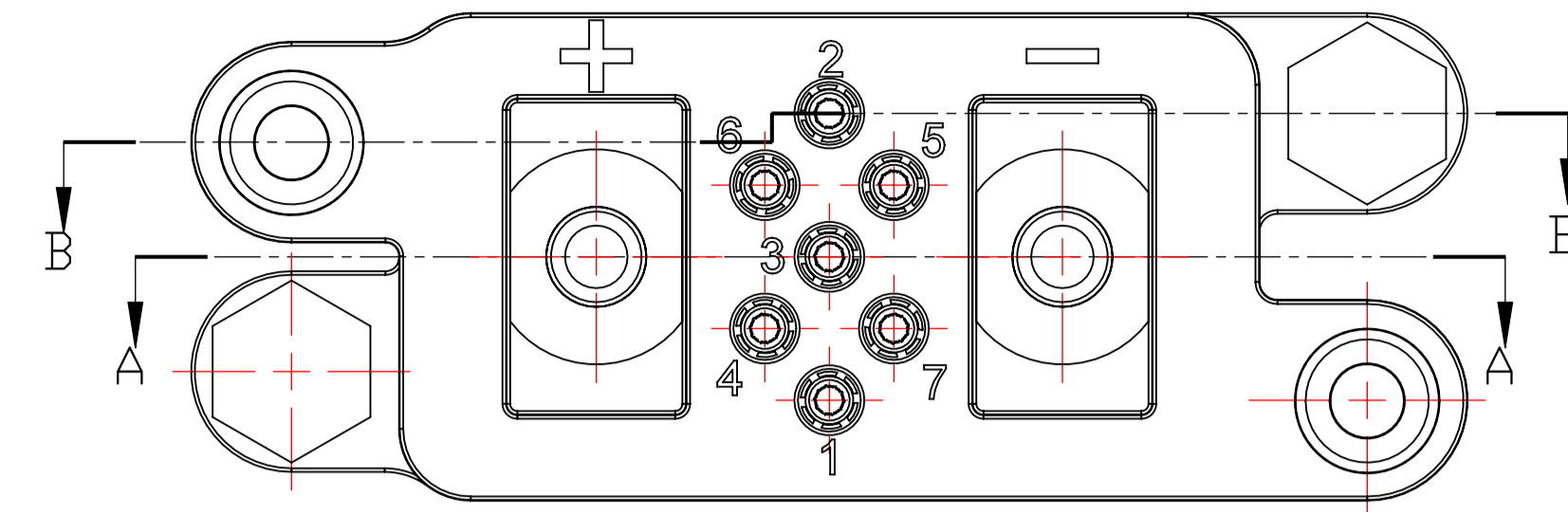
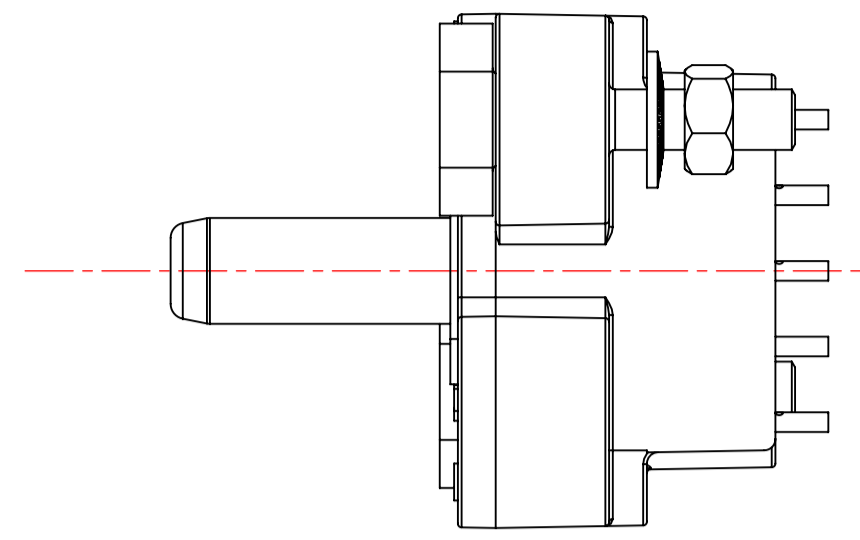
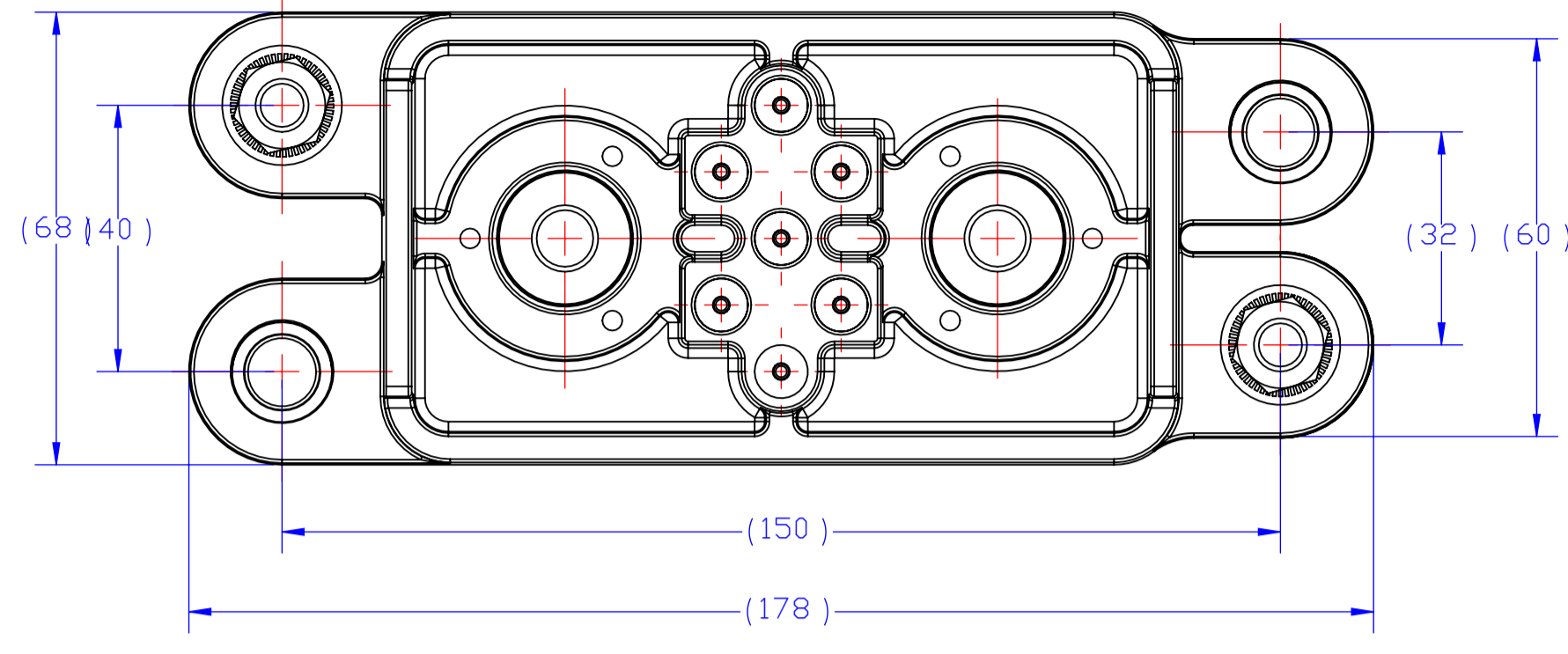
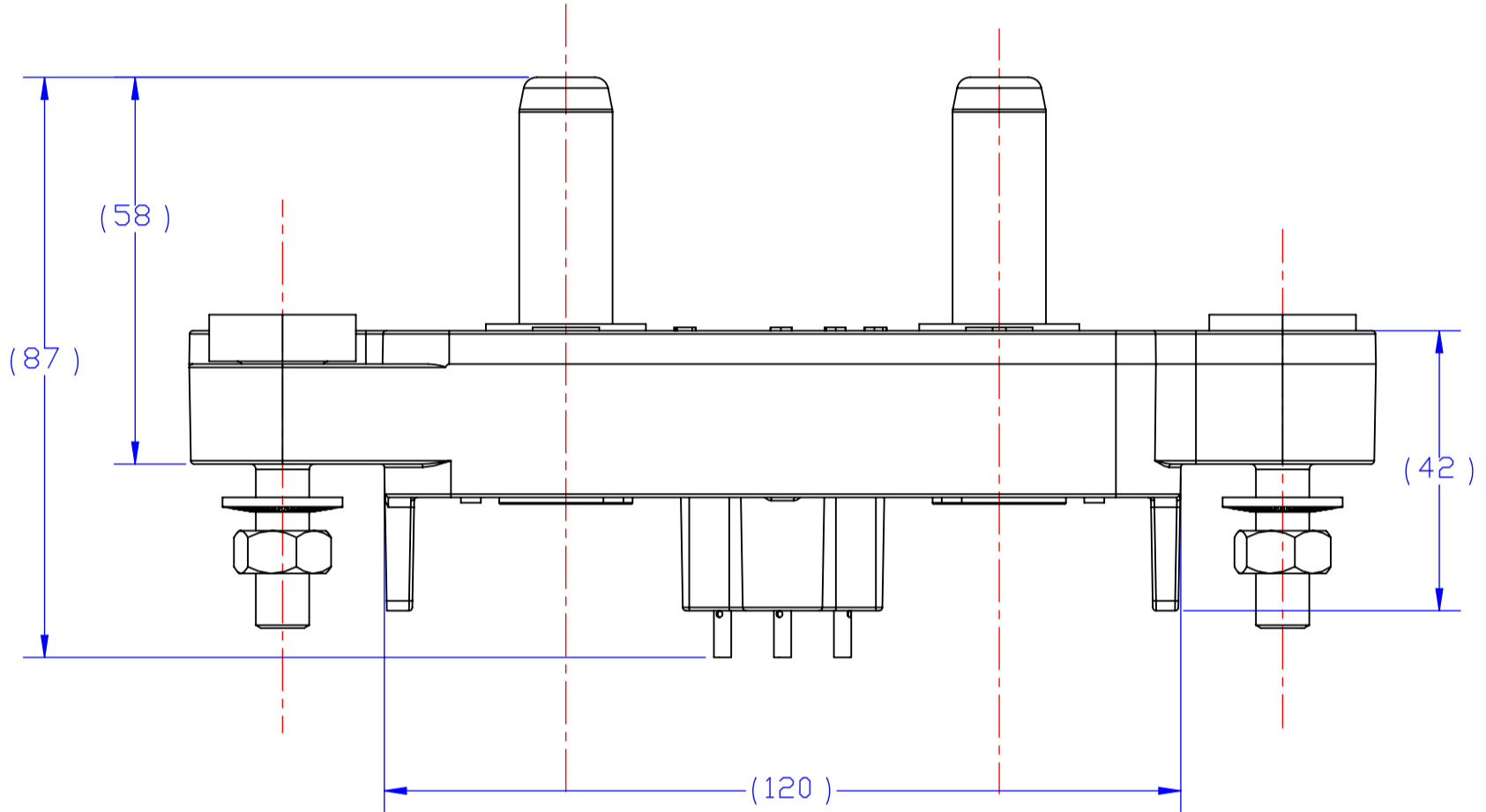


Project NR		REVISIONS			
P	LTR	DESCRIPTION	DATE	ENV	APPROV
B		Modification désignation et ajout découpe paroi - Diffusion 27267	19JUN2007	PDE	
C		Ajout pos et profondeur taraudage + couples serrage et tableau outillage sertissage - Dif 285205	21FEB2008	SCT	
D		S15752-0004 devient Y00000-S15752-0004 DM350039 - Diffusion 331453	02DEC2015	EL	MV

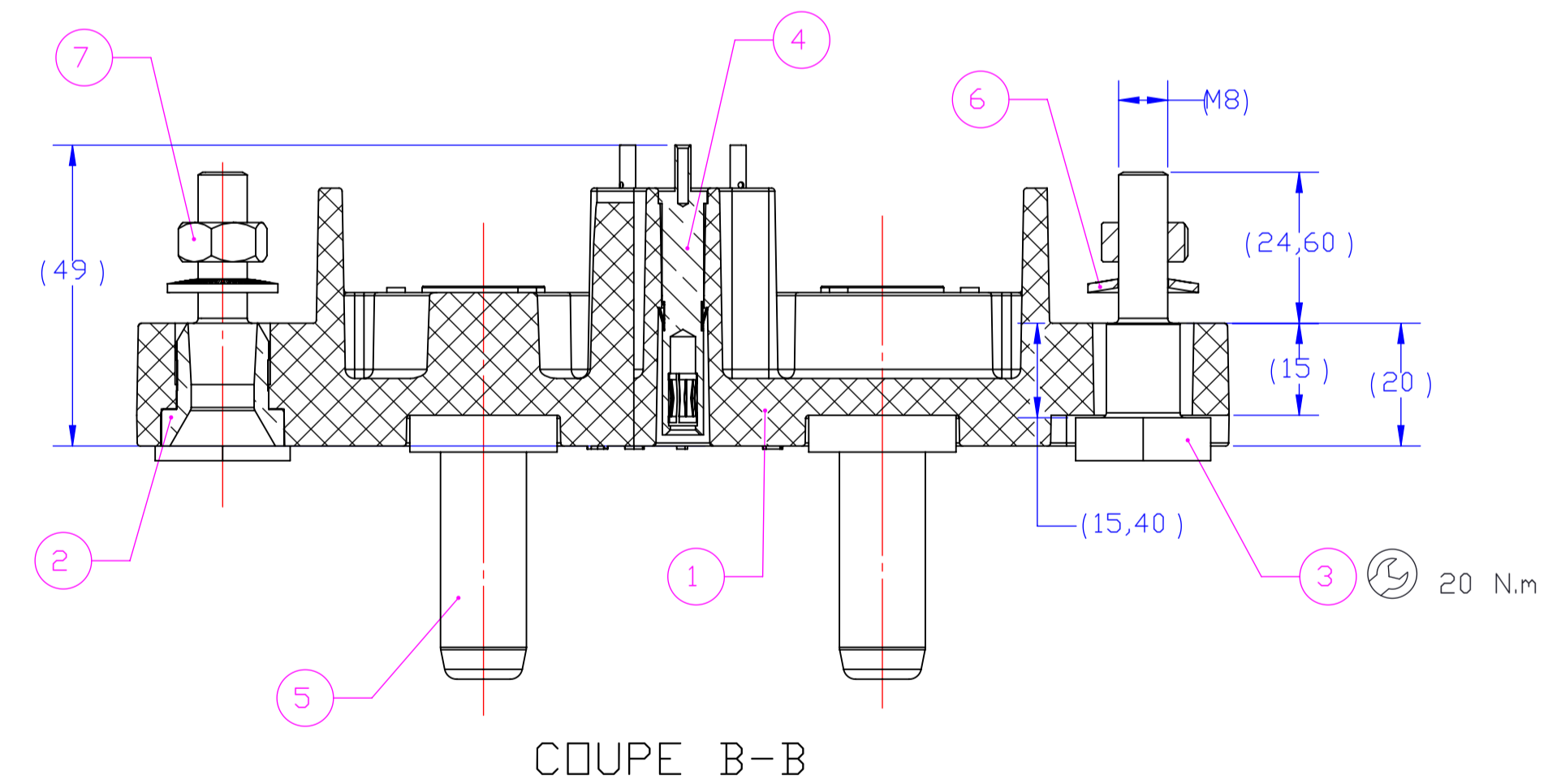
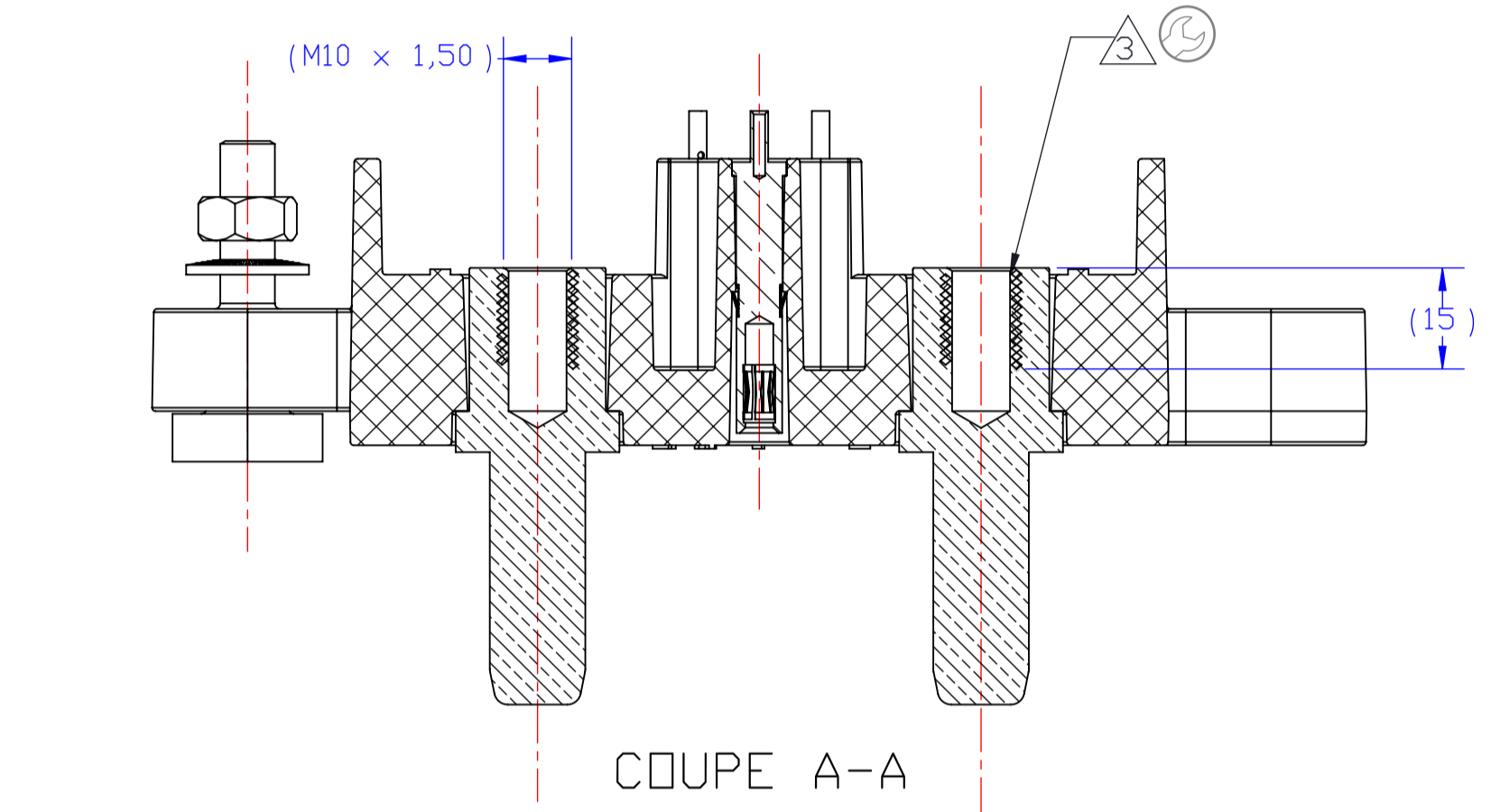
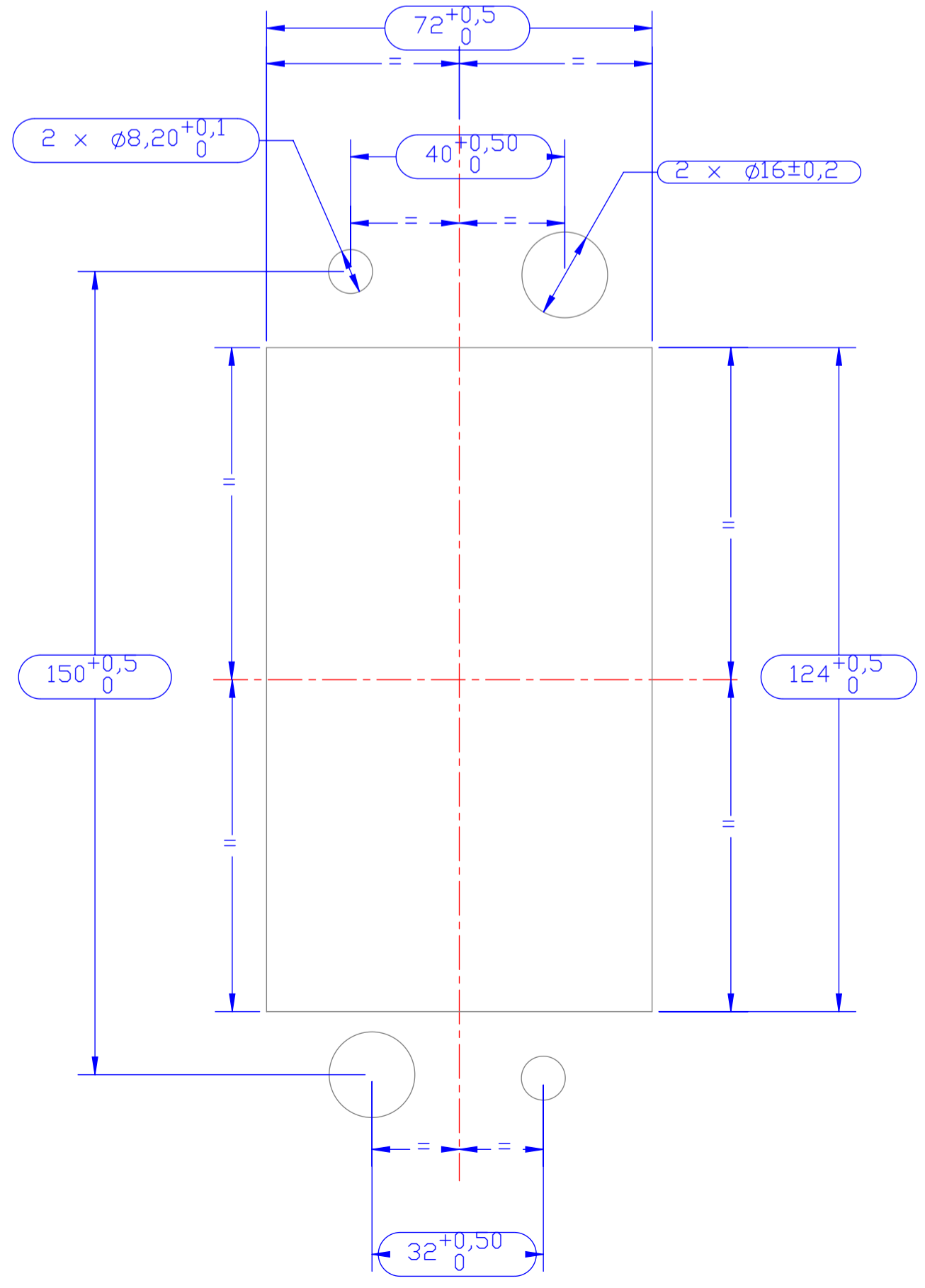
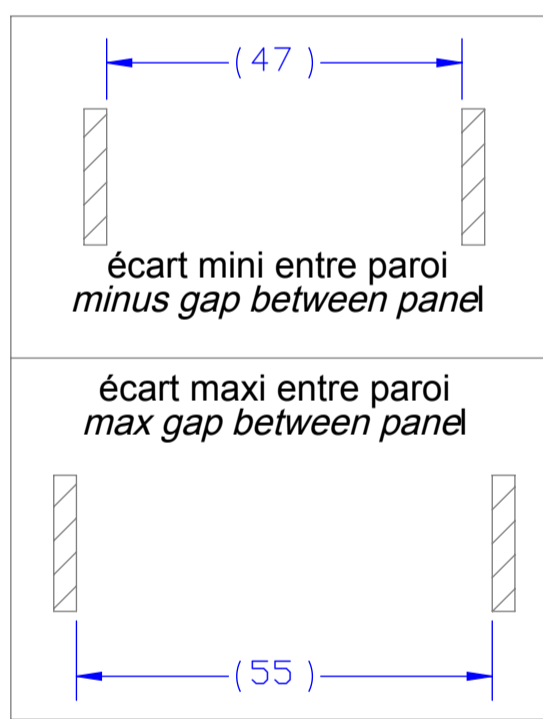


- () : cotes pour information / dimensions for information
 () : cotes de contrôle / inspection dimensions
- Instructions de mise en oeuvre à appliquer par le client
 Customer instructions to be applied by the customer
- Couple de serrage vis / contact de puissance = 25N.m
 (Tightening torque of screw / power contact)

4 Outillage sertissage et extraction Crimping and extraction tool				
Numéro / Numbre	Calibre / Caliber	Réf commerciale / Commercial ref	Section admissible / Acceptable	outillage sertissage / Crimping tool
4	4	DAM S18267-0004	0,5 to 1,5mm ²	Pince / Plier : OCETA M317 Tourelle / locator : sans / without Sélecteur / Selector : 1 / 2



DECOUPE PAROI POUR PARTIE FLOTTANTE
 PANEL CUTTING FOR FLOATING PART



-	-	Inox Stainless steel	5.53	2	HM08-I	Ecrou HM8 Nut H	7
-	-	Inox Stainless steel	2.24	2	0436-0008-M-I	Rondelle contact Spring washer	6
-	Argenture Silver plating	Cuivre Copper	134.20	2	Y00000-S15752-0004	S/E Broche cal. 14 S/A pin caliber 14	5
-	-	-	11.60	7	s18267-0004	S/E douille pilote Contact socket pilot	4
-	-	Inox stainless steel	46.74	2	23610-000A3	Vis de fixation flottante Screw	3
-	-	Bronze bronze	15.53	2	23609-000A3	Douille de guidage Centering bushing	2
-	-	Polyamide Polyamide	304.21	1	31344-000A1	Bloc isolant insulating block	1
Observations Remarks	Protection Plating	Matière Material	Masse (g) Weight (g)	Nbr Qty	Codification Part number	Désignation Designation	REP Item

Référence commerciale / Commercial reference : CSR31343-0001-00000

YE31343-0001-00000
 PART NO

THIS DRAWING IS A CONTROLLED DOCUMENT.		DATE	NAME
DR	LAURY	02DEC2015	
CHK	GLEMOINE	02DEC2015	
APPV	MVIMARD	02DEC2015	
PRODUCT SPEC	S/E Connecteur rackable male partie flottante cal. 14		
APPLICATION SPEC	S/A Male rack connector floating part cal. 14		
SIZE	CAGE CODE	DRAWING NO	RESTRICTED TO
A1	-	C=31343-0001-00000	-
WEIGHT	766.99 g		
CUSTOMER DRAWING	SCALE	SHEET	REV
	1:1	1 OF 1	D